



GOVERNMENT OF TUVALU

Biannual Statistical Report

June 2008

Central Statistics Division
Ministry of Finance & Economic Planning
Vaiaku, Funafuti, TUVALU

Phone: 688 20107, Fax: 688 20210, e-mail: statistics@tuvalu.tv

PREFACE

The contents of this report highlight the latest statistics about Tuvalu. The report contains the Consumer Price Index (CPI), Trade, Electricity, Population, Migration, Education, Civil Service and Seamen statistics. The report will be updated on a biannual basis as new data become available.

Data for earlier years of some of the series not included in this report can be obtained from our office upon request. We appreciate your cooperation in providing our office with any statistical information that can also be included in future editions of this report. In addition, any feedbacks, comments or suggestions in improving the contents of this report are most welcome.

A lot of thanks to the office staff who were involved in compiling this report and so as to our data providers for their contribution and support in providing the relevant raw data and statistics.



Semu Malona
Government Statistician
31 July 2008

CONTENTS

Page

1. CONSUMER PRICE INDEX	1
2. TRADE	2-3
3. ELECTRICITY	4
4. POPULATION	5
5. MIGRATION	6-8
6. EDUCATION	9
7. CIVIL SERVICE	10
8. SEAMEN	11
9. APPENDIX	12-27

I. CONSUMER PRICE INDEX

Figure 1.1 shows Tuvalu CPI experiences a quarterly increase of 7.2 % for the second quarter of 2008. The increase in the indices from 1074.63 to 1152.0 of the first quarter and second quarter respectively resulted in the annual inflation rate of 11.4% and the average inflation rate of 4.6%. (Refer to Appendix: Table A1)

Figure 1.1: Percentage change of the Tuvalu CPI by quarters

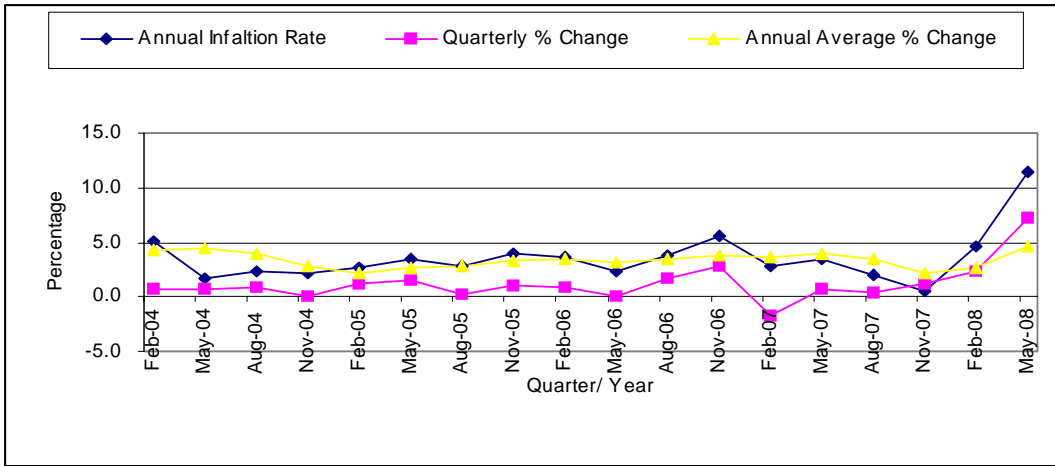
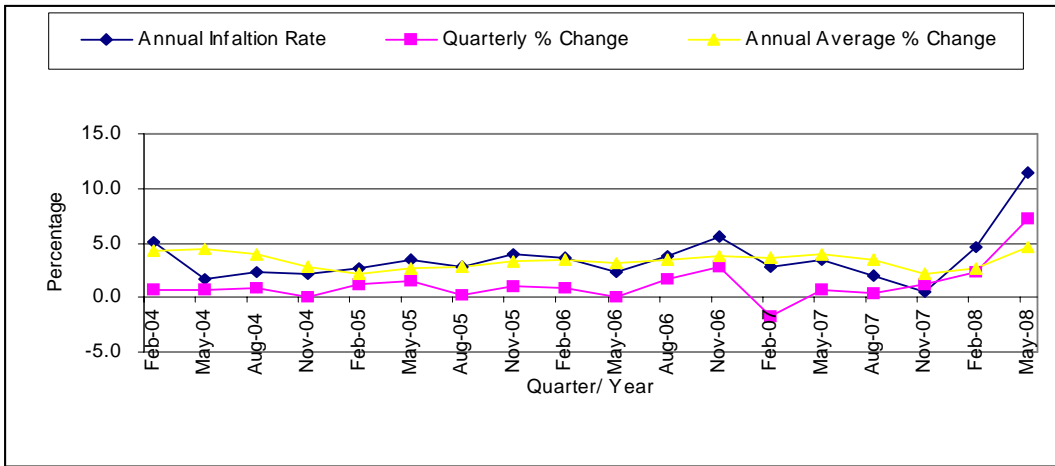


Figure 1.2 shows the movement in the CPI since 2004. All groups express a steady increase indicating the increase in the prices of items in the basket of goods over the last five years. All the major groups except for the *miscellaneous group* experienced a quarterly increase in their priced item. (Refer to Table A2)

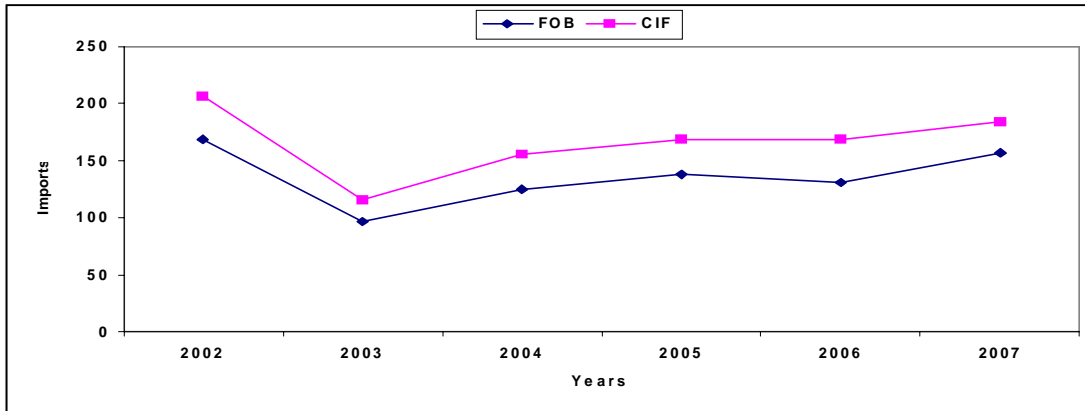
Figure 1.1: Percentage change of the Tuvalu CPI by quarters



2. TRADE

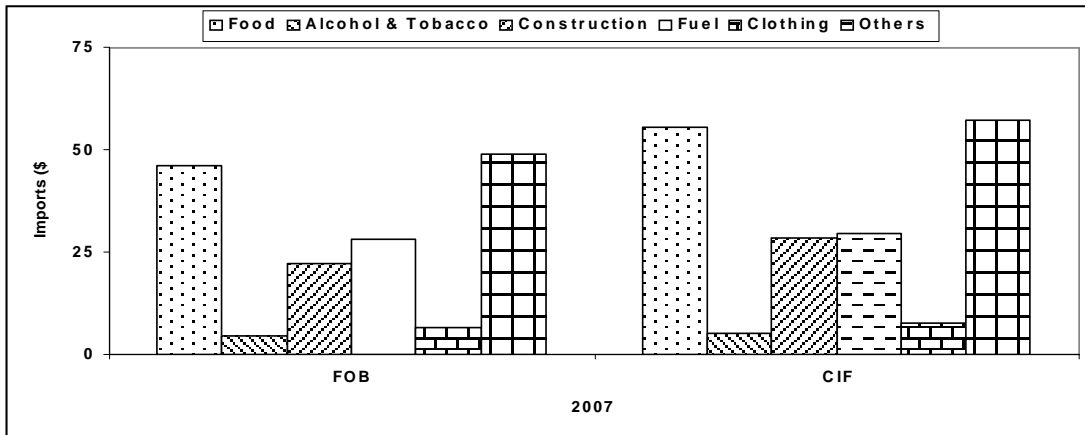
Imports went down in 2003 but then increased in the later years. Imports for 2007 was \$18.4 million (CIF), an increase of 9.2% from 2006. The highest value of \$20.6 million (CIF) in 2002 was the time when the new government building was constructed. (Refer Appendix: Table A3).

Figure 2.1: Total imports (in \$100,000s) by years



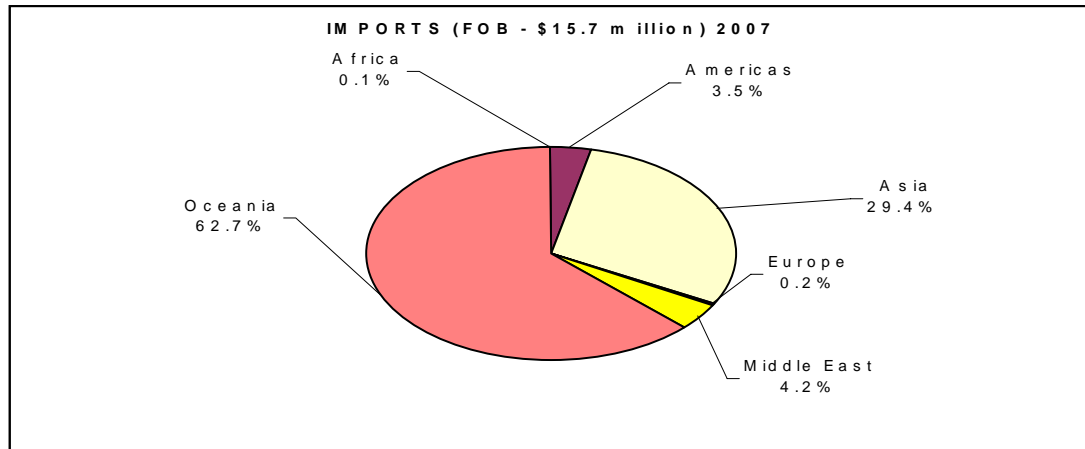
In 2007 the group Others records the highest with \$5.7 million followed by the group Food with \$4.6 million. (Refer to Appendix: Table A3).

Figure 2.2: Total imports (in \$100,000s) by groups in 2007



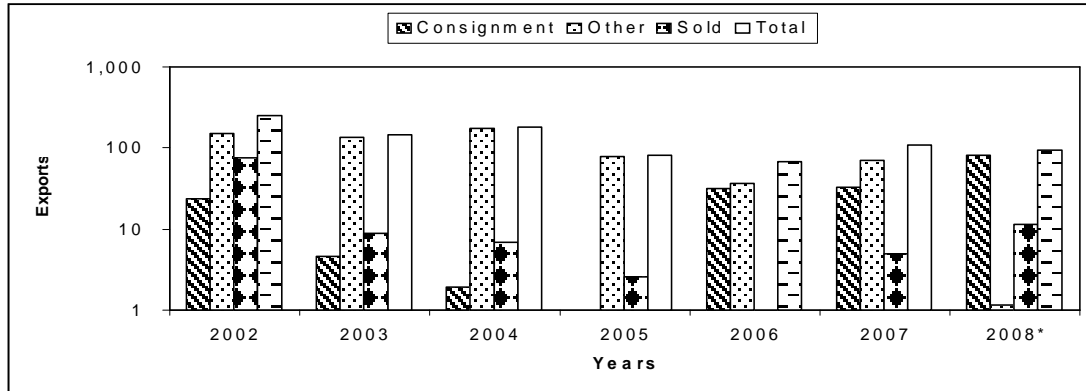
Most imports in 2007 were from the region Oceania (62.7%) followed by Asia (29.4%). (Refer to Appendix: Table A5).

Figure 2.3: Imports (FOB) from regions of origin - 2007



Exports in 2007 (\$109,413) increased by 61% as compared to 2006 (\$67,952). (Refer to Appendix: Table A11).

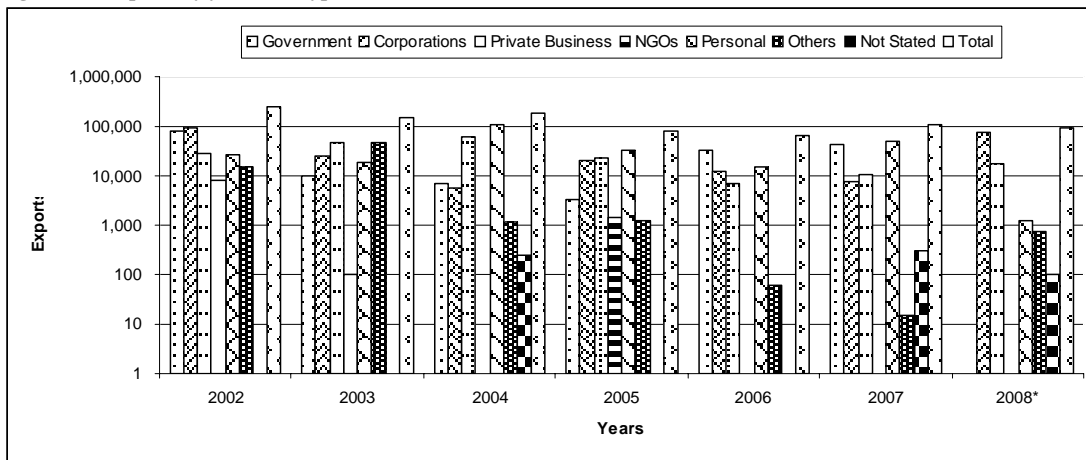
Figure 2.4: Exports (in AU\$1,000) by type and years



* Jan to Mar 2007

Most exports in 2007 were from the group Personal followed by Government with \$48,292 and \$42,485 respectively. (Refer Appendix: Table A13)

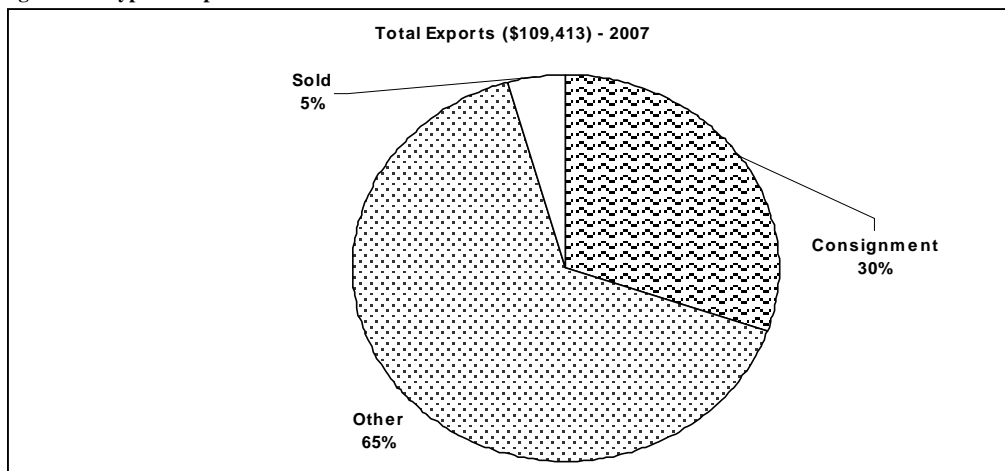
Figure 2.4: Exports by years and type of business



* Jan to Mar 2007

Most imports in 2007 were from Others (\$71,258) followed by Consignment (\$33,155). (Refer to Appendix: Table A14).

Figure 2.5: Type of Exports - 2007



3. ELECTRICITY

A steady increase in the consumption of electricity over the last 8 years. Revenue received in 2007 is only from January to May. Most of the revenue was received from Commercial, then followed by Government and Households. In 2006 commercial consumption accounted for 34.6% of the revenue, 33.6% from households and finally 32.0% from government. The Tuvalu electricity has a total annual receipt of \$1.8m from the consumption of electricity. (Refer to Appendix: Table: A15).

Figure 3.1: Revenue (in \$1,000s) received from consumers by year

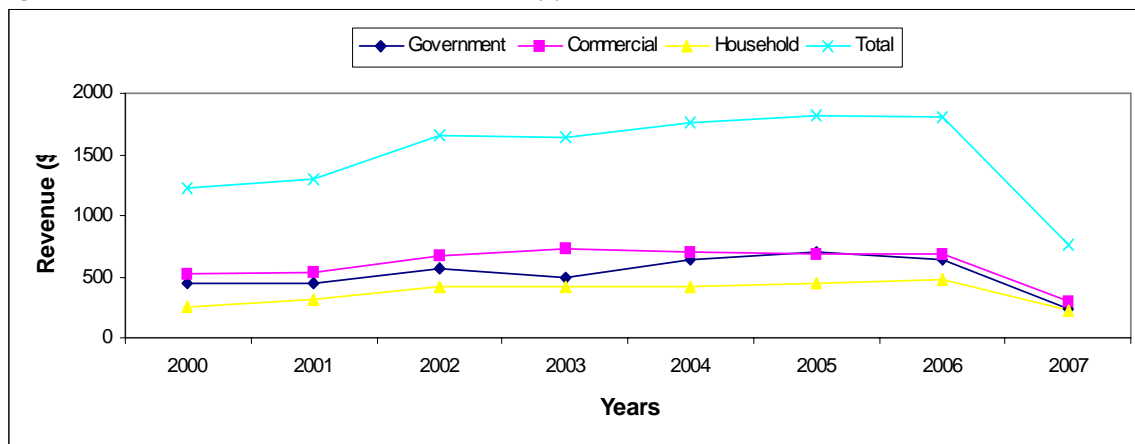
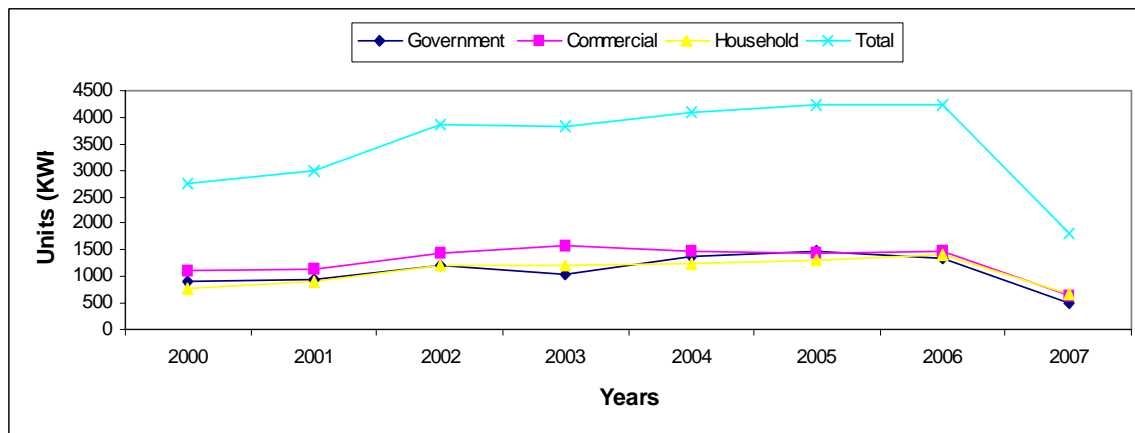
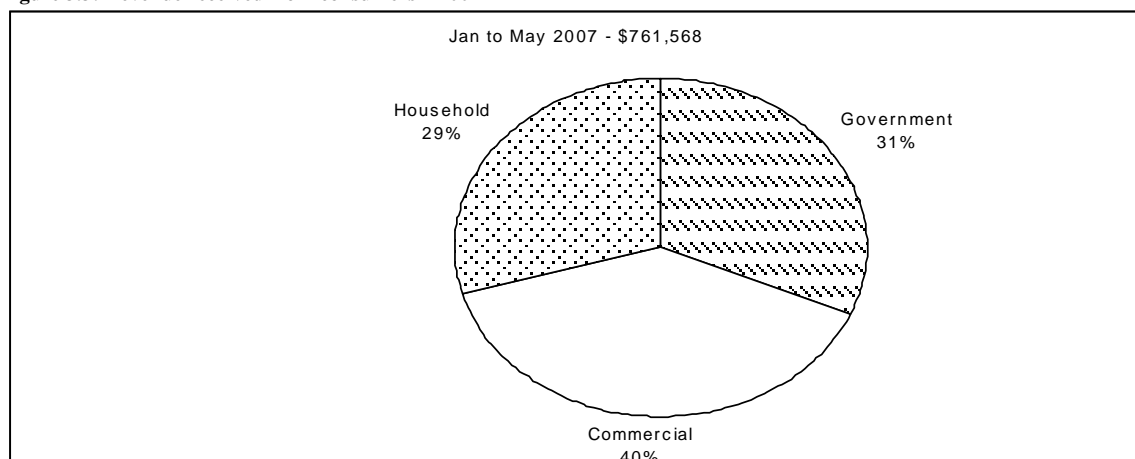


Figure 3.2: Units (in KWH 1,000s) used by consumers by year



In 2007, most revenue was received from Commercial followed by Government with 40% and 31% respectively. (Refer to Appendix: Table A15).

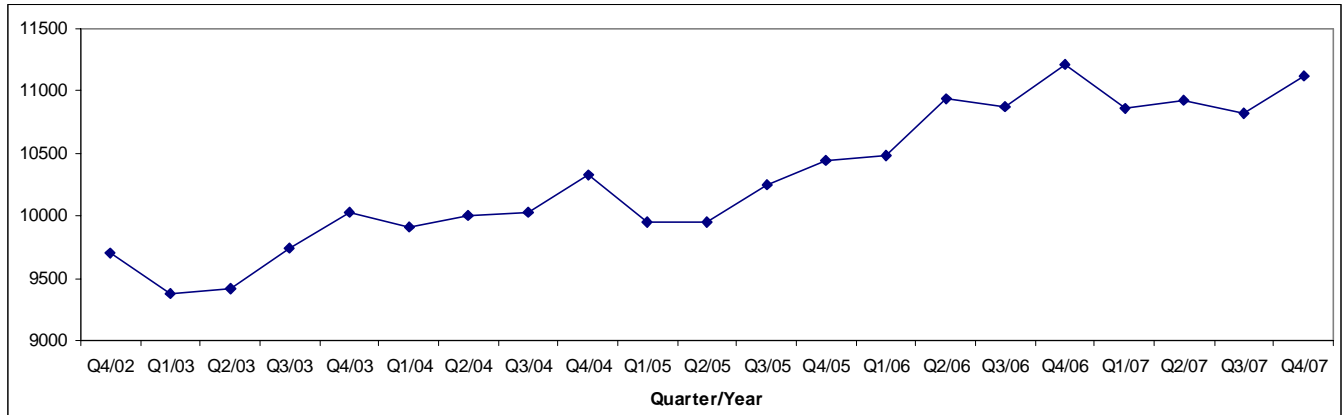
Figure 3.3: Revenue received from consumers – 2007



4. POPULATION

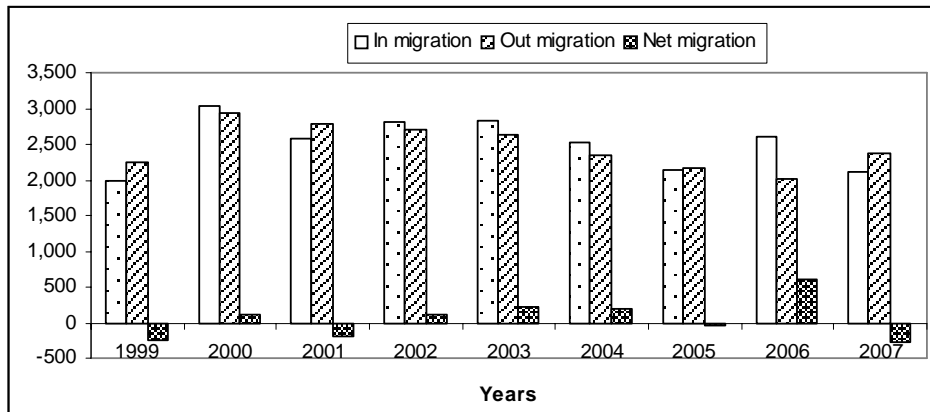
The population tends to increase in the fourth quarter as it marks the returning of residents (especially students) for the holidays but decreases in the first quarter when they depart to their respective countries of studies. (Refer Appendix: Table A17).

Figure 4.1: Resident population by quarters



The high number of 2006 in-migration depicts the return of indentured labourers from Nauru. (Refer to Appendix: Table A18).

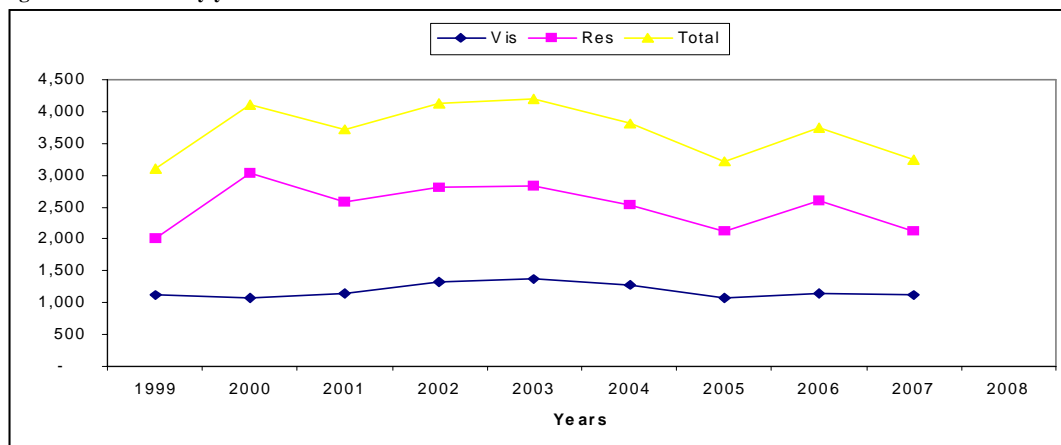
Figure 4.2: Resident migration by years



5. MIGRATION

Arrivals in 2007 dropped by 18.7% as compared to 2006. The high number of resident arrivals in 2006 is attributed the return of indentured labourers from Nauru. (Refer Appendix: Table A20).

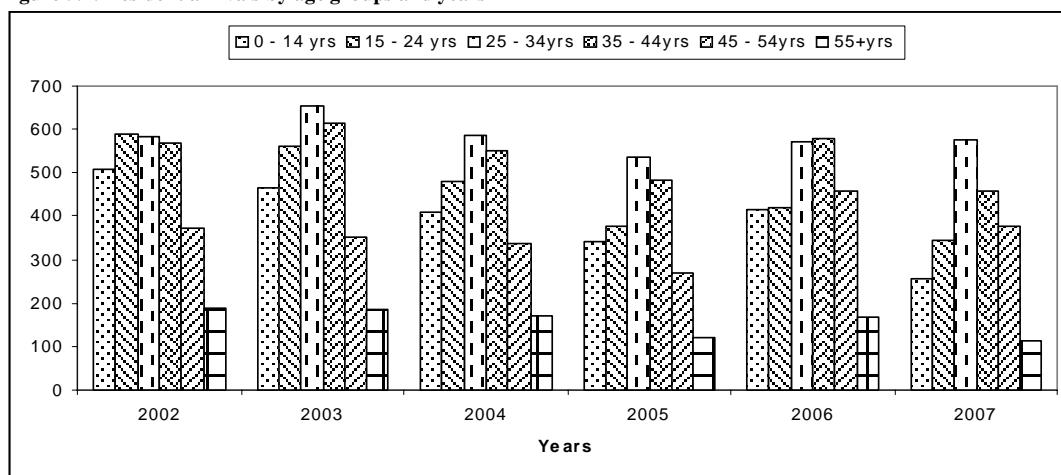
Figure 5.1: Arrivals by years



2008 is from Jan to Jun

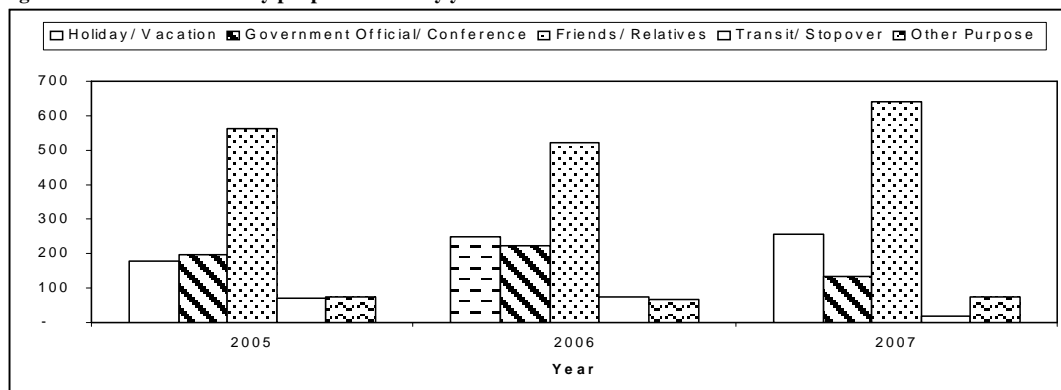
In 2007 most arrivals were in the age group 25-34 years followed by 35-44 years with 574 and 458 respectively. (Refer to Appendix: Table A22).

Figure 5.2: Resident arrivals by age groups and years



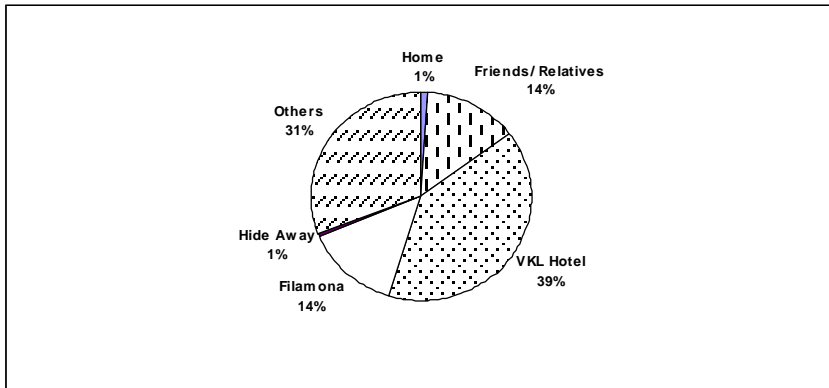
The most popular purpose for coming to the country is the category Friends/Relatives. (Refer to Appendix: Table A23).

Figure 5.3: Visitor arrivals by purpose of visit by years



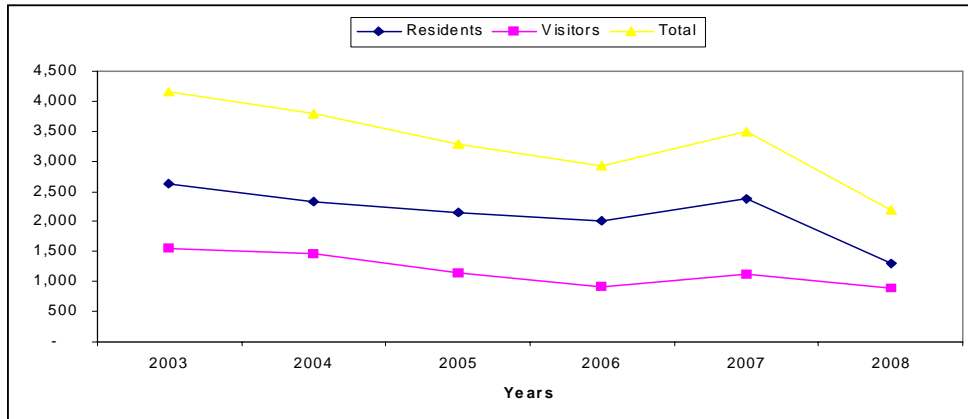
Most visitors preferred to stay at the Vaiaku Lagi Hotel followed by Others with 39% and 31% respectively. (Refer to Appendix: Table A27).

Figure 5.4: Visitor arrivals by places of stay – Jan to Jun 2008



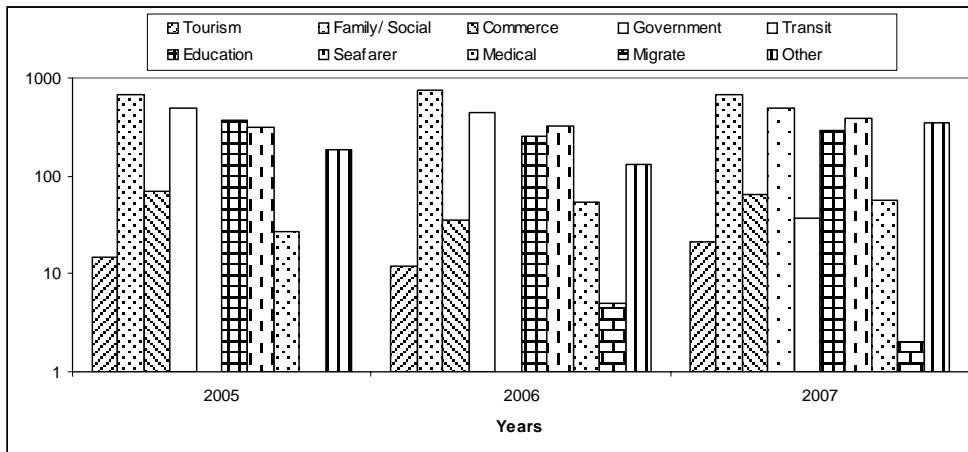
Total departures decreased steadily from 2004 to 2006 and then increased in 2007 by 20%. (Refer to Appendix: Table A28).

Figure 5.5: Resident and visitor departures by years



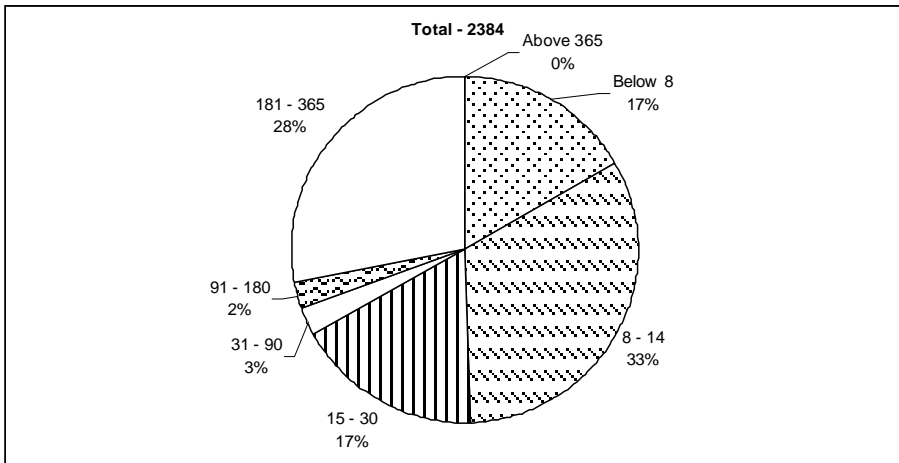
In 2007 most departures are in the category Family/Social followed by Government with 686 and 489 respectively. (Refer to Appendix: Table A30).

Figure 5.6: Resident departures by purpose of travel and years



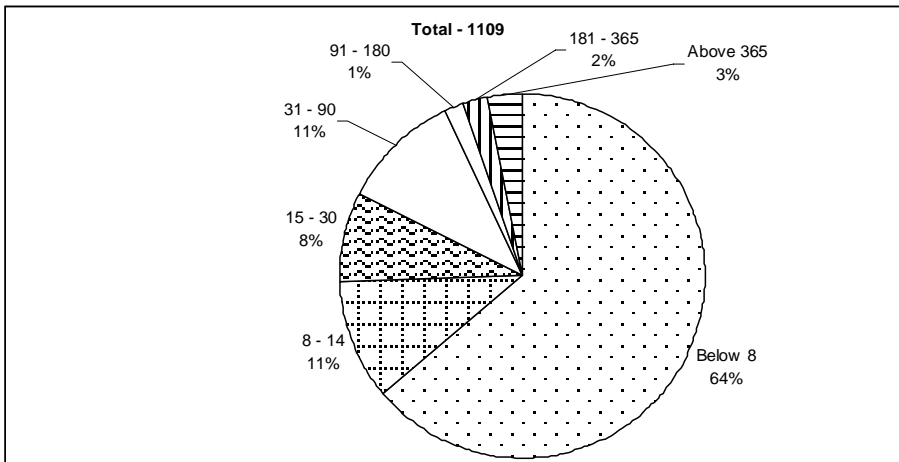
Most of the residents intended to be away to be away for 8-14 days followed by 181-365 days with 32.8% and 28.1% respectively. (Refer to Appendix: Table A32).

Figure 5.7: Resident departures by anticipated period of absence - 2007



Most visitors stayed in the country for a week or less followed by 8-14 days and 31-90 days with 64% and 11% respectively. (Refer to Appendix: Table A33).

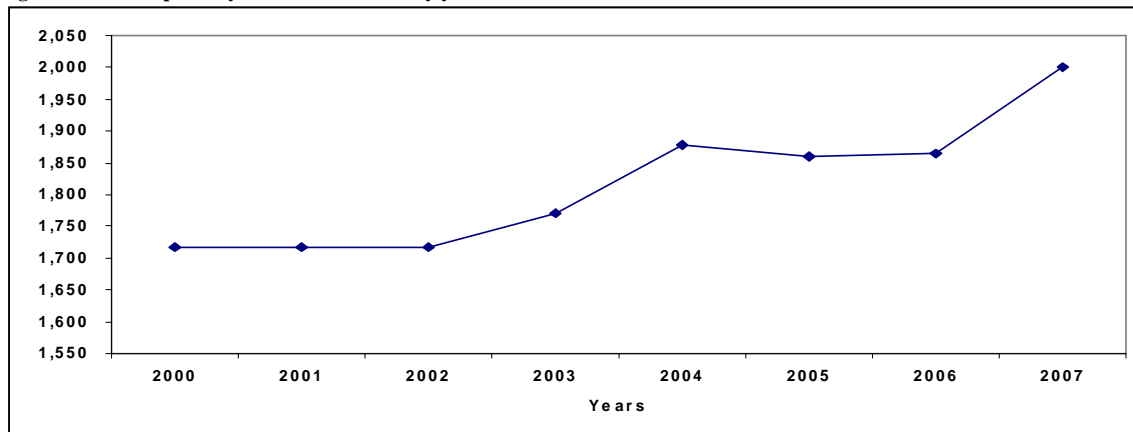
Figure 5.8: Visitor departures by length of stay in days - 2007



6. EDUCATION

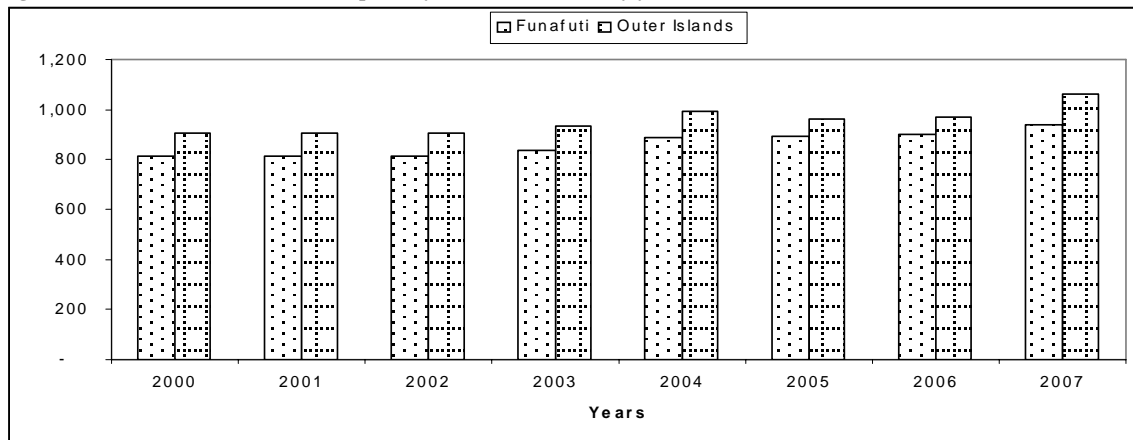
Primary school enrolments increased by 7.3% in 2007. (Refer Appendix: Table A34).

Figure 6.1.: Total primary school enrolments by years



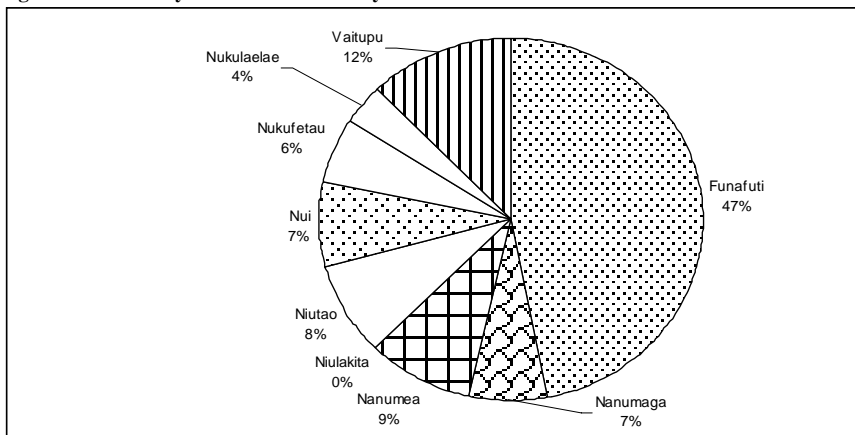
Primary school enrolments for Funafuti and Outer Islands in 2007 increased by 4.5% and 10% respectively. (Refer to Appendix: Table A34).

Figure 6.2: Outer Islands and Funafuti primary school enrolments by years



Funafuti has the highest number of enrolments followed by Vaitupu with 47% and 12% respectively. (Refer to Appendix: Table A34).

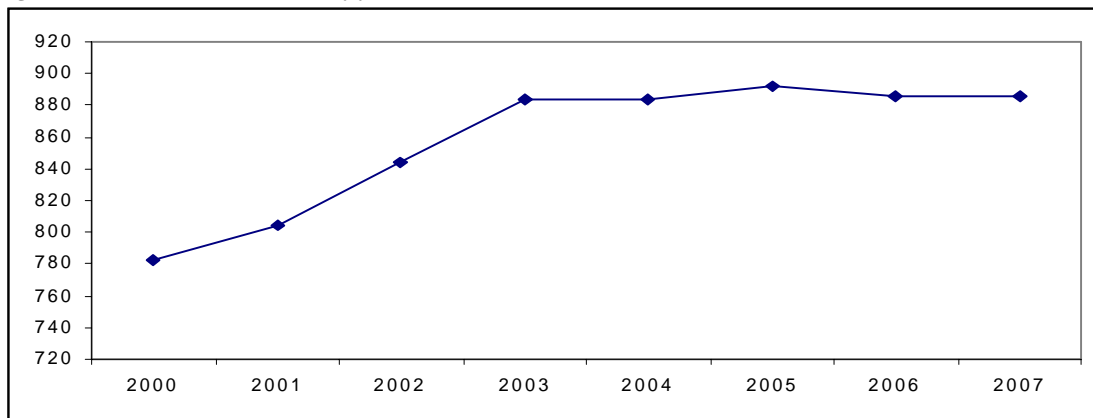
Figure 6.3.: Primary school enrolments by island - 2007



7. CIVIL SERVICE

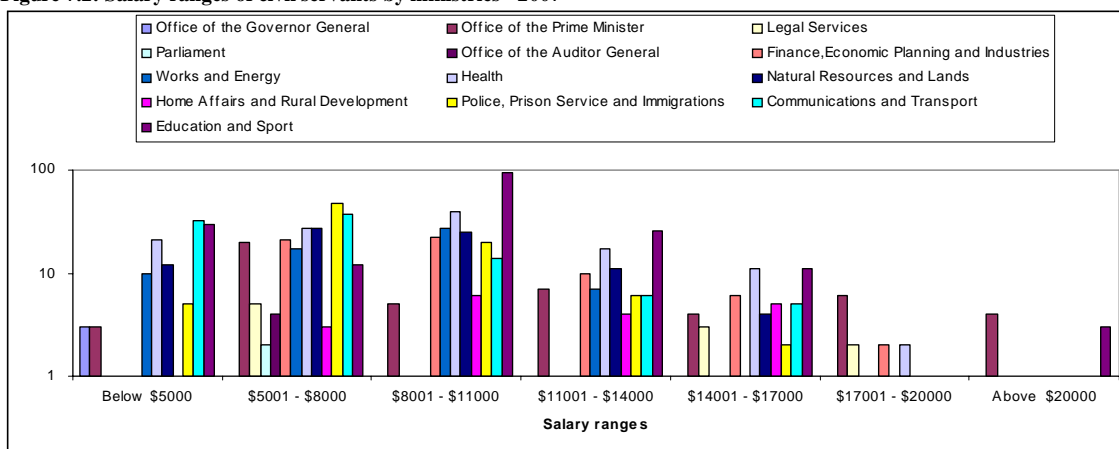
The highest increase in the number of civil servants occurred in 2002 with 5.0% followed by 2003 with 4.7%. (Refer Appendix: Table A38).

Figure 7.1: Number of civil servants by years



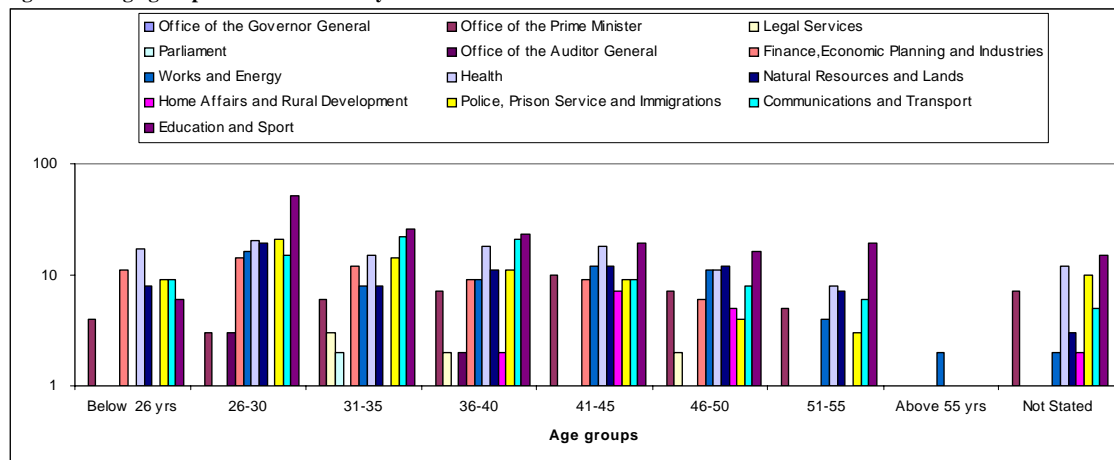
Salaries for most civil servants were in the range \$8,001-\$11,000 followed by \$5,001-\$11,000 with 257 and 222 respectively. (Refer to Appendix: Table A37).

Figure 7.2: Salary ranges of civil servants by ministries - 2007



Most civil servants were in the age group 26-30 followed by 31-35 with 167 and 118 respectively. (Refer to Appendix: Table A36).

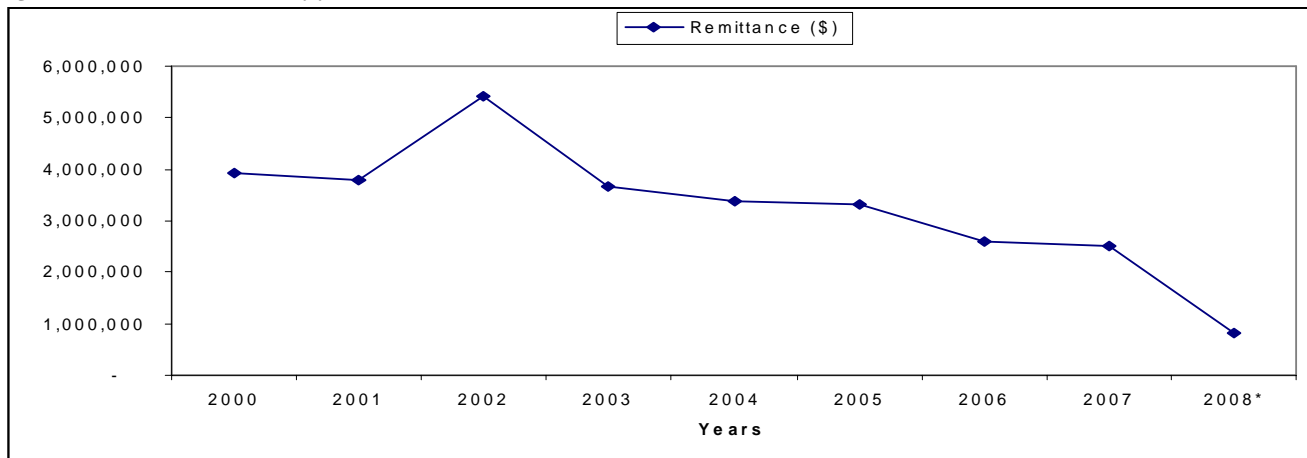
Figure 7.3: Age groups of civil servants by ministries - 2007



8. SEAMEN

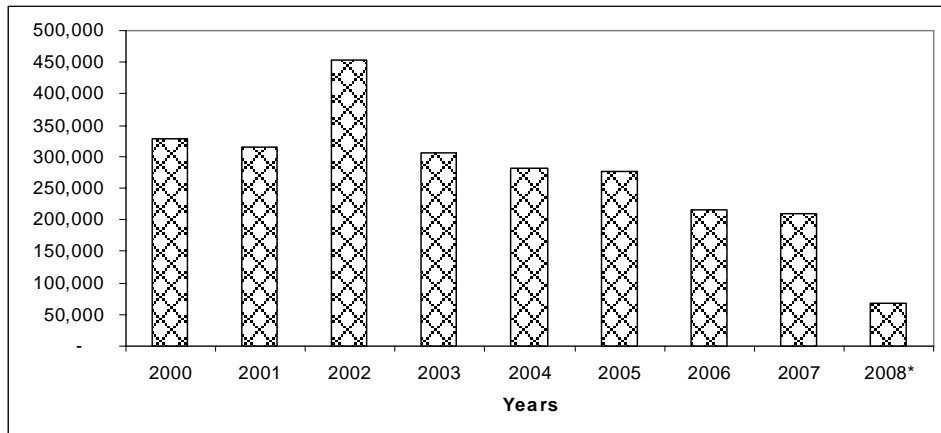
The highest amount received in 2002 (\$5.4 million) depicts the strength of the US dollar at that time as compared to the other years. (Refer Appendix: Table A39).

Figure 8.1: Seamen remittances by years (AU\$)



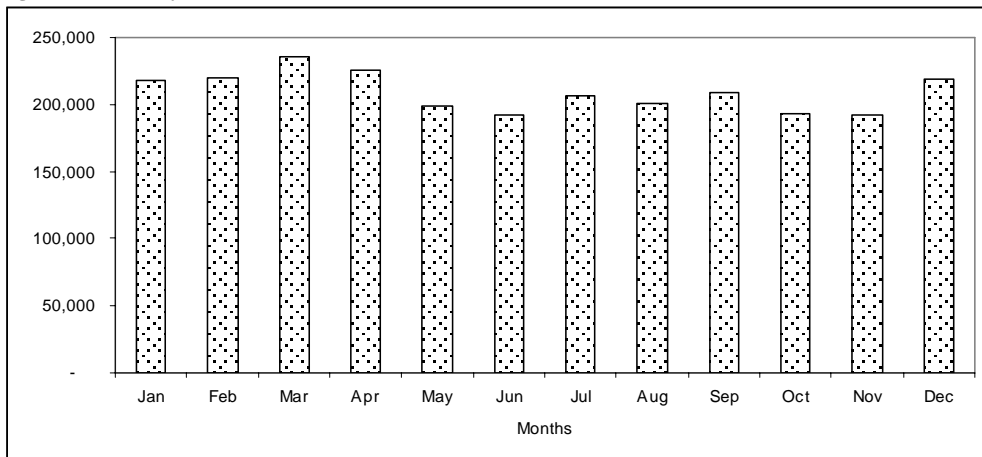
Remittances by seamen per month in 2007 dropped by 3.0% as compared to 2006 with \$209,085 and \$215,633 respectively. (Refer to Appendix: Table A39).

Figure 8.2: Monthly average seamen remittances by years (AU\$)



The month of April records the highest remittance of \$253,638 that amounts to an average per seaman of \$673. (Refer to Appendix: Table A40).

Figure 8.3: Monthly seamen remittances (AU\$) - 2007



9. APPENDIX TABLES

Table A1: Percentage change of the Tuvalu Consumer Price Index by quarters

Quarter	Tuvalu Consumers Price Index (May_2006 = 1000)	Annual Inflation Rate	Quarterly % Change	Annual Average % Change
Feb-04	939.3	5.1	0.7	4.3
May-04	945.0	1.6	0.6	4.4
Aug-04	952.8	2.4	0.8	3.9
Nov-04	952.8	2.2	0.0	2.8
Feb-05	964.3	2.7	1.2	2.2
May-05	978.0	3.5	1.4	2.7
Aug-05	979.6	2.8	0.2	2.8
Nov-05	990.2	3.9	1.1	3.2
Feb-06	998.9	3.6	0.9	3.5
May-06	1000.0	2.3	0.1	3.1
Aug-06	1017.1	3.8	1.7	3.4
Nov-06	1046.0	5.6	2.8	3.8
Feb-07	1027.2	2.8	-1.8	3.6
May-07	1034.0	3.4	0.7	3.9
Aug-07	1038.0	2.1	0.4	3.5
Nov-07	1051.0	0.5	1.3	2.2
Feb-08	1074.6	4.6	2.2	2.6
May-08	1152.0	11.4	7.2	4.6

Table A2: Percentage change of the Tuvalu Consumer Price Index by quarters

Quarter	Food	Alcohol & Tobacco	Clothing & Textiles	Transport	Housing	Miscellaneous	ALL ITEMS
Feb-04	912.0	914.4	915.0	981.6	933.4	994.1	939.3
May-04	915.4	962.5	910.3	964.8	942.5	985.5	945.0
Aug-04	918.3	955.9	911.3	993.2	943.0	1010.5	952.8
Nov-04	921.7	965.5	902.7	977.6	943.5	1012.0	952.8
Feb-05	945.0	969.3	891.7	968.5	955.2	1026.7	964.3
May-05	965.3	998.4	916.6	964.7	973.0	1012.9	978.0
Aug-05	977.1	993.4	939.0	964.3	962.9	1000.7	979.6
Nov-05	981.5	1009.8	947.3	981.8	986.3	995.2	990.2
Feb-06	994.6	1009.4	950.1	999.1	983.4	1005.2	998.9
May-06	1000.0	1000.0	1000.0	1000.0	1000.0	1000.0	1000.0
Aug-06	1009.8	989.3	978.0	1181.5	990.0	993.9	1017.1
Nov-06	1025.6	992.9	1347.1	1182.3	1037.3	982.8	1046.0
Feb-07	1022.7	999.7	1343.0	1029.8	969.7	964.1	1027.2
May-07	979.3	999.7	1343.0	1127.3	980.5	997.8	1034.0
Aug-07	995.7	999.7	1343.0	1178.7	996.0	985.1	1038.0
Nov-07	1012.9	1060.6	1349.3	1156.4	1008.1	985.1	1051.0
Feb-08	1085.4	1058.2	1353.0	1183.3	1042.6	823.8	1074.6
May-08	1179.8	1185.2	1371.7	1489.8	1098.4	847.2	1152.0

Table A3: Imports (AU\$) by major groups by years

Years	Food		Alcohol & Tobacco		Construction		Fuel		Clothing		Others		Total	
	FOB	CIF	FOB	CIF	FOB	CIF	FOB	CIF	FOB	CIF	FOB	CIF	FOB	CIF
2002	3,911,599	5,058,226	589,757	668,764	4,866,051	6,020,562	1,674,897	2,276,843	555,737	593,997	5,218,622	5,960,789	16,816,663	20,579,181
2003	2,516,051	3,097,152	272,670	329,339	2,411,798	2,898,231	781,107	1,044,132	504,391	547,321	3,206,490	3,634,338	9,692,507	11,550,513
2004	3,555,136	4,518,733	532,594	679,197	2,362,874	2,946,807	1,683,050	2,234,652	410,721	488,507	3,987,338	4,677,507	12,531,712	15,545,403
2005	4,346,616	5,491,535	395,237	472,176	1,446,323	1,823,516	2,956,203	3,546,449	750,116	825,431	3,947,896	4,760,832	13,842,392	16,919,940
2006	3,440,035	4,398,080	348,680	423,309	2,123,234	3,162,576	2,817,079	3,274,136	422,518	468,754	3,881,802	5,111,848	13,033,348	16,838,703
2007	4,623,588	5,557,753	442,930	531,115	2,217,325	2,844,891	2,808,922	2,959,266	666,618	751,681	4,904,517	5,741,414	15,663,900	18,386,120
2008*	1,601,821	2,160,222	254,246	296,422	811,186	1,018,568	287,101	330,137	620,358	1,187,273	1,963,966	2,469,576	5,538,678	7,462,198

* Jan to Mar 2008

Table A4: Imports (AU\$) by years by quarters

Quarters	2002		2003		2004		2005		2006		2007		2008	
	FOB	CIF	FOB	CIF	FOB	CIF	FOB	CIF	FOB	CIF	FOB	CIF	FOB	CIF
Qtr1	3,376,712	4,116,329	599,073	704,045	3,150,467	3,929,190	3,191,847	4,046,623	150,108	204,251	2,194,879	2,744,717	5,538,678	7,462,198
Qtr2	3,677,326	4,506,070	1,040,654	1,140,358	2,849,136	3,506,844	2,900,493	3,551,358	2,302,787	3,426,089	3,463,965	3,978,440		
Qtr3	4,620,454	5,685,177	4,177,682	5,072,691	2,770,200	3,456,966	4,304,356	5,282,162	4,100,669	4,941,301	4,250,856	4,929,703		
Qtr4	5,142,171	6,271,605	3,875,098	4,633,419	3,761,910	4,652,403	3,445,696	4,039,797	6,479,784	8,267,062	5,754,200	6,733,260		
Total	16,816,663	20,579,181	9,692,507	11,550,513	12,531,712	15,545,403	13,842,392	16,919,940	13,033,348	16,838,703	15,663,900	18,386,120	5,538,678	7,462,198

Table A5: Imports (AU\$) by years by regions of origin

Region	2002		2003		2004		2005		2006		2007		2008	
	FOB	CIF	FOB	CIF	FOB	CIF	FOB	CIF	FOB	CIF	FOB	CIF	FOB	CIF
Africa	21,930	22,661	48	48	47,655	47,772	-	-	727	727	8,472	14,696		
Americas	22,469	32,032	234,245	243,728	278,503	290,276	49,313	51,640	45,406	50,783	542,930	567,958	1,691	1,852
Asia	1,102,452	1,443,912	2,094,744	2,438,241	2,422,182	2,918,418	4,644,651	5,549,741	5,503,714	7,164,355	4,600,177	5,516,643	1,571,006	2,063,634
European Union	56,276	66,288	154,150	161,629	14,351	15,964	362,648	538,444	151	215	33,762	37,876	7,353	8,341
Eastern Europe	-	-	505	505	-	-	-	-	-	-	-	-	-	-
Europe	8,237	9,392	7,229	7,412	17,041	18,191	39,930	39,930	6,050	6,733	598	609		
Middle East	-	-	-	-	-	-	-	-	-	-	658,003	710,647		
Oceania	15,605,299	19,004,896	7,201,586	8,698,950	9,751,981	12,254,782	8,745,850	10,740,185	7,477,300	9,615,890	9,819,958	11,537,691	3,958,628	5,388,371
Total	16,816,663	20,579,181	9,692,507	11,550,513	12,531,712	15,545,403	13,842,392	16,919,940	13,033,348	16,838,703	15,663,900	18,386,120	5,538,678	7,462,198

Table A6: Imports (AU\$) by years by regions of export

Region	2002		2003		2004		2005		2006		2007		2008	
	FOB	CIF	FOB	CIF	FOB	CIF	FOB	CIF	FOB	CIF	FOB	CIF	FOB	CIF
Africa	1,316	1,604	779	852	972	1,038	-	-	727	727	-	-	-	-
Americas	125,276	132,461	223,742	232,640	9,189	9,397	29,767	31,347	47,457	52,066	62,799	63,500	1,435	1,287
Asia	3,302,540	4,029,392	515,329	596,334	899,364	1,079,980	1,017,488	1,294,362	2,442,166	3,508,012	1,460,424	1,962,807	526,642	740,315
European Union	83,472	93,362	97,405	101,964	12,216	13,322	343,710	514,876	-	-	88,115	92,445	2,017	2,096
Eastern Europe														
Europe	392	392	222	222	-	-	-	-	-	-	-	-	-	-
Europe	136,407	146,404	300	300	532	532	-	-	-	-	-	-	-	-
Oceania	13,167,260	16,175,566	8,854,730	10,618,201	11,609,439	14,441,134	12,451,427	15,079,355	10,542,998	13,277,898	14,052,562	16,267,368	5,008,584	6,718,500
Total	16,816,663	20,579,181	9,692,507	11,550,513	12,531,712	15,545,403	13,842,392	16,919,940	13,033,348	16,838,703	15,663,900	18,386,120	5,538,678	7,462,198

Table A7: Imports (AU\$) by major groups by countries of export - 2007

Countries	Food		Alcohol & Tobacco		Construction		Fuel		Clothing		Others		Total	
	FOB	CIF	FOB	CIF	FOB	CIF	FOB	CIF	FOB	CIF	FOB	CIF	FOB	CIF
Australia	2,455,732	3,106,240	382,385	457,381	104,810	138,387	67,166	104,837	25,090	35,395	1,088,702	1,227,724	4,123,885	5,069,964
China	69,666	115,478	641	952	118,579	183,720	375	650	32,729	54,051	364,540	509,145	586,530	863,996
Fiji	1,708,550	1,817,893	29,560	35,330	1,562,660	1,989,462	1,960,409	2,093,714	564,276	603,264	2,306,237	2,633,405	8,131,692	9,173,068
Germany	-	-	-	-	-	-	-	-	-	-	85,118	87,318	85,118	87,318
Hong Kong	13,948	19,322	972	1,347	32,662	45,873	-	-	13,950	17,226	45,688	60,246	107,220	144,014
India	-	-	-	-	414	470	-	-	4,014	4,558	5,659	6,426	10,087	11,454
Japan	599	769	-	-	40,507	41,650	-	-	1,337	1,341	245,032	336,632	287,475	380,392
Malaysia	16,991	22,437	-	-	-	-	-	-	-	-	107,938	125,767	124,929	148,204
New Zealand	271,095	383,046	21,916	28,029	254,399	332,487	563,434	498,578	21,921	26,025	588,732	678,042	1,721,497	1,946,207
Republic of Korea	-	-	-	-	-	-	-	-	-	-	3,431	6,745	3,431	6,745
Samoa	64,056	65,210	5,916	6,536	1,499	1,521	-	-	606	606	3,196	4,114	75,273	77,987
Singapore	15,234	19,681	-	-	18,800	23,794	217,538	261,487	-	-	7,831	10,917	259,403	315,879
Taiwan	7,717	7,677	1,540	1,540	9,540	10,637	-	-	1,214	7,807	22,593	23,099	42,604	50,760

Table A8: Imports (AU\$) by major groups by importers – 2007

Importer	Food		Alcohol & Tobacco		Construction		Fuel		Clothing		Others		Total	
	FOB	CIF	FOB	CIF	FOB	CIF	FOB	CIF	FOB	CIF	FOB	CIF	FOB	CIF
Government	-	-	19,422	20,636	604,846	772,811	949	1,011	23,309	25,475	900,585	1,009,129	1,549,111	1,829,062
Corporations	415,968	498,416	432,485	464,422	721,775	929,184	3,679,212	4,593,554	454,452	540,109	2,312,673	2,626,535	8,016,565	9,652,220
Private Businesses	16,501	20,812	191,177	238,622	604,684	806,072	864,796	882,979	152,410	160,896	1,032,171	1,365,484	2,861,739	3,474,865
NGOs	-	-	-	-	1,432	2,041	361	419	-	-	39,225	46,948	41,018	49,408
Personal	961	1,037	19,455	17,180	124,266	143,733	62,807	63,153	14,303	14,303	245,164	275,560	466,956	514,966
Others	9,470	10,815	3,212	10,008	132,696	153,184	3,558	3,685	2,121,080	2,164,732	337,161	373,138	2,607,177	2,715,562
Not Stated	30	35	867	813	27,626	37,866	11,905	12,952	43,368	53,751	37,538	44,620	121,334	150,037
Total	442,930	531,115	666,618	751,681	2,217,325	2,844,891	4,623,588	5,557,753	2,808,922	2,959,266	4,904,517	5,741,414	15,663,900	18,386,120

Table A9: Imports (AU\$) by major groups by importers – 2007

Major Group Items	Qtr1		Qtr2		Qtr3		Qtr4		Total	
	FOB	CIF	FOB	CIF	FOB	CIF	FOB	CIF	FOB	CIF
CONSTRUCTION	311,506	399,100	368,901	472,723	497,825	660,908	1,039,093	1,312,160	2,217,325	2,844,891
asbestos	3,145	3,606	5,119	6,147	7,431	10,301	20,136	25,061	35,831	45,115
bricks or blocks	240	372	550	736	-	-	2,305	2,899	3,095	4,007
cement	14,237	19,084	34,182	46,272	69,157	108,227	78,524	114,648	196,100	288,231
ceramic	2,809	3,435	6,452	8,260	3,065	4,002	7,004	8,821	19,330	24,518
glass (e.g mirror, window, glassware)	1,208	1,470	3,936	4,829	1,991	2,366	11,924	15,442	19,059	24,107
furniture	10,142	18,530	18,807	28,641	7,474	10,092	27,292	38,860	63,715	96,123
iron, steel & alloys (incl. wire, screw & nails)	95,215	113,392	108,927	133,497	84,205	102,730	299,344	367,753	587,691	717,372
lighting	-	-	3,147	4,072	1,282	1,754	21,924	26,282	26,353	32,108
paints	14,036	16,663	10,951	13,697	14,954	19,667	63,429	72,490	103,370	122,517
tiles	330	522	1,142	1,971	3,140	4,708	-	-	4,612	7,201
timber	-	-	392	392	-	-	202	232	594	624
tools	5,209	6,377	8,715	10,786	15,282	18,089	16,593	20,887	45,799	56,139
wood materials	72,700	97,238	67,328	87,031	102,892	137,355	215,941	303,053	458,861	624,677
other	92,235	118,411	99,253	126,392	186,952	241,617	274,475	315,732	652,915	802,152

Table A9: continued

Major Group Items	Qtr1		Qtr2		Qtr3		Qtr4		Total	
	FOB	CIF	FOB	CIF	FOB	CIF	FOB	CIF	FOB	CIF
FOOD	593,439	786,696	1,406,705	1,464,061	1,407,755	1,796,222	1,215,689	1,510,774	4,623,588	5,557,753
beverages	11,989	14,830	29,236	34,203	26,034	30,840	23,460	27,501	90,719	107,374
biscuits	24,631	28,758	71,968	83,635	86,243	103,824	60,496	71,092	243,338	287,309
biscuits (other)	11,781	13,725	247,621	44,824	20,575	24,588	17,007	21,136	296,984	104,273
butter	3,525	4,955	13,767	20,695	9,815	14,686	10,102	12,119	37,209	52,455
canned fish	5,322	7,152	15,216	18,126	56,128	88,523	64,042	74,715	140,708	188,516
chicken	907	1,217	-	-	1,649	2,303	3,076	4,196	5,632	7,716
cocoa	672	713	3,569	4,023	755	973	2,232	2,511	7,228	8,220
confectionery	21,724	25,731	48,312	56,432	24,375	28,742	27,212	30,903	121,623	141,808
egg	12,931	19,973	13,885	21,587	14,208	21,444	14,579	18,513	55,603	81,517
fats & oil	9,235	14,057	30,438	40,046	19,186	27,342	15,785	19,336	74,644	100,781
fish & seafood	27	27	157	157	192	192	-	-	376	376
flour	29,778	42,752	59,577	82,824	54,842	72,120	43,807	58,820	188,004	256,516
fruits	13,785	21,396	22,273	36,075	17,637	26,595	15,819	22,829	69,514	106,895
ice cream	11,880	16,953	9,722	8,397	17,810	25,067	12,156	17,452	51,568	67,869
kava	2,600	2,600	3,715	3,715	6,120	6,120	6,485	6,485	18,920	18,920
margarine	-	-	22,438	27,165	36,485	42,754	72	72	58,995	69,991
meat	101,194	139,696	106,303	137,606	89,864	125,097	197,652	261,771	495,013	664,170
milk	44,973	49,513	111,142	134,044	67,880	79,090	56,314	65,421	280,309	328,068
rice	99,033	131,730	108,859	82,902	207,658	267,717	94,625	122,827	510,175	605,176
salted beef	40	40	13,764	14,522	3,531	3,595	34,690	36,375	52,025	54,532
sugar	38,365	53,237	68,773	94,035	80,499	96,355	75,054	101,616	262,691	345,243
vegetables	22,154	33,912	34,495	53,655	47,931	69,583	37,335	55,362	141,915	212,512
other	126,893	163,729	371,475	465,393	518,338	638,672	403,689	479,722	1,420,395	1,747,516
ALCOHOL & TOBACCO	90,001	105,658	113,638	130,438	110,283	136,102	129,008	158,917	442,930	531,115
beer	22,825	30,998	22,825	30,998	52,466	69,779	52,537	69,635	150,653	201,410
cigarettes	34,895	36,518	40,899	42,786	19,634	20,662	28,240	32,683	123,668	132,649
spirits (rum, gin & others)	6,283	6,991	7,771	8,820	5,619	7,279	13,792	17,843	33,465	40,933
tobacco	19,200	22,568	32,400	36,618	21,600	24,685	19,260	21,586	92,460	105,457
wine	6,041	7,396	8,745	9,951	7,284	8,231	12,660	14,249	34,730	39,827
other	757	1,187	998	1,265	3,680	5,466	2,519	2,921	7,954	10,839
FUEL	744,905	905,826	618,546	736,956	552,655	401,007	892,816	915,477	2,808,922	2,959,266
diesel	545,217	661,505	345,152	415,313	192,106	58,908	597,481	534,580	1,679,956	1,670,306
gas	-	-	104,775	112,647	107,592	126,616	45,654	46,619	258,021	285,882
jet fuel	55,251	65,824	47,919	59,229	86,942	104,002	67,140	104,808	257,252	333,863
kerosene	-	-	-	-	-	-	44,542	44,542	44,542	44,542
oil	14	21	2,890	8,495	2,685	4,515	3,070	5,301	8,659	18,332
petrol	144,402	178,453	116,953	140,225	163,323	106,958	134,929	179,627	559,607	605,263
other	21	23	857	1,047	7	8	-	-	885	1,078
CLOTHING	100,814	118,130	138,315	149,496	142,668	162,253	284,821	321,802	666,618	751,681
cotton	24	43	38	58	351	488	1,056	1,155	1,469	1,744
fabrics	52,740	59,896	54,675	58,021	31,137	32,998	55,140	59,136	193,692	210,051
footwear	8,315	11,114	14,705	18,480	36,535	45,496	22,659	29,380	82,214	104,470
shirts	2,865	3,278	6,497	4,692	3,175	3,367	12,865	13,961	25,402	25,298
other	36,870	43,799	62,400	68,245	71,470	79,904	193,101	218,170	363,841	410,118
OTHERS	354,214	429,307	817,860	1,024,766	1,539,670	1,773,211	2,192,773	2,514,130	4,904,517	5,741,414
bicycles	3,785	7,844	11,295	21,526	19,267	28,506	28,068	38,533	62,415	96,409
electronics	14,428	15,869	14,354	17,008	20,616	27,914	89,298	97,757	138,696	158,548
fertilizers	-	-	-	-	33,146	37,750	-	-	33,146	37,750
firearms	-	-	888	1,234	1,098	1,212	212	235	2,198	2,681
housing (air con, refrigerator, heater, etc)	3,945	5,939	57,073	98,823	5,889	7,355	68,691	80,138	135,598	192,255
machinery	113,259	129,999	202,328	232,129	275,842	310,982	414,359	488,647	1,005,788	1,161,757
medical	2,161	3,351	1,352	1,891	15,715	16,995	8,713	9,035	27,941	31,272
motor cars	41,107	49,556	-	-	46,031	75,139	31,687	47,104	118,825	171,799
motor vehicles	27,621	34,441	82,294	105,160	37,308	43,490	19,626	32,911	166,849	216,002
motorcycles	1,000	1,550	80,115	99,254	61,604	80,636	74,806	99,162	217,525	280,602
records & media	5,559	6,873	9,247	12,268	14,160	17,373	18,582	23,634	47,548	60,148
telecommunication	503	503	27,495	28,694	32,218	34,266	685,546	740,344	745,762	803,807
other	140,846	173,382	331,419	406,779	976,776	1,091,593	753,185	856,630	2,202,226	2,528,384
Total	2,194,879	2,744,717	3,463,965	3,978,440	4,250,856	4,929,703	5,754,200	6,733,260	15,663,900	18,386,120

Table A10: Imports (AU\$) by major groups and items – Jan to Mar 2008

Major Group Items	Qtr1		Major Group Items	Qtr1	
	FOB	CIF		FOB	CIF
<i>FOOD</i>	1,601,821	2,160,222	<i>CONSTRUCTION</i>	811,186	1,018,568
beverages	22,560	26,601	asbestos	4,499	5,026
biscuits	106,426	128,243	bricks or blocks	769	881
biscuits (other)	32,354	35,859	cement	47,938	64,776
butter	16,608	21,735	ceramic	6,307	8,452
canned fish	43,024	49,539	class (e.g mirror, window, glassware)	5,968	7,770
chicken	5,717	7,382	furniture	25,223	40,495
cocoa	147	162	iron, steel & alloys (incl. wire, screw & nails)	249,072	297,553
confectionery	34,240	43,071	lighting	4,573	5,823
egg	16,494	23,585	paints	28,270	32,778
fats & oil	13,411	16,093	tiles	1,650	2,939
fish & seafood	306	433	timber	91,468	101,162
flour	112,386	248,007	tools	13,481	18,107
fruits	18,493	29,228	wood materials	119,865	151,082
ice cream	22,547	33,422	other	212,103	281,724
kava	2,847	2,847	<i>CLOTHING</i>	287,101	330,137
margarine	222	222	cotton	468	690
meat	324,265	430,362	fabrics	104,208	113,956
milk	110,720	129,806	footwear	13,466	20,291
rice	222,854	282,123	shirts	13,463	15,780
salted beef	12,264	13,318	silk	2,572	2,711
sugar	73,776	104,424	other	152,924	176,709
vegetables	49,583	76,172	<i>FUEL</i>	620,358	1,187,273
other	360,577	457,588	diesel	351,268	808,627
<i>ALCOHOL & TOBACCO</i>	254,246	296,422	gas	31,370	33,539
beer	67,541	91,310	jet fuel	34,963	54,398
cigarettes	38,855	40,932	kerosene	37,977	46,116
spirits (rum,gin & others)	9,317	12,928	oil	989	1,012
tobacco	122,370	132,056	petrol	163,791	243,581
wine	14,624	17,531	<i>OTHERS</i>	1,963,966	2,469,576
other	1,539	1,665	bicycles	26,708	37,549
			electronics	21,808	25,597
			housing (air con, refrigerator, heater, etc)	81,144	100,753
			machinery	528,887	665,146
			medical	3,066	4,551
			motor cars	58,645	87,417
			motor vehicles	169,306	239,689
			motorcycles	141,553	182,516
			records & media	21,545	27,569
			telecommunication	3,832	4,742
			other	907,472	1,094,047
			TOTAL	5,538,678	7,462,198

Table A11: Exports (AU\$) by years and types of export

Export Type	2002	2003	2004	2005	2006	2007	2008*
Consignment	23,383	4,680	1,900		31,100	33,155	81,283
Other	152,159	134,365	172,786	79,414	36,852	71,258	1,160
Sold	76,943	8,759	6,920	2,600		5,000	11,460
Total	252,485	147,804	181,606	82,014	67,952	109,413	93,903

*From Jan to Mar 2008

Table A12: Exports (AU\$) by years and countries

Countries	2002	2003	2004	2005	2006	2007	2008*
Australia	56,345	15,950	800	1,661	10,300		
El Salvador						5,000	
Fiji	148,565	120,844	178,957	63,778	23,985	101,901	82,428
Hong Kong							10,000
Indonesia				2,000			
Japan	14,400	1,100			250		
Republic of Korea			800				
New Caledonia	500						
New Zealand	28,675	7,910	549	14,575	31,358	2,462	1,475
Tonga		2,000					
United Kingdom						50	
United States of America	4,000		500		2,059		
Total	252,485	147,804	181,606	82,014	67,952	109,413	93,903

*From Jan to Mar 2008

Table A13: Exports (AU\$) by years and type of business

Business Type	2002	2003	2004	2005	2006	2007	2008*
Government	83,943	9,984	6,920	3,270	33,109	42,485	
Corporations	91,351	24,367	5,897	20,730	12,700	7,755	74,133
Private Business	28,442	46,550	62,986	23,250	6,991	10,566	17,700
NGOs	7,881	100		1,400			
Personal	26,053	18,880	104,376	32,119	15,091	48,292	1,210
Others	14,815	47,923	1,177	1,245	61	15	760
Not Stated			250			300	100
Total	252,485	147,804	181,606	82,014	67,952	109,413	93,903

*From Jan to Mar 2008

Table A14: Type of exports (AU\$) and years by type of business

Business Type	2007				2008			
	Consignment	Other	Sold	Total	Consignment	Other	Sold	Total
Government		42,485		42,485				
Corporations	1,425	6,330		7,755	74,133			74,133
Private Business	480	10,086		10,566	6,240		11,460	17,700
NGOs								
Personal	31,250	12,042	5,000	48,292	810	400		1,210
Others		15		15		760		760
Not Stated		300		300	100			100
Total	33,155	71,258	5,000	109,413	81,283	1,160	11,460	93,903

*From Jan to Mar 2008

Table A15: Electricity usage and revenues by consumers

Consumer	2000		2001		2002		2003	
	Units	\$	Units	\$	Units	\$	Units	\$
Government	896,357	454,182	945,762	444,508	1,197,334	562,746	1,041,958	489,715
Commercial	1,100,725	517,335	1,152,515	541,681	1,438,250	675,976	1,571,481	738,589
Household	762,254	259,168	906,396	308,172	1,223,488	416,286	1,208,091	410,748
Total	2,759,336	1,230,685	3,004,673	1,294,361	3,859,072	1,655,008	3,821,530	1,639,052

Consumer	2004		2005		2006		2007*	
	Units	\$	Units	\$	Units	\$	Units	\$
Government	1,372,814	647,437	1,480,121	695,656	1,353,678	636,229	506,396	238,006
Commercial	1,486,092	698,463	1,447,471	680,312	1,465,916	688,981	636,561	299,184
Household	1,233,445	419,371	1,298,512	441,494	1,415,504	481,271	659,935	224,378
Total	4,092,351	1,765,271	4,226,104	1,817,462	4,235,098	1,806,481	1,802,892	761,568

*From Jan to May 2007

Table A16: Electricity by years and months

Months	2004						2005					
	Government		Commercial		Household		Government		Commercial		Household	
	Units	\$	Units	\$	Units	\$	Units	\$	Units	\$	Units	\$
January	85,388	40,132	116,727	54,861	101,856	34,631	126,948	59,666	116,480	54,746	107,221	36,455
February	72,521	34,084	98,318	46,209	79,124	26,902	101,288	47,605	87,901	41,313	77,817	26,458
March	86,264	40,544	128,014	60,167	102,333	34,793	102,692	48,265	116,905	54,945	97,840	33,266
April	93,727	46,266	133,371	62,684	114,264	38,850	118,607	55,745	130,066	61,131	119,168	40,517
May	110,481	51,926	124,717	58,617	92,182	31,342	118,039	55,478	108,378	61,131	107,502	36,551
June	118,175	55,542	136,627	64,215	105,403	35,837	126,773	59,583	99,395	46,716	108,691	36,955
July	110,982	52,162	131,157	61,644	100,622	34,211	136,241	64,033	133,933	62,949	110,190	37,465
August	162,195	76,232	118,533	55,711	100,903	34,307	131,094	61,614	122,592	57,618	105,671	35,928
September	144,034	67,696	112,937	53,080	110,796	37,671	125,756	59,105	120,863	56,806	103,616	35,229
October	132,308	62,185	103,781	48,777	94,324	32,070	132,878	62,453	136,710	64,254	119,401	40,596
November	130,510	61,340	134,293	63,118	114,240	38,842	147,457	69,305	148,403	69,749	127,321	43,289
December	126,229	59,328	147,617	69,380	117,398	39,915	112,348	52,804	125,845	59,147	114,074	38,785
Total	1,372,814	647,437	1,486,092	698,463	1,233,445	419,371	1,480,121	695,656	1,447,471	680,312	1,298,512	441,494

Months	2006						2007					
	Government		Commercial		Household		Government		Commercial		Household	
	Units	\$	Units	\$	Units	\$	Units	\$	Units	\$	Units	\$
January	131,946	62,015	120,058	56,427	114,369	38,885	111,053	52,195	123,480	58,035	145,845	49,587
February	95,333	44,807	109,427	51,430	100,999	34,339	94,166	44,258	127,515	59,932	128,184	43,582
March	115,863	54,456	111,558	52,432	107,172	36,438	93,768	44,071	136,543	64,175	120,017	40,805
April	127,779	60,056	135,733	63,794	130,832	44,482	102,003	47,941	119,887	56,346	127,967	43,508
May	110,238	51,812	139,233	65,439	113,764	38,679	105,406	49,541	129,136	60,693	137,922	46,893
June	125,466	58,969	121,890	57,288	124,195	42,226						
July	117,514	55,231	110,328	51,854	112,740	38,331						
August	116,909	54,947	148,216	69,661	123,944	42,140						
September	112,749	52,992	108,300	50,901	120,288	40,897						
October	90,333	42,456	119,027	55,942	118,389	40,252						
November	113,060	53,138	118,303	55,602	122,004	41,481						
December	96,488	45,349	123,843	58,206	126,808	43,114						
Total	1,353,678	636,229	1,465,916	688,981	1,415,504	481,271	506,396	238,006	636,561	299,184	659,935	224,378

Table A17: Resident population by quarters

Quarter	2002	2003	2004	2005	2006	2007
Qtr1	-	9,379	9,905	9,956	10,488	10,866
Qtr2	-	9,422	10,008	9,953	10,935	10,924
Qtr3	-	9,736	10,033	10,249	10,875	10,826
Qtr4	9,709	10,029	10,326	10,447	11,220	11,126
Growth rate	-	3.3%	3.0%	1.2%	7.4%	-0.8%

Table A18: Resident migration by years

	1999	2000	2001	2002	2003	2004	2005	2006	2007
In migration	1,999	3,045	2,589	2,813	2,835	2,532	2,131	2,611	2,122
Out migration	2,235	2,926	2,777	2,700	2,617	2,336	2,157	2,010	2,384
Net migration	-236	119	-188	113	218	196	-26	601	-262
Net migration rate	-	-	-	11.6	21.7	19.0	-2.5	53.9	-23.8

Table A19: Births and deaths by years

Table A#: Births and deaths by years

	1999	2000	2001	2002	2003	2004	2005*	2006*	2007*
Births	231	231	197	156	185	190	221	217	214
Deaths	84	109	86	87	83	89	73	45	47
Natural increase	147	122	111	69	102	101	148	172	167
Rate of natural increase	-	-	-	0.7%	1.0%	1.0%	1.4%	1.5%	1.5%

*Provisional birth data

Table A20: Resident and visitor arrivals by years by quarters

Quarter	1999		2000		2001		2002		2003		2004		2005		2006		2007		2008	
	Res	Vis	Res	Vis	Res	Vis	Res	Vis	Res	Vis	Res	Vis	Res	Vis	Res	Vis	Res	Vis	Res	Vis
Qtr1	538	449	495	359	461	340	513	299	644	347	649	362	381	197	527	340	199	192	463	552
Qtr2	370	221	1,067	240	558	220	509	291	563	314	541	374	458	339	939	317	441	257	477	338
Qtr3	336	202	529	195	446	248	574	317	772	371	527	256	533	287	343	201	604	345		
Qtr4	755	241	954	282	1,124	332	1,217	411	856	345	815	298	759	262	802	276	878	333		
Total	1,999	1,113	3,045	1,076	2,589	1,140	2,813	1,318	2,835	1,377	2,532	1,290	2,131	1,085	2,611	1,134	2,122	1,127	940	890

Table A21: Resident and visitor arrivals by mode of transport and sex by quarters

Quarter/ Year	Air									Sea									Total								
	Residents			Visitors			Total			Residents			Visitors			Total			Residents			Visitors			Totals		
	M	F	T	M	F	T	M	F	T	M	F	T	M	F	T	M	F	T	M	F	T	M	F	T	M	F	T
Qtr1/05	195	94	289	139	54	193	334	148	482	56	36	92	2	2	4	58	38	96	251	130	381	141	56	197	392	186	578
Qtr2/05	270	122	392	236	73	309	506	195	701	46	20	66	17	12	29	63	32	95	316	142	458	253	85	338	569	227	796
Qtr3/05	300	128	428	162	58	220	462	186	648	66	39	105	40	27	67	106	66	172	366	167	533	202	85	287	568	252	820
Qtr4/05	291	148	439	111	60	171	402	208	610	192	128	320	51	39	90	243	167	410	483	276	759	162	99	261	645	375	1,020
Qtr1/06	248	107	355	144	67	211	392	174	566	99	73	172	91	38	129	190	111	301	347	180	527	235	105	340	582	285	867
Qtr2/06	407	221	628	193	69	262	600	290	890	185	126	311	32	23	55	217	149	366	592	347	939	225	92	317	817	439	1,256
Qtr3/06	210	94	304	120	59	179	330	153	483	28	11	39	13	9	22	41	20	61	238	105	343	133	68	201	371	173	544
Qtr4/06	350	191	541	156	58	214	506	249	755	145	116	261	34	28	62	179	144	323	495	307	802	190	86	276	685	393	1,078
Qtr1/07	145	54	199	158	35	193	303	89	392	-	-	-	-	-	-	-	-	-	145	54	199	158	35	193	303	89	392
Qtr2/07	310	131	441	181	77	258	491	208	699	-	-	-	1	-	1	1	-	1	310	131	441	182	77	259	492	208	700
Qtr3/07	393	155	548	229	93	322	622	248	870	44	12	56	16	10	26	60	22	82	437	167	604	245	103	348	682	270	952
Qtr4/07	427	230	657	203	76	279	630	306	936	116	105	221	31	23	54	147	128	275	543	335	878	234	99	333	777	434	1,211
Qtr1/08	236	107	343	263	120	383	579	370	463	68	52	120	120	49	169	188	172	169	304	159	463	383	169	552	767	542	632
Qtr2/08	282	134	416	214	87	301	698	348	503	40	21	61	18	19	37	101	39	80	322	155	477	232	106	338	799	387	583

Table A22: Resident arrivals by age groups and sex by quarters

Quarter/ Year	Total			Age Group																	
				0 - 14 yrs			15 - 24 yrs			25 - 34yrs			35 - 44yrs			45 - 54yrs			55+yrs		
	M	F	T	M	F	T	M	F	T	M	F	T	M	F	T	M	F	T	M	F	T
Qtr1/05	251	130	381	48	32	80	32	16	48	65	32	97	59	28	87	40	14	54	7	8	15
Qtr2/05	316	142	458	23	26	49	35	23	58	95	28	123	87	36	123	53	19	72	23	10	33
Qtr3/05	366	167	533	41	25	66	49	24	73	97	42	139	95	47	142	63	19	82	21	10	31
Qtr4/05	483	276	759	84	62	146	111	88	199	125	52	177	96	37	133	40	23	63	27	14	41
Qtr1/06	347	180	527	35	27	62	48	19	67	88	37	125	86	38	124	64	41	105	26	18	44
Qtr2/06	592	347	939	99	69	168	75	54	129	123	69	192	147	68	215	111	58	169	37	29	66
Qtr3/06	238	105	343	22	12	34	25	14	39	76	22	98	61	22	83	39	31	70	15	4	19
Qtr4/06	495	307	802	76	76	152	106	77	183	110	48	158	106	50	156	73	42	115	24	14	38
Qtr1/07	145	54	199	5	9	14	21	4	25	43	18	61	39	13	52	34	6	40	3	4	7
Qtr2/07	310	131	441	18	15	33	31	11	42	97	38	135	86	25	111	64	34	98	14	8	22
Qtr3/07	437	167	604	29	31	60	69	30	99	148	47	195	91	20	111	72	26	98	28	13	41
Qtr4/07	543	335	878	70	78	148	97	82	179	129	54	183	126	58	184	91	48	139	30	15	45
Qtr1/08	304	159	463	26	40	66	52	30	82	90	33	123	70	26	96	48	18	66	18	12	30
Qtr2/08	322	155	477	26	23	49	33	21	54	93	26	119	76	29	105	73	32	105	21	24	45

Table A23: Visitor arrivals by purpose of visit and sex by quarters

Quarter/ Year	Holiday/ Vacation			Government Official/ Conference			Friends/ Relatives			Transit/ Stopover			Private Business/ Commerce*			Other Purpose			Total		
	M	F	T	M	F	T	M	F	T	M	F	T	M	F	T	M	F	T	M	F	T
Qtr1/05	24	9	33	11	13	24	94	30	124	2	1	3				10	3	13	141	56	197
Qtr2/05	24	18	42	12	9	21	176	46	222	9	5	14				32	7	39	253	85	338
Qtr3/05	42	22	64	43	27	70	99	25	124	8	6	14				10	5	15	202	85	287
Qtr4/05	17	22	39	40	42	82	73	21	94	26	12	38				6	2	8	162	99	261
Qtr1/06	68	31	99	36	18	54	91	26	117	26	23	49				14	7	21	235	105	340
Qtr2/06	35	11	46	40	34	74	131	38	169	7	3	10				12	6	18	225	92	317
Qtr3/06	18	20	38	20	18	38	78	22	100	2	1	3				15	7	22	133	68	201
Qtr4/06	42	23	65	27	30	57	108	29	137	9	2	11				4	2	6	190	86	276
Qtr1/07	34	12	46	10	6	16	100	17	117	4	-	4				9		9	157	35	192
Qtr2/07	35	19	54	12	10	22	117	41	158	2	-	2				14	7	21	180	77	257
Qtr3/07	51	37	88	16	15	31	148	35	183	4	6	10				25	8	33	244	101	345
Qtr4/07	41	28	69	38	27	65	145	38	183	4	-	4				6	6	12	234	99	333
Qtr1/08	43	49	92	17	17	34	194	42	236	4	-	4	-	-	-	125	61	186	383	169	552
Qtr2/08	37	26	63	27	33	60	65	17	82	8	2	10	53	22	75	41	6	47	193	88	338

*New group introduced 2008

Table A24: Visitor arrivals by purpose of visit and sex by nationality - 2007

Countries	Holiday/ Vacation			Business/ Official			Friends/ Relatives			Transit/ Stopover			Other			Total		
	M	F	T	M	F	T	M	F	T	M	F	T	M	F	T	M	F	T
Australia	10	6	16	18	12	30	61	16	77	-	-	-	10	5	15	99	39	138
Fiji	5	-	5	22	12	34	125	44	169	1	-	1	6	3	9	159	59	218
Kiribati	-	1	1	4	3	7	7	2	9	-	-	-	-	-	-	11	6	17
New Zealand	5	4	9	8	10	18	59	14	73	3	-	3	2	-	2	77	28	105
Tuvalu	2	2	4	5	4	9	11	1	12	-	-	-	-	-	-	18	7	25
Other Pacific	1	1	2	7	2	9	38	12	50	-	1	1	1	2	3	47	18	65
Canada	5	1	6	2		2	3		3	-	-	-	-	-	-	10	1	11
United States	14	9	23	1	6	7	14	3	17	2	-	2	4	1	5	35	19	54
France	3	2	5	-	-	-	6	3	9	-	-	-	2	-	2	11	5	16
Germany	13	2	15	-	-	-	2	1	3	-	-	-	-	-	-	15	3	18
United Kingdom	9	4	13	-	1	1	16	4	20	1	-	1	-	-	-	26	9	35
Other Europe	6	2	8	1	-	1	7	2	9	-	-	-	-	-	-	14	4	18
China	-	-	-	1	-	1	5	1	6	-	-	-	5	-	5	11	1	12
Japan	57	44	101	-	2	2	88	8	96	4	1	5	19	4	23	168	59	227
Other Asia	7	3	10	4	3	7	37	9	46	-	-	-	2	3	5	50	18	68
Other Countries	24	15	39	3	3	6	31	11	42	3	4	7	3	3	6	64	36	100
Total	161	96	257	76	58	134	510	131	641	14	6	20	54	21	75	815	312	1,127

Table A25: Visitor arrivals by purpose of visit and sex by country of usual residence - 2007

Months	Holiday/ Vacation			Business/ Official			Friends/ Relatives			Transit/ Stopover			Other			Total			
	M	F	T	M	F	T	M	F	T	M	F	T	M	F	T	M	F	T	
Australia	12	7	19	16	14	30	47	12	59	-	-	-	8	4	12	83	37	120	
Fiji	13	3	16	27	16	43	224	67	291	1	-	1	2	12	4	16	277	91	368
New Zealand	4	3	7	10	11	21	58	12	70	4	-	4	2	-	2	78	26	104	
Kiribati	-	1	1	4	2	6	5	2	7	-	-	-	-	-	-	9	5	14	
Other Pacific	2	1	3	7	4	11	22	5	27	-	-	-	-	2	2	31	12	43	
Canada	3	1	4	1	-	1	1	1	2	-	-	-	-	-	-	5	2	7	
United States	14	8	22	1	3	4	3	2	5	2	-	2	3	1	4	23	14	37	
France	5	2	7	-	-	-	5	2	7	-	-	-	1	-	1	11	4	15	
United Kingdom	7	2	9	-	-	-	7	2	9	-	-	-	-	-	-	14	4	18	
Germany	12	1	13	-	-	-	1	-	1	-	-	-	-	-	-	13	1	14	
Other Europe	6	2	8	1	-	1	2	1	3	-	-	-	-	-	-	9	3	12	
China	1	-	1	1	-	1	4	1	5	-	-	-	5	-	5	11	1	12	
Japan	56	46	102	-	2	2	81	5	86	5	1	6	19	4	23	161	58	219	
Other Asia	5	3	8	4	2	6	30	11	41	-	-	-	2	3	5	41	19	60	
Other Countries	21	16	37	4	4	8	20	8	28	2	4	6	2	3	5	49	35	84	
Total	161	96	257	76	58	134	510	131	641	14	6	20	54	21	75	815	312	1,127	

Table A26: Visitor arrivals by months and places of stay - 2007

Place of stay	Jan	Feb	Mar	Apr	May	Jun	Jul	Aug	Sep	Oct	Nov	Dec	Total
Home	3	1	1	1	1	12	7	14	14	8	14	7	83
Friends/ Relatives	4	7	11	10	9	3	5	4	9	6	5	46	119
VKL Hotel	11	59	70	74	51	38	59	50	75	58	53	37	635
Filamona	4	6	12	30	5	9	14	15	9	10	8	8	130
Sea Breeze	-	-	1	-	1	-	1	1	-	-	-	-	4
Hide Away	-	-	-	1	-	1	-	-	1	-	1	1	5
Others	2	-	-	1	-	10	34	17	16	41	23	7	151
Total	24	73	95	117	67	73	120	101	124	123	104	106	1,127

Table A27: Visitor arrivals by months and places of stay - 2008

Places of stay	Jan	Feb	Mar	Apr	May	Jun	Total
Home	1	2	2	-	3	-	8
Friends/ Relatives	10	18	9	11	59	16	123
VKL Hotel	66	90	52	46	60	41	355
Filamona	14	36	24	19	28	4	125
Sea Breeze	-	-	-	-	-	-	-
Hide Away	1	1	1	-	2	-	5
Others	23	17	185	22	15	12	274
Total	115	164	273	98	167	73	890

Table A28: Resident and visitor departures by quarters

Quarter	2003		2004		2005		2006		2007		2008	
	Res	Vis	Res	Vis	Res	Vis	Res	Vis	Res	Vis	Res	Vis
Qtr1	999	542	796	420	783	343	532	192	594	218	770	519
Qtr2	558	362	460	430	496	350	531	226	429	235	533	374
Qtr3	481	275	529	314	273	175	446	247	740	342		
Qtr4	579	372	551	296	605	270	501	248	621	314		
Total	2,617	1,551	2,336	1,460	2,157	1,138	2,010	913	2,384	1,109	1,303	893

Table A29: Resident and visitor departures by mode of transport by quarters

Quarter/ Year	Air			Sea			Total		
	Res	Vis	Total	Res	Vis	Total	Res	Vis	Total
Qtr1/05	524	285	809	259	58	317	783	343	1,126
Qtr2/05	408	321	729	88	29	117	496	350	846
Qtr3/05	268	163	431	5	12	17	273	175	448
Qtr4/05	428	213	641	177	57	234	605	270	875
Qtr1/06	368	159	527	164	33	197	532	192	724
Qtr2/06	421	197	618	110	29	139	531	226	757
Qtr3/06	340	214	554	106	33	139	446	247	693
Qtr4/06	367	223	590	134	25	159	501	248	749
Qtr1/07	447	193	640	147	25	172	594	218	812
Qtr2/07	429	234	663	-	1	1	429	235	664
Qtr3/07	548	331	879	192	11	203	740	342	1,082
Qtr4/07	466	307	773	155	7	162	621	314	935
Qtr1/08	652	340	770	118	179	297	770	519	1,289
Qtr2/08	465	371	533	68	3	71	533	374	907

Table A30: Resident departures by quarters by purpose of travel

Purpose of Travel	2005				2006				2007			
	Qtr1	Qtr2	Qtr3	Qtr4	Qtr1	Qtr2	Qtr3	Qtr4	Qtr1	Qtr2	Qtr3	Qtr4
Tourism	1	-	-	14	1	1	6	4	3	5	8	5
Family/ Social	212	153	49	261	185	174	164	223	179	104	170	233
Commerce	17	23	13	17	12	12	5	7	3	10	23	28
Government	128	127	98	136	95	130	91	132	63	136	133	157
Transit	-	-	-	1	-	-	-	-	-	4	17	16
Education	294	31	42	11	144	39	52	18	226	24	37	2
Seafarer	86	89	45	96	62	98	80	84	74	95	118	104
Medical	6	2	-	19	11	21	7	16	13	13	11	20
Migrate	1	-	-	-	-	-	1	4	-	-	-	2
Other	38	71	26	50	22	56	40	13	33	38	223	54
Total	783	496	273	605	532	531	446	501	594	429	740	621

Table A31: Resident departures by months by purpose of travel - 2008

Purpose of Travel	Months						Total
	Jan	Feb	Mar	Apr	May	Jun	
Tourism	1				4		5
Family/ Social	118	50	24	15	87	39	333
Commerce	6	2	12	5	6	13	44
Government	16	32	29	51	47	40	215
Transit	26		5				31
Education	96	96	6	17	7	3	225
Seafarer	46	33	31	19	25	30	184
Medical	9	3	14	6	6	15	53
Migrate	2	2	1		8		13
Other	63	33	14	15	46	29	200
Total	383	251	136	128	236	169	1,303

Table A32: Resident departures by anticipated period of absence in days by quarters

Quarter/ Year	Below 8	8 - 14	15 - 30	31 - 90	91 - 180	181 - 365	Above 365	Total
Qtr1/05	35	202	113	52	-	381	-	783
Qtr2/05	82	192	31	73	-	118	-	496
Qtr3/05	24	175	8	-	-	66	-	273
Qtr4/05	386	111	19	18	10	60	1	605
Qtr1/06	195	115	28	12	1	181	-	532
Qtr2/06	249	92	44	9	10	127	-	531
Qtr3/06	223	77	18	15	18	94	1	446
Qtr4/06	269	97	16	15	3	97	4	501
Qtr1/07	85	151	21	4	13	320	-	594
Qtr2/07	123	139	41	9	12	105	-	429
Qtr3/07	106	242	216	18	28	130	-	740
Qtr4/07	81	250	139	32	2	115	2	621
Qtr1/08	104	139	52	14	64	392	5	770
Qtr2/08	88	151	32	74	56	124	8	533

Table A33: Visitor departures by period of stay in days by quarters

Quarter/ Year	Below 8	8 - 14	15 - 30	31 - 90	91 - 180	181 - 365	Above 365	Total
Qtr1/05	154	46	47	37	20	24	15	343
Qtr2/05	203	46	51	24	14	5	7	350
Qtr3/05	118	12	14	13	11	1	6	175
Qtr4/05	133	46	34	12	7	26	12	270
Qtr1/06	68	35	23	48	5	6	7	192
Qtr2/06	97	30	11	46	25	4	13	226
Qtr3/06	153	20	10	47	9	6	2	247
Qtr4/06	122	41	31	19	10	16	9	248
Qtr1/07	131	12	12	48	4	5	6	218
Qtr2/07	155	33	10	23	2	3	9	235
Qtr3/07	239	39	25	17	5	5	12	342
Qtr4/07	182	36	40	31	5	12	8	314
Qtr1/08	370	41	26	48	16	7	11	519
Qtr2/08	196	67	34	39	21	12	5	374

Table A34: Primary school enrolments by age and sex by years

2000	Age	5		6		7		8		9		10		11		12		13		14		15		Total		
	Island	F	M	F	M	F	M	F	M	F	M	F	M	F	M	F	M	F	M	F	M	F	M	F	M	T
Funafuti	45	45	66	50	57	52	61	58	65	66	51	49	25	48	40	60	18	9	-	-	-	-	428	437	811	
Nanumaga	4	2	7	8	13	4	12	8	8	10	4	3	6	8	7	6	3	-	-	-	-	64	49	124		
Nanumea	8	5	7	10	9	8	10	7	10	13	18	10	6	10	2	7	5	7	-	-	-	-	75	77	142	
Niulakita	-	-	-	-	-	1	-	2	-	1	-	-	-	-	1	-	2	-	-	-	-	-	3	4	6	
Niutao	3	7	6	11	3	3	12	10	11	10	4	8	6	14	7	15	2	9	2	3	-	-	56	90	109	
Nui	3	-	12	6	6	4	4	9	4	8	5	15	3	-	1	6	4	2	4	-	-	-	46	50	89	
Nukufetau	4	4	15	12	8	16	6	8	7	8	9	9	7	9	7	13	1	5	-	-	-	-	64	84	124	
Nukulaelae	-	2	5	3	7	5	5	7	9	9	11	7	-	-	12	7	2	3	-	-	-	-	51	43	102	
Vaitupu	8	16	13	16	20	14	7	11	16	17	18	13	12	19	9	11	6	15	-	-	-	-	109	132	210	
2001	Age	5		6		7		8		9		10		11		12		13		14		15		Total		
	Island	F	M	F	M	F	M	F	M	F	M	F	M	F	M	F	M	F	M	F	M	F	M	F	M	T
Funafuti	45	45	66	50	57	52	61	58	65	66	51	49	25	48	40	60	18	9	-	-	-	-	428	437	811	
Nanumaga	4	2	7	8	13	4	12	8	8	10	4	3	6	8	7	6	3	-	-	-	-	-	64	49	124	
Nanumea	8	5	7	10	9	8	10	7	10	13	18	10	6	10	2	7	5	7	-	-	-	-	75	77	142	
Niulakita	-	-	-	-	-	1	-	2	-	1	-	-	-	-	1	-	2	-	-	-	-	-	3	4	6	
Niutao	3	7	6	11	3	3	12	10	11	10	4	8	6	14	7	15	2	9	2	3	-	-	56	90	109	
Nui	3	-	12	6	6	4	4	9	4	8	5	15	3	-	1	6	4	2	4	-	-	-	46	50	89	
Nukufetau	4	4	15	12	8	16	6	8	7	8	9	9	7	9	7	13	1	5	-	-	-	-	64	84	124	
Nukulaelae	-	2	5	3	7	5	5	7	9	9	11	7	-	-	12	7	2	3	-	-	-	-	51	43	102	
Vaitupu	8	16	13	16	20	14	7	11	16	17	18	13	12	19	9	11	6	15	-	-	-	-	109	132	210	
2002	Age	5		6		7		8		9		10		11		12		13		14		15		Total		
	Island	F	M	F	M	F	M	F	M	F	M	F	M	F	M	F	M	F	M	F	M	F	M	F	M	T
Funafuti	45	45	66	50	57	52	61	58	65	66	51	49	25	48	40	60	18	9	-	-	-	-	428	437	811	
Nanumaga	4	2	7	8	13	4	12	8	8	10	4	3	6	8	7	6	3	-	-	-	-	-	64	49	124	
Nanumea	8	5	7	10	9	8	10	7	10	13	18	10	6	10	2	7	5	7	-	-	-	-	75	77	142	
Niulakita	-	-	-	-	-	1	-	2	-	1	-	-	-	-	1	-	2	-	-	-	-	-	3	4	6	
Niutao	3	7	6	11	3	3	12	10	11	10	4	8	6	14	7	15	2	9	2	3	-	-	56	90	109	
Nui	3	-	12	6	6	4	4	9	4	8	5	15	3	-	1	6	4	2	4	-	-	-	46	50	89	
Nukufetau	4	4	15	12	8	16	6	8	7	8	9	9	7	9	7	13	1	5	-	-	-	-	64	84	124	
Nukulaelae	-	2	5	3	7	5	5	7	9	9	11	7	-	-	12	7	2	3	-	-	-	-	51	43	102	
Vaitupu	8	16	13	16	20	14	7	11	16	17	18	13	12	19	9	11	6	15	-	-	-	-	109	132	210	
2003	Age	5		6		7		8		9		10		11		12		13		14		15		Total		
	Island	F	M	F	M	F	M	F	M	F	M	F	M	F	M	F	M	F	M	F	M	F	M	F	M	T
Funafuti	45	61	58	63	64	52	66	56	60	50	56	65	49	54	35	47	8	20	-	-	-	-	441	468	837	
Nanumaga	4	8	6	5	6	7	10	4	9	8	11	10	11	11	4	6	1	2	-	-	-	-	62	61	120	
Nanumea	2	6	12	6	12	10	7	7	13	12	12	13	9	4	10	-	3	-	-	-	-	-	69	76	136	
Niulakita	-	-	-	1	-	-	-	1	-	3	2	1	-	-	-	1	-	-	-	-	-	-	3	6	6	
Niutao	2	3	7	13	4	7	5	12	13	8	9	9	11	7	11	4	2	9	-	-	-	-	64	72	126	
Nui	7	3	11	7	7	10	5	5	5	12	2	10	9	9	2	6	3	1	1	-	-	-	52	63	97	
Nukufetau	4	5	9	6	14	10	9	19	7	9	9	6	8	11	8	10	5	3	-	-	-	-	73	79	142	
Nukulaelae	4	3	4	4	4	2	2	5	6	12	5	7	1	1	4	3	4	4	5	3	-	-	39	44	74	
Vaitupu	11	12	15	18	15	19	19	11	10	15	15	17	19	13	14	15	-	-	4	2	-	-	122	122	233	

Table A34: continued																											
Age		5		6		7		8		9		10		11		12		13		14		15		Total			
2004	Island	F	M	F	M	F	M	F	M	F	M	F	M	F	M	F	M	F	M	F	M	F	M	F	M	T	
	Funafuti	33	39	51	78	64	69	64	54	56	53	55	65	53	48	57	55	20	18	7	8	-	-	460	487	887	
	Nanumaga	6	6	5	9	6	6	9	8	11	7	10	6	8	7	6	10	5	5	-	-	-	-	66	64	126	
	Nanumea	9	6	4	10	13	7	10	14	10	9	6	13	20	19	10	7	-	-	-	-	-	-	82	85	155	
	Niulakita	-	-	1	2	-	1	-	-	-	1	1	3	2	1	-	-	-	-	-	-	-	-	4	8	8	
	Niutao	5	2	7	11	8	9	6	9	8	13	12	6	6	3	13	11	5	-	-	-	-	70	64	135		
	Nui	9	7	9	7	13	10	6	5	9	7	4	10	2	10	9	8	1	4	-	1	-	62	69	115		
	Nukufetau	11	5	6	6	6	6	14	9	9	16	5	10	7	6	10	13	4	4	1	3	-	73	78	135		
	Nukulaelae	6	4	4	2	2	5	5	6	-	-	3	6	4	10	3	7	5	4	3	3	-	35	47	64		
	Vaitupu	7	14	11	16	13	19	18	20	9	9	24	20	14	22	11	8	16	10	7	10	-	130	148	253		
Age		5		6		7		8		9		10		11		12		13		14		15		Total			
2005	Island	F	M	F	M	F	M	F	M	F	M	F	M	F	M	F	M	F	M	F	M	F	M	F	M	T	
	Funafuti	32	38	63	59	56	65	48	58	71	57	50	56	68	47	52	49	10	16	14	26	-	-	464	471	896	
	Nanumaga	7	7	7	14	4	8	6	7	3	1	14	10	3	3	11	16	3	6	3	4	-	-	61	76	115	
	Nanumea	1	11	11	8	3	5	18	14	7	12	14	8	6	8	11	11	5	2	5	6	-	-	81	85	161	
	Niulakita	1	2	1	2	-	1	-	-	-	1	1	2	1	1	-	-	-	-	-	-	-	-	4	9	7	
	Niutao	-	4	5	7	8	11	4	11	4	8	13	11	6	13	17	3	5	8	-	-	-	62	76	124		
	Nui	5	5	9	9	13	5	15	7	4	8	7	8	5	12	4	11	7	7	-	1	-	69	73	133		
	Nukufetau	4	5	11	8	5	7	7	3	15	12	9	15	8	6	10	3	2	6	3	3	-	74	68	144		
	Nukulaelae	4	5	4	1	8	3	3	6	3	2	3	7	6	12	3	5	1	1	2	-	-	37	42	70		
	Vaitupu	8	15	3	5	16	29	18	19	13	11	18	18	8	15	14	19	1	4	10	14	-	109	149	210		
Age		5		6		7		8		9		10		11		12		13		14		15		Total			
2006	Island	F	M	F	M	F	M	F	M	F	M	F	M	F	M	F	M	F	M	F	M	F	M	F	M	T	
	Funafuti	34	42	50	57	54	48	62	73	58	58	56	52	57	63	53	46	20	14	22	31	-	-	466	484	898	
	Nanumaga	3	6	7	14	13	10	3	6	8	5	9	6	9	5	8	14	2	4	1	5	-	-	63	75	123	
	Nanumea	5	9	7	13	11	13	4	12	16	6	8	11	11	6	4	11	6	8	3	3	-	-	75	92	145	
	Niulakita	1	2	1	2	-	1	-	-	-	1	1	2	1	1	-	-	-	-	-	-	-	-	4	9	7	
	Niutao	9	8	6	16	9	4	6	14	8	11	5	11	11	9	9	7	4	5	5	6	-	-	72	91	135	
	Nui	7	3	9	9	9	10	4	3	8	4	17	8	5	11	4	10	1	3	-	1	-	64	62	121		
	Nukufetau	2	9	7	7	9	8	7	7	7	2	13	14	8	14	8	8	2	8	-	5	-	63	82	124		
	Nukulaelae	2	8	6	7	6	2	4	2	1	-	8	6	4	9	4	10	1	2	-	2	-	36	48	70		
	Vaitupu	8	13	17	21	11	23	11	11	16	24	15	15	24	12	10	18	1	4	12	16	-	125	157	242		
Age		5		6		7		8		9		10		11		12		13		14		15		Total			
2007	Island	F	M	F	M	F	M	F	M	F	M	F	M	F	M	F	M	F	M	F	M	F	M	F	M	T	
	Funafuti	2	-	49	39	54	60	52	67	61	40	57	80	59	56	61	55	43	46	29	29	3	8	470	480	938	
	Nanumaga	-	-	8	11	8	7	2	8	9	14	7	5	2	10	6	3	16	17	7	1	4	2	69	78	138	
	Nanumea	-	-	4	8	9	10	6	12	12	14	8	9	20	6	7	13	12	10	9	4	2	5	89	91	178	
	Niulakita	-	-	-	1	-	1	-	2	-	-	-	-	-	2	-	2	-	-	-	-	-	-	-	-	8	-
	Niutao	-	-	8	7	13	13	9	14	7	4	13	4	7	8	7	9	10	9	4	1	5	83	78	166		
	Nui	-	-	3	2	12	13	8	7	9	9	11	5	9	5	12	10	7	15	2	9	-	-	73	75	146	
	Nukufetau	-	-	6	3	3	11	7	4	8	9	7	8	5	2	11	10	8	14	4	4	-	1	59	66	118	
	Nukulaelae	-	-	4	4	1	7	7	7	6	5	4	3	5	5	4	2	4	6	2	5	1	1	38	45	76	
	Vaitupu	8	13	17	21	11	23	11	11	16	24	15	15	24	12	10	18	1	4	12	16	-	-	125	157	242	

Table A35: Distribution of civil servants by stations and sex by ministries – 2007*

Ministry	Nanumea		Nanumaga		Niutao		Nui		Nukufetau		Vaitupu		Funafuti		Nukulaelae		Overseas		Total		
	F	M	F	M	F	M	F	M	F	M	F	M	F	M	F	M	F	M	F	M	T
Governor General's Office	-	-	-	-	-	-	-	-	-	-	-	-	4	1	-	-	-	-	4	1	5
Prime Minister's Office	-	-	-	-	-	-	-	-	-	-	-	-	25	14	-	-	3	6	29	20	49
Legal Services	-	-	-	-	-	-	-	-	-	-	-	-	6	4	-	-	-	-	6	4	10
Parliament	-	-	-	-	-	-	-	-	-	-	-	-	4	-	-	-	-	-	4	-	4
Auditor General	-	-	-	-	-	-	-	-	-	-	-	5	3	-	-	-	-	5	3	8	
Finance,Economic Planning and Industries	-	-	-	-	-	-	-	-	-	-	1	34	27	-	-	1	-	35	28	63	
Works and Energy	-	-	-	-	-	-	-	-	-	-	5	8	51	-	-	-	-	8	56	64	
Health	2	1	3	1	3	1	2	2	3	1	4	2	67	23	3	1	-	87	32	119	
Natural Resources and Lands	1	1	2	-	-	1	-	2	2	-	3	14	15	37	1	1	-	24	56	80	
Home Affairs and Rural Development	-	-	-	-	-	-	-	-	-	-	-	-	11	9	-	-	-	11	9	20	
Police, Prison Service and Immigrations	-	3	-	3	-	2	-	2	-	2	-	4	8	55	-	2	-	8	73	81	
Communications and Transport	-	-	-	-	-	-	-	-	1	-	-	-	18	77	-	-	-	18	78	96	
Education and Sport	7	3	4	1	8	2	6	-	6	1	46	41	40	10	2	-	-	119	58	177	
Total	10	8	9	5	11	6	8	6	11	5	53	67	490	575	6	4	4	6	358	418	776

*Vacant positions are excluded

Table A36: Age groups of civil servants by sex by ministries – 2007*

Ministry	Below 26 yrs		26-30		31-35		36-40		41-45		46-50		51-55		Above 55 yrs		Not Stated		Total		
	F	M	F	M	F	M	F	M	F	M	F	M	F	M	F	M	F	M	F	M	T
Office of the Governor General	-	-	1	-	-	-	-	-	1	-	1	-	1	-	-	1	-	-	-	4	1
Office of the Prime Minister	3	1	3	-	3	3	2	5	5	5	5	2	2	3	-	-	6	1	29	20	
Legal Services	1	-	1	-	1	2	2	-	-	1	1	1	-	-	-	-	-	-	6	4	
Parliament	-	-	1	-	2	-	-	-	1	-	-	-	-	-	-	-	-	-	4	-	
Office of the Auditor General	1	-	2	1	-	1	2	-	-	-	-	1	-	-	-	-	-	-	5	3	
Finance,Economic Planning and Industries	8	3	9	5	6	6	5	4	5	4	1	5	-	-	-	1	1	35	28		
Works and Energy	-	-	2	14	1	7	2	7	1	11	2	9	-	4	-	2	-	8	56		
Health	16	1	16	4	9	6	15	3	13	5	7	4	7	1	-	4	8	87	32		
Natural Resources and Lands	5	3	8	11	4	4	3	8	1	11	2	10	1	6	-	-	-	3	24	56	
Home Affairs and Rural Development	-	-	1	-	1	-	1	1	5	2	1	4	-	1	-	1	2	-	11	9	
Police, Prison Service and Immigrations	1	8	2	19	2	12	1	10	1	8	-	4	1	2	-	-	-	10	8	73	
Communications and Transport	2	7	6	9	4	18	2	19	-	9	1	7	1	5	-	1	2	3	18	78	
Education and Sport	6	-	38	14	17	9	13	10	11	8	10	6	15	4	1	-	8	7	119	58	
Total	43	23	90	77	50	68	48	67	44	64	31	53	28	26	1	6	23	34	358	418	

*Vacant positions are excluded

Table A37: Salary ranges of civil servants by sex by ministries – 2007*

Ministry	Below \$5000		\$5001 - \$8000		\$8001 - \$11000		\$11001 - \$14000		\$14001 - \$17000		\$17001 - \$20000		Above \$20000		Total		
	F	M	F	M	F	M	F	M	F	M	F	M	F	M	F	M	T
Office of the Governor General	3	-	-	-	1	-	-	-	1	-	-	-	-	-	4	1	5
Office of the Prime Minister	1	2	19	1	3	2	4	3	1	3	1	5	-	4	29	20	49
Legal Services	-	-	4	1	-	-	-	-	1	2	1	1	-	-	6	4	10
Parliament	-	-	2	-	1	-	-	-	1	-	-	-	-	-	4	0	4
Office of the Auditor General	-	-	3	1	1	-	1	-	-	-	-	1	-	1	5	3	8
Finance,Economic Planning and Industries	1	-	15	6	12	10	5	5	1	5	1	1	-	1	35	28	63
Works and Energy	1	9	4	13	2	25	-	7	-	1	-	1	1	-	8	56	64
Health	15	6	19	8	32	8	12	5	8	3	1	1	-	1	87	32	119
Natural Resources and Lands	-	12	10	17	12	13	2	9	-	4	-	-	-	1	24	56	80
Home Affairs and Rural Development	-	-	3	-	3	3	2	2	3	2	-	1	-	1	11	9	20
Police, Prison Service and Immigrations	-	5	4	43	3	17	1	5	-	2	-	-	-	1	8	73	81
Communications and Transport	-	32	12	25	5	9	-	6	-	5	1	-	-	1	18	78	96
Education and Sport	7	23	11	1	72	23	22	4	6	5	-	-	-	2	119	58	177
Total	28	89	106	116	147	110	49	47	21	32	5	11	2	13	358	418	776

*Vacant positions are excluded

Table A38: Number of civil servants by ministries

Years	2000	2001	2002	2003	2004	2005	2006	2007
Civil servants	783	804	844	884	884	892	886	886

Table A39: Seamen remittances (AU\$) by years and average number of seamen per month

	2000	2001	2002	2003	2004	2005	2006	2007	2008*
Remittance (\$)	3,944,168	3,791,741	5,423,167	3,680,490	3,366,749	3,325,415	2,587,592	2,509,020	819,385
Average Seamen/ month	355	400	392	372	354	356	344	342	344
Monthly Average (\$)	328,681	315,978	451,931	306,708	280,562	277,118	215,633	209,085	68,282

*Jan to Feb 2008

Table A40: Seamen remittances (AU\$) by month and number of seamen - 2007

	Jan	Feb	Mar	Apr	May	Jun	Jul	Aug	Sep	Oct	Nov	Dec
Remittance (\$)	217,752	220,015	235,638	224,954	198,866	192,085	206,100	200,913	208,705	193,237	191,487	219,268
Seamen	344	349	350	349	336	337	323	341	345	339	339	351
Average Remittance/ Seaman (\$)	633	630	673	645	592	570	638	589	605	570	565	625

