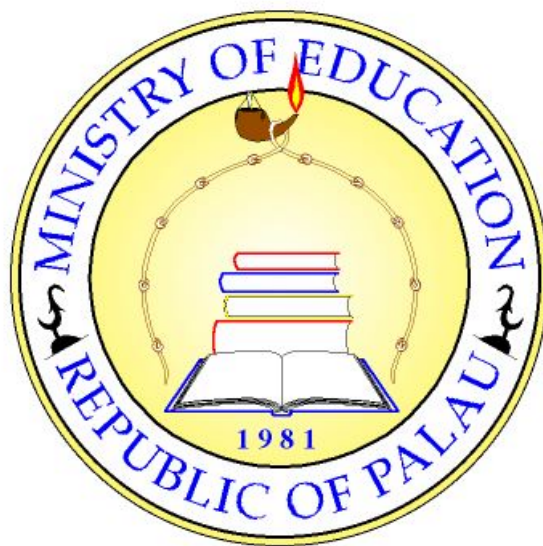


Ministry of Education

2005 Statistical Yearbook



Division of Research & Evaluation
P.O. Box 7080
Koror, Palau 96940

Published April 2006

Acknowledgements

This publication was made possible through the support of many people within the education sector. A special acknowledgement goes to the school principals for actively participating in the first Annual School Survey conducted, the Division of Personnel Management and Administrative Services Section for assistance in collection of other data within the ministry. Finally, the staff of the Division of Research and Evaluation are commended for compilation of this publication.

Introduction

The Education Statistical Yearbook 2004 is an annual publication of the Ministry of Education. It provides a range of statistical information about education in the Republic of Palau and serves as a reference for school officials and others responsible for planning and implementing activities concerning education and the development of our youth. The statistical information contained in this publication is comprised of data collected with the Annual School Survey conducted in May 2004 and data from other sources within the Ministry of Education.

This publication's layout begins with a summary of all the schools in the Republic of Palau. The following shows how the publication is organized.

- School Information
- Students' Information
- Personnel Information
- Facilities & Equipments
- Finance

Definition of Terms

Acronyms/Terms	Definition
BMS	Belau Modekngai School
Dropout	This refers to any student who leaves school for a period of 15 consecutive school days without request of a transcript or withdrawal request from parents. Students who drop out of school do not return to school within the same school year that they left school.
MOE	Ministry of Education
PHS	Palau High School
PMA	Palau Mission Academy
Repeater	This refers to any student who repeats the same grade level more than one given school year.
ROP	Republic of Palau
SDA	Seventh Day Adventist
Transfer In	This refers to any student who enters another school within MOE's school system. Students could be coming in from another school within MOE's school system, outside of MOE's school system, or another island or country.
Transfer Out	This refers to any student who exits current school within MOE's school system within a given school year.
Withdrawal	This refers to any student whose parents and/or guardian presented the school with an official document requesting that their child be withdrawn from the school for any given school year.

Table of Contents

SCHOOL INFORMATION

Table 1: List of Schools (Public & Private)	1
Figure 1: School Distribution by Region	1

STUDENT INFORMATION

Enrollment

Table 2: Elementary Enrollment by School, Grade, & Gender (Public & Private)	2
Table 3: High School Enrollment by School, Grade (Public & Private)	3
Table 4a: Elementary Enrollment by Age, Grade, & Gender (Public & Private)	4
Table 4b: High School Enrollment by Age, Grade & Gender (Public & Private)	4
Table 5: Enrollment by School Name & Gender (Public & Private)	5
Figure 2: Elementary Enrollment Distribution (Public & Private)	6
Figure 3: High School Enrollment Distribution (Public & Private)	6
Figure 4: Enrollment by Region & School Type	7

Enrollment Trend

Table 6: Enrollment Trend by School Level (Public & Private)	7
--	---

Student Ratio

Table 7: Male/Female Ratio by Grade (Public Schools)	8
Table 8: Male/Female Ratio by Grade (Private Schools)	8

Dropout

Table 9: Dropout and Percentage by Grade (Public & Private)	9
Table 10: Number of Dropout by Grade & Gender (Public & Private)	9

Withdrawal

Table 11: Withdrawals and Percentage by Grade (Public & Private)	10
Table 12: Number of Withdrawals by Grade & Gender (Public & Private)	10

Repeaters

Table 13: Repeaters and Percentage by Grade (Public & Private)	11
Figure 5: Percentage of Repeaters by Grade (Public & Private)	11
Table 14: Number of Repeaters by Grade & Gender (Public & Private)	12

Transfers

Table 15: Students Transfers by Grade (Public & Private)	12
Figure 6: Number of Student Transfers (Public & Private)	13

Graduates Trend

Table 16: Graduate and Percentage Trend by School Level	13
---	----

PERSONNEL

Table 17: School Personnel by Position & School Level (Public & Private)	14
Table 18: Teachers' Education Level by Gender (Public Schools)	14
Table 19: Teachers' Education Level by Gender (Private Schools)	15
Table 20: Teacher/Student Ratio by School Level (Public & Private)	15
Table 21: Teacher/Student Ratio by School (Public & Private)	16

Table of Contents

PERSONNEL

Table 22a-22s: Personnel Positions by School (Public Schools)	16-19
Table 23a-23g: Personnel Positions by School (Private Schools)	19-20
Table 24: Retirees Projection by Position & Year (Public Schools)	21

FACILITIES

Instructional Facilities

Table 25: Instructional Facilities by School (Public Schools)	22
Table 26: Instructional Facilities by School (Private Schools)	22

Other Facilities

Table 27: Other Facilities by School (Public Schools)	23
Table 28a-28b: Other Facilities by School (Private Schools)	23

Furniture

Table 29: Furniture by School (Public Schools)	24
Table 30: Furniture by School (Private Schools)	24

Equipment

Table 31a-31b: Equipment by School (Public Schools)	25
Table 32a-32b: Equipment by School (Private Schools)	26
Table 33: Student/Computer Ratio by School Level (Public & Private)	27
Table 34: Student/Computer Ratio by School (Public Schools)	27

FINANCE

Table 35: General Fund Budget	28
Table 36: Federal Programs Budget	28

SCHOOL INFORMATION:

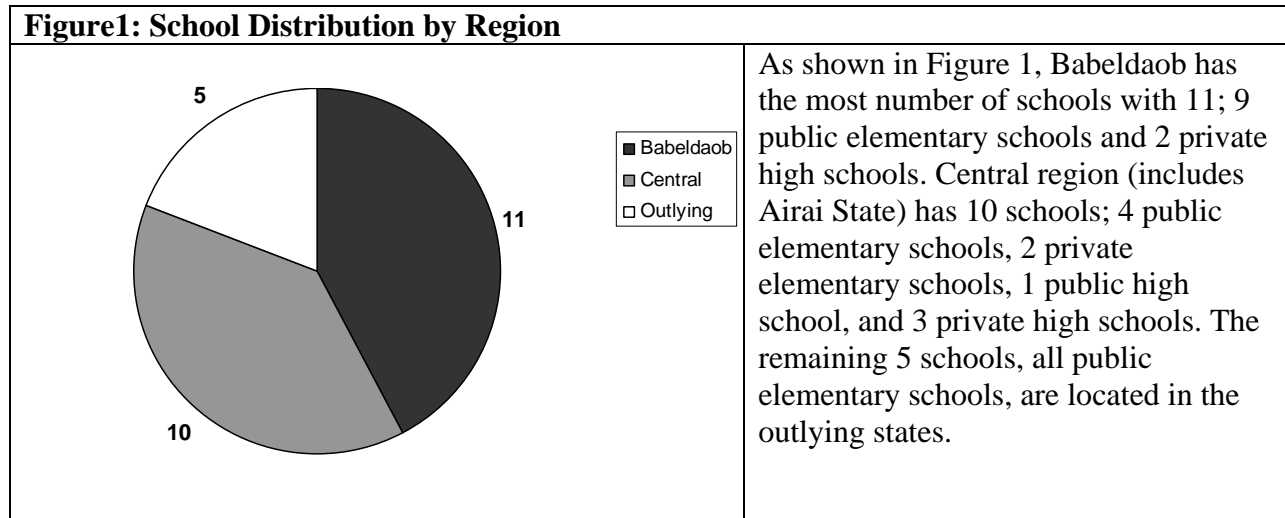
Table 1: List of Schools by School (Public & Private)

		School Name
Public	1	Aimeliik Elementary School
	2	Airai Elementary School
	3	Angaur Elementary School
	4	George B. Harris Elementary School
	5	Ibobang Elementary School
	6	JFK Elementary School
	7	Koror Elementary School
	8	Melekeok Elementary Schhol
	9	Meyuns Elementary School
	10	Ngaraard Elementary School
	11	Ngarchelong Elementary School
	12	Ngardmau Elementary School
	13	Ngchesar Elementary School
	14	Ngeremlengui Elementary School
	15	Ngiwal Elementary School
	16	Palau High School
	17	Peleliu Elementary School
	18	Pulo Ana Elementary School
	19	Sonsorol Elementary School
Private	20	Belau Modekngai School
	21	Bethania High School
	22	Emmaus High School
	23	Maris Stella Elementary School
	24	Mindszenty High School
	25	Palau Mission Academy
	26	Seventh Day Adventist Elementary School

Source: 2005 Annual School Survey

Table 1 shows the number of schools in Palau by school type and school level. There are twenty-six schools altogether. Of the total schools, nineteen are public schools while the remaining seven are private schools. The public schools include eighteen elementary schools and one high school, while private schools include two elementary schools and five high schools.

Figure 1: School Distribution by Region



As shown in Figure 1, Babeldaob has the most number of schools with 11; 9 public elementary schools and 2 private high schools. Central region (includes Airai State) has 10 schools; 4 public elementary schools, 2 private elementary schools, 1 public high school, and 3 private high schools. The remaining 5 schools, all public elementary schools, are located in the outlying states.

STUDENT INFORMATION:

➤ Enrollment

Table 2: Elementary Enrollment by School, Grade & Gender (Public & Private)

School Type	School Name	Grade Levels																Total
		1		2		3		4		5		6		7		8		
		M	F	M	F	M	F	M	F	M	F	M	F	M	F	M	F	
Public	Aimeliik	8	6	7	5	6	3	5	4	6	2	5	5	4	7	8	2	83
	Airai	11	7	16	15	8	10	16	13	13	15	17	15	8	9	25	12	210
	Angaur	5	2	4	0	0	1	1	1	1	0	3	5	6		2	0	31
	George B.Harris	39	21	42	24	28	34	42	36	45	34	43	41	30	26	30	39	554
	Ibobang	0	1	2	3	0	2	0	0	2	1	5	0	3	0	0	2	21
	JFK (Kayangel)	2		0	2	3	0	0	3	2	0	0	1	1	1	2	0	17
	Koror	34	32	26	39	45	24	37	49	35	43	49	53	44	47	55	41	653
	Melekeok	6	4	2	3	1	1	4	1	2	2	5	5	3	2	2	0	43
	Meyuns	9	11	15	14	13	14	14	13	18	17	15	17	26	7	16	21	240
	Ngaraard	6	4	4	2	4	4	3	6	4	4	5	4	6	4	4	2	66
	Ngarchelong	3	5	7	3	6	1	3	0	7	2	6	4	4	9	4	6	70
	Ngardmau	1	1	3	2	3	3	4	3	2	2	3	2	4	1	1	1	36
	Ngchesar	5	1	2	2	2	2	4	3	3	6	6	1	0	0	1	1	39
	Ngeremlengui	3	1	3	6	5	5	4	4	5	2	1	4	9	8	3	3	66
	Ngiwal	4	3	4	1	4	2	4	2	5	1	4	2	0	0	2	2	40
	Peleliu	8	4	5	4	4	7	8	3	10	4	12	11	10	7	1	10	108
	Pulo Ana	0	2	0	0	0	0	0	0	1	0	1	0	0	1	0	1	6
	Sonsorol	0	1	1	0	1	0	0	1	0	0	1	0	1	0	0	0	6
Public Total		144	106	143	125	133	113	149	142	161	135	181	170	159	129	156	143	2289
Private	Maris Stella	24	15	19	21	28	19	16	23	16	18	16	25	16	14	22	27	319
	SDA	28	13	22	22	14	15	19	17	20	17	24	18	15	14	11	13	282
Private Total		52	28	41	43	42	34	35	40	36	35	40	43	31	28	33	40	601
Gender Total		196	134	184	168	175	147	184	182	197	170	221	213	190	157	189	183	2890
Grade Total		330		352		322		366		367		434		347		372		2890

2004 Annual School Survey (End of Year Data)

Table 2 shows a total enrollment of 2,890 students of public and private elementary schools. Of the total elementary enrollment, 79.2% are enrolled in public schools. Looking at enrollment by schools, Koror has the highest enrollment of 653 students, followed by George B. Harris at 554, and Maris Stella at 319. Schools with the lowest enrollment include Pulo Ana, Sonsorol with 6 students and JFK with 17.

Table 3: High School Enrollment by School, Grade & Gender (Public & Private)

School Type	School Name	Grade Levels								School Total
		9		10		11		12		
		M	F	M	F	M	F	M	F	
Public	PHS	141	117	110	101	83	99	58	88	797
Public Total		141	117	110	101	83	99	58	88	797
Private	Bethania	0	30	0	19	0	18	0	13	80
	BMS	5	5	4	2	4	3	3	1	27
	Emmaus	23	0	3	0	10	0	15	0	51
	Mindszenty	28	33	19	35	17	26	17	26	201
	PMA	5	7	10	9	8	8	7	8	62
Private Total		61	75	36	65	39	55	42	48	421
Gender Total		202	192	146	166	122	154	100	136	1218
Grade Total		394		312		276		236		1218

2004 Annual School Survey

Table 3 shows a total enrollment of 1,218 for both public and private high schools by grade levels in school year 2004-2005. Of the total high school enrollment, 65.4% are enrolled in public schools. Looking at enrollment by schools, PHS has the highest enrollment of 797 students, followed by Mindszenty at 201. Schools with the lowest enrollment include BMS at 27 and Emmaus at 27.

Of the total enrollment of 4,108 students, public schools has higher enrollment of 75.1% compared to 24.9% for private schools. By school level enrollment, 70.4% were enrolled in the elementary schools while the remaining 29.6% were enrolled in the secondary schools.

Enrollment by grade level shows elementary schools enrollment range between 322 and 434 with grade 6 having the highest and grade 3 having the lowest. The enrollment in the high school level indicate a steady decrease as students progress through the grade levels beginning with grade 9 having the highest enrollment of 394 students and ending with grade 12 having the least enrollment of approximately 60% of grade 9 enrollment.

Table 4: Enrollment by Age, Grade, and Gender

Table 4a: Elementary Enrollment by Age, Grade and Gender (Public & Private)

Age	Grade Levels																Total	
	1		2		3		4		5		6		7		8			
	M	F	M	F	M	F	M	F	M	F	M	F	M	F	M	F		
Below 6	2	3	0	0	0	0	0	0	0	0	0	0	0	0	0	0	0	5
6	89	76	0	2	0	0	0	0	0	0	0	0	0	0	0	0	0	167
7	68	44	80	99	0	2	0	1	0	0	0	0	0	0	0	0	0	294
8	31	9	59	47	86	79	3	7	0	0	0	0	0	0	0	0	0	321
9	5	2	22	15	51	38	74	75	4	5	0	0	0	0	0	0	0	291
10	1	0	18	4	32	24	66	73	77	81	4	2	0	0	0	0	0	382
11	0	0	4	1	4	4	31	22	71	62	74	94	2	1	0	0	0	370
12	0	0	1	0	1	0	7	3	27	16	84	86	62	58	4	7	0	356
13	0	0	0	0	0	0	2	1	9	5	41	20	87	80	82	79	0	406
14	0	0	0	0	1	0	0	0	5	1	12	4	19	11	68	61	0	182
15	0	0	0	0	0	0	1	0	3	0	4	6	16	6	24	27	0	87
16	0	0	0	0	0	0	0	0	0	0	2	0	4	1	6	5	0	18
17	0	0	0	0	0	0	0	0	0	0	0	0	0	0	5	4	0	9
Over 17	0	0	0	0	0	0	0	0	1	0	0	0	0	0	0	0	0	1
Not Stated	0	0	0	0	0	0	0	0	0	0	0	1	0	0	0	0	0	1
Gender Total	196	134	184	168	175	147	184	182	197	170	221	213	190	157	189	183	0	2890
Grade Total	330		352		322		366		367		434		347		372		0	2890

Table 4b: High School Enrollment by Age, Grade and Gender (Public & Private)

Age	Grade Levels								Age Total	
	9		10		11		12			
	M	F	M	F	M	F	M	F		
13	8	10	0	1	0	0	0	0	0	19
14	43	35	5	12	0	0	0	0	0	95
15	65	80	24	26	7	3	0	0	0	205
16	45	40	48	81	18	24	1	10	0	267
17	21	13	35	35	42	65	23	18	0	252
18	12	7	18	8	28	46	30	59	0	208
19	5	4	12	2	18	10	28	39	0	118
20	2	1	4	0	7	4	14	7	0	39
21	0	0	0	0	0	1	1	1	0	3
Below 13	1	2	0	0	0	0	0	0	0	3
Over 18	0	0	0	1	2	1	2	2	0	8
Over 21	0	0	0	0	0	0	1	0	0	1
Gender Total	202	192	146	166	122	154	100	136	0	1218
Grade Total	394		312		276		236		0	1218

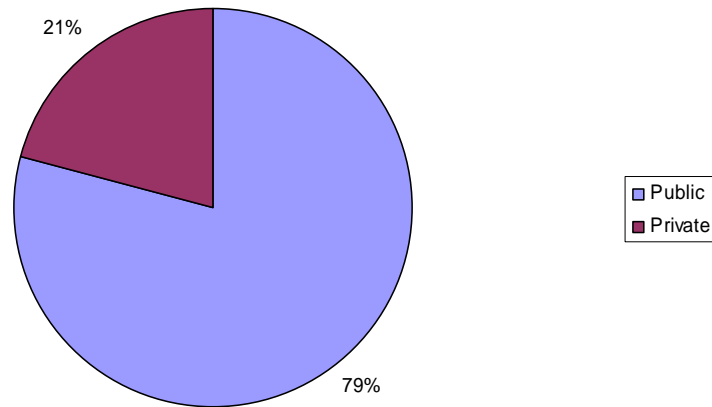
Source: 2005 Annual School Survey

Table 5: Enrollment by School and Gender (Public & Private)

School Type	School Name	M	F	Total
Public	Aimeliik	49	34	83
	Airai	114	96	210
	Angaur	22	9	31
	George B.Harris	299	255	554
	Ibobang	12	9	21
	JFK (Kayangel)	10	7	17
	Koror	325	328	653
	Melekeok	25	18	43
	Meyuns	126	114	240
	Ngaraard	36	30	66
	Ngarchelong	40	30	70
	Ngardmau	21	15	36
	Ngchesar	23	16	39
	Ngeremlengui	33	33	66
	Ngiwal	27	13	40
	Peleliu	58	50	108
	PHS	392	405	797
	Pulo Anna	2	4	6
Sonsorol	5	2	7	
Public Total		1619	1468	3087
Private	Bethania	0	80	80
	BMS	16	11	27
	Emmaus	51	0	51
	Maris Stella	157	162	319
	Mindszenty	81	120	201
	PMA	30	32	62
	SDA	153	129	282
Private Total		488	534	1022
Grand Total		2107	2002	4109

Source: 2005 Annual School Survey

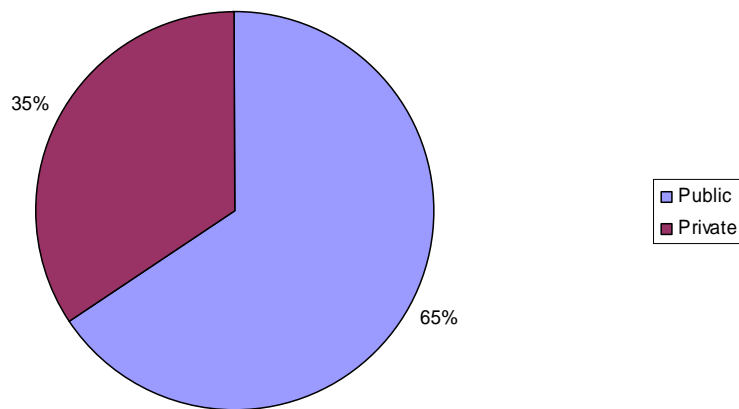
Figure 2: Elementary Schools Enrollment Distribution (Public & Private)



Source: 2005 Annual School Survey

As shown in Figure 2, one in every three students is enrolled in the private elementary schools. A higher proportion of students are enrolled in public elementary schools due to enrollment in private schools being limited only to those who can afford tuition and other school fees.

Figure 3: High Schools Enrollment Distribution (Public & Private)



Source: 2005 Annual School Survey

As shown in Figure 3, about two thirds of high school students are enrolled in public schools. Tuition and other school fees required in private schools limit enrollment to those who can afford such costs.

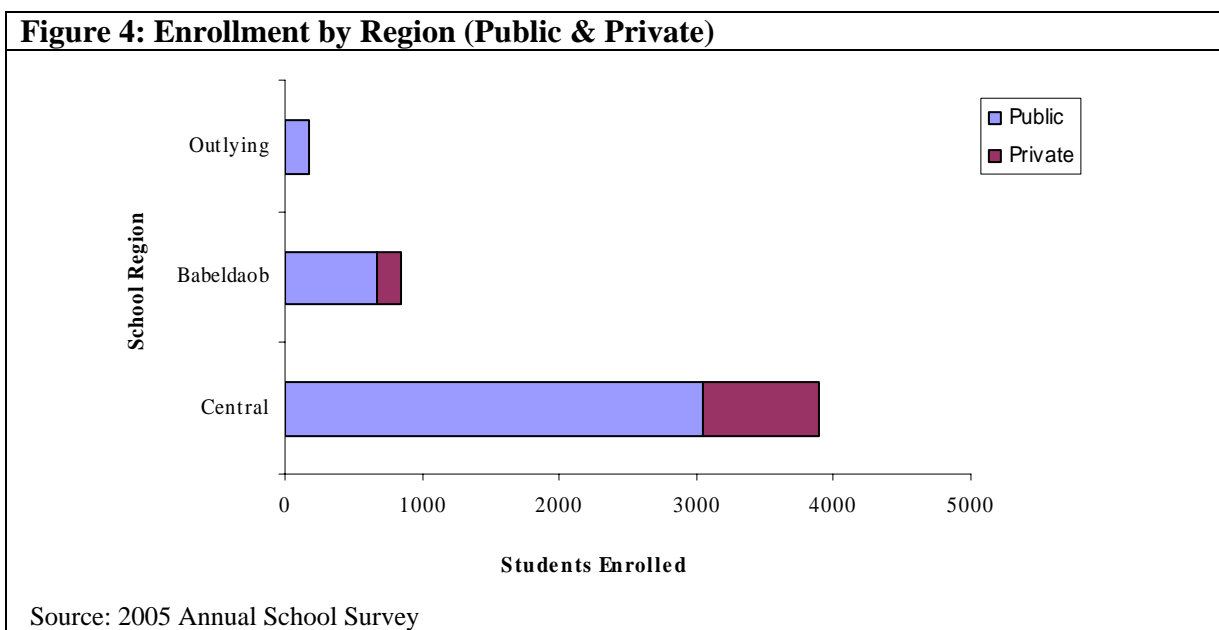


Figure 4 shows the distribution of student enrollment by region. Central region, being the most populated, has the largest number of students 3,097. Babeldaob region has 27.2% of students. Outlying states have the least number of students, all in public schools.

➤ Enrollment Trend

Table 6: Enrollment Trend by School Level & Gender (Public & Private)

School Type	School Year	Elementary			High School			Grand Total
		Male	Female	Elem. Total	Male	Female	HS Total	
Public	1997-1998	1224	1095	2319	373	350	723	3042
	1998-1999	1284	1114	2398	380	371	751	3149
	1999-2000	1259	1128	2387	368	343	711	3098
	2000-2001	1264	1150	2414	371	366	737	3151
	2001-2002	1301	1180	2481	340	356	696	3177
	2002-2003	1305	1158	2463	388	403	791	3254
	2003-2004	1272	1160	2432	408	391	799	3231
	2004-2005	1261	1121	2382	360	419	779	3161
Private	1997-1998	255	264	519	192	206	398	917
	1998-1999	289	285	574	200	212	412	986
	1999-2000	267	258	525	213	228	441	966
	2000-2001	292	293	585	217	225	442	1027
	2001-2002	314	297	611	226	246	472	1083
	2002-2003	317	332	649	221	216	437	1086
	2003-2004	326	325	651	207	215	422	1073
	2004-2005	308	304	612	178	244	422	1034

Source: Ministry of Education: Div. of Research & Evaluation

Note: Enrollment Trend data is collected at the beginning of each school year, all other data in this publication is collected in May, towards the end of the school year.

Table 6 shows enrollment trend from school years 1997-1998 to 2004-2005. There is a steady increase of enrollment except for school years 1999-2000 and 2004 – 2005. Overall, there is increase of enrollment by 6% between school years 1997-1998 and 2004-2005.

➤ Male/Female Ratio

Table 7: Male/Female Ratio by Grade (Public)

Grade	Male	Female	M/F Ratio
1	144	106	135
2	143	125	114
3	133	113	117
4	149	142	104
5	161	135	119
6	181	170	106
7	159	129	123
8	156	143	109
9	141	117	120
10	110	101	108
11	83	99	83
12	58	88	65

Table 8: Male/Female Ratio by Grade (Private)

Grade	Male	Female	M/F Ratio
1	52	28	185
2	41	43	95
3	42	34	123
4	35	40	87
5	36	35	102
6	40	43	93
7	31	28	110
8	33	40	82
9	61	75	81
10	36	65	55
11	39	55	70
12	42	48	87

Source: 2005 School Survey

Note: The **M/F Ratio column**, states that for every 100 female there are x number of males in each given grade level.

In the public schools, as shown in table 7 above, the male/female ratio in the elementary level (grades 1-8) indicate more male than female students, with grade 1 having the highest ratio of 135 and grade 4 having the lowest of 104. At the high school level (grades 9-12), grades 9 and 10 shows more male students then female but as they progress to higher grades (11 and 12) female outnumber male students. Data may indicate that more male students in the public schools are leaving high school early. For the private high schools (grades 9-12), as shown in table 8, there are also more female than male students.

➤ Drop Out

Table 9: Drop out and Percentage by Grade (Public & Private)

Grade	*Dropout			Percentage of Enrollment		
	Public	Private	Total	Public	Private	Total
1	50	2	52	10.2	1.3	8.1
2	27	0	27	6.0	0.0	4.9
3	6	3	9	1.8	3.8	2.2
4	1	0	1	0.3	0.0	0.3
5	1	0	1	0.3	0.0	0.3
6	2	3	5	0.6	3.6	1.2
7	2	0	2	0.7	0.0	0.6
8	2	0	2	0.7	0.0	0.5
9	14	1	15	5.4	0.7	3.8
10	5	2	7	2.4	2.0	2.2
11	8	0	8	4.4	0.0	2.9
12	1	0	1	0.7	0.0	0.4
Total	119	11	130	3.3	1.0	2.8

Source: 2005 Annual School Survey

Table 9 shows drop out students by grade level in both public and private schools. When comparing public and private schools, there is considerably more drop out students in public schools than private schools. As a percentage of the total student enrollment, drop out rate amounts to 2.8 percent for SY 04-05. By grade levels, the top 3 grades with highest drop out rates were grades 1, 2 and 9.

Table 10: Number of *Drop out by Grade and Gender (Public & Private)

Grade	Male	Female	Total
1	2	2	4
2	1	0	1
3	4	1	5
4	1	0	1
5	0	1	1
6	4	1	5
7	2	0	2
8	2	0	2
9	12	3	15
10	5	2	7
11	5	3	8
12	0	1	1
Total	38	14	52

Source: 2005 Annual School Survey

As shown in Table 10, more males than females are dropping out of school. Incidences increase more in the high school when comparing elementary and high school levels. Of the 52 drop out students, 59.6% of them are high schools students while the remaining 40.4%. are elementary schools students.

***Drop out** refers to all students who leave school for a period of 15 consecutive school days without request for a transcript or withdrawal request from parents.

➤ Withdrawal

Table 11: Withdrawals by Grade (Public & Private)

Grade	Withdrawal			Percentage of Enrollment		
	Public	Private	Total	Public	Private	Total
1	6	7	13	1.2	4.7	2.0
2	1	3	4	0.2	2.9	0.7
3	1	0	1	0.3	0.0	0.2
5	1	0	1	0.3	0.0	0.3
6	7	0	7	2.0	0.0	1.6
7	3	0	3	1.0	0.0	0.9
8	1	0	1	0.3	0.0	0.3
9	12	1	13	4.7	0.7	3.3
10	7	7	14	3.3	6.9	4.5
11	4	1	5	2.2	1.1	1.8
12	4	0	4	2.7	0.0	1.7
Total	47	19	66	1.4	1.8	1.5

Source: 2005 Annual School Survey

As shown in Table 11, more students in public schools withdraw from school compared to private schools. As a percentage of the total student enrollment, student withdrawals amount to 1.5%. When comparing grade level withdrawal rates for private schools, grade 10 has the highest rate of 6.9%, followed by grade 1 with 4.7%. For public schools, grade 9 has the highest of 4.7% followed by grade 10 with 3.3%.

Table 12: Number of Withdrawals by Grade and Gender (Public & Private)

Grade	M	F	Total
1	7	0	7
2	1	0	1
3	1	0	1
5	1	0	1
6	5	2	7
7	3	0	3
8	1	0	1
9	5	8	13
10	10	4	14
11	2	3	5
12	2	2	4
Total	38	19	57

Source: 2005 Annual School Survey

* **Withdrawal** refers to any student who leaves school and stays out of school for the rest of each given school year after a parent/guardian submit official withdrawal request.

As shown in Table 12, more males than females withdraw from school. When comparing grade levels, withdrawal occurs more in grades 1 and 6 for elementary and grades 9 and 10 for high school.

➤ Repeaters

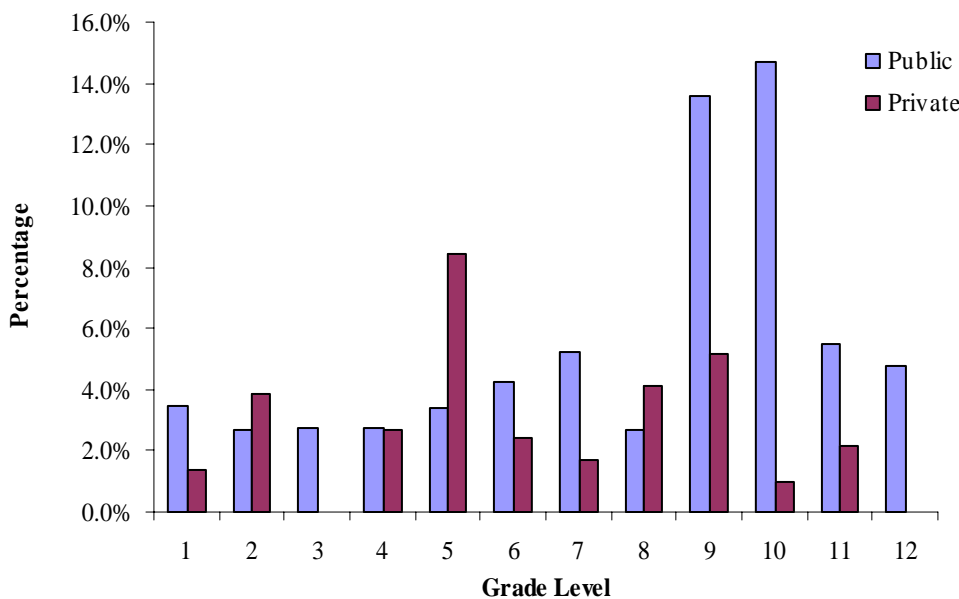
Table 13: Repeaters and Percentage by Grade (Public & Private)

Grade	*Repeaters			Enrollment		
	Public	Private	Total	Public	Private	Total
1	17	2	19	3.5	1.3	3.0
2	12	4	16	2.7	3.9	2.9
3	9	0	9	2.7	0.0	2.2
4	8	2	10	2.7	2.7	2.7
5	10	6	16	3.4	8.5	4.4
6	15	2	17	4.3	2.4	3.9
7	15	1	16	5.2	1.7	4.6
8	8	3	11	2.7	4.1	3.0
9	35	7	42	13.6	5.1	10.7
10	31	1	32	14.7	1.0	10.3
11	10	2	12	5.5	2.1	4.3
12	7		7	4.8	0.0	3.0
Total	177	30	207	4.9	2.7	4.4

Source: 2005 Annual School Survey

As indicated in Table 13, there are more students repeating grades in public schools than those in private schools. In the elementary, grade 1 had the highest number of repeaters, closely followed by grade 6. In the high school level, grade 9 has the highest number of repeaters, followed by grade 10. As a percentage of the total student enrollment, student repeaters amount to 4.4%.

Figure 5: Percentage of Repeaters by grade Level Enrollment (Public & Private)



Source: 2005 Annual School Survey

* Repeater refers to any student who at the end of a given school year repeats the same grade level for the next school year.

Table 14: Number of Repeaters by Grade and Gender (Public & Private)

Grade	Male	Female	Total
1	12	7	19
2	14	2	16
3	6	3	9
4	8	2	10
5	9	7	16
6	10	7	17
7	10	6	16
8	4	7	11
9	19	23	42
10	19	13	32
11	9	3	12
12	3	4	7
Total	123	84	207

Source: 2005 Annual School Survey

Table 14 shows the number of repeaters by gender. Of the 207 repeaters, 59.4% of them were male and the remaining 40.6% were female.

➤ Transfers

Table 15: Student Transfers by Grade (Public & Private)

Grade	Public		Private	
	In	Out	In	Out
1	7	6	18	1
2	13	6	5	0
3	17	4	4	2
4	11	4	3	3
5	3	2	5	1
6	14	1	1	0
7	8	4	1	0
8	8	3	3	0
9	15	7	6	12
10	5	7	0	7
11	6	4	5	6
12	5	2	1	0
Total	112	50	52	32

Source: 2005 Annual School Survey

As shown in Table 15, public schools experience more transfer student than private schools. It appears that students who transfer into schools are more than those who transfer out. This could mean additional students transferring into the school system from foreign schools. When comparing grade levels, the highest number of student transfer occurs in grade 9, followed by grade 1 and 3.

Figure 6: *Number of Student Transfers (Public/Private)



Source: 2005 Annual School Survey

* The large difference between **Transfers In** and **Transfers Out** could be a result of students transferring in from outside of Palau’s school system.

➤ Graduate Trend

Table 16: Graduate and Percentage Trend by School Level

School Yrs	Elementary			High School		
	8th Graders	Graduates	Percentage	12th Graders	Graduates	Percentage
1995-1996	263	256	97.3	112	104	92.9
1996-1997	232	232	100.0	90	82	91.1
1997-1998	258	263	101.9	118	103	87.3
1998-1999	275	272	98.9	130	102	78.5
1999-2000	276	276	100.0	125	113	90.4
2000-2001	285	281	98.6	152	127	83.6
2001-2002	275	266	96.7	114	102	89.5
2002-2003	261	261	100.0	128	118	92.2
2003-2004	348	319	91.7	257	235	91.4
2004-2005	372	375	100.8	236	187	79.2

Source: Div. of Research & Evaluation

* **Graduates** include both Public & Private Schools students where as previous years’ graduates only accounted for public school graduates.

** **Percentage** represents all 8th & 12th graders enrolled who graduated for each given school year.

PERSONNEL:

➤ School Personnel

Table 17: School Personnel by Position (Public & Private)

Position Categories	Public			Private			Grand Total
	Elementary	High School	Public Total	Elementary	High School	Private Total	
Teacher	202	57	259	42	48	90	349
Other Personnel	86	12	98	9	34	43	141
Principal	16	1	17	2	5	7	24
Vice Principal	2	1	3	2	2	4	7
Counselor	0	4	4	0	0	0	4
Not Stated	1	0	1	0	0	0	1
Grand Total	307	75	382	55	89	144	526

Source: 2005 Annual School Survey

As shown in Table 17, teachers make up 66.3% of the total employees in the school system. Of the 349 teachers, 74.2% of them are employed in the public schools, while the remaining 25.8% work in the private schools.

Table 18: Teachers' Education Level by Gender (Public Schools)

School Level	Highest Education	M	F	Grand Total
Elementary	Elementary	1	0	1
	High School	17	59	76
	Some college	6	21	27
	AA/AS	15	51	66
	BA/BS	8	23	31
	Not Stated	0	1	1
Elementary Total		47	155	202
High School	High School	4	1	5
	AA/AS	8	8	16
	BA/BS	8	19	27
	MA/MS	0	6	6
	Not Stated	2	1	3
High School Total		22	35	57
Grand Total		69	190	259

Source: 2005 Annual School Survey

Table 18 shows Teachers' highest education attained by gender for all public schools. Overall, female make up 73.4% of all teachers while male takes the remaining 26.6%. In the elementary schools, about 37.6% of the teachers have high school diploma, followed by 32.7% with AA/AS degree, and 15.3% with BA/BS degree. Of all the high school teachers, about 47.4% have BA/BS degree, followed by 28% with AA/AS, 10.5% with MA/MS degree, and 8.8% with high school diploma.

Table 19: Teachers' Education Level by Gender (Private Schools)

School Level	Highest Education	M	F	Total
Elementary	High School	0	4	4
	Some college	1	2	3
	AA/AS	3	2	5
	BA/BS	0	10	10
	MA/MS	0	1	1
Not Stated		6	13	19
Elementary Total		10	32	42
High School	Some college	3	2	5
	AA/AS	2	2	4
	BA/BS	14	15	29
	MA/MS	1	4	5
	PhD	1	0	1
Not Stated		4	0	4
High School Total		25	23	48
Teachers Total		35	55	90

Source: 2005 Annual School Survey

Table 19 shows Teachers' highest education attained by gender for all private schools. Of all teachers, about 61.1% have a college degree, followed by 8.9% with some college credits, and 4.4% with high school diploma. In elementary level 23.8% have BA/BS degree, followed by 11.9% with AA/AS degree, and 2.4% with MA/MS degree. In the secondary level, about 60.4% have BA/BS degree, followed by 10.4% with MA/MS, and 8.3% with AA/AS degree.

Table 20: Student/Teacher Ratio by School Level (Public & Private)

	Public			Private		
	Enrollment	Teachers	Student Teach Ratio	Enrollment	Teacher	Student Teach Ratio
Elementary	2290	202	11:1	601	42	14:1
High School	797	57	14:1	421	48	9:1
High School	3087	259	12:1	1022	90	11:1

Source: 2005 Annual School Survey

Table 20 shows teacher-student ratio. Overall, public schools have a slightly higher teacher-student ratio of one teacher to every twelve students compared to private schools with one teacher to eleven students. When comparing school levels, high school has a ratio of one teacher to fourteen students in the public school and one teacher to nine students in the private schools. In the elementary level, public schools have a ratio of one teacher to eleven students while the ratio for private elementary schools is one teacher to fourteen students.

Table 21: Student/Teacher Ratio by School (Public & Private)

School Name	Public			Private		
	Enrollment	Teachers	Student Teacher Ratio	Enrollment	Teachers	Student Teacher Ratio
Aimeliik	83	9	9:1	-	-	-
Airai	210	13	16:1	-	-	-
Angaur	31	8	4:1	-	-	-
Bethania	-	-	-	80	11	7:1
BMS	-	-	-	27	5	5:1
Emmaus	-	-	-	51	8	6:1
George B. Harris	554	28	20:1	-	-	-
Ibobang	21	5	4:1	-	-	-
JFK (Kayangel)	17	5	3:1	-	-	-
Koror	653	37	18:1	-	-	-
Maris Stella	-	-	-	319	23	14:1
Melekeok	43	8	5:1	-	-	-
Meyuns	240	17	14:1	-	-	-
Mindszenty	-	-	-	201	16	13:1
Ngaraard	66	9	7:1	-	-	-
Ngarchelong	70	11	6:1	-	-	-
Ngardmau	36	9	4:1	-	-	-
Ngchesar	39	9	4:1	-	-	-
Ngeremlengui	66	11	6:1	-	-	-
Ngiwal	40	8	5:1	-	-	-
Peleliu	108	12	9:1	-	-	-
PHS	797	57	14:1	-	-	-
PMA	-	-	-	62	8	8:1
Pulo Ana	6	2	3:1	-	-	-
SDA	-	-	-	282	19	15:1
Sonsorol	6	1	6:1	-	-	-

Source: 2005 Annual School Survey

Table 22: Personnel Positions by Gender (Public & Private)

Position	Public			Private			Grand Total
	M	F	Public Total	M	F	Private Total	
21st Centry. Staff	0	2	2	0	0	0	2
Accountant	0	0	0	1	1	2	2
Admin. Assistant	0	2	2	0	0	0	2
Asst. Teacher	0	0	0	0	2	2	2
Asst. Lib	0	0	0	1	0	1	1
Bus Driver	11	0	11	0	0	0	11
Carpenter	0	0	0	2	0	2	2
Chief Maintenance	0	0	0	1	0	1	1
Comptroller	0	0	0	0	1	1	1
Computer Lab Aid	2	2	4	0	0	0	4
Computer Lab Manager	2	5	7	1	0	1	8
Cook	5	27	32	1	6	7	39
Counselor	1	3	4	0	1	1	5
Custodian	8	0	8	0	0	0	8
Dorm Staff	0	0	0	1	3	4	4
ESL	0	0	0	0	1	1	1
Farmer	0	0	0	2	1	3	3
JICA Volunteer	0	6	6	0	0	0	6
Librarian	1	7	8	0	2	2	10
Librarian Aide	0	8	8	0	0	0	8
Maintenance	0	0	0	5	0	5	5
MRC Staff	0	2	2	0	0	0	2
Office Clerk	0	0	0	0	1	1	1
Office Manager	0	0	0	0	1	1	1
Principal	11	6	17	4	3	7	24
Secretary	0	3	3	0	6	6	9
Security	11	0	11	0	0	0	11
Store Keeper	0	0	0	0	1	1	1
Teacher	69	184	253	36	55	91	344
Utility in Charge	0	0	0	1	0	1	1
Vice Principal	1	2	3	2	1	3	6
Total	122	259	381	58	86	144	525

Source: 2005 Annual School Survey

Table 23: Personnel Positions by School & Gender (Public Schools)

Table 23a: Aimeliik Elementary			
Position	M	F	Total
Bus Driver	3	0	3
Classroom Teacher	2	7	9
Computer Lab Manager	0	1	1
Cook	1	1	2
Library Aide	0	1	1
Principal	1	0	1
School Total	7	10	17

Table 23b: Airai Elementary			
Position	M	F	Total
Bus Driver	1	0	1
Cook	0	2	2
JICA Volunteer	0	1	1
Lab Manager	0	1	1
Librarian Aide	0	1	1
Principal	1	0	1
Secretary	0	1	1
Security	1	0	1
Teacher	3	9	12
School Total	6	15	21

Table 23c: Angaur Elementary			
Position	M	F	Total
Cook	0	1	1
Librarian	0	1	1
Principal	1	0	1
Teacher	2	6	8
School Total	3	8	11

Table 23d: G. B. Harris Elementary			
Position	M	F	Total
Cook	0	6	6
Custodian	1	0	1
Lab Asst.	1	0	1
Lab Manager	0	1	1
Librarian	0	1	1
Principal	1	0	1
Secretary	0	1	1
Security	1	0	1
Teacher	7	21	28
Vice Principal	0	1	1
School Total	11	31	42

Table 23e: Ibobang Elementary			
Position	M	F	Total
Cook	0	1	1
Library Aide	0	1	1
Principal	1	0	1
Teacher	1	4	5
School Total	2	6	8

Table 23f: FJK (Kayangel) Elementary			
Position	M	F	Total
Computer Lab Aid	0	1	1
Cook	0	1	1
Librarian Aide	0	1	1
Principal	0	1	1
Teacher	3	2	5
School Total	3	6	9

Table 23g: Koror Elementary			
Position	M	F	Total
Cook	0	6	6
Custodian	1	0	1
JICA Volunteer	0	1	1
Librarian	0	1	1
MRC-1	0	1	1
MRC-2	0	1	1
Principal	0	1	1
Security	4	0	4
Teacher	5	31	36
Vice Principal	0	1	1
School Total	10	43	53

Table 23h: Melekeok Elementary			
Position	M	F	Total
21st Centry. Tutor	0	1	1
Cook	0	1	1
Custodian	1	0	1
Lab Manager	0	1	1
Library Aide	0	1	1
Principal	0	1	1
Teacher	3	5	8
School Total	4	10	14

Source: 2005 Annual School Survey

Table 23: Personnel Positions by School (Public Schools)

Table 23i: Meyuns Elementary			
Position	M	F	Total
Cook	0	3	3
Custodian	1	0	1
JICA Volunteer	0	1	1
Lab Manager	1	0	1
Librarian	0	1	1
Principal	1	0	1
Secretary	0	1	1
Security	1	0	1
Teacher	2	14	16
School Total	6	20	26

Table 23j: Ngaraard Elementary			
Position	M	F	Total
Bus Driver	2	0	2
Cook	0	1	1
Librarian	0	1	1
Principal	1	0	1
Teacher	2	7	9
School Total	5	9	14

Table 23k: Ngarchelong Elementary			
Position	M	F	Total
21st Centry. Coord.	0	1	1
Bus Driver	1	0	1
Cook	2	0	2
JICA Volunteer	0	1	1
Lab Asst.	0	1	1
Library Aide	0	1	1
Principal	1	0	1
Teacher	2	8	10
School Total	6	12	18

Table 23l: Ngardmau Elementary			
Position	M	F	Total
Cook	0	1	1
Librarian	1	0	1
Principal	1	0	1
Teacher	4	5	9
School Total	6	6	12

Table 23m: Ngchesar Elementary			
Position	M	F	Total
Bus Driver	2	0	2
Lab Asst.	1	0	1
Library Aide	0	1	1
Principal	1	0	1
Teacher	3	6	9
School Total	7	7	14

Table 23n: Ngeremlengui			
Position	M	F	Total
Bus Driver	1	0	1
Cook	1	0	1
JICA Volunteer	0	1	1
Librarian	0	1	1
Principal	0	1	1
Teacher	2	8	10

Table 23o: Ngiwal			
Position	M	F	Total
Library Aide	0	1	1
Principal	0	1	1
Teacher	5	3	8

Table 23p: Peleliu			
Position	M	F	Total
Bus Driver	1	0	1
Cook	1	1	2
JICA Volunteer	0	1	1
Lab Manager	1	0	1
Principal	0	1	1
Teacher	1	10	11

Table 23q: Pulo Anna			
Position	M	F	Total
Cook	0	1	1
Teacher	0	2	2

Table 23r: Sonsorol			
Position	M	F	Total
Cook	0	1	1
Teacher	0	1	1

Source: 2005 Annual School Survey

Table 23: Personnel Positions by School (Public Schools)

Table 23s: Palau High School			
Position	M	F	Total
Admin.Assistant	0	2	2
Counselor	1	3	4
Custodian	4	0	4
Lab Manager	0	1	1
Librarian	0	1	1
Principal	1	0	1
Security	4	0	4
Teacher	22	35	57
Vice Principal	1	0	1

Source: 2004 Annual School Survey

Table 24: Personnel Positions by School (Private Schools)

Table 24a: Belau Modekngai High School			
Position	M	F	Total
Cook	0	1	1
Principal	0	1	1
Secretary	0	1	1
Teacher	4	2	6

Table 24: Personnel Positions by School (Private Schools)

Table 24b: Bethania High School			
Position	M	F	Total
Assistant	0	2	2
Cook	0	3	3
Dorm Asst.	0	3	3
Farmer	2	1	3
Maintenance	1	0	1
Principal	0	1	1
Secretary	0	1	1
Teacher	3	8	11
Utility in Charge	1	0	1

Table 24e: Mindszenty High School			
Position	M	F	Total
Accountant	0	1	1
Asst. Lib	1	0	1
Carpenter	2	0	2
Counselor	0	1	1
Librarian	0	1	1
Maintenance	1	0	1
Principal	0	1	1
Secretary	0	1	1
Teacher	9	7	16

Table 24c: Emmaus High School			
Position	M	F	Total
Cook	1	2	3
Dorm Father	1	0	1
Maintenance	2	0	2
Principal	1	0	1
Secretary	0	1	1
Store Keeper	0	1	1
Teacher	3	5	8

Table 24f: PMA High School			
Position	M	F	Total
Maintenance	1	0	1
Principal	1	0	1
Secretary	0	1	1
Teacher	7	1	8
Vice Principal	1	0	1

Table 24d: Maris Stella Elementary			
Position	M	F	Total
Comptroller	0	1	1
Principal	1	0	1
Secretary	0	1	1
Teacher	4	19	23
Vice Principal	0	1	1

Table 24g: SDA Elementary School			
Position	M	F	Total
Accountant	1	0	1
Computer/PE	1	0	1
ESL	0	1	1
Librarian	0	1	1
Maintenance	1	0	1
Office Clerk	0	1	1
Office Manager	0	1	1
Principal	1	0	1
Teacher	6	13	19
Vice Principal	1	0	1

➤ Retirees Projection

Table 25: Retirees Projection

Position Group	2006	2007	2008	2009	2010	2011	2012	2013	2014	2015	2016
Administrative Assistant	0	0	2	3	0	1	0	0	0	0	0
Administrative Officer	0	0	0	0	1	0	0	0	0	0	0
Administrative Specialist	0	0	0	0	0	0	1	0	0	0	0
Bus Driver	0	0	0	1	0	0	0	1	2	0	1
Clerk	0	0	0	0	0	1	0	0	0	0	0
Community Dev. Specialist I	0	0	0	0	0	0	0	0	0	1	0
Cook	3	1	0	1	2	2	4	2	1	2	1
Data Entry Clerk	0	0	0	0	0	0	2	0	0	0	0
Division Chief	0	0	1	0	0	0	0	0	0	0	1
Education Specialist	0	1	1	0	1	1	1	1	0	1	0
Facilities Maintenance	0	0	0	0	0	1	0	0	0	1	1
Graphic Artist	0	0	0	0	0	0	0	0	0	0	1
Instructional Media Technician	0	0	0	0	0	0	0	0	0	1	0
Librarian I	0	0	1	0	0	0	0	0	0	0	0
Library Aide	0	0	0	1	0	0	0	0	1	1	1
Minister of Education	0	0	0	0	1	0	0	0	0	0	0
Multimedia Lab Instructor	0	0	0	0	0	1	1	0	0	0	0
Nutritionist I	0	0	0	0	1	0	0	0	0	0	0
Part-Time Teacher	1	0	0	0	0	0	0	0	0	0	0
Procurement & Supply Specialist I	0	0	1	0	0	0	0	0	0	0	0
Program Coordinator	0	0	0	0	0	0	1	0	1	0	0
Program Manager	0	0	0	0	0	0	0	0	1	0	0
School Counselor I	0	0	0	1	0	0	0	0	0	0	0
School Principal	1	3	0	0	0	1	0	1	1	0	1
Teacher	1	5	6	6	4	6	4	9	13	10	10
Testing Specialist	0	0	0	0	0	0	1	0	0	0	0
Vice Principal	0	0	1	1	0	0	0	0	0	0	0
Security Officer	0	0	1	0	1	0	1	0	0	0	1
Grand Total	6	10	14	14	11	14	16	14	20	17	18

Note: The projections of the number of employees retiring are based on retirement by age 60 or 30 years service.

FACILITIES:

➤ Instructional Facilities

Table 26: Instructional Facilities by School (Public Schools)

School Name	Enrollment	Regular Classroom	Computer Lab	SpEd Classroom	Library	Music Room
Aimeliik	83	8	1	1	1	0
Airai	210	10	1	1	1	0
Angaur	31	7	1	1	1	0
GB Harris	554	24	2	1	1	0
Ibobang	21	4	1	1	1	0
JFK	17	4	1	1	0	0
Koror	653	30	2	1	1	0
Melekeok	43	8	1	1	1	0
Meyuns	240	11	1	1	1	0
Ngaraard	66	8	1	1	1	0
Ngarchelong	70	8	1	1	1	0
Ngardmau	36	8	1	1	1	0
Ngchesar	39	0	1	1	1	0
Ngeremlengui	66	8	1	1	1	0
Ngiwal	40	6	1	1	1	0
Peleliu	108	8	1	1	1	1
PHS	797	10	3	1	0	0
Pulo Anna	6	1	0	0	1	0
Sonsorol	7	1	0	0	0	0

Source: 2005 Annual School Survey

Table 27: Instructional Facilities by School (Private Schools)

School Name	Enrollment	Reg. Class	Computer Lab	Library	ESL	SpEd Class	Music Room	Science Lab	VocEd. Class
Bethania	80	5	1	1	0	0	0	0	0
BMS	27	6	1	1	0	0	0	0	1
Emmaus	51	4	1	1	0	0	0	0	0
Maris Stella	319	16	1	1	0	1	1	0	0
Mindszenty	201	8	1	1	0	0	0	0	0
PMA	62	0	1	1	0	0	0	1	0
SDA	282	17	1	1	1	0	0	0	0

Source: 2005 Annual School Survey

➤ Other Facilities

Table 28: Other Facilities by School (Public Schools)

School Name	Enrollment	Flush Toilet	Uriners	Office	Cafeteria	Store Room	Teacher Office	Health Clinic	Other	Outhouse
Aimeliik	83	2	0	1	1	0	0	0	0	0
Airai	210	9	0	2	1	0	1	0	0	0
Angaur	31	0	0	1	1	1	0	0	0	0
GB Harris	554	6	0	1	1	0	0	1	0	0
Ibobang	21	2	0	1	1	1	0	0	0	0
JFK	17	0	0	1	1	2	0	0	0	1
Koror	653	4	0	1	1	0	0	0	0	0
Melekeok	43	5	0	1	1	1	0	0	0	0
Meyuns	240	1	0	1	1	1	0	0	0	0
Ngaraard	66	2	0	0	1	1	1	0	1	0
Ngarchelong	70	0	0	1	1	1	1	0	0	0
Ngardmau	36	2	0	1	1	1	0	0	0	0
Ngchesar	39	2	0	1	1	1	0	0	0	0
Ngeremlengui	66	2	0	1	1	1	0	0	0	0
Ngiwal	40	1	0	1	1	1	1	0	0	0
Peleliu	108	8	0	1	1	0	0	1	0	0
PHS	797	36	20	1	0	1	7	1	0	0
Pulo Anna	6	0	0	0	0	1	0	0	0	0
Sonsorol	7	0	0	0	0	1	0	0	0	0

Table 29: Other Facilities by School (Private Schools)

Table 29a: Other Facilities (Part 1)

School Name	Enrollment	Flush Toilet	Office	Store Room	Teacher Office	Dormitories	Cafeteria	Staff Housing
Bethania	80	1	1	1	0	0	1	0
BMS	27	0	1	2	1	7	1	0
Emmaus	51	8	1	1	1	4	1	9
Maris Stella	319	12	2	4	2	0	0	0
Mindszenty	201	10	1	6	1	0	1	0
PMA	62	14	1	1	1	0	1	0
SDA	282	20	1	3	0	0	0	0

Table 29b: Other Facilities (Part 2)

School Name	Enrollment	Other	Auditorium	Baierabuch	ESL	Flush Toilet	Recreational Center	Teachers Housing
Bethania	80	0	0	0	0	0	0	0
BMS	27	0	0	0	0	6	1	5
Emmaus	51	1	0	0	0	0	0	0
Maris Stella	319	0	1	1	0	0	0	0
Mindszenty	201	5	0	0	0	0	0	0
PMA	62	0	0	0	0	0	0	0
SDA	282	0	0	0	1	0	0	0

Source: 2005 Annual School Survey

➤ Furniture

Table 30: Furniture by School (Public Schools)

School Name	Enrollment	StudDesk Combo	Student Desks	Student Chairs	Board	Teacher Desks	Worktables	Teacher Chairs
Aimeliik	83	0	80	8	8	8	3	8
Airai	210	201	0	0	11	18	5	9
Angaur	31	34	16	7	15	7	0	9
GB Harris	554	403	51	152	35	36	20	26
Ibobang	21	24	24	11	4	7	2	7
JFK	17	17	4	4	9	6	6	7
Koror	653	621	59	65	91	44	23	44
Melekeok	43	31	7	57	15	22	17	13
Meyuns	240	220	9	25	18	18	18	18
Ngaraard	66	75	0	0	9	14	0	14
Ngarchelong	70	25	2	20	8	9	7	3
Ngardmau	36	0	24	24	5	6	6	4
Ngchesar	39	35	0	50	11	10	8	9
Ngeremlengui	66	58	0	25	12	10	11	11
Ngiwal	40	0	0	40	6	6	4	6
Peleliu	108	0	0	0	19	0	11	11
PHS	797	120	704	334	47	61	110	24
Pulo-Anna	6	0	7	0	2	2	1	2
Sonsorol	7	12	4	4	4	2	1	2

Source: 2005 Annual School Survey

Table 31: Furniture by School (Private Schools)

School Name	Enrollment	Student Chairs	StudDesk Combo	Student Desks	Teacher Chairs	Teacher Desks	Board	Worktables
Bethania	80	100	6	100	6	6	1	0
BMS	27	0	55	0	10	10	6	2
Emmaus	51	0	60	0	4	0	5	0
Mindszenty	201	11	203	0	20	20	15	6
PMA	62	9	110	0	6	6	9	9
SDA	282	381	46	250	20	19	18	24

Source: 2005 Annual School Survey

➤ Equipment

Table 32: Equipment by School (Public Schools)

School Name	Enrollment	Computers	TV	Laser Disc Players	Printers	Tape Recorder	Xerox	Overhead Projector
Aimeliik	83	13	1	2	1	0	1	1
Airai	210	22	9	4	2	0	2	1
Angaur	31	14	1	0	1	1	1	1
GB Harris	554	51	1	8	5	5	1	
Ibobang	21	8	3	3	2	1	1	1
JFK	17	15	0	0	2	0	2	1
Koror	653	57	22	22	7	2	3	1
Melekeok	43	17	4	1	4	1	1	1
Meyuns	240	20	3	3	3	2	2	2
Ngaraard	66	13	0	0	2	0	0	0
Ngarchelong	70	12	1	0	3	1	1	1
Ngardmau	36	12	0	1	2	0	1	1
Ngchesar	39	11	1	2	2	1	1	1
Ngeremlengui	66	14	5	4	2	3	1	1
Ngiwal	40	9	1	1	3	4	2	1
Peleliu	108	24	10	6	3	6	4	1
PHS	797	0	21	4	9	1	3	6
Pulo-Anna	6	1	0	0		1	0	0
Sonsorol	7	0	0	0	2	1	1	0

Source: 2005 Annual School Survey

School Name	Enrollment	Video Player	Camera	Video Camera	PA System	Infocus Projector
Aimeliik	83	0	1	1	1	
Airai	210	1	1	1	1	1
Angaur	31	0	0	1	0	0
GB Harris	554	3	2	2	1	1
Ibobang	21	1	1	1	1	0
JFK	17	0	1	1	0	0
Koror	653	2	1	2	1	2
Melekeok	43	1	1	1	0	0
Meyuns	240	1		1	1	1
Ngaraard	66	0	0	0	0	0
Ngarchelong	70	1	1	0	1	1
Ngardmau	36	1	1	0	1	0
Ngchesar	39	1	2	1	1	0
Ngeremlengui	66	1	2	1	0	1
Ngiwal	40	1	0	1	0	0
Peleliu	108	2	1	1	1	1
PHS	797	3	1	1	1	2
Pulo-Anna	6	0	0	0	0	0
Sonsorol	7	0	0	0	0	0

Source: 2005 Annual School Survey

Table 33: Equipment by School (Private Schools)

School Name	Enrollment	Computers	Printers	Typewriters	Tape Recorder	Television	Overhead Projector	Xerox Machine
Bethania	80	19	2	0	1	1	1	2
Emmaus	51	16	5	0	1	3	1	1
Maris Stella	319	0	6	0	1	2	1	0
Mindszenty	201	32	6	25	2	1	3	2
SDA	282	23	3	0	10	3	3	0
BMS	27	7	2	0	1	3	0	1
PMA	62	16	4	0	0	0	1	1

School Name	Enrollment	Video Player	PA System	Laser Disc Players	Camera	Camera Digital	Infocus Projector	Video Camera
Bethania	80	1	1	0	1	0	0	0
Emmaus	51	2	1	0	1	0	0	0
Maris Stella	319	2	1	1	0	0	0	0
Mindszenty	201	0	1	0	0	0	0	0
SDA	282	1	0	1	1	0	1	1
BMS	27	1	1	1	0	0	0	0
PMA	62	0	0	0	0	2	1	0

Source: 2005 Annual School Survey

Table 34: Student/Computer Ratio by School Level (Public & Private)

School Level	Public			Private		
	Enrollment	Computers	Ratio	Enrollment	Computers	Ratio
Elementary	2290	313	7:1	601	23	26:1
High School	797	139	6:1	421	90	5:1
Grand Total	3087	452	7:1	1022	113	9:1

Source: 2005 Annual School Survey

Table 34 shows computer-student ratio. Overall, private schools have a slightly higher computer-student ratio of one computer to every nine students compared to public schools with one computer to seven students. When comparing school levels, high school for both public and private schools have a ratio of one computer to five or six students. In the elementary level, public schools have a ratio of one computer to seven students while the ratio for private elementary schools is one computer to twenty-six students.

Table 35: Student/Computer Ratio by School (Public)

School Name	Enrollment	Computers	Ratio
Aimeliik	83	13	6:1
Airai	210	22	10:1
Angaur	31	14	2:1
George B.Harris	554	51	11:1
Ibobang	21	8	3:1
JFK	17	15	1:1
Koror Elem.Sch.	653	57	11:1
Melekeok	43	17	3:1
Meyuns	240	20	12:1
Ngaraard	66	13	5:1
Ngarchelong	70	12	6:1
Ngardmau	36	12	3:1
Ngchesar	39	11	4:1
Ngeremlengui	66	14	5:1
Ngiwal	40	9	4:1
Peleliu	108	24	5:1
Pulo-Anna	6	1	6:1
Sonsorol	7	0	0:1
PHS	797	139	6:1
Total	3087	452	7:1

Source: 2005 Annual School Survey

Table 35 shows computer-student ratio for all public schools. The computer-student ratio varies from school to school. For example, Angaur has the lowest ration of 1 computer to about every 2 students, whereas Meyuns has 1 computer to every 12 students.

FINANCE:

➤ General Funds

Budget Item	Amount
Office of the Minister	\$ 43,000
Bureau of School Administration	\$ 4,500,000
Bureau of Curriculum & Instruction	\$ 980,000
School Books, Supplies & Instructional Equipment	\$ 300,000
Food Services Program	\$ 565,000
Vocational Rehabilitation Office	\$ 10,000
Total	\$6,398,000

Source: 2005 Annual School Survey

Table 35 shows local funding to the Ministry of Education through annual appropriation by the national congress (Olbiil era Kelulau). Of all the budget items, Bureau of School Administration is allocated about 70.3% of the total appropriation. The local appropriation amount to 70.4% of annual funding available to the Ministry of Education.

➤ Federal Program Budget

Grant Name	Grant Amount
GEAR UP Project	\$262,435
Adult Education Program	\$47,831
Career Resource Network Program	\$70,000
HIV School Prevention Program	\$97,000
Robert C. Byrd Honors Scholarship Program	\$12,000
Special Education Program	\$1,011,283
Teacher Quality Enhancement State Grant	\$154,000
Territories & Freely-Associated States Educational Grant	\$629,982
Vocational Education Improvement Program	\$358,000
Close Up Foundation Program	\$2,000
Library Service & Tech Act	\$40,000
Total	\$2,684,531

Source: 2005 Annual School Survey (Census)

Table 36 shows current education programs funded by United States Federal Government Grants. The federal grants amount to 29.6% of annual funding available to the Ministry of Education.