

**Acknowledgement**

**Front Cover Photo: Maureen Goodwin**

**2. Cook Islands Map: Cook Islands Statistics Office  
Ministry of Finance and Economic Management**

**Editor: Repeta Puna, Director Policy and Planning  
Compiler: M Enetama, Statistics Officer  
Printing: Curriculum Printing Unit  
Produced: September 2003**

# CONTENTS

---

## 1. INTRODUCTION

## 2. COOK ISLANDS SCHOOLS

*Distribution of Schools*

*Map of Cook Islands Schools*

## 3. Status of Schools

*Teachers and Students by School Status*

*Student : School Ratios by Island*

## 4. Levels of School

## 5. STUDENT ENROLMENTS

*Comparison of 2003 Enrolments with 1996 and 2002*

## 6. 1990–2003 Student Enrolments by Level

## 7. Enrolments by Level and Gender

## 8. Enrolments by Grade and Gender

## 9. Enrolments by Grade, Island, Region, and School Status

*Student Repetition Rates at each Grade*

## 10. Enrolments by Grade/Form

*1990-2003 Enrolments by Grade/Form*

## 11. Enrolments by Grade, Age and Gender

## 12. TEACHERS

*Teachers by Gender, Teaching Level and Nationality*

## 13. Teacher Qualifications

## 14. Student:Teacher Ratios

## 16. Age Distribution of Teachers

*2002/2003 Teacher Comparisons*

## 17. SCHOOL BUILDINGS AND FACILITIES

*School Capacity*

*Selected Buildings*

*Selected Apparatus in all Schools*

*Selected Furniture in all Schools*

## 18. EDUCATION FUNDING

*2002/03 Education Budget*

*1990-2003 Education Budget Estimates*

## MINISTRY OF EDUCATION

*Education Personnel*

*Government Paid Teachers by Island*

## INTRODUCTION

Unless otherwise stated, data in this digest for 1996 to 2003 is derived from that year's Educational Management Information System (EMIS). The EMIS is a relational database that stores data on teachers and schools including enrolments, buildings and facilities. Annual survey forms are disseminated to each school in February. Each principal is responsible to ensure accurate teacher and school data, as of the 1<sup>st</sup> of March, is recorded and that the survey is promptly returned to the Ministry of Education.

### Notable Statistics in this Digest:

- ◆ Total student enrolment slightly decreased by 56(1%) since 2002.
- ◆ The total Rarotonga roll decreased by 22(0.8%) in the last 12 months.
- ◆ The overall decrease since 1996 is 17%.
- ◆ There are more female students (53%) enrolled at the senior secondary level (SL1-F7).
- ◆ There are 92(31%) teachers aged 50 years or older.

A summary of the main data for March 2003 is tabled below.

### **STUDENTS**                      *Total = 4,612*

<i>Government</i>	<i>3,843</i>	<i>Rarotonga</i>	<i>2,783</i>	<i>Pre-school</i>	<i>457</i>
<i>Church</i>	<i>596</i>	<i>Sth Group</i>	<i>1,261</i>	<i>Primary</i>	<i>2,254</i>
<i>Private</i>	<i>173</i>	<i>Nth Group</i>	<i>568</i>	<i>Secondary</i>	<i>1,901</i>
<i>Total</i>	<i>4,612</i>	<i>Total</i>	<i>4,612</i>	<i>Total</i>	<i>4,612</i>

### **TEACHERS**                      *Total = 296*

<i>Government</i>	<i>244</i>	<i>Rarotonga</i>	<i>170</i>	<i>Pre-school</i>	<i>26</i>
<i>Church</i>	<i>37</i>	<i>Sth Group</i>	<i>92</i>	<i>Primary</i>	<i>144</i>
<i>Private</i>	<i>15</i>	<i>Nth Group</i>	<i>34</i>	<i>Secondary</i>	<i>126</i>
<i>Total</i>	<i>296</i>	<i>Total</i>	<i>296</i>	<i>Total</i>	<i>296</i>

### **SCHOOLS**                      *Total = 33*

<i>Government</i>	<i>25</i>	<i>Rarotonga</i>	<i>14</i>	<i>Pre-school</i>	<i>27</i>
<i>Church</i>	<i>6</i>	<i>Sth Group</i>	<i>11</i>	<i>Primary</i>	<i>28</i>
<i>Private</i>	<i>2</i>	<i>Nth Group</i>	<i>8</i>	<i>Secondary</i>	<i>24</i>
<i>Total</i>	<i>33*</i>	<i>Total</i>	<i>33*</i>	<i>Total</i>	<i>33*</i>

\* Most of the 33 schools enrol a combination of preschool, primary or secondary students.

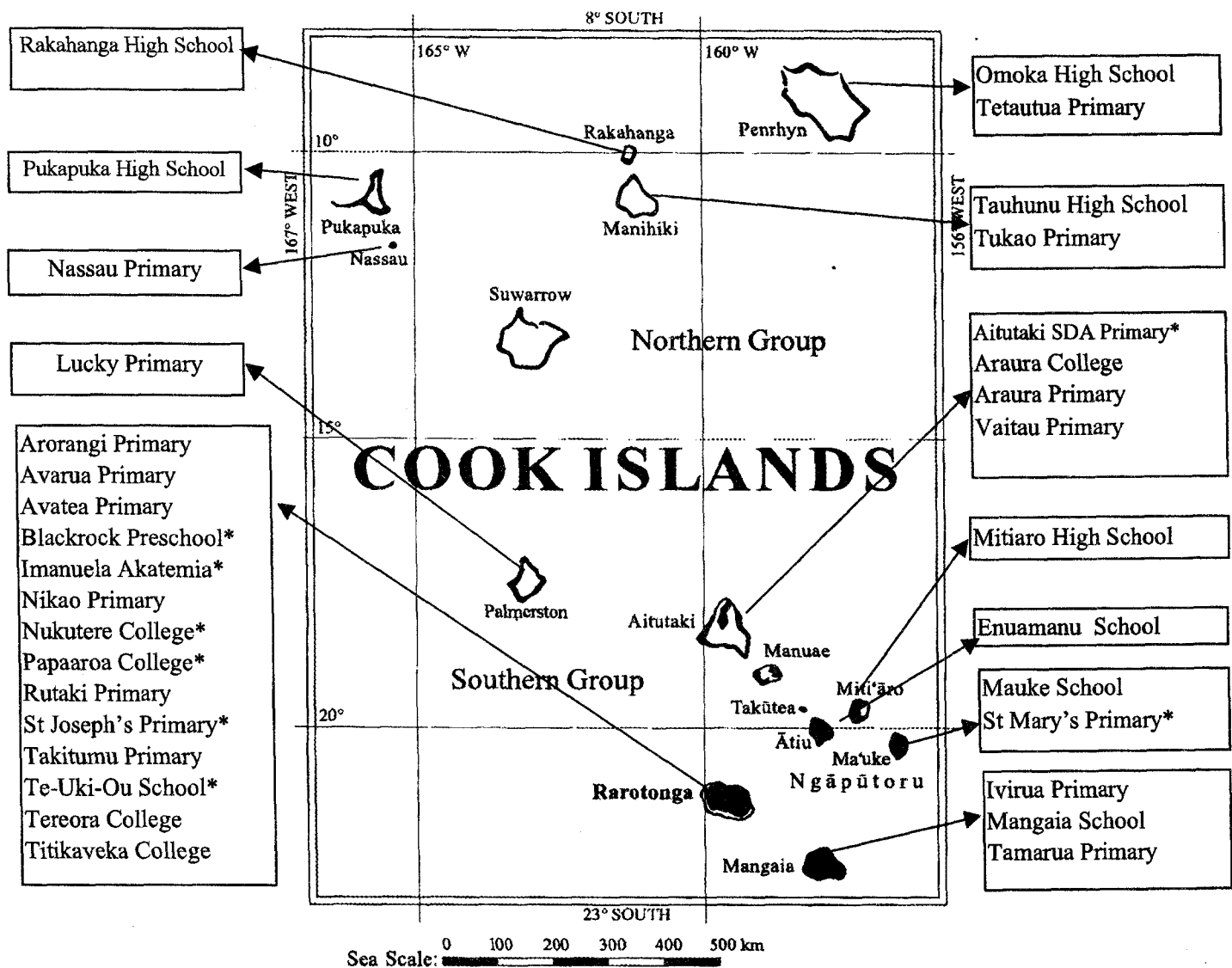
## COOK ISLANDS SCHOOLS

### DISTRIBUTION OF SCHOOLS

The Cook Islands consists of 15 islands. Rarotonga is the main island in terms of population and economic activity. The Southern Group, which excludes Rarotonga in this digest, consists of 7 islands, 2 of which (Manuae and Takutea) are not permanently populated. The least populated region is the Northern Group. The group consists of 7 islands with only Suvarrow lacking permanent population.

Schools are established on all 12 permanently populated islands. All of the 33 schools in the Cook Islands are co-educational. There are 14 schools on Rarotonga, 11 in the Southern Group and 8 in the Northern Group. The total number of schools in 2002 decreased by 1 due to the closing of Amuri School.

### MAP OF COOK ISLANDS SCHOOLS



\*Church or Private Schools

## STATUS OF SCHOOLS

The Government has established schools on all twelve permanently inhabited islands. "Private " is used to denote a non-government school neither owned nor operated by a religious organisation. The two private schools, Blackrock Preschool and Te-Uki-Ou Primary, are located on Rarotonga. There are also four Church schools on Rarotonga. Two are administered by the Catholic Church (St Joseph's and Nukutere), one by the Seventh Day Adventist Church (Papaaroa) and one by the Assembly Of God Church (Imanuela Akatemala). The Catholic Church also administers a primary school (St Mary's) on Mauke and the SDA Church administers a primary school (Aitutaki SDA) on Aitutaki.

## STATUS OF SCHOOLS BY REGION

Status	Rarotonga	Southern Grp	Northern Grp	Total
Government	8	9	8	25
Church	4	2	0	6
Private	2	0	0	2
<b>Total</b>	<b>14</b>	<b>11</b>	<b>8</b>	<b>33</b>

## TEACHERS AND STUDENTS BY SCHOOL STATUS

Status	Schools	Teachers			Students			P-T Ratio
		Male	Female	Total	Male	Female	Total	
Church	6	9	28	37	317	279	596	16
Government	25	66	178	244	1999	1844	3843	16
Private	2	1	14	15	85	88	173	12
<b>Total</b>	<b>33</b>	<b>76</b>	<b>220</b>	<b>296</b>	<b>2401</b>	<b>2211</b>	<b>4612</b>	<b>16</b>

## STUDENT : SCHOOL RATIOS BY ISLAND

Island	Schools	Students	Student/Sch
Aitutaki	4	560	140
Atiu	1	195	195
Mangaia	3	245	82
Manihiki	2	154	77
Mauke	2	174	87
Mitiaro	1	87	87
Nassau	1	28	28
Palmerston	1	23	23
Penrhyn	2	118	59
Pukapuka	1	207	207
Rakahanga	1	38	38
Rarotonga	14	2783	199
<b>Total</b>	<b>33</b>	<b>4612</b>	<b>140</b>

LEVELS OF SCHOOL

**PRE-SCHOOL** students are children aged from 3 years 6 months up to 4 years 11 months inclusive who are voluntarily enrolled for pre-school instruction.

**PRIMARY** students are children who are enrolled for instruction at Grade 1 - 6 level. Attendance is compulsory from the age of 5. The expected age range is from 5 to 10 years if a child spends one year in each grade.

**SECONDARY** students are children and young adults who are enrolled for instruction at Form 1 - 7 level. Attendance is compulsory until the end of the year in which a student turns 15 years of age.

LEVELS	RANGE	SCHOOLS	NAME OF SCHOOLS
Preschool only	PreS	1	Blackrock
Preschool & Primary only	PreS - G2	1	Tamarua
	PreS - G6	7	Takitumu, Rutaki, St Joseph's, Araura Primary, Vaitau Aitutaki SDA, Ivirua
Preschool, Primary & Secondary	PreS - F1	1	Nassau
	PreS - F2	5	Avarua, Nikao, Te-Uki-Ou, Arorangi, St Mary's
	PreS - F4	4	Lucky School, Tauhunu, Rakahanga, Tetautua
	PreS - Snr Lvl 1	4	Mitiaro, Pukapuka, Omoka, Tukao
	PreS - Snr Lvl 1	2	Imanuela Akatemija, Mauke School
	PreS - Snr Lvl 2	2	Mangaia School, Enuamanu School
Primary & Secondary only	G1 - F2	1	Avatea
	G1 - F4	1	Papaaroa College
Secondary only	F1 - Snr Lvl 1	2	Titikaveka College, Nukutere College
	F1 - Snr Lvl 2	1	Araura College
	F3 - F7	1	Tereora College

Schools with :	Rarotonga	Sth Group	Nth Group	Total
Pre-school pupils	9	10	8	27
Primary pupils	10	10	8	28
Secondary pupils	10	6	8	24

# STUDENT ENROLMENTS

## COMPARISON OF 2003 ENROLMENTS WITH 1996 AND 2002

DISTRICT	1996	1997	1998	1999	2000	2001	2002	2003	1996/2003 Change	1996/2003 % Change	2002/2003 Change	2002/2003 % Change
Aitutaki	855	763	726	710	651	642	595	560	-295	-35%	-35	-5.9%
Atiu	316	283	251	216	200	196	186	195	-121	-38%	9	4.8%
Mangaia	378	357	341	308	275	266	257	245	-133	-35%	-12	-4.7%
Manihiki	171	178	41	124	121	129	147	154	-17	-10%	7	4.8%
Mauke	249	233	239	215	202	189	177	174	-75	-30%	-3	-1.7%
Mitiaro	100	95	80	80	75	68	75	87	-13	-13%	12	16.0%
Nassau	29	30	42	38	37	38	26	28	-1	-3%	2	7.7%
Palmerston	10	3	0	12	0	9	17	23	13	130%	6	35.3%
Penrhyn	195	171	166	141	138	124	124	118	-77	-39%	-6	-4.8%
Pukapuka	268	254	251	258	264	249	219	207	-61	-23%	-12	-5.5%
Rakahanga	58	67	63	46	31	38	40	38	-20	-34%	-2	-5.0%
Rarotonga	2931	2801	2750	2619	2554	2709	2805	2783	-148	-5%	-22	-0.8%
<b>Total</b>	<b>5560</b>	<b>5235</b>	<b>4950</b>	<b>4767</b>	<b>4548</b>	<b>4657</b>	<b>4668</b>	<b>4612</b>	<b>-948</b>	<b>-17%</b>	<b>-56</b>	<b>-1.2%</b>

REGION	1996	1997	1998	1999	2000	2001	2002	2003	1996/2003 Change	1996/2003 % Change	2002/2003 Change	2002/2003 % Change
Northern Group	731	703	563	619	591	587	573	568	-163	-22%	-5	-0.9%
Rarotonga	2931	2801	2750	2619	2554	2709	2805	2783	-148	-5%	-22	-0.8%
Southern Group	1898	1731	1637	1529	1403	1361	1290	1261	-637	-34%	-29	-2.2%

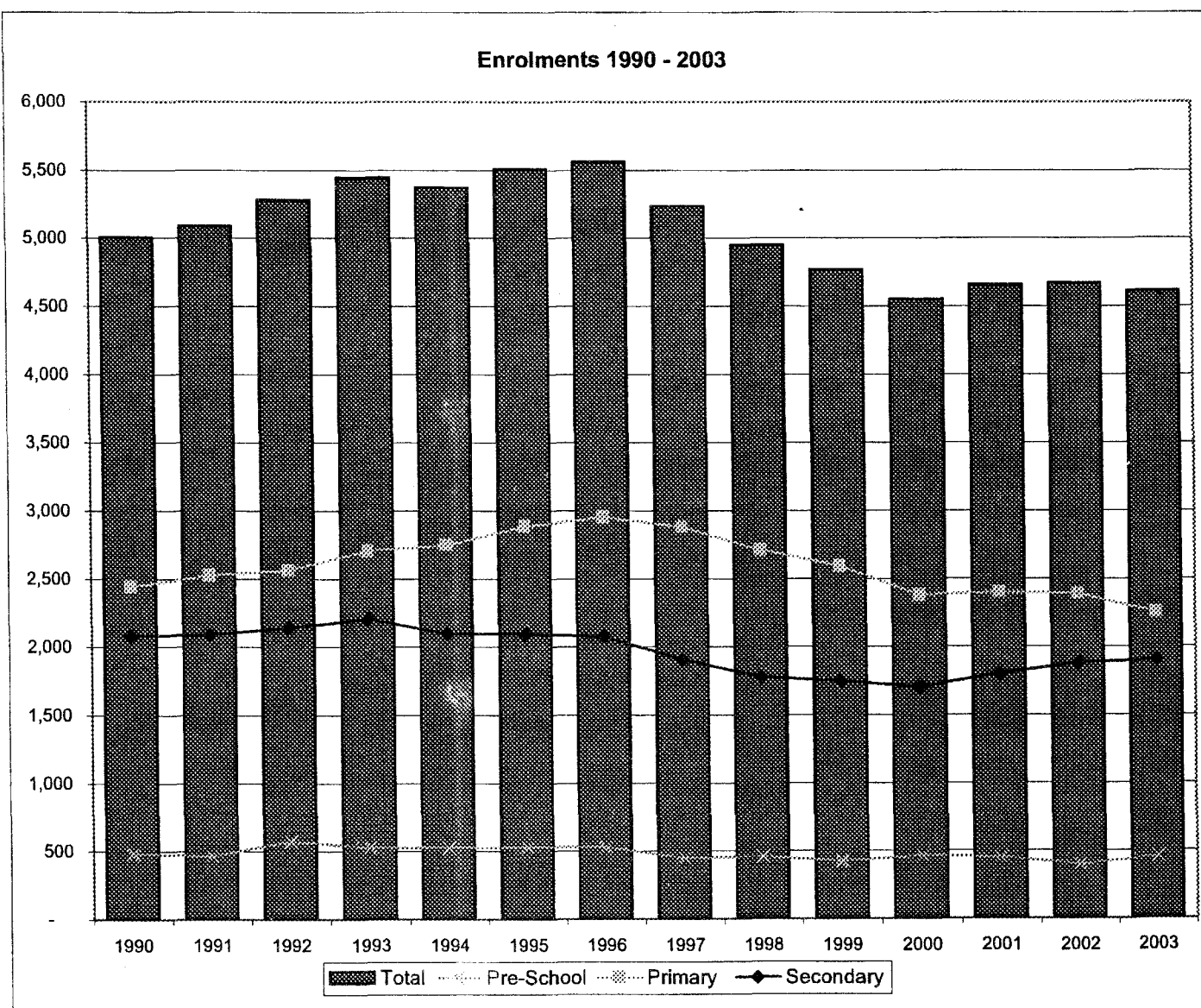
SCHOOL STATUS	1996	1997	1998	1999	2000	2001	2002	2003	1996/2003 Change	1996/2003 % Change	2002/2003 Change	2002/2003 % Change
Government	4763	4480	4219	4054	3861	3970	3970	3843	-920	-19%	-127	-3.2%
Non-government	797	755	731	713	687	687	687	769	-28	-4%	82	11.9%

# 1990-2002 ENROLMENTS BY LEVEL

Year	Pre-School	Primary	Secondary	Total
1990	480	2,442	2,082	5,004
1991	467	2,526	2,093	5,086
1992	575	2,564	2,143	5,282
1993	530	2,708	2,208	5,446
1994	527	2,750	2,094	5,371
1995	529	2,884	2,095	5,508
1996	530	2,956	2,074	5,560
1997	447	2,882	1,906	5,235
1998	460	2,711	1,779	4,950
1999	422	2,594	1,751	4,767
2000	465	2,379	1,704	4,548
2001	451	2,402	1,804	4,657
2002	399	2,388	1,881	4,668
2003	457	2,254	1,901	4,612
<b>Average</b>	<b>481</b>	<b>2,603</b>	<b>1,965</b>	<b>5,050</b>

Data for 1995 to 2002 is derived from the EMIS. Data from 1990 to 1994 is derived from the March Monthly School Returns.

Since 1996 there has been a 14% decrease in preschool rolls, a 24% decrease in primary rolls and a 8% decrease in secondary rolls. The overall decrease since 1996 is 17%.





# ENROLMENTS BY LEVEL AND GENDER

ISLAND	SCHOOL	Students				Pre-school		Primary		Secondary		Total	
		PreS	Prim	Sec	Total	Male	Female	Male	Female	Male	Female	Female	%Female
Aitutaki	Aitutaki SDA	12	46	0	58	6	6	24	22	0	0	28	48.3
	Araura College	0	0	243	243	0	0	0	0	123	120	120	49.4
	Araura Primary	12	168	0	180	3	9	86	82	0	0	91	50.6
	Vaitau Primary	15	64	0	79	9	6	31	33	0	0	39	49.4
Atiu	Enuamanu School	22	90	83	195	9	13	46	44	34	49	106	54.4
Mangaia	Ivirua Primary	6	28	0	34	3	3	14	14	0	0	17	50.0
	Mangaia School	10	82	106	198	7	3	37	45	50	56	104	53
	Tamarua Primary	3	10	0	13	2	1	4	6	0	0	7	54
Manihiki	Tauhunu High School	17	39	26	82	9	8	19	20	17	9	37	45
	Tukao Primary	12	34	26	72	7	5	20	14	11	15	34	47
Mauke	Mauke School	18	28	69	115	5	13	13	15	40	29	57	50
	St Mary's Primary	6	33	20	59	3	3	23	10	14	6	19	32
Mitiaro	Mitiaro High School	21	42	24	87	12	9	25	17	18	6	32	37
Nassau	Nassau Primary	0	23	5	28	0	0	13	10	3	2	12	43
Palmerston	Lucky School	9	12	2	23	5	4	6	6	1	1	11	48
Penryhn	Omoka High School	14	42	36	92	8	6	19	23	18	18	47	51
	Tetautua Primary	5	11	10	26	1	4	9	2	7	3	9	35
Pukapuka	Pukapuka High School	26	104	77	207	16	10	66	38	39	38	86	42
Rarotonga	Rakahanga High school	6	22	10	38	4	2	11	11	5	5	18	47
	Arorangi Primary School	19	124	33	176	6	13	66	58	17	16	87	49
	Avarua Primary	69	332	95	496	33	36	168	164	43	52	252	51
	Avatea Primary	0	311	94	405	0	0	165	146	54	40	186	46
	Blackrock Pre-school	37	0	0	37	18	19	0	0	0	0	19	51
	Imanuela Akademia School	0	42	17	59	0	0	22	20	7	10	30	51
	Nikao Primary	24	89	29	142	16	8	47	42	20	9	59	42
	Nukutere College	0	0	159	159	0	0	0	0	85	74	74	47
	Papaaroa College	0	50	25	75	0	0	28	22	13	12	34	45
	Rutaki Primary	14	29	0	43	8	6	21	8	0	0	14	33
	St Joseph's Primary	17	169	0	186	8	9	84	85	0	0	94	51
	Takitumu Primary	34	145	0	179	18	16	80	65	0	0	81	45
	Tereora College	0	0	527	527	0	0	0	0	268	259	259	49
	Te-Uki-Ou School	29	85	22	136	13	16	44	41	10	12	69	51
	Titikaveka College	0	0	163	163	0	0	0	0	84	79	79	48
	Total	457	2254	1901	4612	229	228	1191	1063	981	920	2211	48

ISLAND	Students				Pre-school		Primary		Secondary		Total	
	PreS	Prim	Sec	Total	Female	%Female	Female	%Female	Female	%Female	Female	%Female
Aitutaki	39	278	243	560	21	54	137	49	120	49	278	50
Atiu	22	90	83	195	13	59	44	49	49	59	106	54
Mangaia	19	120	106	245	7	37	65	54	56	53	128	52
Manihiki	29	73	52	154	13	45	34	47	24	46	71	46
Mauke	24	61	69	174	16	67	25	41	35	39	76	44
Mitiaro	21	42	24	87	9	43	17	40	6	25	32	37
Nassau	0	23	5	28	0	0	10	43	2	40	12	43
Palmerston	9	12	2	23	4	0	6	50	1	50	11	48
Penryhn	19	53	46	118	10	53	25	47	21	46	56	47
Pukapuka	26	104	77	207	10	38	38	37	38	49	86	42
Rakahanga	6	22	10	38	2	33	11	50	5	50	18	47
Rarotonga	243	1376	1164	2783	123	51	651	47	563	48	1337	48
Total	457	2254	1901	4612	228	50	1063	47	920	48	2211	48

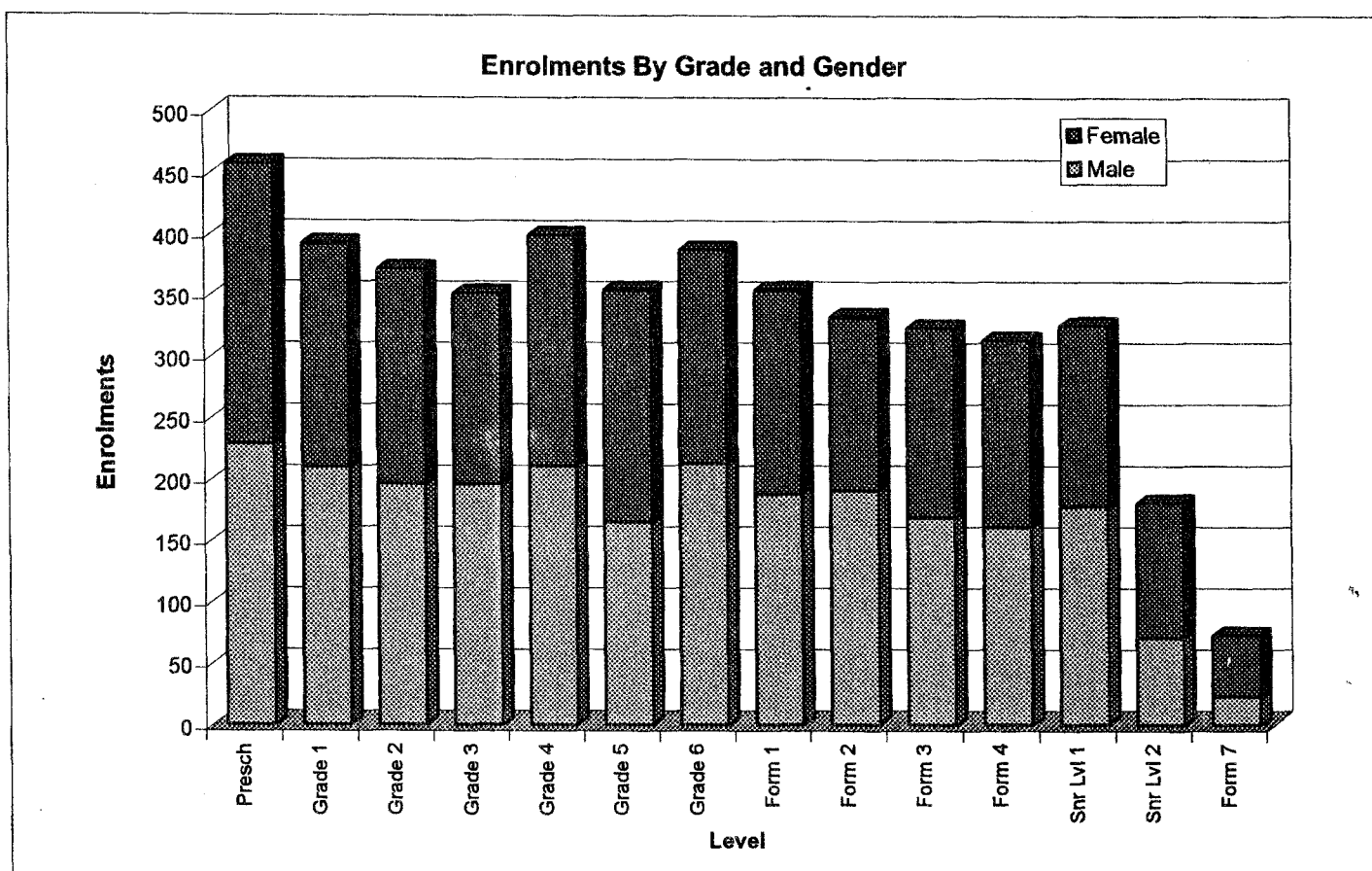
REGION	Students				Pre-school		Primary		Secondary		Total	
	PreS	Prim	Sec	Total	Female	%Female	Female	%Female	Female	%Female	Female	%Female
Northern Group	69	287	192	568	39	44	124	43	91	47	254	45
Rarotonga	243	1376	1164	2783	123	51	651	47	563	48	1337	48
Southern Group	125	591	545	1261	66	53	288	49	266	49	620	49
Total	457	2254	1901	4612	228	50	1063	47	920	48	2211	48

STATUS	Students				Pre-school		Primary		Secondary		Total	
	PreS	Prim	Sec	Total	Female	%Female	Female	%Female	Female	%Female	Female	%Female
Government	356	1829	1658	3843	186	52	862	47	791	48	1872	49
Non-government	101	425	243	769	42	42	201	47	129	53	339	44
Total	457	2254	1901	4612	228	50	1063	47	920	48	2211	48

## ENROLMENTS BY GRADE AND GENDER

Grade/Form	Male	Female	%Female	Total
Presch	229	228	50	457
Grade 1	210	182	46	392
Grade 2	196	175	47	371
Grade 3	196	155	44	351
Grade 4	211	188	47	399
Grade 5	165	189	53	354
Grade 6	213	174	45	387
Form 1	188	166	47	354
Form 2	191	141	42	332
Form 3	169	154	48	323
Form 4	161	152	49	313
Snr Lvl 1	178	147	45	325
Snr Lvl 2	71	110	61	181
Form 7	23	50	68	73
<b>Total</b>	<b>2401</b>	<b>2211</b>	<b>48</b>	<b>4612</b>

Girls make up 50% and 47% of the preschool and primary school (G1-G6) enrolment respectively. However 48% of secondary (F1-F7) students are girls who dominate at the senior secondary (SL1-F7) level accounting for 53% of the enrolment.



## ENROLMENTS BY GRADE AND ISLAND

ISLAND	Schools	G1	G2	G3	G4	G5	G6	F1	F2	F3	F4	SL1	SL2	F7	PreSch	Total
Aitutaki	4	48	38	45	43	47	57	41	49	43	37	48	25	0	39	560
Atiu	1	17	15	14	13	17	14	22	19	11	5	20	6	0	22	195
Mangaia	3	21	26	17	20	14	22	8	17	21	17	21	22	0	19	245
Manihiki	2	12	13	11	14	7	16	7	13	16	10	6	0	0	29	154
Mauke	2	6	15	10	11	9	10	13	17	10	15	34	0	0	24	174
Mitiaro	1	7	13	4	9	4	5	3	3	6	9	3	0	0	21	87
Nassau	1	3	3	4	5	4	4	5	0	0	0	0	0	0	0	28
Palmerston	1	2	0	3	3	2	2	0	1	0	1	0	0	0	9	23
Penrhyn	2	5	15	5	16	5	7	12	5	16	7	6	0	0	19	118
Pukapuka	1	20	18	15	19	18	14	18	16	13	15	15	0	0	26	207
Rakahanga	1	5	4	5	4	4	0	5	2	1	1	1	0	0	6	38
Rarotonga	14	246	211	218	242	223	236	220	190	186	196	171	128	73	243	2783
<b>Total</b>	<b>33</b>	<b>392</b>	<b>371</b>	<b>351</b>	<b>399</b>	<b>354</b>	<b>387</b>	<b>354</b>	<b>332</b>	<b>323</b>	<b>313</b>	<b>325</b>	<b>181</b>	<b>73</b>	<b>457</b>	<b>4612</b>

## ENROLMENTS BY GRADE AND REGION

REGION	Schools	G1	G2	G3	G4	G5	G6	F1	F2	F3	F4	SL1	SL2	F7	PreSch	Total
Nth Group	8	47	53	43	61	40	43	47	37	46	34	28	0	0	89	568
Rarotonga	14	246	211	218	242	223	236	220	190	186	196	171	128	73	243	2783
Sth Group	11	99	107	90	96	91	108	87	105	91	83	126	53	0	125	1261

## ENROLMENTS BY GRADE AND SCHOOL STATUS

STATUS	Schools	G1	G2	G3	G4	G5	G6	F1	F2	F3	F4	SL1	SL2	F7	PreSch	Total
Government	25	302	304	274	340	289	320	293	270	282	261	300	179	73	356	3843
Non-govt	8	90	67	77	59	65	67	61	62	41	52	25	2	0	101	769

## STUDENT REPETITION RATES AT EACH GRADE

Year	Roll	REPEATERS		OVERAGE	
		Number	%	Number	%
Pre Sch	457	-	-	0	0
Grade 1	392	57	14.5	51	13
Grade 2	371	6	1.6	62	17
Grade 3	351	2	0.6	49	14
Grade 4	399	4	1.0	56	14
Grade 5	354	6	1.7	63	18
Grade 6	387	12	3.1	61	16
Form 1	354	6	1.7	50	14
Form 2	332	3	0.9	53	16
Form 3	323	1	0.3	127	39
Form 4	313	1	0.3	127	41
SL1	325	21	6.5	33	10
SL2	181	14	7.7	60	33
Form 7	73	0	0.0	34	47
<b>Total</b>	<b>4612</b>	<b>133</b>	<b>2.9</b>	<b>826</b>	<b>18</b>

The overage data is based on the assumption that, on January 1, a Grade 1 student should be 5, a Grade 2 student should be 6 and each succeeding Grade student should be one year older. Those older than the assumed age for the grade are deemed to be overage. Compared to the year 2001 there has been an increase in overage students. Total numbers have decreased from 1020 to 826.

The number of students repeating at each level is directly recorded on each school's 2003 EMIS survey form by the school's principal. Formal entry criteria tend to apply to only Senior level 1 and higher.

**ENROLMENTS BY GRADE/FORM**

School	PreSch	Gr 1	Gr 2	Gr 3	Gr 4	Gr 5	Gr 6	F 1	F 2	F 3	F 4	SL1	SL2	F 7	Total
Blackrock Pre-school	37	0	0	0	0	0	0	0	0	0	0	0	0	0	37
Te-Uki-Ou School	29	15	13	16	16	15	10	14	8	0	0	0	0	0	136
Avarua Primary	69	36	62	57	56	57	64	56	39	0	0	0	0	0	496
Avatea Primary	0	49	39	38	68	57	60	49	45	0	0	0	0	0	405
Takitumu Primary	34	29	17	25	21	26	27	0	0	0	0	0	0	0	179
Nikao Primary	24	14	22	14	19	10	10	15	14	0	0	0	0	0	142
Rutaki Primary	14	3	7	6	5	3	5	0	0	0	0	0	0	0	43
St Joseph's Primary	17	45	22	25	27	25	25	0	0	0	0	0	0	0	186
Imanuela Akademia School	0	5	8	15	3	4	7	7	4	1	2	1	2	0	59
Arorangi Primary School	19	36	16	16	20	16	20	19	14	0	0	0	0	0	176
Tereora College	0	0	0	0	0	0	0	0	0	113	107	108	126	73	527
Titikaveka College	0	0	0	0	0	0	0	28	28	32	37	38	0	0	163
Nukutere College	0	0	0	0	0	0	0	27	32	32	44	24	0	0	159
Papaaroa College	0	14	5	6	7	10	8	5	6	8	6	0	0	0	75
Amuri Primary	0	0	0	0	0	0	0	0	0	0	0	0	0	0	0
Araura Primary	12	34	20	23	31	25	35	0	0	0	0	0	0	0	180
Vaitau Primary	15	8	8	12	9	15	12	0	0	0	0	0	0	0	79
Aitutaki SDA	12	6	10	10	3	7	10	0	0	0	0	0	0	0	58
Araura College	0	0	0	0	0	0	0	41	49	43	37	48	25	0	243
Ivirua Primary	6	6	4	5	2	4	7	0	0	0	0	0	0	0	34
Tamarua Primary	3	3	7	0	0	0	0	0	0	0	0	0	0	0	13
Mangaia School	10	12	15	12	18	10	15	8	17	21	17	21	22	0	198
Enuamanu School	22	17	15	14	13	17	14	22	19	11	5	20	6	0	195
St Mary's Primary	6	5	9	5	3	4	7	8	12	0	0	0	0	0	59
Mauke School	18	1	6	5	8	5	3	5	5	10	15	34	0	0	115
Mitiaro High School	21	7	13	4	9	4	5	3	3	6	9	3	0	0	87
Lucky Primary	9	2	0	3	3	2	2	0	1	0	1	0	0	0	23
Pukapuka High School	26	20	18	15	19	18	14	18	16	13	15	15	0	0	207
Nassau Primary	0	3	3	4	5	4	4	5	0	0	0	0	0	0	28
Tukao Primary	12	3	7	6	8	4	6	7	2	7	5	5	0	0	72
Tauhunu High School	17	9	6	5	6	3	10	0	11	9	5	1	0	0	82
Rakahanga High school	6	5	4	5	4	4	0	5	2	1	1	1	0	0	38
Tetautua Primary	5	2	3	1	4	0	1	3	1	2	4	0	0	0	26
Omoka High School	14	3	12	4	12	5	6	9	4	14	3	6	0	0	92
<b>Total</b>	<b>457</b>	<b>392</b>	<b>371</b>	<b>351</b>	<b>399</b>	<b>354</b>	<b>387</b>	<b>354</b>	<b>332</b>	<b>323</b>	<b>313</b>	<b>325</b>	<b>181</b>	<b>73</b>	<b>4612</b>

**1990 - 2002 ENROLMENTS BY GRADE/FORM**

Year	PreSch	Gr 1	Gr 2	Gr 3	Gr 4	Gr 5	Gr 6	F 1	F 2	F 3	F 4	SL1	SL2	F 7	Total
1990	480	531	373	388	377	383	390	351	392	382	323	215	72	31	5,004
1991	467	567	392	408	402	390	367	387	357	364	337	221	85	24	5,086
1992	575	649	361	387	391	395	381	385	403	352	343	207	109	29	5,282
1993	530	745	408	387	389	386	393	406	380	381	324	243	108	51	5,446
1994	527	732	485	389	366	388	390	434	331	346	346	237	91	30	5,371
1995	529	736	488	460	430	368	402	369	408	370	306	202	96	20	5,508
1996	530	757	475	488	438	422	376	365	383	365	307	235	92	32	5,560
1997	447	733	433	442	444	445	385	329	343	335	298	215	90	24	5,235
1998	460	686	416	381	414	407	407	355	304	301	284	176	93	26	4,950
1999	422	667	405	397	367	381	377	359	314	277	267	183	96	33	4,767
2000	465	514	366	406	370	353	370	365	343	274	219	178	74	35	4,548
2001	451	504	411	385	374	377	351	353	363	333	244	179	110	22	4,657
2002	399	529	337	405	363	394	360	341	352	332	298	285	126	58	4,668
2003	457	392	371	351	399	354	387	354	332	323	313	325	181	73	4,612
<b>Average</b>	<b>481</b>	<b>624</b>	<b>409</b>	<b>405</b>	<b>395</b>	<b>389</b>	<b>381</b>	<b>368</b>	<b>358</b>	<b>338</b>	<b>301</b>	<b>222</b>	<b>102</b>	<b>35</b>	<b>5,050</b>

**ENROLMENTS BY GRADE, AGE AND GENDER**

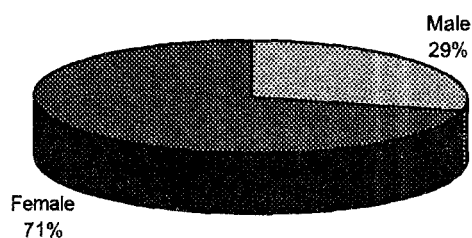
Grade/Form	Total																	Total
	4	5	6	7	8	9	10	11	12	13	14	15	16	17	18	19+		
Presch	419	38	0	0	0	0	0	0	0	0	0	0	0	0	0	0	457	
Grade 1	118	223	50	1	0	0	0	0	0	0	0	0	0	0	0	0	392	
Grade 2	0	45	264	56	6	0	0	0	0	0	0	0	0	0	0	0	371	
Grade 3	0	0	49	253	45	4	0	0	0	0	0	0	0	0	0	0	351	
Grade 4	0	0	0	43	300	55	1	0	0	0	0	0	0	0	0	0	399	
Grade 5	0	0	0	0	38	253	62	0	0	1	0	0	0	0	0	0	354	
Grade 6	0	0	0	0	1	29	296	53	8	0	0	0	0	0	0	0	387	
Form 1	0	0	0	0	0	0	44	260	45	3	2	0	0	0	0	0	354	
Form 2	0	0	0	0	0	0	2	38	239	47	6	0	0	0	0	0	332	
Form 3	0	0	0	0	0	0	0	0	31	165	121	6	0	0	0	0	323	
Form 4	0	0	0	0	0	0	0	0	1	42	143	124	3	0	0	0	313	
SL1	0	0	0	0	0	0	0	0	0	0	17	108	167	19	4	10	325	
SL2	0	0	0	0	0	0	0	0	0	0	1	3	21	96	50	10	181	
Form 7	0	0	0	0	0	0	0	0	0	0	0	0	2	5	32	34	73	
Total	537	306	363	353	390	341	405	351	324	258	290	241	193	120	86	54	4612	
Female																		
Grade/Form	4	5	6	7	8	9	10	11	12	13	14	15	16	17	18	19+	Total	
Presch	215	13	0	0	0	0	0	0	0	0	0	0	0	0	0	0	228	
Grade 1	65	95	21	1	0	0	0	0	0	0	0	0	0	0	0	0	182	
Grade 2	0	26	121	26	2	0	0	0	0	0	0	0	0	0	0	0	175	
Grade 3	0	0	29	118	8	0	0	0	0	0	0	0	0	0	0	0	155	
Grade 4	0	0	0	27	136	25	0	0	0	0	0	0	0	0	0	0	188	
Grade 5	0	0	0	0	23	139	26	0	0	1	0	0	0	0	0	0	189	
Grade 6	0	0	0	0	0	14	135	23	2	0	0	0	0	0	0	0	174	
Form 1	0	0	0	0	0	0	28	116	21	0	1	0	0	0	0	0	166	
Form 2	0	0	0	0	0	0	1	20	101	19	0	0	0	0	0	0	141	
Form 3	0	0	0	0	0	0	0	0	22	81	49	2	0	0	0	0	154	
Form 4	0	0	0	0	0	0	0	0	1	23	78	50	0	0	0	0	152	
SL1	0	0	0	0	0	0	0	0	0	0	11	53	64	10	2	7	147	
SL2	0	0	0	0	0	0	0	0	0	0	1	1	13	57	31	7	110	
Form 7	0	0	0	0	0	0	0	0	0	0	0	0	1	4	19	26	50	
Total	280	134	171	172	169	178	190	159	147	124	140	106	78	71	52	40	2211	
Male																		
Grade/Form	4	5	6	7	8	9	10	11	12	13	14	15	16	17	18	19+	Total	
Presch	204	25	0	0	0	0	0	0	0	0	0	0	0	0	0	0	229	
Grade 1	53	128	29	0	0	0	0	0	0	0	0	0	0	0	0	0	210	
Grade 2	0	19	143	30	4	0	0	0	0	0	0	0	0	0	0	0	196	
Grade 3	0	0	20	135	37	4	0	0	0	0	0	0	0	0	0	0	196	
Grade 4	0	0	0	16	164	30	1	0	0	0	0	0	0	0	0	0	211	
Grade 5	0	0	0	0	15	114	36	0	0	0	0	0	0	0	0	0	165	
Grade 6	0	0	0	0	1	15	161	30	6	0	0	0	0	0	0	0	213	
Form 1	0	0	0	0	0	0	16	144	24	3	1	0	0	0	0	0	188	
Form 2	0	0	0	0	0	0	1	18	138	28	6	0	0	0	0	0	191	
Form 3	0	0	0	0	0	0	0	0	9	84	72	4	0	0	0	0	169	
Form 4	0	0	0	0	0	0	0	0	0	19	65	74	3	0	0	0	161	
SL1	0	0	0	0	0	0	0	0	0	0	6	55	103	9	2	3	178	
SL2	0	0	0	0	0	0	0	0	0	0	0	2	8	39	19	3	71	
Form 7	0	0	0	0	0	0	0	0	0	0	0	0	1	1	13	8	23	
Total	257	172	192	181	221	163	215	192	177	134	150	135	115	49	34	14	2401	

# TEACHERS

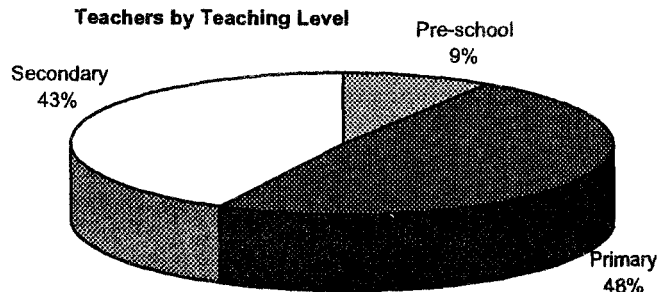
## TEACHERS BY GENDER, TEACHING LEVEL AND NATIONALITY

STATUS	Teachers			Teaching Level			Nationality	
	Total	Female	%Female	Pre-school	Primary	Secondary	Cook-Is	%CIs.
Government	244	178	73	18	115	111	218	89
Non-government	52	42	81	8	29	15	34	65
Total	296	220	74	26	144	126	252	85

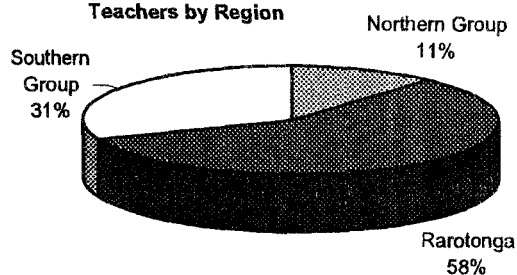
Teachers by Gender



Teachers by Teaching Level



Teachers by Region



REGION	Teachers			Teaching Level			Nationality	
	Total	Female	%Female	Pre-school	Primary	Secondary	Cook-Is	%CIs.
Northern Group	34	27	79	5	18	11	31	91
Rarotonga	170	123	72	14	82	74	136	80
Southern Group	92	70	76	7	44	41	85	92

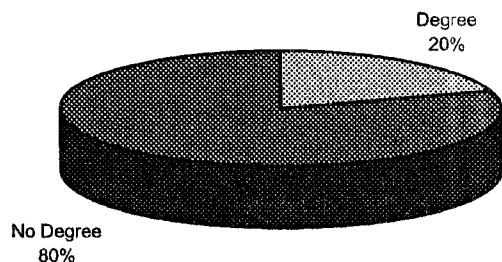
ISLAND	Teachers			Teaching Level			Nationality	
	Total	Female	%Female	Pre-school	Primary	Secondary	Cook-Is	%CIs.
Aitutaki	39	32	82	3	19	17	38	97
Atiu	13	10	77	1	6	6	11	85
Mangaia	19	13	68	2	9	8	17	89
Manihiki	9	9	100	2	4	3	9	100
Mauke	15	10	67	1	6	8	13	87
Mitiaro	6	5	83	0	4	2	6	100
Nassau	2	1	50	0	2	0	2	100
Palmerston	0	0	0	0	0	0	0	0
Penrhyn	7	6	86	1	4	2	5	71
Pukapuka	12	8	67	1	6	5	11	92
Rakahanga	4	3	75	1	2	1	4	100
Rarotonga	170	123	72	14	82	74	136	80



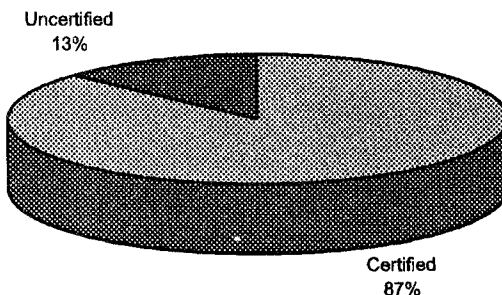
## TEACHER QUALIFICATIONS

STATUS	Total Teachers	No. of Teachers with		No. of Teachers		% Teachers (with)	
		Degree	No Degree	Certified	Uncertified	Degree	Certified
Government	244	52	192	226	18	21	93
Non-government	52	7	45	31	21	13	60
<b>Total</b>	<b>296</b>	<b>59</b>	<b>237</b>	<b>257</b>	<b>39</b>	<b>20</b>	<b>87</b>

Teachers by Academic Qualification



Teachers by Teaching Qualification



REGION	Total Teachers	No. of Teachers with		No. of Teachers		% Teachers (with)	
		Degree	No Degree	Certified	Uncertified	Degree	Certified
Northern Group	34	3	31	28	6	9	82
Rarotonga	170	42	128	149	21	25	88
Southern Group	92	14	78	80	12	15	87

ISLAND	Total Teachers	No. of Teachers with		No. of Teachers		% Teachers (with)	
		Degree	No Degree	Certified	Uncertified	Degree	Certified
Aitutaki	39	5	34	39	0	13	100
Atiu	13	2	11	12	1	15	92
Mangaia	19	3	16	18	1	16	95
Manihiki	9	1	8	7	2	11	78
Mauke	15	4	11	5	10	27	33
Mitiaro	6	0	6	6	0	0	100
Nassau	2	0	2	2	0	0	100
Palmerston	0	0	0	0	0	0	0
Penrhyn	7	0	7	5	2	0	71
Pukapuka	12	2	10	11	1	17	92
Rakahanga	4	0	4	3	1	0	75
Rarotonga	170	42	128	149	21	25	88

**Note:**

1. Certified teachers are those with a Teachers College Certificate or Diploma.
2. The number of teachers with degrees and certified to teach are as reported by Principals and are not derived from a file check of verified qualifications held by the Ministry of Education.

# STUDENT : TEACHER RATIOS

STATUS	Number of Teachers			Total Students	S : T RATIOS		
	Male	Female	Total		2003	2002	Change
Government	66	178	244	3843	15.8	16.4	-0.7
Non-government	10	42	52	769	14.8	14.5	0.3
Total	76	220	296	4612	15.6	16.1	-0.5

REGION	Number of Teachers			Total Students	S : T RATIOS		
	Male	Female	Total		2003	2002	Change
Northern Group	7	27	34	568	16.7	15.9	0.8
Rarotonga	47	123	170	2783	16.4	17.5	-1.2
Southern Group	22	70	92	1261	13.7	13.7	0.0
Total	76	220	296	4612	15.6	16.1	-0.5

ISLAND	Number of Teachers			Total Students	S : T RATIOS		
	Male	Female	Total		2003	2002	Change
Aitutaki	7	32	39	560	14.4	14.5	-0.2
Atiu	3	10	13	195	15.0	14.3	0.7
Mangaia	6	13	19	245	12.9	13.5	-0.6
Manihiki	0	9	9	154	17.1	18.4	-1.3
Mauke	5	10	15	174	11.6	11.1	0.5
Mitiaro	1	5	6	87	14.5	15.0	-0.5
Nassau	1	1	2	28	14.0	26.0	-12.0
Palmerston	0	0	0	23	0.0	0.0	0.0
Penrhyn	1	6	7	118	16.9	13.8	3.1
Pukapuka	4	8	12	207	17.3	16.8	0.4
Rakahanga	1	3	4	38	9.5	10.0	-0.5
Rarotonga	47	123	170	2783	16.4	17.5	-1.2
Total	76	220	296	4612	15.6	16.1	-0.5

Note: Teacher numbers include principals and senior teachers.

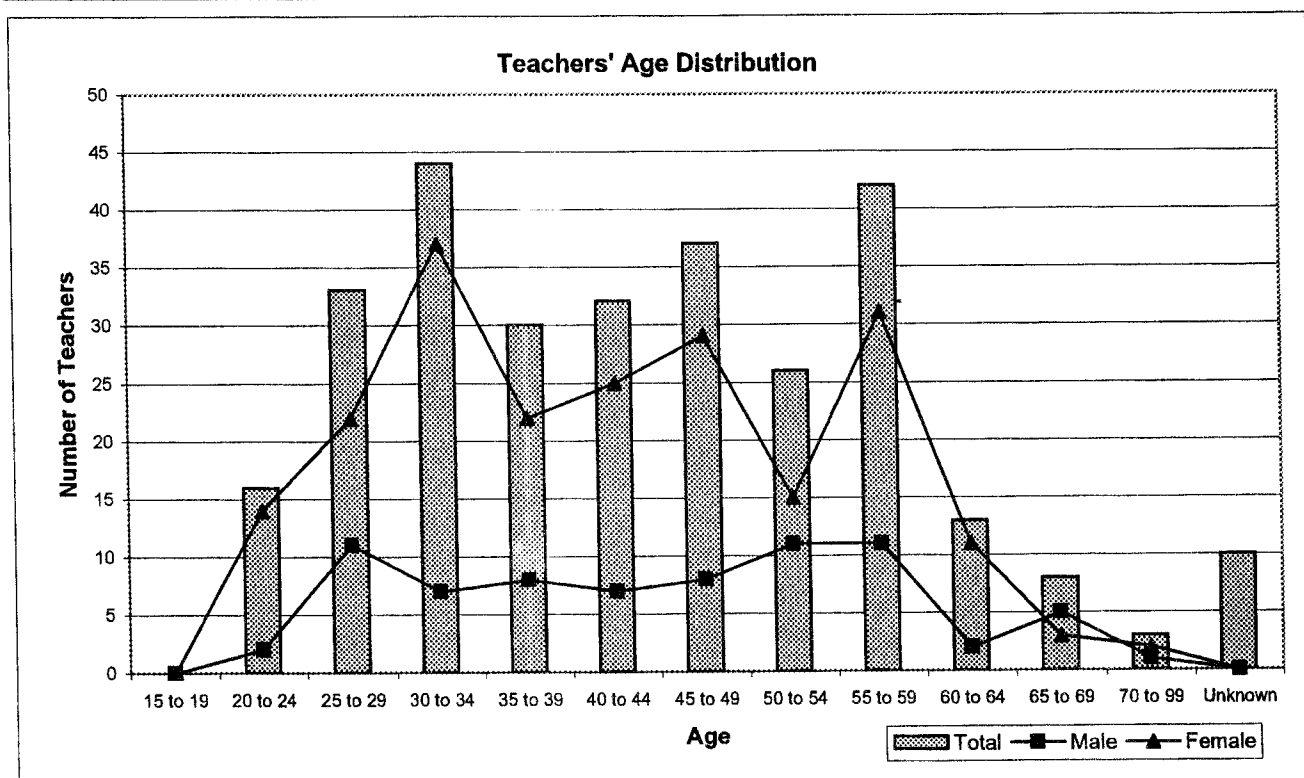


**STUDENT : TEACHER RATIOS (contd)**

SCHOOL	Teachers						S : T RATIO			
	Pre-sch	Primary	Secondary	Male	Female	Total	Pre-sch	Primary	Secondary	Total
Aitutaki SDA	1	2	0	0	3	3	12	23	0	19
Araura College	0	0	17	6	11	17	0	0	14	14
Araura Primary	1	11	0	1	11	12	12	15	0	15
Arorangi Primary School	1	7	3	2	9	11	19	18	11	16
Avarua Primary	3	18	4	4	21	25	23	18	24	20
Avatea Primary	0	16	4	2	18	20	0	19	24	20
Blackrock Pre-school	2	0	0	0	2	2	19	0	0	19
Enuamanu School	1	6	6	3	10	13	22	15	14	15
Imanuela Akademia School	0	3	1	1	3	4	0	14	17	15
Ivirua Primary	1	3	0	1	3	4	6	9	0	9
Lucky Primary	0	0	0	0	0	0	0	0	0	0
Mangaia School	1	5	8	4	10	14	10	16	13	14
Mauke School	0	3	7	5	5	10	0	9	10	12
Mitiaro High School	0	4	2	1	5	6	0	11	12	15
Nassau Primary	0	2	0	1	1	2	0	12	0	14
Nikao Primary	1	7	2	1	9	10	24	13	15	14
Nukutere College	0	0	10	4	6	10	0	0	16	16
Omoka High School	1	3	2	1	5	6	14	14	18	15
Papaaroa College	0	3	3	2	4	6	0	17	8	13
Pukapuka High School	1	6	5	4	8	12	26	17	15	17
Rakahanga High school	1	2	1	1	3	4	6	11	10	10
Rutaki Primary	1	2	0	1	2	3	14	15	0	14
St Joseph's Primary	1	8	0	2	7	9	17	21	0	21
St Mary's Primary	1	3	1	0	5	5	6	11	20	12
Takitumu Primary	2	8	0	1	9	10	17	18	0	18
Tamarua Primary	0	1	0	1	0	1	0	10	0	13
Tauhunu High School	1	2	2	0	5	5	17	20	13	16
Tereora College	0	0	34	20	14	34	0	0	16	16
Tetautua Primary	0	1	0	0	1	1	0	11	0	26
Te-Uki-Ou School	3	10	0	1	12	13	10	9	0	10
Titikaveka College	0	0	13	6	7	13	0	0	13	13
Tukao Primary	1	2	1	0	4	4	12	17	26	18
Vaitau Primary	1	6	0	0	7	7	15	11	0	11
<b>Total</b>	<b>26</b>	<b>144</b>	<b>126</b>	<b>76</b>	<b>220</b>	<b>296</b>	<b>18</b>	<b>16</b>	<b>15</b>	<b>16</b>

## AGE DISTRIBUTION OF TEACHERS

Age Range	Total	Male	Female	%Female	Total %
15 to 19	0	0	0	0	0
20 to 24	16	2	14	88	7
25 to 29	33	11	22	67	10
30 to 34	44	7	37	84	18
35 to 39	30	8	22	73	10
40 to 44	32	7	25	78	12
45 to 49	37	8	29	78	14
50 to 54	26	11	15	58	7
55 to 59	42	11	31	74	15
60 to 64	13	2	11	85	5
65 to 69	8	5	3	38	1
70 to 99	3	1	2	67	1
Unknown	10	0	0	0	0
<b>Total</b>	<b>294</b>	<b>73</b>	<b>211</b>	<b>72</b>	



## 2002/2003 TEACHER COMPARISONS

Teachers	2002	2003	Change	% Change
Total	290	296	6	2
Male	80	76	-4	-5
Female	210	220	10	5
Cook Islanders	253	252	-1	0
Non-Cook Islanders	37	44	7	16
Trained Teachers Cert	248	257	9	4
Tchrs with a Degree	58	59	1	2

# SCHOOL BUILDINGS AND FACILITIES

## SCHOOL CAPACITY

STATUS	Schools	Students	Teachers	Classrooms	S:C Ratio
Church	6	596	37	37	16
Government	25	3843	244	246	16
Private	2	173	15	8	22
<b>Total</b>	<b>33</b>	<b>4612</b>	<b>296</b>	<b>291</b>	<b>16</b>

Note: Classrooms exclude specialist rooms.

S:C Ratio - number of students per class.

REGION	Schools	Students	Teachers	Classrooms	S:C Ratio
Northern Group	8	568	34	38	15
Rarotonga	14	2783	170	150	19
Southern Group	11	1261	92	103	12

ISLAND	Schools	Students	Teachers	Classrooms	S:C Ratio
Aitutaki	4	560	39	36	16
Atiu	1	195	13	20	10
Mangaia	3	245	19	26	9
Manihiki	2	154	9	9	17
Mauke	2	174	15	14	12
Mitiaro	1	87	6	7	12
Nassau	1	28	2	2	14
Palmerston	1	23	0	1	23
Penrhyn	2	118	7	8	15
Pukapuka	1	207	12	12	17
Rakahanga	1	38	4	6	6
Rarotonga	14	2783	170	150	19

## SELECTED BUILDINGS

BUILDING	2003				Changes from 2002			
	Total	Good	To Repair	Area(sq.m)	Total	Good	To Repair	Area(sq.m)
Classroom	291	148	143	22360	-2	-9	7	-11860
Office	56	36	20	1458	-2	-1	-1	-661
Workshop	12	5	7	2486	0	2	-2	-66
Home/Ec.	13	5	8	1398	0	0	0	0
Science Lab	16	8	8	1477	0	5	-5	-248
Hall	9	5	4	3851	0	1	-1	-1173
Staffroom	25	14	11	2090	-1	-4	3	-511
Library	34	26	8	3730	0	-2	2	49

## SELECTED APPARATUS IN ALL SCHOOLS

APPARATUS	2002	2003	Change
Duplicator	9	8	-1
Photocopier	43	45	2
Typewriter	101	45	-56
Computer	156	251	95
Radio	55	67	12
Television/Video	26	24	-2
Overhead projector	25	25	0

## SELECTED FURNITURE IN ALL SCHOOLS

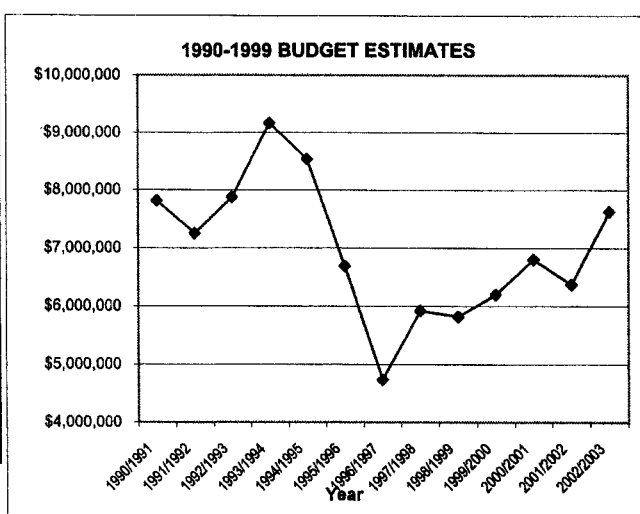
Type of Furniture	2003			Change from 2002		
	Total	Good	To Repair	Total	Good	To Repair
Desk/Table	4043	3676	367	-133	-22	-111
Chair/Form	5137	4535	602	-80	-101	21
Workbench	375	303	72	72	95	-23
Blackboard	432	371	61	9	6	3

## 2002/03 EDUCATION BUDGET

OUTPUT	GROSS ESTIMATE
Curriculum Development	278,495
Preservice Training	370,419
Inservice Training	271,797
School Management	543,588
Secondary Qualifications	151,735
Student Learning Programs	6,011,966
<b>TOTAL</b>	<b>7,628,000</b>

## 1990 - 2003 EDUCATION ESTIMATES

FINANCIAL YEAR	ESTIMATE
1990/1991	\$ 7,811,900
1991/1992	\$ 7,254,900
1992/1993	\$ 7,877,500
1993/1994	\$ 9,167,500
1994/1995	\$ 8,540,000
1995/1996	\$ 6,693,000
1996/1997	\$ 4,735,500
1997/1998	\$ 5,922,738
1998/1999	\$ 5,822,028
1999/2000	\$ 6,195,949
2000/2001	\$ 6,802,989
2001/2002	\$ 6,370,460
2002/2003	\$ 7,628,000
<b>AVERAGE</b>	<b>\$ 6,986,343</b>



Data Source: "Estimates of the Expenditure and Revenue of the Government of the Cook Islands", the "Cook Islands Government Budget Estimates - Appropriation Bill" for 1997/1998 - 2000/2001.

All figures are original gross estimates except the 1993 figure which is the supplementary gross estimate. The 1999/2000 and 2000/2001 figures excludes a Capital Budget appropriation for the MOE.

## MINISTRY OF EDUCATION

### EDUCATION PERSONNEL

Rarotonga	1997	1998	1999	2000	2001	2002	2003
Secretariat/Admin/Acc/Edunet	19	18	10	11	16	17	17
Operations (Curriculum)	12	15	15	17	18	17	18
Audit Quality & Assurance	4	5	4	4	4	8	8
<b>Total MOE Administration</b>	<b>35</b>	<b>38</b>	<b>29</b>	<b>32</b>	<b>38</b>	<b>42</b>	<b>43</b>
MOE Administration	38	40	34	37	38	42	43
School Secretaries	6	5	6	6	6	6	13
School Groundsman	10	10	10	10	10	8	8
Teachers	300	299	297	285	287	290	296
Teacher Trainees	0	0	12	26	29	25	27
<b>Total Education Personnel</b>	<b>354</b>	<b>354</b>	<b>359</b>	<b>364</b>	<b>370</b>	<b>371</b>	<b>387</b>

### GOVERNMENT PAID TEACHERS BY ISLAND

Island	2002	2003	Change	% Change
Aitutaki	38	36	-2	-6
Atiu	13	13	0	0
Mangaia	19	19	0	0
Manihiki	8	9	1	11
Mauke	11	10	-1	-10
Mitiaro	5	6	1	17
Nassau	1	2	1	50
Palmerston	1	0	-1	0
Penrhyn	9	7	-2	-29
Pukapuka	13	12	-1	-8
Rakahanga	4	4	0	0
Rarotonga	118	127	9	7
<b>Total</b>	<b>240</b>	<b>245</b>	<b>5</b>	<b>2</b>
Rarotonga	118	127	9	7
Southern	86	84	-2	-2
Northern	36	34	-2	-6