



**Solomon Islands Government
Ministry Of Education and Human Resource
Development**

**Teaching Service Profile Report
2005**

Introduction	3
Teaching Service Size	4
Early Childhood Education	4
Primary Sector	5
Secondary Sector	6
Teaching Service Qualifications.....	7
Early Childhood Education	7
Primary.....	10
Secondary	12
Teachers' Ages	14
All Sectors	14
Early Childhood Education	14
Primary.....	16
Secondary	17

Introduction

The Teaching Service Profile report is designed to provide an overview of key characteristics of the Solomon Islands teaching service: the size of the teaching service, the qualifications held by teachers, and the ages/experience of teachers. The information is disaggregated by gender to bring to light any differences that may exist between the situations of women and men in the teaching service.

The information is grouped according to three education sectors: Early Childhood Education (ECE), Primary Education (PRI), and Secondary Education (SEC). According to this classification scheme the data about teachers teaching Prep to Standard Six at Community High Schools are grouped with data about Primary School Teachers. Data about teachers teaching Form 1 to Form 7 at Community High Schools are grouped with data about National Secondary School and Provincial Secondary School Teachers.

Where relevant the data about teachers has been presented by Province or Education Authority Type. Breaking down the data in this way reveals differences between the situations of teachers working in different provinces, and working for different kinds of Education Authorities.

For more detail about the teaching service of the Solomon Islands or the information presented in this report, contact the Planning, Coordination and Research Unit of the Ministry of Education and Human Resource Development.

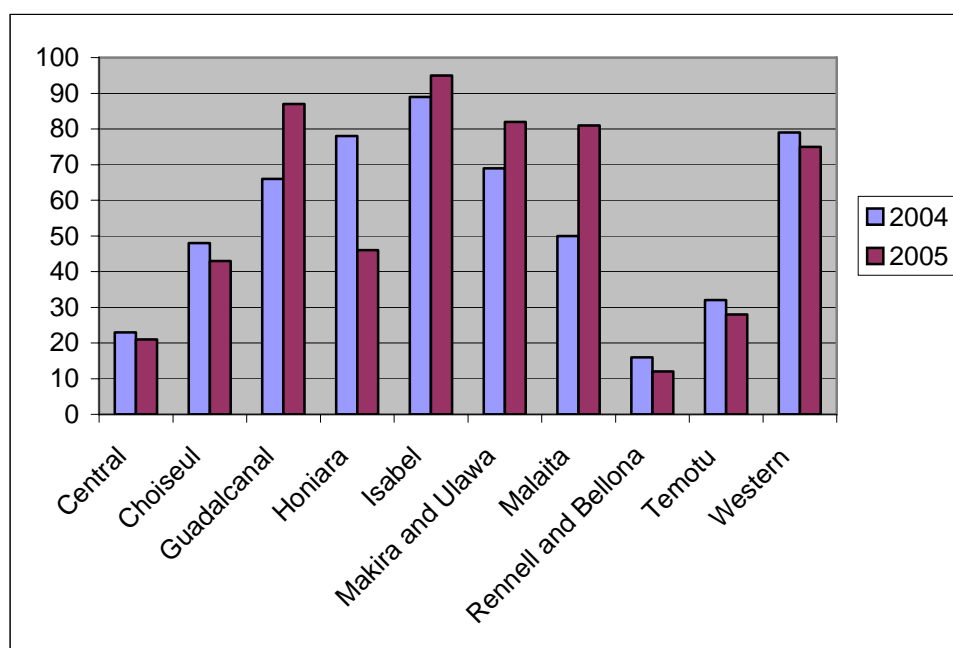
Teaching Service Size

Early Childhood Education

Number of ECE Teachers by Province and Gender, 2004–2005.

No. of Teachers	2004			2005		
	F	M	Total	F	M	Total
Central	15	8	23	16	5	21
Choiseul	47	1	48	42	1	43
Guadalcanal	62	4	66	78	9	87
Honiara	73	5	78	41	5	46
Isabel	79	10	89	88	7	95
Makira and Ulawa	62	7	69	72	10	82
Malaita	37	13	50	60	21	81
Rennell and Bellona	15	1	16	11	1	12
Temotu	28	4	32	21	7	28
Western	74	5	79	70	5	75
Total	492	58	550	499	71	570

Chart of the Number of ECE Teachers by Province, 2004–2005.



Number of ECE Teachers by Education Authority Type, and Gender, 2004–2005.

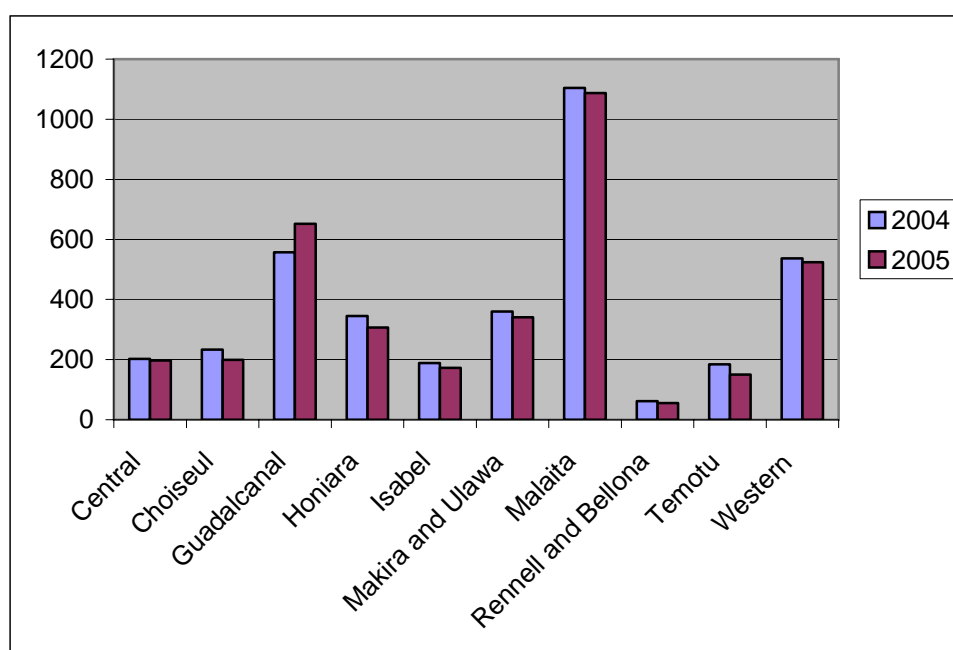
No. of Teachers	2004			2005		
	F	M	Total	F	M	Total
Church	45	4	49	74	10	84
National	0	0	0	0	0	0
Provincial	348	43	391	349	54	403
(blank)	81	9	90	67	6	73
Other	18	2	20	9	1	10
Total	492	58	550	499	71	570

Primary Sector

Number of Primary Teachers by Province and Gender, 2004–2005.

No. of Teachers	2004			2005		
	F	M	Total	F	M	Total
Central	67	135	202	65	132	197
Choiseul	126	107	233	110	89	199
Guadalcanal	218	339	557	252	400	652
Honiara	215	130	345	212	95	307
Isabel	63	125	188	67	105	172
Makira and Ulawa	103	257	360	103	238	341
Malaita	353	751	1104	356	731	1087
Rennell and Bellona	13	49	62	15	40	55
Temotu	53	131	184	62	88	150
Western	257	280	537	274	250	524
Total	1468	2304	3772	1516	2168	3684

Chart of the Number of Primary Teachers by Province, 2004–2005.



Number of Primary Teachers by Education Authority Type and Gender, 2004–2005.

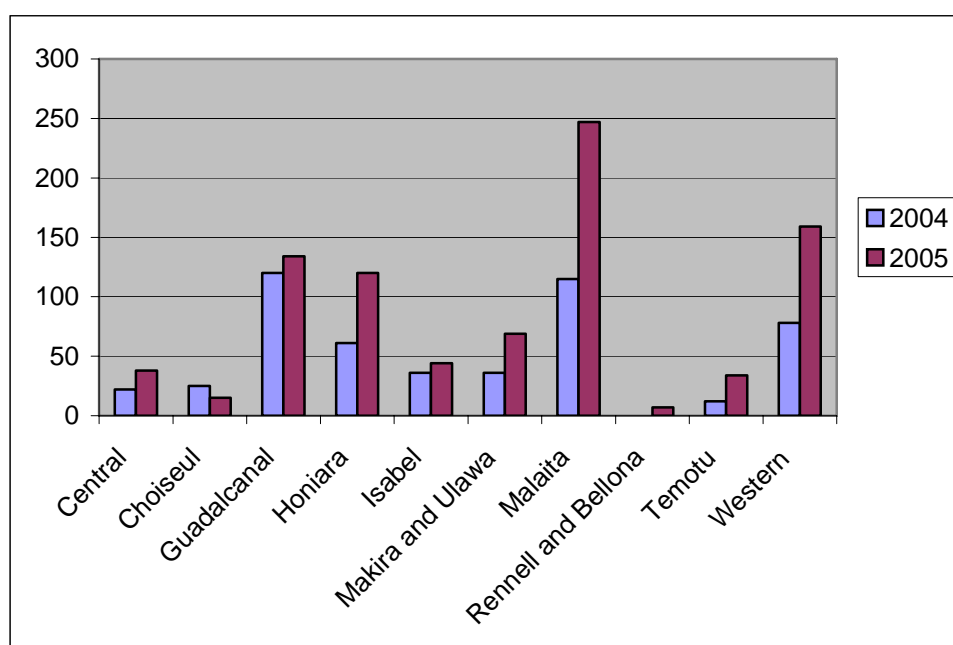
No. of Teachers	2004			2005		
	F	M	Total	F	M	Total
Church	274	313	587	272	291	563
National	0	0	0	0	0	0
Provincial	1146	1943	3089	1193	1832	3025
(blank)	21	45	66	25	39	64
Other	27	3	30	26	6	32
Total	1468	2304	3772	1516	2168	3684

Secondary Sector

Number of Secondary Teachers by Province and Gender, 2004–2005.

No. of Teachers	2004			2005		
	F	M	Total	F	M	Total
Central	7	15	22	7	31	38
Choiseul	11	14	25	5	10	15
Guadalcanal	34	86	120	34	100	134
Honiara	22	39	61	39	81	120
Isabel	5	31	36	3	41	44
Makira and Ulawa	9	27	36	18	51	69
Malaita	28	87	115	58	189	247
Rennell and Bellona	0	0	0	1	6	7
Temotu	1	11	12	8	26	34
Western	22	56	78	47	112	159
Total	139	366	505	220	647	867

Chart of the Number of Secondary Teachers by Province, 2004–2005.



Number of Secondary Teachers by Education Authority Type and Gender, 2004–2005.

No. of Teachers	2004			2005		
	F	M	Total	F	M	Total
Church	63	125	188	73	161	234
National	12	27	39	2	10	12
Provincial	63	207	270	141	466	607
(blank)	1	7	8	4	10	14
Other	0	0	0	0	0	0
Total	139	366	505	220	647	867

Teaching Service Qualifications

All Sectors

In the Solomon Islands Teaching Service, a certified teacher is a teacher who holds a tertiary qualification in teaching or education. A certified teacher is an education specialist whose tertiary training focused on teaching and leading classes. A qualified teacher is any teacher taking a class who has completed at least the required minimum level of academic training. Currently, the minimum required qualification is Form 5 for Primary teachers, and Form 6 for secondary teachers.

Teaching Qualifications Held by Teachers, by Gender, Sector and Qualification Type, 2005.

Highest Teaching Qualification	ECE			PRI			SEC		
	F	M	T	F	M	T	F	M	T
Teaching Certificate SICHE	58	9	67	843	1273	2116	14	27	41
Teaching Certificate Other	1	0	1	44	110	154	93	235	328
Teaching Diploma SICHE	20	2	22	44	36	80	18	49	67
Teaching Diploma Other	1	1	2	11	20	31	11	32	43
Grad. Diploma Education	0	0	0	1	1	2	0	5	5
Bachelor of Education	0	0	0	21	15	36	30	79	109
Masters of Education	0	0	0	0	0	0	1	9	10
Not Supplied	419	59	478	552	713	1265	53	211	264
Total	499	71	570	1516	2168	3684	220	647	867

Early Childhood Education

Number and Percentage of Qualified ECE Teachers by Province and Gender, 2004–2005.

Qualified Teachers	2004						2005					
	No. Qualified			% Qualified			No. Qualified			% Qualified		
	F	M	T	F	M	T	F	M	T	F	M	T
Central	1	0	1	6.7%	0.0%	4.3%	3	0	3	18.8%	0.0%	14.3%
Choiseul	7	1	8	14.9%	100.0%	16.7%	7	1	8	16.7%	100.0%	18.6%
Guadalcanal	8	0	8	12.9%	0.0%	12.1%	6	0	6	7.7%	0.0%	6.9%
Honiara	29	3	32	39.7%	60.0%	41.0%	24	5	29	58.5%	100.0%	63.0%
Isabel	5	1	6	6.3%	10.0%	6.7%	6	1	7	6.8%	14.3%	7.4%
Makira and Ulawa	8	2	10	12.9%	28.6%	14.5%	10	2	12	13.9%	20.0%	14.6%
Malaita	5	1	6	13.5%	7.7%	12.0%	11	2	13	18.3%	9.5%	16.0%
Rennell and Bellona	0	0	0	0.0%	0.0%	0.0%	0	0	0	0.0%	0.0%	0.0%
Temotu	7	1	8	25.0%	25.0%	25.0%	6	2	8	28.6%	28.6%	28.6%
Western	11	0	11	14.9%	0.0%	13.9%	13	0	13	18.6%	0.0%	17.3%
Totals	81	9	90	16.5%	15.5%	16.4%	86	13	99	17.2%	18.3%	17.4%

Chart of the Percentage of Qualified ECE Teachers by Province, 2004–2005.

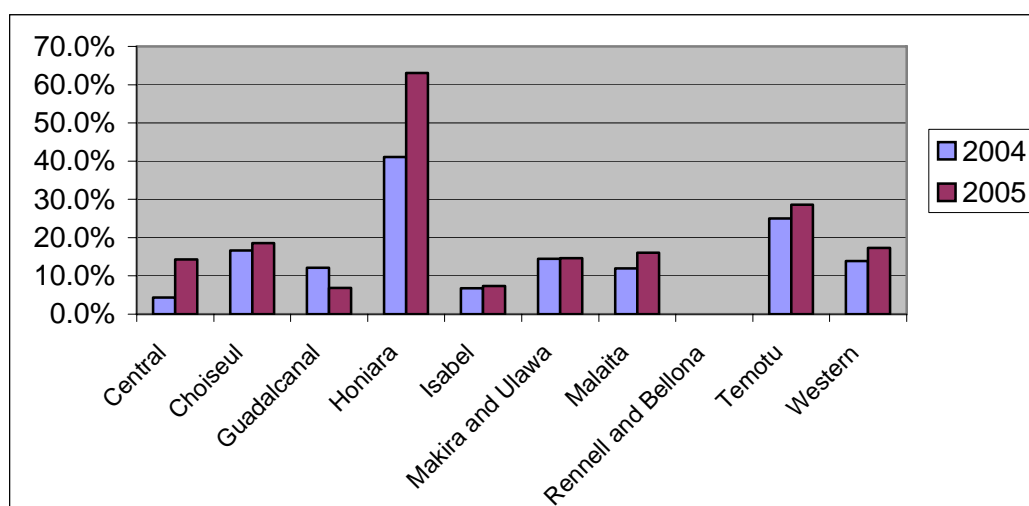
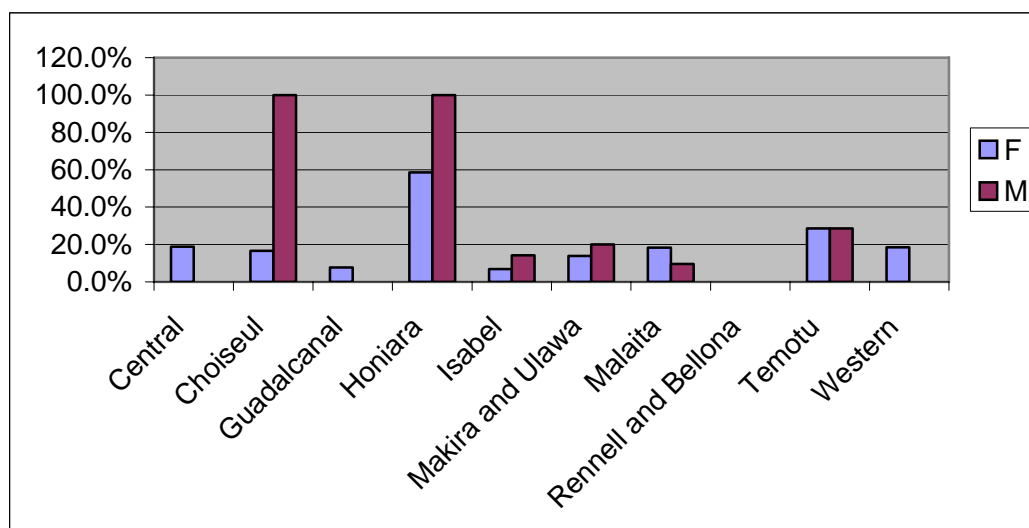
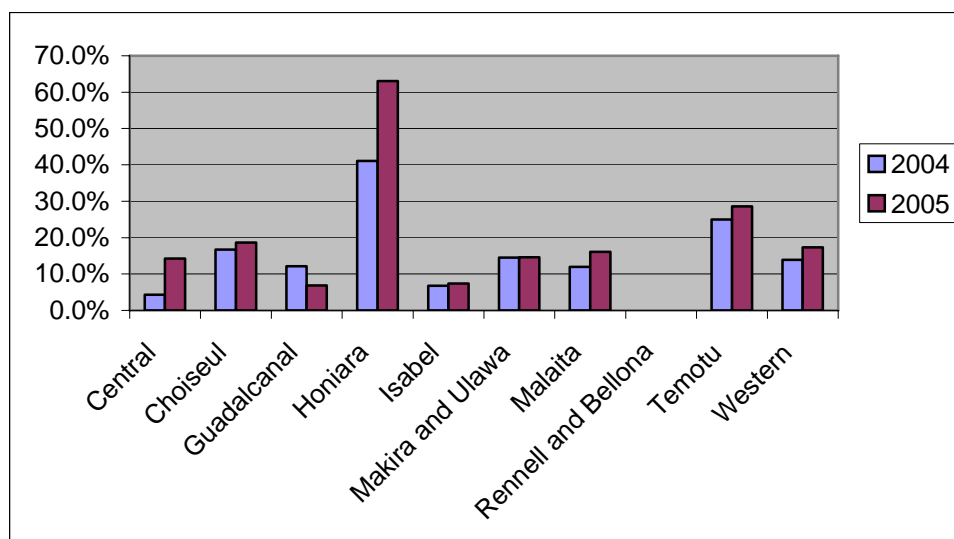


Chart of the Percentage of Qualified Female ECE Teachers and Qualified Male ECE Teachers by Province, 2005.



Number and Percentage of Certified ECE Teachers by Province and Gender, 2004–2005.

Certified Teachers	2004						2005					
	No. Certified			% Certified			No. Certified			% Certified		
	F	M	T	F	M	T	F	M	T	F	M	T
Central	1	0	1	6.7%	0.0%	4.3%	3	0	3	18.8%	0.0%	14.3%
Choiseul	7	1	8	14.9%	100.0%	16.7%	7	1	8	16.7%	100.0%	18.6%
Guadalcanal	8	0	8	12.9%	0.0%	12.1%	5	0	5	6.4%	0.0%	6.9%
Honiara	28	3	31	38.4%	60.0%	41.0%	24	5	29	58.5%	100.0%	63.0%
Isabel	5	1	6	6.3%	10.0%	6.7%	6	1	7	6.8%	14.3%	7.4%
Makira and Ulawa	8	2	10	12.9%	28.6%	14.5%	10	2	12	13.9%	20.0%	14.6%
Malaita	4	1	5	10.8%	7.7%	12.0%	10	2	12	16.7%	9.5%	16.0%
Rennell and Bellona	0	0	0	0.0%	0.0%	0.0%	0	0	0	0.0%	0.0%	0.0%
Temotu	7	1	8	25.0%	25.0%	25.0%	4	1	5	19.0%	14.3%	28.6%
Western	11	0	11	14.9%	0.0%	13.9%	11	0	11	15.7%	0.0%	17.3%
Totals	79	9	88	16.5%	15.5%	16.4%	80	12	92	17.2%	18.3%	17.4%

Chart of the Percentage of Certified ECE Teachers by Province, 2004–2005.

Primary

Number and Percentage of Qualified Primary Teachers by Province and Gender, 2004–2005.

Qualified Teachers	2004						2005					
	No. Qualified			% Qualified			No. Qualified			% Qualified		
	F	M	T	F	M	T	F	M	T	F	M	T
Central	58	115	173	86.6%	85.2%	85.6%	53	102	155	81.5%	77.3%	78.7%
Choiseul	93	87	180	73.8%	81.3%	77.3%	60	61	121	54.5%	68.5%	60.8%
Guadalcanal	148	235	383	67.9%	69.3%	68.8%	162	261	423	64.3%	65.3%	64.9%
Honiara	181	115	296	84.2%	88.5%	85.8%	151	69	220	71.2%	72.6%	71.7%
Isabel	57	118	175	90.5%	94.4%	93.1%	59	102	161	88.1%	97.1%	93.6%
Makira and Ulawa	70	179	249	68.0%	69.6%	69.2%	65	157	222	63.1%	66.0%	65.1%
Malaita	224	512	736	63.5%	68.2%	66.7%	206	443	649	57.9%	60.6%	59.7%
Rennell and Bellona	7	32	39	53.8%	65.3%	62.9%	7	27	34	46.7%	67.5%	61.8%
Temotu	45	111	156	84.9%	84.7%	84.8%	44	77	121	71.0%	87.5%	80.7%
Western	162	210	372	63.0%	75.0%	69.3%	165	197	362	60.2%	78.8%	69.1%
Totals	1045	1714	2759	71.2%	74.4%	73.1%	972	1496	2468	64.1%	69.0%	67.0%

Chart of the Percentage of Qualified Primary Teachers by Province, 2004–2005.

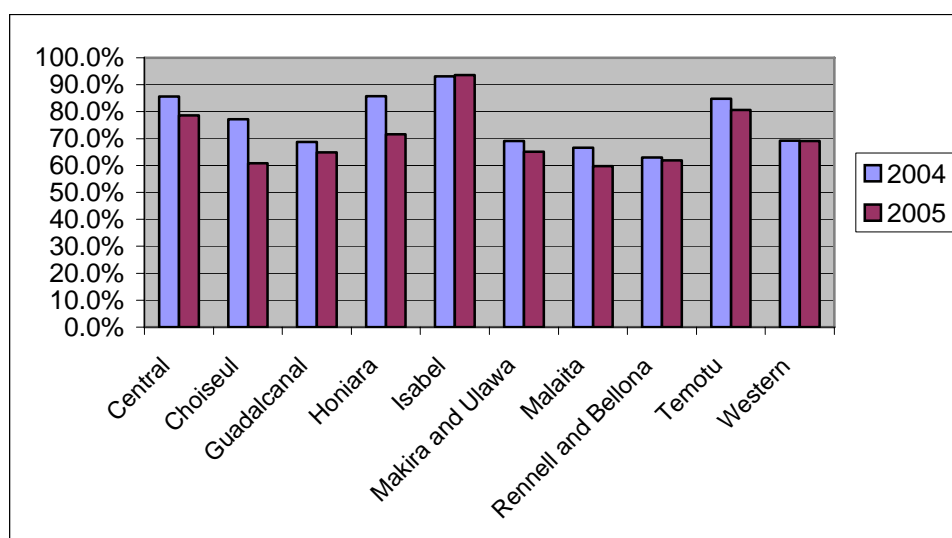
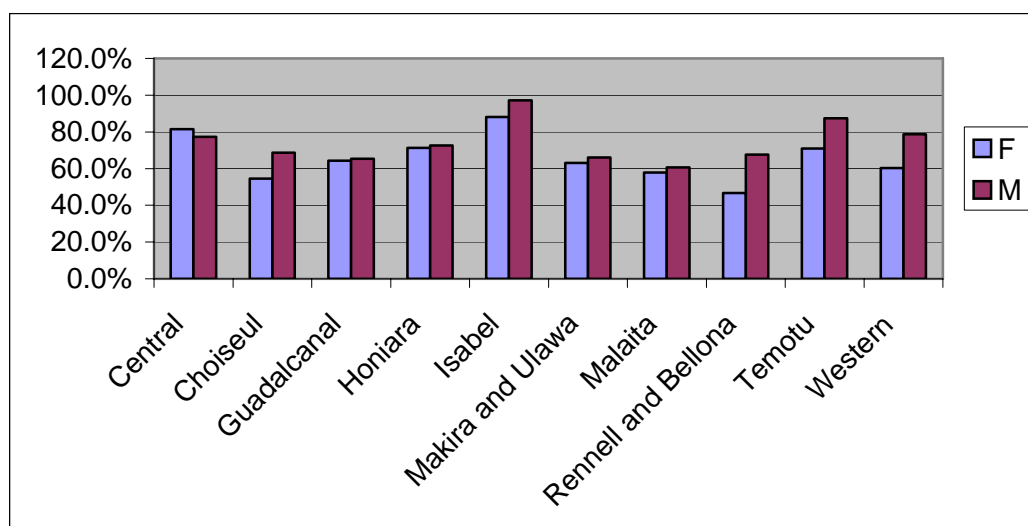
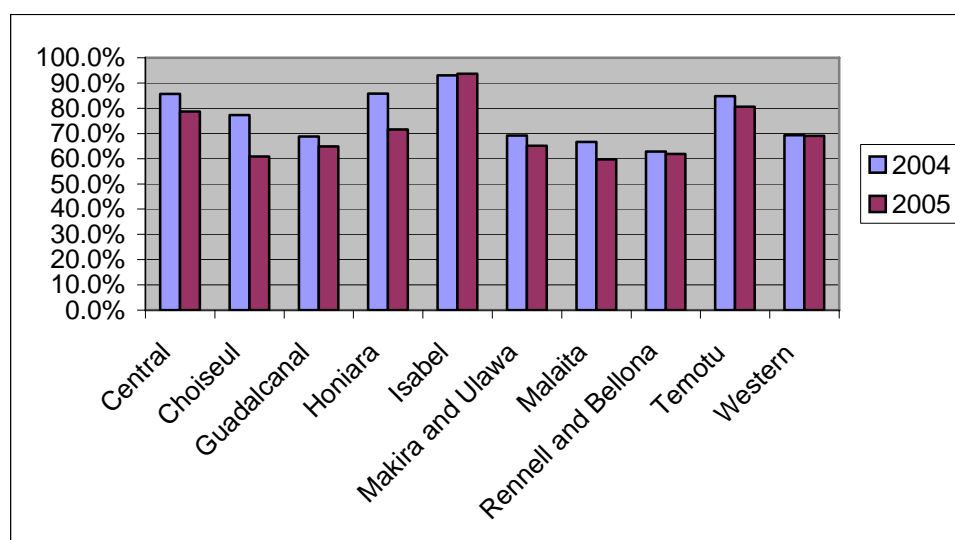


Chart of the Percentage of Qualified Female Primary Teachers, and Qualified Male Primary Teachers, by Province, 2005.



Number and Percentage of Certified Primary Teachers by Province and Gender, 2004–2005.

Certified Teachers	2004						2005					
	No. Certified			% Certified			No. Certified			% Certified		
	F	M	T	F	M	T	F	M	T	F	M	T
Central	58	114	172	86.6%	85.2%	85.6%	53	102	155	81.5%	77.3%	78.7%
Choiseul	93	81	174	73.8%	81.3%	77.3%	60	56	116	54.5%	68.5%	60.8%
Guadalcanal	146	229	375	67.9%	69.3%	68.8%	161	252	413	64.3%	65.3%	64.9%
Honiara	180	110	290	84.2%	88.5%	85.8%	148	65	213	71.2%	72.6%	71.7%
Isabel	56	118	174	90.5%	94.4%	93.1%	59	102	161	88.1%	97.1%	93.6%
Makira and Ulawa	69	163	232	68.0%	69.6%	69.2%	65	145	210	63.1%	66.0%	65.1%
Malaita	217	502	719	63.5%	68.2%	66.7%	202	436	638	57.9%	60.6%	59.7%
Rennell and Bellona	7	27	34	53.8%	65.3%	62.9%	7	24	31	46.7%	67.5%	61.8%
Temotu	45	110	155	84.9%	84.7%	84.8%	44	76	120	71.0%	87.5%	80.7%
Western	160	207	367	63.0%	75.0%	69.3%	165	197	362	60.2%	78.8%	69.1%
Totals	1031	1661	2692	71.2%	74.4%	73.1%	964	1455	2419	64.1%	69.0%	67.0%

Chart of the Percentage of Certified Primary Teachers by Province, 2004–2005.

Secondary

Number and Percentage of Qualified Secondary Teachers by Province and Gender, 2004–2005.

Qualified Teachers	2004						2005					
	No. Qualified			% Qualified			No. Qualified			% Qualified		
	F	M	T	F	M	T	F	M	T	F	M	T
Central	4	14	18	57.1%	93.3%	81.8%	5	24	29	71.4%	77.4%	76.3%
Choiseul	8	12	20	72.7%	85.7%	80.0%	3	6	9	60.0%	60.0%	60.0%
Guadalcanal	32	79	111	94.1%	91.9%	92.5%	31	91	122	91.2%	91.0%	91.0%
Honiara	19	33	52	86.4%	84.6%	85.2%	29	52	81	74.4%	64.2%	67.5%
Isabel	2	30	32	40.0%	96.8%	88.9%	3	32	35	100.0%	78.0%	79.5%
Makira and Ulawa	6	21	27	66.7%	77.8%	75.0%	15	38	53	83.3%	74.5%	76.8%
Malaita	27	78	105	96.4%	89.7%	91.3%	43	148	191	74.1%	78.3%	77.3%
Rennell and Bellona	0	0	0	0.0%	0.0%	0.0%	1	5	6	100.0%	83.3%	85.7%
Temotu	1	11	12	100.0%	100.0%	100.0%	5	16	21	62.5%	61.5%	61.8%
Western	20	49	69	90.9%	87.5%	88.5%	40	92	132	85.1%	82.1%	83.0%
Totals	119	327	446	85.6%	89.3%	88.3%	175	504	679	79.5%	77.9%	78.3%

Chart of the Percentage of Qualified Secondary Teachers by Province, 2004–2005.

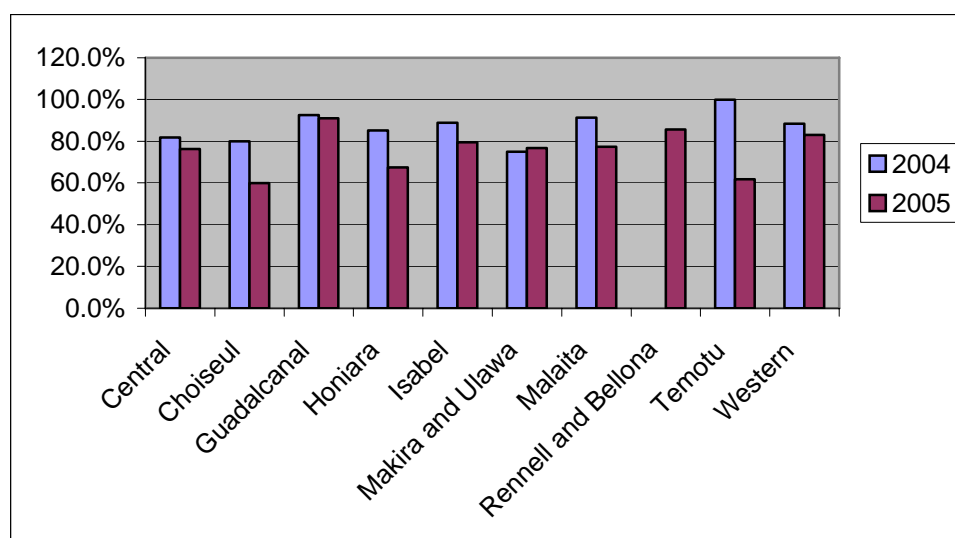
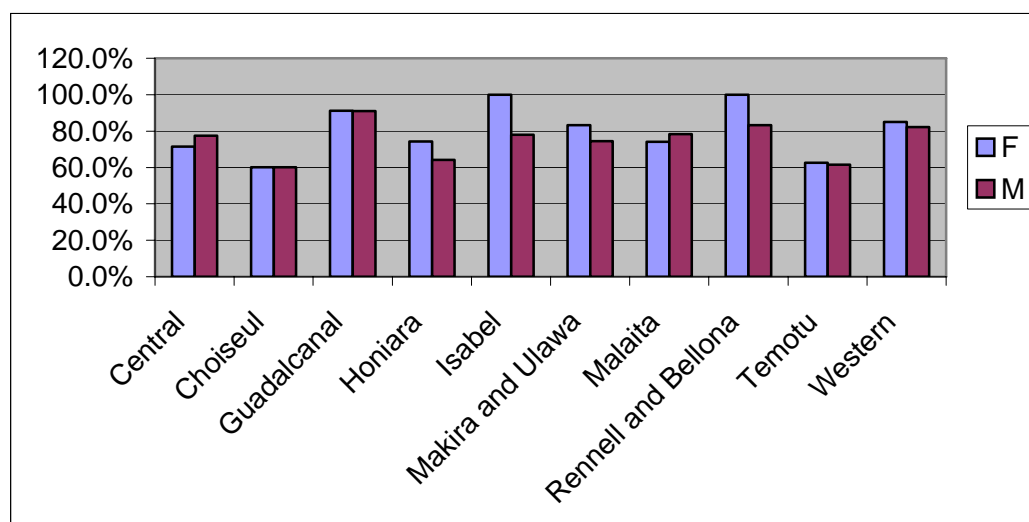
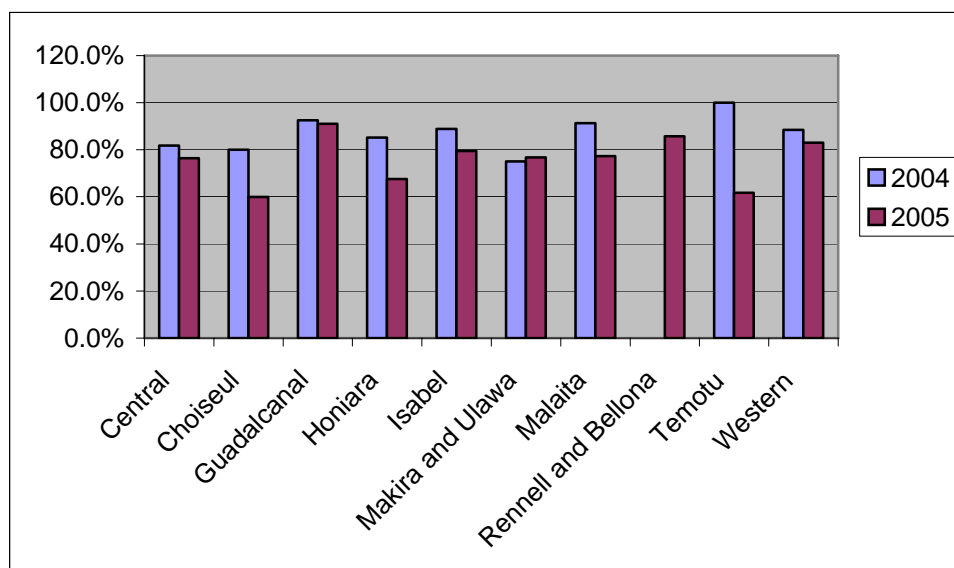


Chart of the Percentage of Qualified Female Secondary Teachers, and Qualified Male Secondary Teachers, by Province, 2005.



Number and Percentage of Certified Secondary Teachers by Province and Gender, 2004–2005.

Certified Teachers	2004						2005					
	No. Certified			% Certified			No. Certified			% Certified		
	F	M	T	F	M	T	F	M	T	F	M	T
Central	3	14	17	57.1%	93.3%	81.8%	5	23	28	71.4%	77.4%	76.3%
Choiseul	8	11	19	72.7%	85.7%	80.0%	3	5	8	60.0%	60.0%	60.0%
Guadalcanal	25	62	87	94.1%	91.9%	92.5%	27	66	93	91.2%	91.0%	91.0%
Honiara	19	28	47	86.4%	84.6%	85.2%	29	49	78	74.4%	64.2%	67.5%
Isabel	2	29	31	40.0%	96.8%	88.9%	3	30	33	100.0%	78.0%	79.5%
Makira and Ulawa	5	19	24	66.7%	77.8%	75.0%	14	33	47	83.3%	74.5%	76.8%
Malaita	26	63	89	96.4%	89.7%	91.3%	41	130	171	74.1%	78.3%	77.3%
Rennell and Bellona	0	0	0	0.0%	0.0%	0.0%	1	5	6	100.0%	83.3%	85.7%
Temotu	1	9	10	100.0%	100.0%	100.0%	5	14	19	62.5%	61.5%	61.8%
Western	20	42	62	90.9%	87.5%	88.5%	39	81	120	85.1%	82.1%	83.0%
Totals	109	277	386	85.6%	89.3%	88.3%	167	436	603	79.5%	77.9%	78.3%

Chart of the Percentage of Certified Secondary Teachers by Province, 2004–2005.

Teachers' Ages

All Sectors

Average Age of Teachers by Gender and Sector, 2003–2005.

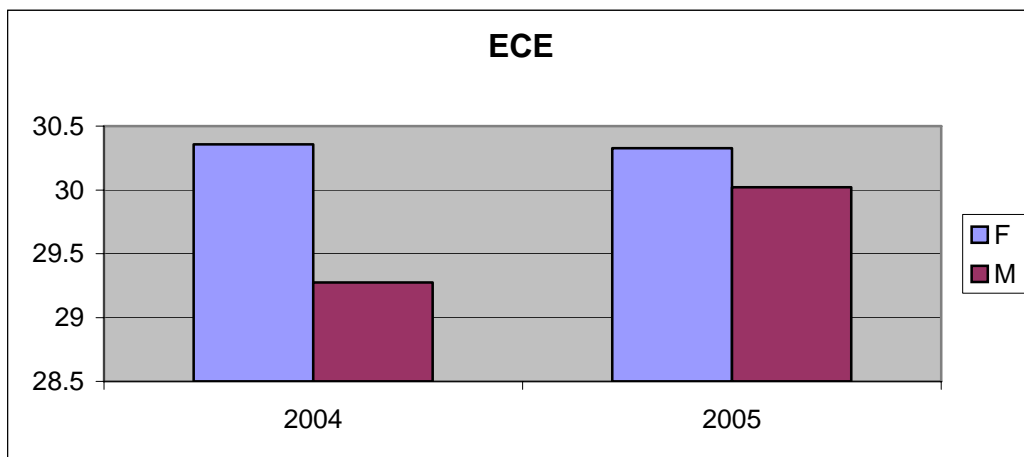
Average Age	2003			2004			2005		
	F	M	T	F	M	T	F	M	T
ECE	n/a	n/a	n/a	30.4	29.3	30.3	30.3	30	30.3
PRI	34.3	35.8	35.2	33.8	35.6	34.9	34.6	36.3	35.6
SEC	33.3	35.2	34.8	32.8	37.1	36	32	35.7	34.8
All Sectors	34	36	35	33	36	34	33	36	35

Average Age of Teachers by Qualification, Gender and Sector, 2005.

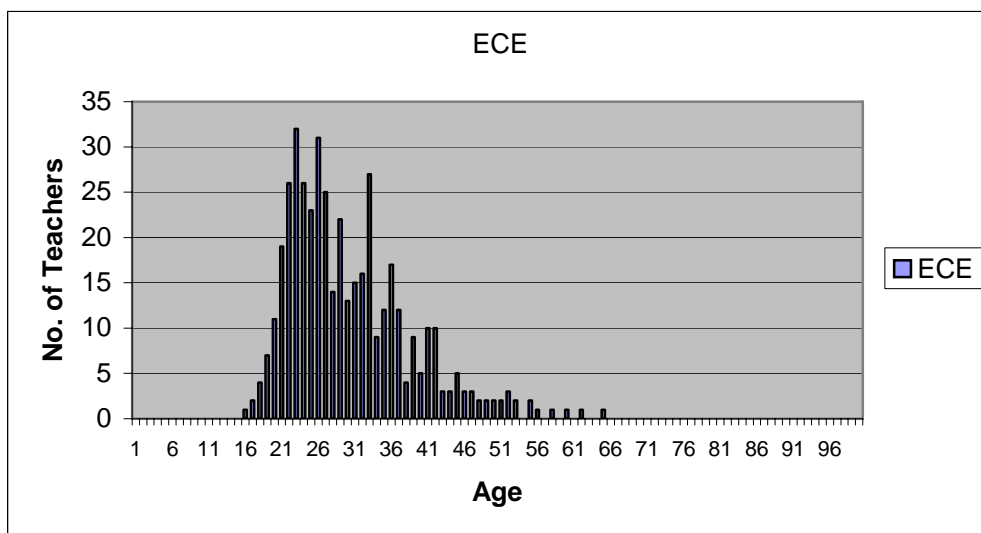
Qualification Held	ECE			PRI			SEC		
	F	M	T	F	M	T	F	M	T
SISC	28.4	26.5	28.2	30.5	32.1	31.4	32.7	30.2	30.9
PSSC	28.1	30.3	28.4	30.3	33.8	32.8	26	27.5	27
Certificate	35	32	34.8	39.5	39.8	39.7	35.1	38	37.4
Diploma	29	41	35	46.5	40.9	41.5	38.3	41.2	40.7
Bachelor Degree	0	0	0	37.5	40.4	39.8	38.7	37.5	37.6
Grad. Certificate	42.5	0	42.5	58	38.6	41.8	0	0	0
Grad. Diploma	0	0	0	0	41	41	33	42.1	41.2
Masters Degree	0	0	0	0	0	0	45	47.8	47.3

Early Childhood Education

Average Age of ECE Teachers by Gender, 2004–2005.

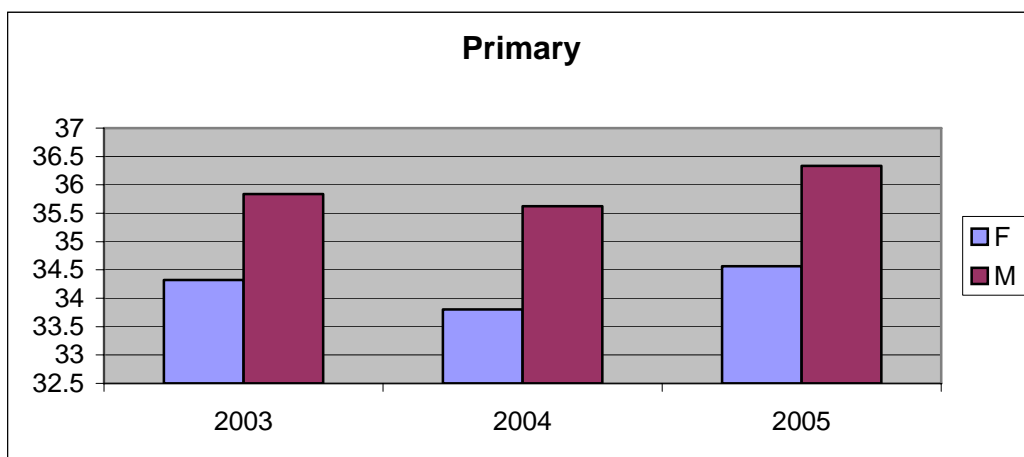


Distribution of ECE Teachers' Ages, 2005.

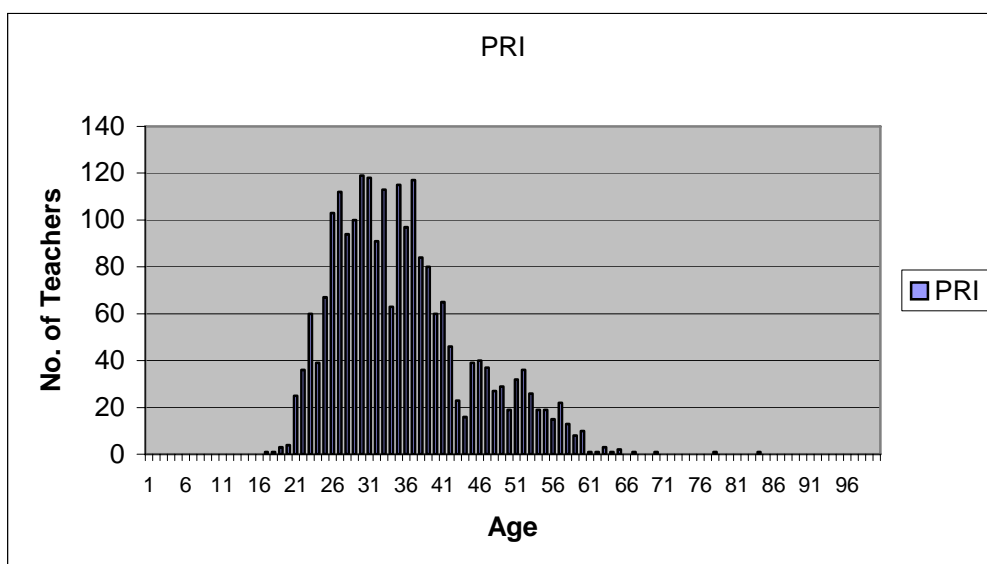


Primary

Average Age of Primary Teachers by Gender, 2003–2005.

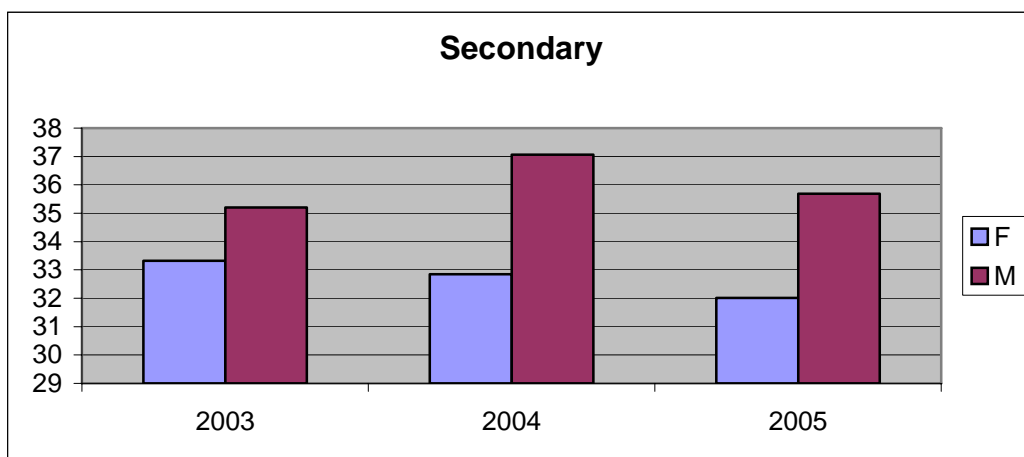


Distribution of Primary Teachers' Ages, 2005.



Secondary

Average Age of Secondary Teachers by Gender, 2003–2005.



Distribution of Secondary Teachers by Age, 2005.

