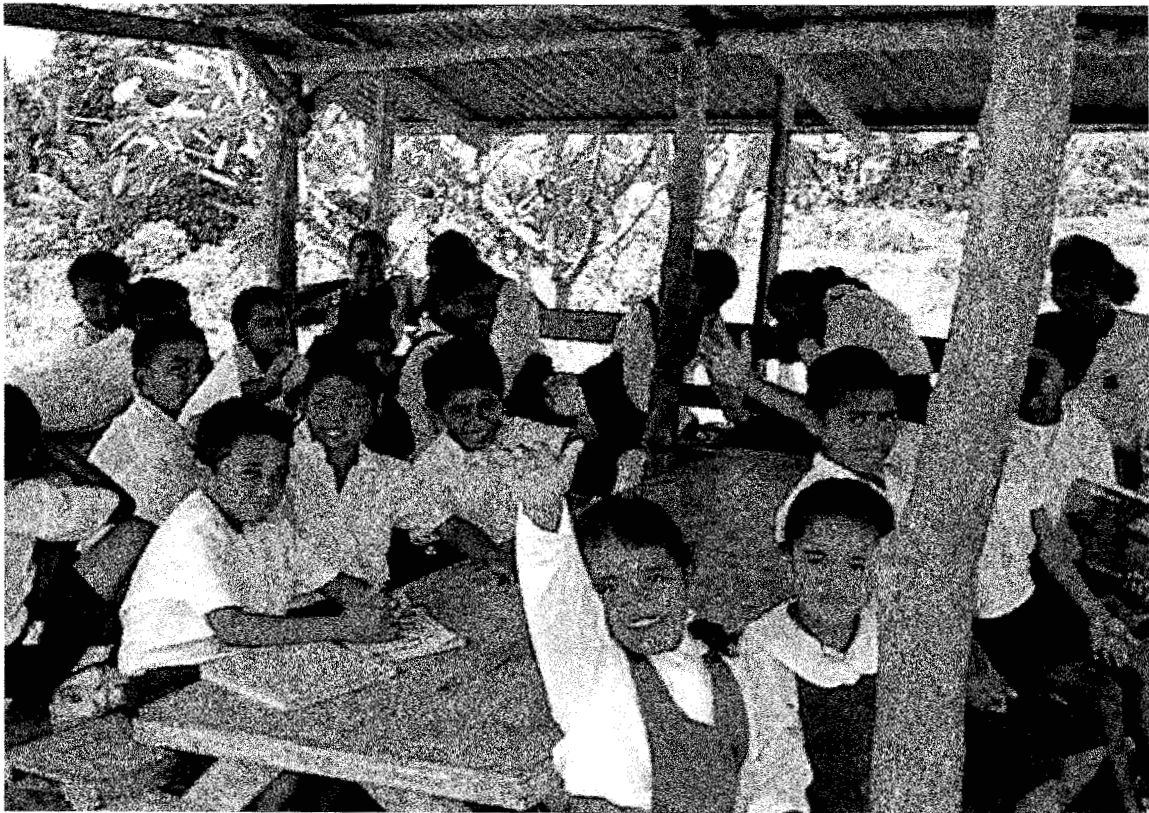


4/28/03 ✱

# *Ministry of Education*

## *2002 Annual Report*



VISION FOR OUR CHILDREN:

*"OUR STUDENTS WILL BE SUCCESSFUL  
IN THE PALAUAN SOCIETY AND THE WORLD"*

**Ministry of Education**  
**VISION & MISSION STATEMENTS**

**Vission Statement**

**“OUR STUDENTS WILL BE SUCCESSFUL IN THE PALAUAN  
SOCIETY AND THE WORLD”**

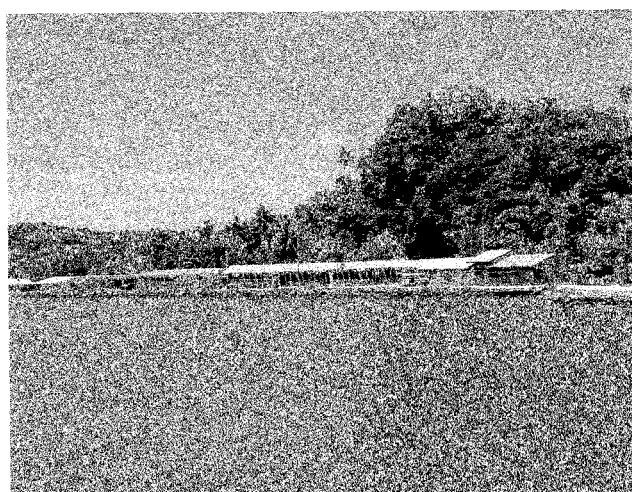


**Mission Statement**

*The Republic of Palau's Ministry of Education, in partnership with students, parents and community, is to ensure student success through effective curriculum and instruction in a conducive learning environment.*

## Table of Contents

Vision & Mission Statements	2
Palau Map	4
Ministers Message	5
MOE 2002 Performance	6-7,27,29
Budget & Expenditure Structure	
MOE Federal Grants	
School Improvement Initiatives	
Improving Student Achievement	
Elementary School Information	8
Background History	
Current Data & Information	
Palau High School	25
Background History	
Current Data & Information	
Technological Programs	
Counseling	
Special Education Program	28
Accomplishment & Achievement	
MOE Budget Charts	30
Enrollment Summary	32
Palau Achievement Test National Report	34
MOE facilities and activities in pictures	37



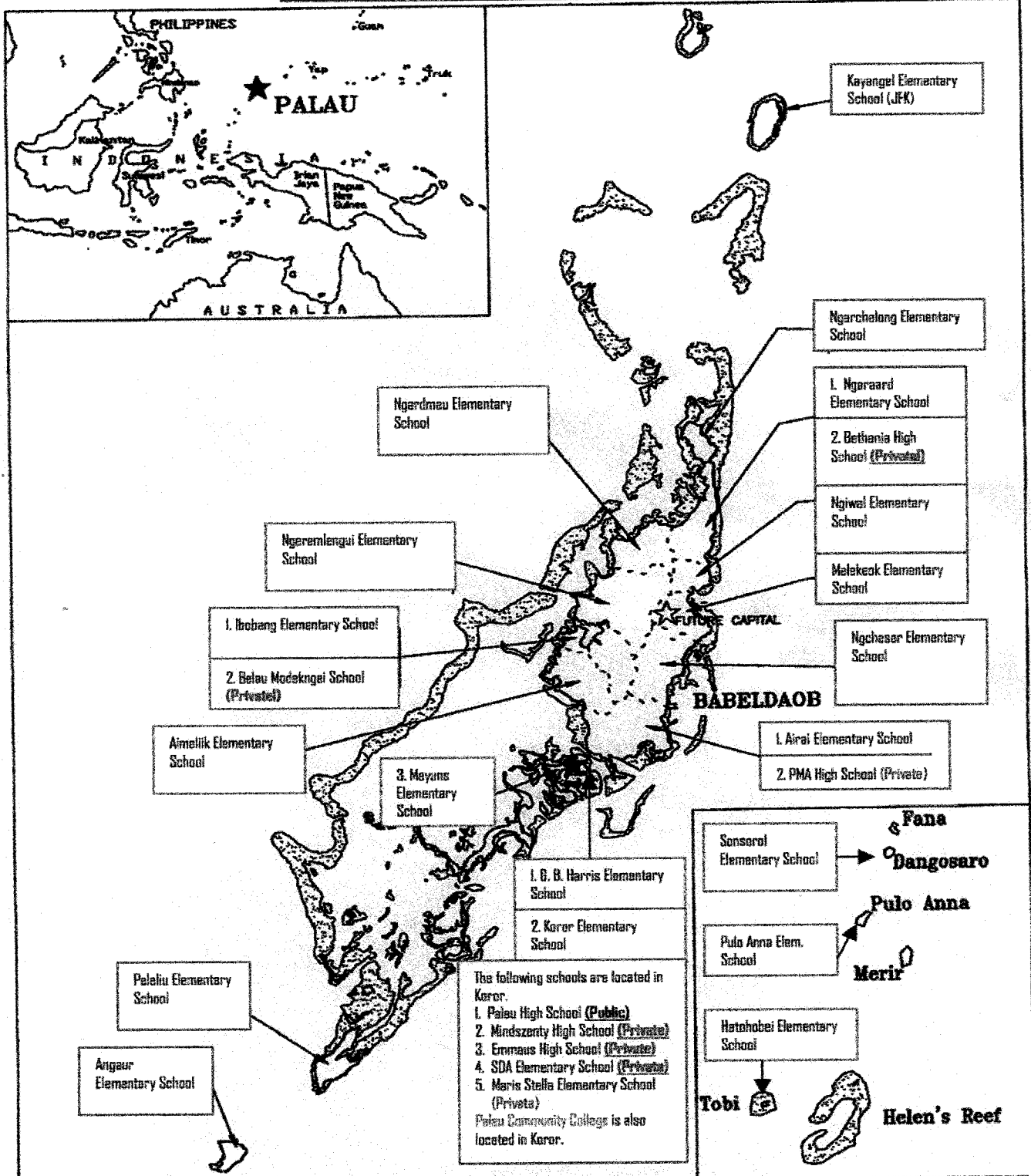
Ngchesar Elementary School



Ngiwal E.S. students playing "komu"

# PALAU SCHOOLS

January 31, 2002



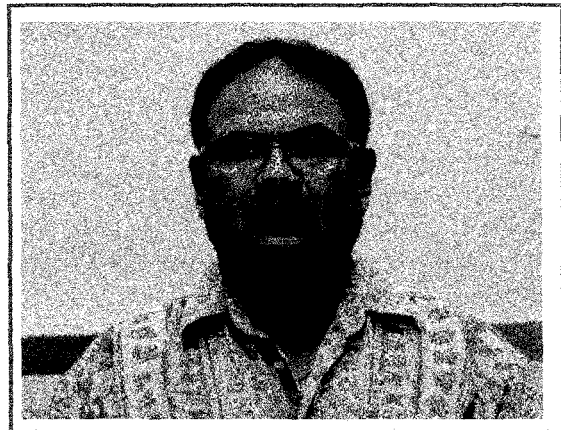
BUREAU OF EDUCATION

Prepared by: Dwight J. Alexander



### Message from the Minister

Taking the journey with students is challenging but rewarding. It is worthy and deserving of our very best efforts each day. To ensure our students are successful in our society and the world, we must continue to train our teachers to ensure that they have the skills, knowledge, and attitude to guarantee our students success, today, tomorrow, and in the future.



*The Honorable Mario Katosang  
Minister of Education*

The success of our students will be secured, if and only if, we continue to invest our limited resources in the improvement and advancement of our teachers. Teachers are tasked with continuous challenges in ensuring that students leave our classrooms with skills, knowledge, and attitudes that are necessary ingredients of successful and contributing members of our society and the world.

Let us strive to ensure that our teachers are the very best because there are no other options.



*The Ministry of Education  
Administrative Support Staff*

## 2002 Performance

This report will serve as the Ministry of Education Annual Report as well as the State of the Ministry of Education Report.

The Ministry of Education is the largest of the eight ministries of the government of the Republic of Palau in terms of personnel and the budget. The ministry receives about 12% of the Republic of Palau national budget, which translates to about 6.5 million U.S. Dollars. In addition, the ministry receives about 2.8 million U.S. Dollars for its federally funded programs.

The Ministry of Education is tasked with the responsibility of operating and managing the public school system. There are 19 elementary schools and one public high school. The 19 elementary schools are scattered throughout the Republic, from the state of Kayangel to the Northeast to the state of Hatothobei to the South. The enrollment in these 19 elementary schools varies with the smallest with 4 students in Tobi Elementary School to the biggest, Koror Elementary School with 753 students. Students attending Palau High School come mostly from all of the public elementary schools as well as from the private elementary schools. Students commute to school on their own or take school buses provided by the ministry. Students who are not from Koror usually live with relatives while attending schools.

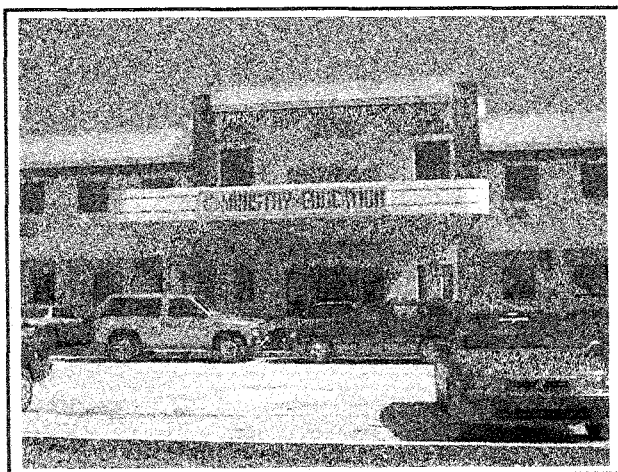
It is important to note that in addition to providing free textbooks for all subjects, the ministry also provides free transportation to and from school as well as free lunch during school days. The ministry is mandated to teach 5 core subjects: Palauan, English, Math, Science, and Social Studies. In addition to five core subjects taught in schools, instruction is provided once or twice each week in Career Guidance, Health, and physical education. The Ministry of Education has 469 employees, of whom 260 or 55% are classroom teachers. The average teacher salary is about \$10,000. About 38% of our elementary school teachers are only high school graduates. About 34% hold associate degrees or equivalent. About 26% hold four year degrees or bachelors and about 2% hold post graduate degrees. In Palau High School, about 40% hold associate degrees and are vocational teachers and the rest either have bachelor degrees or higher.

During the past year, in addition to its regular operation, the Ministry of Education undertook the following objectives in order to improve and advance its program and services.

- Improve student achievement
- Improve the capability of MOE human resources base
- Improve MOE's ability to assess its programs.
- Provide conducive classroom environment

### Budget and Expenditure structure

- \$6,570,200 total allocation from the Republic of Palau
  - ✓ \$4,494,429 or 68% was spent on 469 personnel this fiscal year compared with \$5,135,726 or 76% for 486 personnel last year.
  - ✓ \$2,500,527 or 38% was spent on teachers' salary
  - ✓ \$1,993,902 or 30% was spent on support and management personnel
  - ✓ \$137,349.67 or 2% is a saving from personnel compared with FY 2001 budget.
- \$250,000 or 3.8% was spent on textbooks
- \$201,827 or 3.1% was spent on instructional and office supplies.



Ministry of Education  
Administration Building

(Continue Budget & Expenditure structure)

- \$254,108 or 3.9% was spent on student's lunch program
- \$180,000 or 2.7% was spent on equipment
- \$59,204 or .9% was spent on transportation
- \$149,450 or 2.3% was spent on maintenance and renovation of schools.
- \$40,944 or 6% was spent on communication
- \$185,088 or 2.8% was spent on electrical consumption

### MOE Federal Grants

The Ministry of Education receives funding from the US Federal Government for personnel development and program development.

- \$998,829 Special Education Program for Pacific Island Entities (SEPPIE)

- ✓ The Special Education Program is the only program in Palau that provides services to students and youth with disabilities in Palau.
- ✓ A Center has been established for pre-school aged children with development disabilities.
- ✓ Special Education services are now available throughout Palau, including rural schools.
- ✓ Collaboration between Special Education Program and Head Start Program has resulted in improved referral process and delivery of services to children with disabilities.
- ✓ All public schools now have special education resource rooms and special education teachers.
- ✓ Special Education services have been expanded to include private schools.
- ✓ Special Education facilities and accessibility to public school facilities were made possible through the Special Education Program.

## MOE Report (continue)

- ✓ Physical and speech therapy services are now available for Head Start, pre-school, elementary, and high school students.
- \$928,930 Freely Associated State Grant for Teacher Training and Curriculum Improvement
  - ✓ Development of Student Leadership, study skills and work experience through student leadership institute, job shadowing, mentoring, summer work experience program, and career practicum.
  - ✓ Development, revision, alignment of curriculum frameworks, standards, benchmarks, assessment and instruction for all content areas for all grade levels.
  - ✓ Professional development and training for teachers and principals, including development of professional certification system for teachers and principals.
  - ✓ Development of career guidance program for grades 1-12, including training of teachers and principals on career guidance strategies.
  - ✓ Promotion of school partnership with parents, families, community members, including establishment of Belau Family School Community Association and training on parental skills and tutorial services.
  - ✓ Promotion of partnership with local businesses, including establishment of Employers and Educators Alliance, which help enroll students in local businesses for work-based learning and experience.
  - ✓ Integration of technology and computer assisted instruction in classroom learning, which has resulted in numerous computer technology training for teachers and computer lab managers.
  - ✓ Interagency Collaboration with institutions of higher education and other service providers to provide training and other technical assistance to teachers.
  - ✓ Improve accountability through a centralized data management system which collects, processes, and generates reports for decision making.
- \$195,250 Bilingual Comprehensive School Grant to to strengthen English Language Program at the high school (sunset this year)
  - ✓ Computer assisted instruction at Palau High School has been implemented with grant support of a multimedia center and teacher training in computer technology.
  - ✓ Professional development programs have been provided to teachers and counselors at Palau High School to upgrade their instructional delivery capacities.
  - ✓ A website for the Ministry of Education has been developed with the support of the grant program. Information about the ministry and its programs as well as other information can now be accessed through the Internet at URL - [www.palaunet.net](http://www.palaunet.net).
  - ✓ A Palauan cultural profile CD-ROM has been completed and distributed to teachers as an instructional material in Palauan and social studies for all schools in Palau.
  - ✓ Evaluation of major programs, such as technology programs, student testing programs, and curriculum alignment have been carried out with support from the grant program.
- \$197,795 21st Century Community Learning Centers Program - To help students who are struggling academically in school (sunset this year)
  - ✓ This program is the only program in Palau that provides learning centers, after-school programs, and tutoring services, especially for at-risk students.
  - ✓ Six community learning centers have been established in six schools, including the only public high school in Palau.
  - ✓ One hour a day at the learning centers was devoted to assisting students with their homework.
  - ✓ At the community learning centers, tutoring services in math, English, and science were conducted for the first time at six schools for students who needed help in those subject areas.
  - ✓ Initial analysis of test results in math and English shows academic improvement of students in the program.
  - ✓ Students participated in recreational and cultural activities offered after school at the six learning centers for enhancement of their social, cultural, and interpersonal skills.
  - ✓ Students behavior as well as their attendance in class have improved.
  - ✓ Parents are benefitting from the program through their participation in workshops that provide training in computer basic skills, by helping their children with their homework in reading and math, by handling discipline issues, and through their participation in students' activities.
- \$120,000 Pacific Vocational Education Improvement Program - To strengthen vocational program at Palau High School
  - ✓ Palau High School students were provided assistance in preparing for their career practicum and activities and were placed at the local business establishment for on-site, work-based learning experiences.
  - ✓ Through grant program support, Palau High School students were able to complete their projects, which were displayed during the recent Education Awareness Week. Products on display included wood work such as cabinets, bookshelves, and dressers; agricultural produce like vegetables and ornamental plants; repaired engines and automobiles, research subjects and information system products.
  - ✓ Initial discussion have been held between Palau High School and Palau Community College on alignment of academic courses at the two institutions.

(continue on Page 27)

**(JFK) Kayangel Elementary School**  
**Built in 1965, renovated in 1973**

**Brief School history**

Kayangel State is isolated with several miles of water separating it from the main island of Babeldaob. The distance is far and treacherous which is not ideal for the children to commute. The school was built in 1965 to accommodate the students residing on the island. Before the school was built, students were sent off to school on Babeldaob. When classes first began in Kayangel the students were taking classes in the Bai. The people of Kayangel gathered to build the school for their children. Presently, there is approximately 40 homes in Kayangel with a little over 100 people residing on the island. Kayangel students enjoy lunch programs, computer classes and will soon enjoy all the benefits of technology including internet and e-mail. The Ministry of Education has worked hard to ensure that students in outer isolated islands get similar educational programs as the students on Koror.

**School Site**

- Lot No: 394 & 396; Land Name: Bas
- Owners by Court Judgment: Ikela Delkuu & Thomas Obak
- Certificate of Title was issued on January 8, 2002 to Thomas Obak, Mutsuo Delkuu, Isimang Bandarii and Johnson Bandarii.
- Lot Size: 3,947 square meters A quitclaim deed between on June 12, 1963 allows the government to use the property for school purposes only. Should it cease to use the property it will revert back to the rightful owners. The deed was executed by Rdechur and signed by all the Kayangel chiefs.
- Owner Thomas Obak now seeks payment from MOE for use of the property.

**School Information**

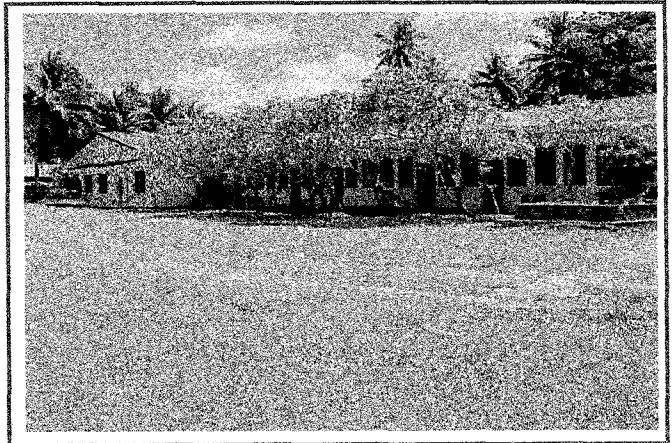
- Kayangel Elementary School has only 1 building which connects to the cafeteria. The building contains 8 class size rooms in which one is used as the library and another one is the office.
- The average size of the classrooms is about 8 x 30 and the average class size is 5 students.
- There is a total of 28 students at the school with 16 boys and 12 girls being taught by 5 teachers.

**Classroom Tech: Student Tech ratio**

Computers	5	6 to 1
Printers	1	29 to 1
Overhead projector	1	for teachers only
Oscillating fans	10	each classroom
Others	3	teachers only



*JFK Kayangel Elementary School*



**Present & Past Principals**

	<i>Years</i>
1. Miriam Wattas	1999-present
2. Hence Takawo	
3. Yusim Blesam	
4. Thomas Ermang	
5. Helbert Fritz	
6. Hiroshi Koshiba	
7. David Ngiratrang	

**Teacher Certification**

<i>Highest Education</i>	<i>number</i>
• High School	4
• Degree (AA or AS)	1
• Degree (BA or BS)	1

**Budget Summary**

• Personnel Cost	\$69,896
• Supplies	\$1,192
• Average Annual Budget	\$71,088

**Accomplishments**

- I. Teacher
  1. Teacher Assesment
  2. Principal attended special Ed. training in Hawaii.
  3. Vivian Eledui was nominated to Employee of the Year
- II. Students
  1. Soccer Tournament in Ngaremlengui
  2. Clean around island for Education Awareness Week
- III. Facilities
  1. Renovation of Roof and Paint around building
  2. New tile in the kitchen
  3. fans installed in classrooms



# Ngarchelong Elementary School

## Established in 1947 and rebuilt in 1964

### Brief School History

Ngarchelong Elementary School started in 1947 in Yebong hamlet in Ngarchelong. At that time Ngarchelong did not have facilities for school so the classes were held in public bai for grades 1 to 6 only. Mr. Imetengel was the first principal and some of the first teachers included Oikang Sebastian, Rechucher Tarimel and Towai Mochesar. Some of the first students included Risong, Dirrakerdeu, Yasue and others. The classes concentrated on English and sports. Some of the sports played included athletics, tug, and dodge ball. The students brought their own lunch and stayed in school from 8:00 a.m. to about 3:00 p.m. in the afternoon. In 1953 the school moved to Bai ra Mengellang where it was centrally located and accommodated all the students in Ngarchelong and even some from Choll. In 1964, the Ngarchelong Elementary School was built in its present site.

### School Site

- TD. Lot No. 1101;
- Land Name: Chebchab, In Mengellang Hamlet in Ngarchelong
- Lot Size: 150,189 square meters
- On January 24, 2000 the Land Court of the Republic of Palau determined that the property in Ngarchelong is the property of the Palau National Government in fee simple. The Land Court issued new lot numbers to the property which are 14-1137 and 15-1137 as shown on BLS Cadastral worksheet No. 14 & 15.

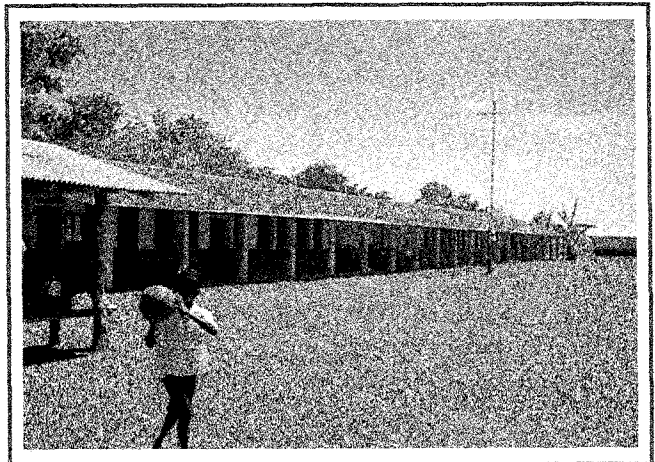
### School Information

- Ngarchelong Elementary School consists of three buildings including the school building, the cafeteria and the restroom.
- The classroom building houses 8 classrooms with average size of 19 x 30, a library, a computer lab and the school office.
- The cafeteria accommodates 100 students.
- The total number of students is 79 with 38 girls and 41 boys.
- There are 16 teachers and staff including the principal working at the school.

### Classroom & Office Tech: Student/tech ratio

Computers	8	10 to 1
Printers	1	79 to 1
Copiers	2	for teachers use
VCR	1	for teachers use
Other School Tech Aid	2	for teachers only

### Ngarchelong Elementary School



### Present & Past Principals

	<i>Years</i>
7. Philip Haruo	2000 - Present
6. Osisang Tarkong	1999-2000
5. Harper Skang	1996 - 1999
4. David Ngaratrang	1964 - 1996
3. Oikang Sebastian	1952 - 1963
2. Rechucher Tarimel	1946 - 1952
1. Imetengel Ong ranger	1945 - 1946

### Teacher Certification

<i>Highest Education</i>	<i>number</i>
• High School	5
• Degree (AA or AS)	3
• Degree (BA or BS)	2

### Budget Summary

• Personnel Cost	148,202.00
• Supplies	\$2,925
• Total	\$151,127

### Accomplishments

#### I. Teachers

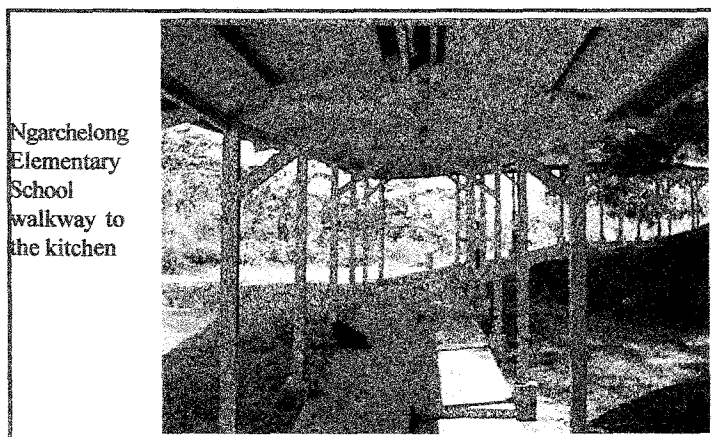
1. PREL Workshop for all teachers in Math & Science
2. Jeanna Immanuel was nominated for Prel Star Program
3. 21st Cent. Prog. allowed school to hire local to help at risk kids.
4. Tay Sunannon, PC helps with science and English

#### II. Students

1. 7 selected by Coral Reef for art display in upcoming calendar
2. After hours (2 hours) computer literacy
3. WIA to hire graduates to help struggling students during summer.

#### III. Facilities

1. New roof completed
2. New doors to be installed
3. New phone line for computers
4. Free Bus maintenance by former Governor.



Ngarchelong  
Elementary  
School  
walkway to  
the kitchen

## Ngaraard Elementary School

### Established in 1947; Rebuilt in 1963

#### Brief School History

Ngaraard Elementary School began in 1947 or shortly after the end of the second World War. The school officials used the old Japanese school building seen in the picture on the right. Students came from as far as Kayangel, Ngiwal and Ngarchelong to attend school in Ngaraard. Most of those who could not commute daily stayed with relatives in Ngaraard and attended school. Some of the first students were Pedro Besebes, Kalisto Renguul, Robert Tochi, Kyoko Kloulubak, Katarina Blaluk, Gabriel Arbedul, Mechelins Tmakeung and Natsko Renguul. The students learned English, Math, Science and Social Studies. The students brought their own lunch and stayed late participating in Physical Education programs.

#### School Site

Lot No: Not Yet Determined because it covers 5 claimed lots.

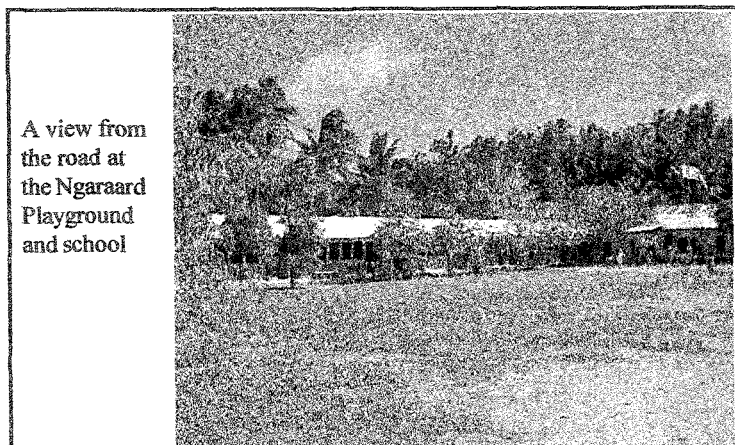
The school campus covers several lots and all lots are being claimed by individuals. The Ngaraard Elementary School site has been divided into five sections based on the number of claims on the property. Area A is claimed by Blailes; Area B is claimed by Ngirudil; Area C is claimed by Ngiramechei; Area D is claimed by Beches; and Area E is claimed by Rdialul. The case is still pending before the Land Court. The PPLA is a claimant on behalf of the government and Ngaraard State for all five properties under dispute. So far, there has been no resolution to the case.

#### School Information:

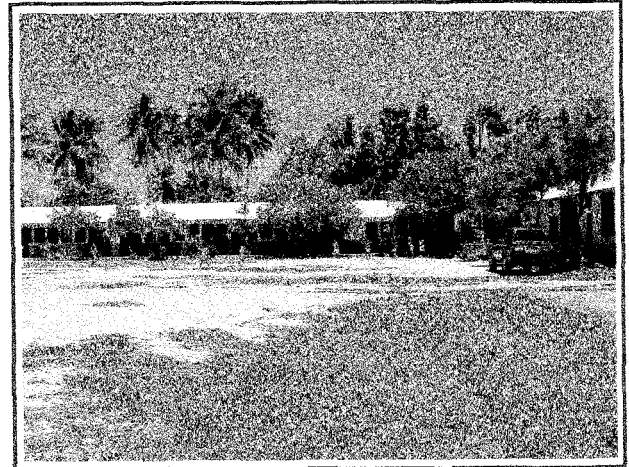
- Ngaraard Elementary School consists of 3 buildings including a benjo for boys and girls.
- The total area of the classrooms is 43,200 sq. ft. covering 8 classrooms with the average size of 20' x 30'. The school also has a library and a computer lab.
- The total number of students 35 being instructed by 8 teachers.
- There are additional 5 staffs working at the school.
- The school is administered by a principal. The teacher student ration is 1 to 5.

#### Classroom & Office Tech: Student/tech ratio

Computers	5	2 to 1; 5 to 8 grade only
Printers	1	5 to 1
copiers	1	Used by teachers only
TV	2	Used by teachers & students
Others	3	for teachers use only



#### Ngaraard Elementary School



#### Present & Past Principals

	<i>Years</i>
7. Herman Orak	2000-
present	
6. Kalisto Manahan	1996-2000
5. Robert Tochi	1977-1996
4. Yanangi Matul	1960-1977
3. Besebes Osarch	1954-1960
2. Ngirmerkur Mechaet	1950-1954

#### Teacher Certification

<i>Highest Education</i>	<i>number</i>
• High School	5
• Degree (AA or AS)	2
• Degree (BA or BS)	2

#### Annual Budget Summary

• Personnel Cost	\$138,754
• Supplies	\$2,331.00
• Total	\$141,085

#### Accomplishments

##### I. Teachers

1. All teachers completed training in lesson planning.
2. All teachers completed database training.
3. All teachers and staff took computer training
4. All teachers and staff attended PIBBA conference
5. 2 teachers attended science workshop in Koror.
6. Local training for 5 teachers and 5 community workers.

##### II. Students

1. Lavina Besebes and Mckinstein Rivera participated in the Aids Essay Contest.

##### III. Facilities

1. Library was combined with computer lab.
2. Special Education classroom was tiled and air con.
3. Air condition installed in first grade classroom.
4. New chairs, tables and air condition installed in teachers office.
5. 10 new lab tops for school use.
6. New tables for the kitchen.



## Ngiwal Elementary School Established in 1948

### Brief School History

Ngiwal elementary school started in 1948. At that time they had teachers and a Head Master (equivalent to principal). The first Head Master of the school was Ongklungel Rimirch.

When school began there was no facility to hold classes so the students took classes in the community bai until school was completed. The members of the community joined forces to complete the first school building which was located at the present school site.

There were about 70 students attending school and they were divided into groupings (perhaps grades as we consider them now) according to their age. There were only two teachers at the time, Ongklungel Rimirch and Marino Ongklungel.

The students learned alphabets, basic reading, Palauan reading, math, science, agriculture and art skills. The student also played different sports for PE classes. They played dodge ball (stobor), wrestling, athletics and softball.

The students in Ngiwal took active participation in agriculture and were allowed to learn basic farming skills usually working with the elders of the community. Being a small community with houses being very close to the school, the students were allowed to go home for lunch and returned to school after lunch. The present school building was built during the Navy Administration in the

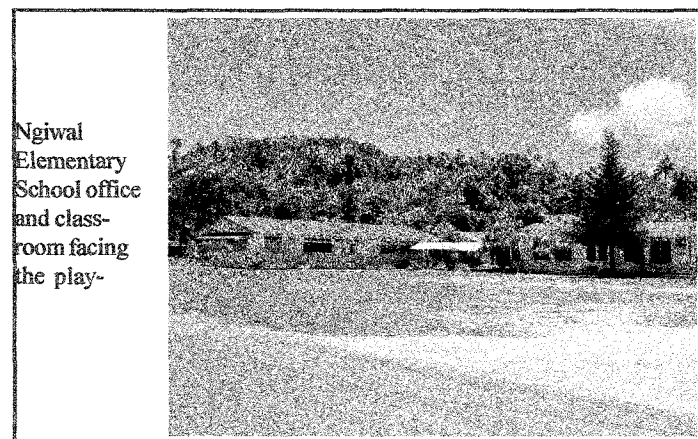
### School Site

- Lot No. 62 & 63, the school site was bought from Eusevio N. Termeteet for \$5,808. The final payment was issued on April 26, 1977.

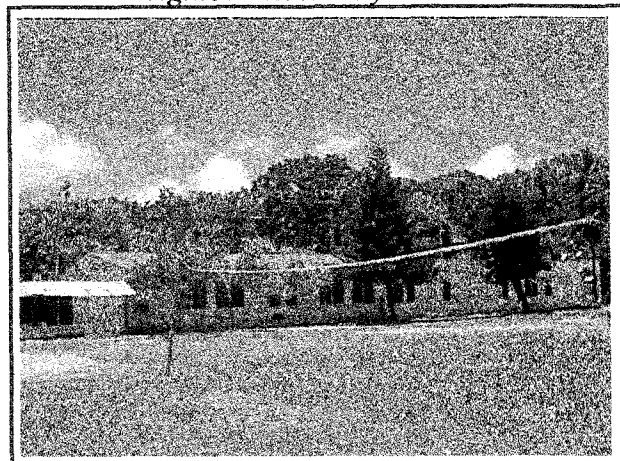
- There are several claims that encroach on the school site: Lot 61 claimed by Welloi; Lot 64 claimed by Eyol; Lot 65 claimed by Olkebai; Lot 70-1 claimed by Ilong; Lot 71-1 claimed by Ngiraibai for Uchesbai Lineage; and Lot 72-1 claimed by Ngiraibai as his individual property. These lots encroach on the outer edges of the west and south sides of the property. Their cases are still pending before the Land Court.

### Classroom & Office Tech: Student/tech ratio

Computers	9	4 to 1; all students
Copier	1	teachers use only
TV & VCR	1	35 to 1
Other equipments	0	for teachers use only



### Ngiwal Elementary School



### Present & Past Principals

	<i>Years</i>
7. Lorenza Olkeriil	1999-present
6. Jonathan Bultedaob	1992-1999
5. August Ngirameketii	1981-1992
4. Tulmau Kloteraol	1957-1981
3. Idip Tiobech	1956-1957
2. Keptot Arurang	1955-1956
1. Marino Ongelungel	1950-1955
1. Ongklungel Rimirch	1948-1949

### School Information

- Ngiwal Elementary School consists of four buildings. Two are classroom buildings while the other two are cafeteria and the restroom.

- The two classroom buildings houses six classrooms, a library, a computer lab and the school office. The average size for each room is 15 x 30.

- The school serves 35 students with 11 teachers and staff including the principal.

### Teacher Certification

<i>Highest Education</i>	<i>number</i>
• High School	4
• Degree (AA or AS)	2
• Degree (BA or BS)	2
• MA	1

### Budget Summary

• Personnel Cost	\$134,037
• Supplies and Materials	\$1,423
• Total	\$135,460

### Accomplishments

#### 1. Students

- All students obtained Social Security numbers by 9/25/02.
- Students began a school newsletter in October 2002.

#### 2. Teachers

- Teachers completed a parenthood workshop with parents.
- Hideky Takataro was nominated for Employee of the Year.

#### 3. Facilities

- Tin roof was replaced.
- Water catchment was installed.

# Melkeok Elementary School

Established in 1948; rebuilt in 1968

## Melkeok Elementary School

### Brief School History

The need for school in Melkeok was seen by Melkeok citizens as a priority. Immediately after the war, the people of Melkeok went to Peleliu where they obtained several quonset buildings which they brought to Melkeok. They built a two story building that housed four classrooms. They immediately began school utilizing those who came from the Japanese schools and learned Math and other skills that were taught during the Japanese time. The first classes that were taught were math, English, Island Family and Science. The students also learned Physical Education and played volleyball, softball, wrestling and athletics. There were several contract teachers who helped the school when it started. Tom Hale was the first contract teacher to arrive in Melkeok and taught English and other English related courses.

### School Site

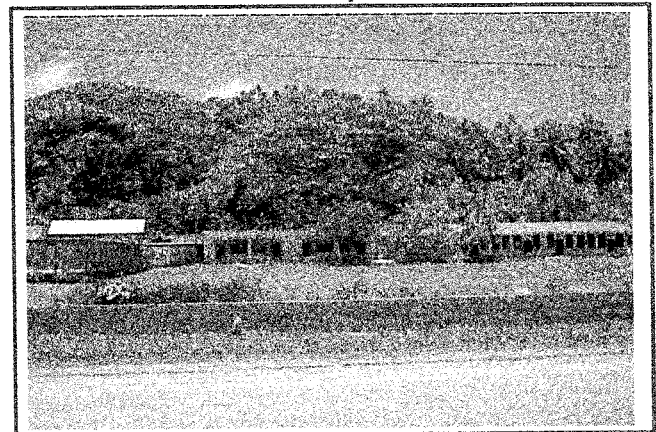
- Tochi Daichio Lot No. 390; Cadastral Lot No. 005 C 08.
- Containing an area of 23,420 sq. meters.
- A certificate of title was issued to the Government of the Trust Territory and its heirs. However, a provision was inserted that in the event the government, school or education is relocated and ceases to use the property for education purposes, the rights to the property shall be vested in Baulbei clan. In such an event, the Government of the Trust Territory and its heirs shall have no authority over the said property.

### School Information

- Melkeok Elementary School consists of 2 buildings; One is the classroom building and the other is a cafeteria.
- The classroom building houses 8 classrooms with an average size of 15 x 30. It also houses the office and computer lab.
- The school has a total of 43 students with 22 boys and 21 girls.
- There are 17 teachers and staff working at the school including the principal.

### Classroom & Office Tech: Student/tech ratio

Computers	8	5 to 1, all students
Printers	1	For all students
Copier	1	teachers use
typewriter	1	teachers use
Others	2	teachers only



### Present & Past Principals

	Years
13. Magaria Tellei	1999-present
12. Ngirarois Mira	1982-1999
11. Therodore Rengulbai	1980-1982
10. Adolf Ngirakelau	1979-1980
9. Ngirarois Mira	1977-1979
8. Erica Elechuus	1970-1977
7. Peter Elechuus	1968-1970
6. Akemi Erungel	
5. Ngiratkaki Mekreos	
4. Peter Elechuus	
3. Skang Mekreos	
2. Maech Ruluked	
1. Rengulbai Ngeburch	

### Teacher Certification

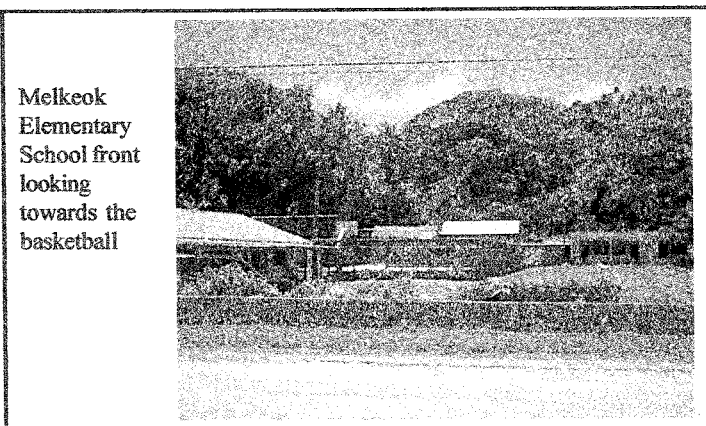
Highest Education	number
• High School	9
• Degree (AA or AS)	1
• Degree (BA or BS)	0

### Budget Summary

• Personnel Cost:	\$117,782
• Supplies	\$1,671
• Total	\$119,443

### Accomplishments

1. New covered walkway to the cafeteria and also serves as bleachers for the basketball court.
2. New roof for the classrooms and the benjo was renovated.
3. Cafeteria was tiled with ceramic tile and new dining tables were acquired.
4. Oscillating fans were installed in all the classrooms.
5. New water tanks installed
6. Greenhouse built and small nursery for mahogany trees.
7. Teachers have taken several workshops on computers, health and science.



Melkeok Elementary School front looking towards the basketball

## Ngchesar Elementary School

### Established in 1947; Rebuilt in 1961

#### Brief School History

School began immediately after the war in 1945. Students would gather at homes to study and interact with other students. Some students trekked the jungle in the morning to Melkeok to attend school and would return in the evening. Most of the students gathered at Mr. Ngiraingelnguul's house until a school building was built. The original school site was in Ngerkesou where the school was erected on top of old Japanese foundations. The school began with 4 subjects and school was an all day event ending with physical education. Mr. Ngiraitpang Kolbas was the first Principal and the teachers were Anastacio Ngiraingelnguul, Olkeriil Minor and Roduk Tem. The four major courses were Math, English, Science and Social Studies. The sports played during physical education were baseball, volleyball, wrestling and track and field.

#### School Site

Lot No. 40713; Area is 8,409.69 square meters.

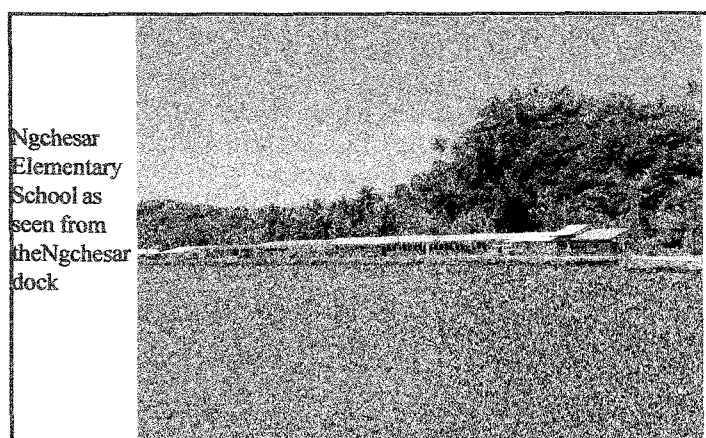
This area was retained by the government based on the quitclaim deed dated December 6, 1982. The school is situated on a filled in land and most probably would be the property of the state. No clan, lineage or individual has indicated nor filed any claims against the property on which the school is situated which is on the shoreline.

#### Teacher Certification

Highest Education	number
• High School	7
• Degree (AA or AS)	2
• Degree (BA or BS)	2

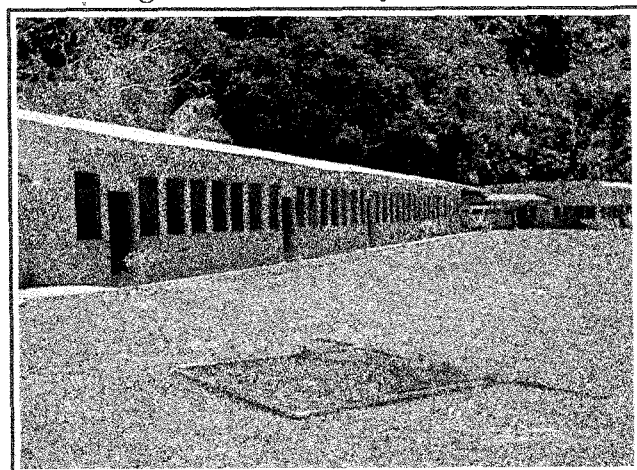
#### Classroom & Office Tech: Student/tech ratio

Computers	10	5 students to 1 computer
Typewriters		Only 1 working
Copiers	1	used by teachers only
TV	1	broken
Boom Box	?	
Overhead projector	2	teachers only
Fax & Telephone	1	



Ngchesar Elementary School as seen from the Ngchesar dock

#### Ngchesar Elementary School



#### Present & Past Principals

	Years
7. Bill Recheluul	1999-present
6. Gabriel Wasisang	1997-1999
5. Justina Remarui	
4. Heroncio Spesungel	
3. Emil Remarui	
2. Roduk Tem	
1. Ngiraitpang Kolbas	

#### School Information

- Ngchesar Elementary School has three buildings not counting the restrooms. Two are school buildings and one is the cafeteria.
- The school buildings houses the 7 classrooms (this year there is no 5th grade) with an average size of 20 x 30.
- Included in the classroom buildings are the computer lab and the library.
- There is a total of 48 students with 27 boys and 21 girls.
- The school has 17 teachers and staff including the principal managing and teaching in the school.

#### Budget Summary

• Personnel Cost:	\$136,655
• Supplies:	\$1,902
• Total	\$138,557

#### Accomplishments

##### I. Teachers

1. Completed Classroom management, teaching strategies methods, career guidance and palauan workshops.
2. US Peace Corps volunteer to help the English classes
3. JOCV to help with math classes.

##### II. Students

1. Won two age groups in the Education Awareness Week
2. Tobacco Free Soccer tournament

##### III. Facilities

1. Septic tank for kitchen fixed.
2. New tables and chairs for students & teachers.

## Airai Elementary School

### Established in 1964; Rebuilt in 1992

#### Brief School History

Airai Elementary School actually began long before the date of establishment in 1964. Immediately after the war in 1945 school began on or about September 1945. The students used the old Japanese Communications building located in Ked, Airai as classrooms and began teaching students from grades 1 to 6. The teachers did not have textbooks or any teaching materials and taught out of what they knew or learned from the Japanese schools. Some of the courses taught at the time were alphabets, basic math, English. School was an all day activity as students started school at 8:00 a.m. and finished at 4:00 p.m. They brought their own lunches to school. The students in Airai were fortunate because they discovered a Japanese warehouse in Yamato that was full of different kind of papers used and took them to the school along with pencils, ink, pens and other school materials.

Some of the first students in Airai Elementary School were Father Felix Yaoch, Dr. Yuji Mesubed, Tatsuo Kamingaksang, Ngraboi Mobil, Taro Ngiraingas, Yukie Yano, Mengeriei Eungel and Ucheliei Ngiralmu. Some of the teachers who worked at that time were Mr. Ngruchelbad Uchel, Urimch Obak, Wilhelm Rengiil, Teriong Beouch and Ngemelas Demei. The first principal at that time was Polloi Ngirailals.

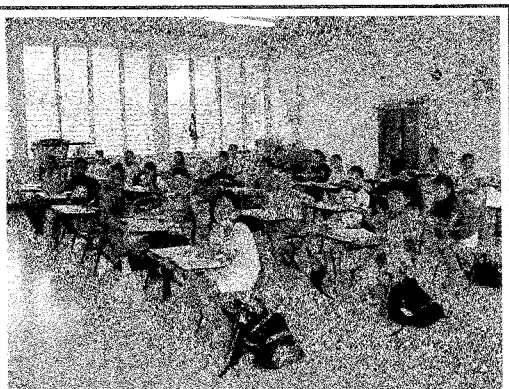
#### School Site

The property where the school sits is 43,309 sq. m. This property is without a lot number because Airai does not have a tochi daichio record and it has not been surveyed. There are two claimants of this property along with the government (Airai State). The two claimants are Roman Tmetuchl (his heirs) and Rosania Masters. The case is still pending before the Land Court.

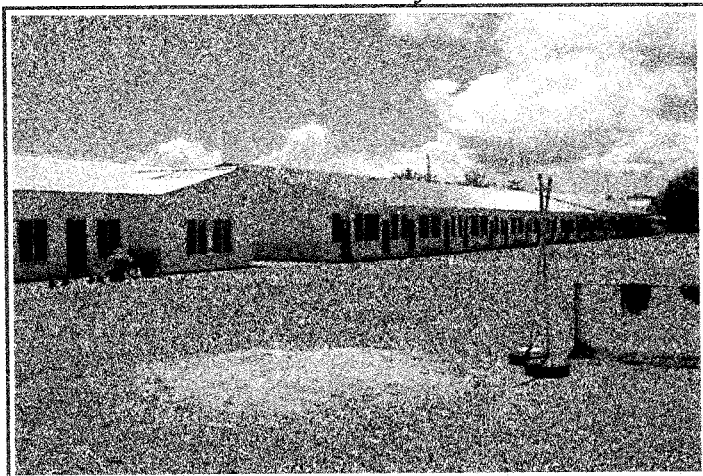
#### School Information

- Airai Elementary School has 4 buildings but only one used as classroom building consisting of 9 classrooms with an average size of 800 sq. ft.
- There are 224 students with 106 girls and 118 boys. The average class size is 25.
- There are 11 teachers including 1 PE teacher and 1 Special Education teacher. There are 4 staff working a principal making a total of 16 workers.
- Other facilities include a cafeteria, office, restrooms and a playground.

Airai  
Students in  
Class



#### Airai Elementary School



#### Present & Past principals

	<i>years</i>
7 & 9. Omoto Rengiil	1970-1972 & 1989 - present
8. Valentino Ngirkiklang	1972-1989
6. Naruo	1966-1970
5. Anita Rechirei	1960-1965
4. Jonathan Meluat	1956-1960
3. Teriong Beouch	1953-1956
2. Ngruchelbad Uchel	1949-1953
1. Ngirailals Polloi	1945-1949

#### Classroom & Office Tech; student/tech ratio

Computers	15	15 to 1
Printers	1	All students
Copiers	3	teachers use only
TV & VCR	3	Used on computer lab
Other Equipments	1	teachers use only

#### Teacher Certification

<i>Highest Education</i>	<i>Number</i>
High School	5
Degree (AA or AS)	3
Degree (BA or BS)	1
MA	1
Others (Certificate)	2

#### Estimated Annual Budget

• Personnel Cost	\$145,710
• Supplies	\$7,892
• Total	\$153,602

#### Accomplishments

1. Newly painted building
2. New roof installed
3. Water tanks installed
4. Oscillating fans were purchased and used in student Center and Cafeteria.



# **Ngardmau Elementary School** **Established in 1945; Rebuilt in 1966**

## **Brief School History**

Ngardmau Elementary School was built in 1966. It was built from the old Japanese building, which was used during the Japanese period to teach Japanese students who lived in Ngardmau. The school during that time was not open to Palauan students but for the children of Japanese who worked the mines. After the war the buildings were turned into an intermediate school which taught grades 1 to 6. The very first grade class had 152 students and was rather large because many older kids who had never been in school were enrolled in first grade.

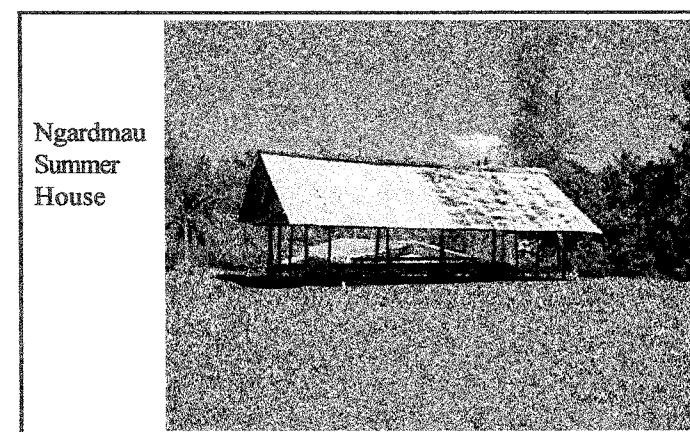
In 1965 Mr. Viteralli began plans to reconstruct the school making it an elementary school. He used grant money from the U.S. to purchase materials and the people of Ngardmau built the school. The first principal was Mr. Ignacio Ngiraiwet and some of the teachers who worked there were Mr. Noboru Ueda, Beketaut Towai, Vincent Beches, Agnes Wasisang, Ngirur Tkel, Elizabeth Ngirmekur and Charles Melus. Mr. Ed Klinburg a Peace Corp volunteer taught the English related subjects at the school.

## **School Site**

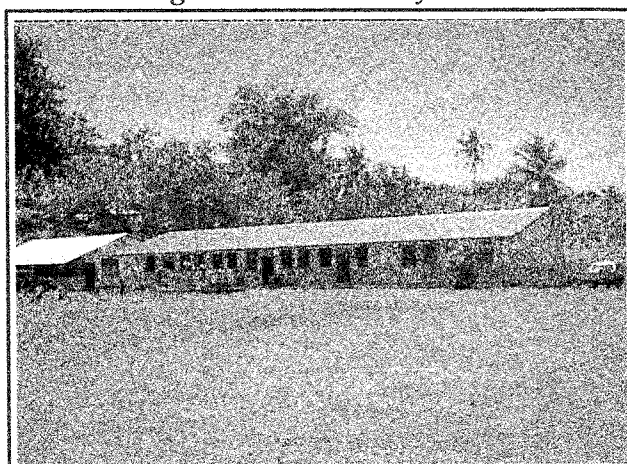
- Temporary Lot No: 32-3041
- Land Name: Ngesol, School Site
- Lot Size: 6,019 square meters
- On October 14, 1999 the Land Court issued a Determination of Ownership in the name of Ongalek ra Uldekel. The property was placed under the administration of the Governor of Ngardmau State and until such time as the government will stop using the property for school purposes it will revert back to the Ongalek ra Uldekel.

## **Classroom & Office Tech: Student/tech ratio**

Computers	6	10 to 1
Printers	1	61 to 1
Copiers	1	teachers only
TV & VCR	1	teachers only
Other Equipments	1	



## *Ngardmau Elementary School*



## **Present & Past Principals**

	<b>Years</b>
6. Ananias Ngiraiwet	1996 - present
5. Charles Melus	1992 - 1996
4. Beketaut Towai	1984 - 1991
3. Ignacio Ngiraiwet	1951 - 1984
2. Tolngii Ngirngedengoll	1950
1. Rechurcher Koske	1949

## **School Information**

- The school has four buildings with only one used as classroom building. The other buildings are cafeteria, office and restrooms. The classroom building has 8 classrooms with an average size of 600 sq. feet.
- There are 61 students for an average of 8 students per class.
- There are 8 teachers including a Special Education teacher and 2 staff under the supervision of a principal.

## **Teacher Certification**

<b>Highest Education</b>	<b>Number</b>
• High School	4
• Degree (AA or AS)	3
• Degree (BA or BS)	2

## **Budget Summary**

• Personnel Cost:	\$115,924
• Supplies:	\$1,687.00
• Total	\$117,611

## **Accomplishments**

1. New roof for main school building
2. Complete renovation for kitchen: New roof & ceramic tile
3. Two new restroom, one flush toilet and one outhouse
4. Resource Center is renovated with new floor (tile)
5. New partitions that seal the classrooms from unwanted disturbance from other classes.
6. Computers are equipped with e-mail and data transfer from school to main office.
7. All teachers have been trained to use the computers.

## Ngaremlengui Elementary School

### Established in 1945; Built in 1947; New School was built in 1996

#### Brief School History

Ngaremlengui Elementary School was established immediately after the war in 1945. The students attended school at Bai ra Blisang in Imeong because the village did not have a school building. The grades went from first to fifth and there were about 300 students going to school. In 1946, the villagers decided to build a permanent school building for the children. The youth group and several old people went to the rock islands where they cut iron wood and brought it to Koror where the wood was cut by the Ngaratirou. The Ngaremlengui youth brought the wood to Ngaremlengui by swimming and pushing the wood. It took 2 days to bring the wood to Ngaremlengui. The school was built at the old school site (across from the present school site to the south) under the supervision of Yamasaki Rengiil (Iechadremetengel). At about the time the school was completed, the people of Peleliu who were in Ngaremlengui to escape the war, returned to Peleliu reducing the number of students from about 300 to about 180. The school taught Math, Reading and learning ABC's. The students played softball, dodgeball, tug and wrestling. In 1947, the Navy brought sports equipments to the schools and students began to play organized sports. The students attended school from 8:00 a.m. to about 2:00 p.m. and brought their own lunch.

Some of the teachers who taught the first classes were Rekemesik Sulial, Olbangel Rengiil, Kimiko Kyota, Riuch Sulial, Deureng Mengesbuul and Taurengel Otobed.

#### School Site

- The new school in Ngaremlengui is situated on a land called Kurand which is lot No. 003 K 05 or tochi daichio lot no. 501. This land has been determined by the Land Claims Hearing Office as property of the National Government with PPLA as its trustee. The decision was issued on March 18, 1994.
- The school campus contains an area of 8,094 square meters.

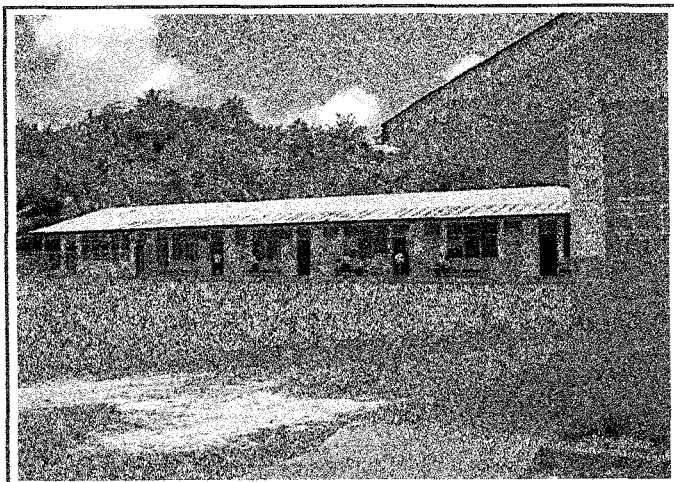
#### School Information

- Ngaremlengui has 2 main buildings, with the school building in an L-shape with all classrooms, computer lab, library and school office in it.
- There are 8 classrooms with an average size of 596 per classroom.
- There are 65 students with 30 girls and 35 boys.
- There are 10 teachers including 1 special education teacher.
- There are 3 other staff working at the school.
- Currently, the school is recruiting for a new principal because the last principal retired.

#### Classroom & Office Tech: Student/Tech Ratio

Computers	8	8 to 1
Copier	1	teachers only
Printers	2	24 to 1
TV & VCR	1	teachers only
Others	3	

#### Ngaremlengui Elementary School



#### Present & Past Principals

	<i>Years</i>
6. Patricia Franz	2003-present
5. Rengiil Madalarak	1999 to 2003
4. Amboi Franz	
3. Renguul Ngringeungel	
2. Taurengel Otobed	
1. Telchalb	

#### Teacher Certification Highest Education

	<i>Number</i>
• High School	3
• Degree (AA or AS)	4
• Degree (BA or BS)	3
• Others (Certificate)	1

#### Estimated Annual Budget

• Personnel	\$147,984
• Supplies	\$2,529
• Total	\$150,513

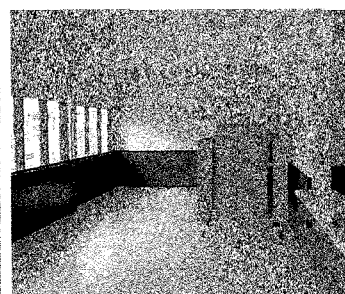
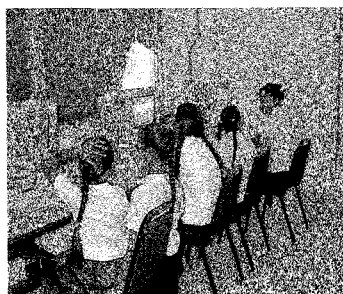
#### Accomplishments

##### I. Facilities

1. Kitchen renovation completed
2. Playground hosted the Kiukl school soccer tourney

##### II. Students

1. Successfully participated in kiukl soccer tournament
2. Participate in local league in basketball and softball.





# Ibobang Elementary School

## Established in 1975, built in 1978

### Brief School History

Ibobang Elementary School was built to accommodate the students who lived in Ibobang and attended the Ngatpang Elementary School. In 1975 when Belau Modekngai School opened, several families who lived in Ibobang had children who were in elementary school attending Ngatpang Elementary School. At that time the state of Ngatpang did not have roads connecting to Ibobang. The students were transported to Ngatpang by boat every morning and after school from Monday to Friday. The families in Ibobang soon realized that transportation was a problem because of the tide in Palau. They made a request to William Tabelual who was then the Director of Education to allow the students in Ibobang to take classes in Ibobang. They requested assistance from Pasquana Tutii who was a teacher in Meyuns Elementary School to volunteer to teach in Ibobang.

The school began in the cafeteria of the Modekngai Church with four classes. When some of the buildings in Ibobang were renovated, the old materials were taken and the present school was built. Eventually the grades increased from 1st to 8th when the students who first attended the school grew. The school still did not have a principal but had a head teacher and several regular teachers. Elin Rebluud who is a teacher in Ibobang Elementary School was one of the first students in Ibobang when it started. Mr. Johnson Emesiochl is the first and only principal of Ibobang School Site

- Ibobang Elementary School is part of the property containing a large portion of Ngerdubech hamlet. The Cadastral Lot No. is 021 L 01 and it contains an area of 642,231 square meters. The entire area has been determined by the Land Court as property of Ingilai Clan.

- The Certificate of Title was issued on August 27, 2001 by Judge

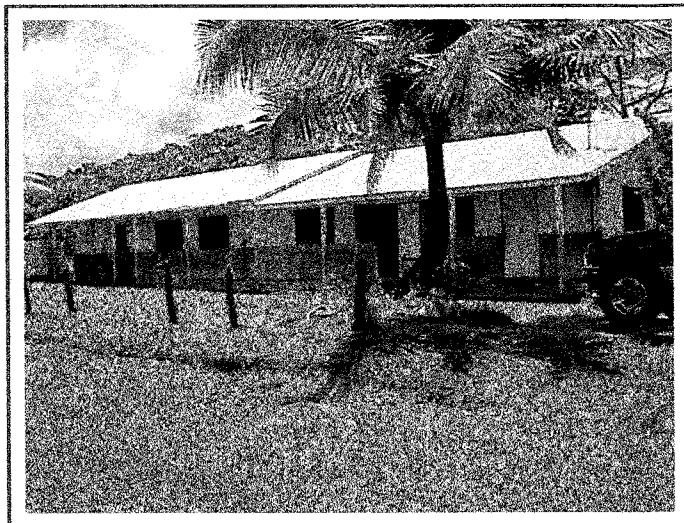
### School Information

- The Ibobang Elementary School consists of three buildings. There is the main school building, the cafeteria and the office/library building.
- The classroom building has 4 classrooms with an average size of 256 square feet. There are 23 students with 12 girls and 11 boys. The average class size is 3 students per class.
- There are 5 teachers including 1 Special Education Teacher and 4 staff working at the school

### Classroom & Office Tech: Student Tech ratio

Computers	5	5 to 1
Printers	2	12 to 1
Copier	1	broken
Others	3	for teachers only

### Ibobang Elementary School



### Present & Past principals

	<i>Years</i>
1. Johnson Emesiochl	1978 to present

### Teacher Certification

<i>Highest Education</i>	<i>Number</i>
• High School	6
• Degree (BA or BS)	1

### Estimated Annual Budget

Personnel Cost	\$81,121
Supplies	\$1,027
Total	\$82,148

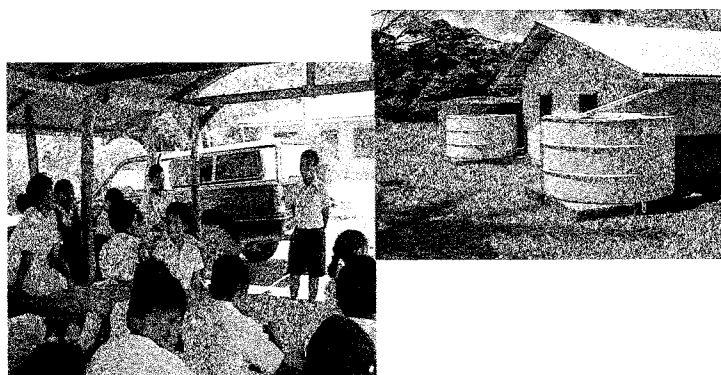
### Accomplishments

#### I. Teachers

- Completed a computer training and are now able to use e-mail, internet, and perform tasks using publisher and appleworks.

#### II. Facilities

- Installation of new water tanks.



# Aimeliik Elementary School

## Established in 1948; Rebuilt in 1960

### Brief School History

Aimeliik Elementary School was established in 1948. This was three years after the war and many of the people of Aimeliik had returned home to their state. The first principal was Mr. Rechemiich and there were about 60 student at the time. The Aimeliik school was housed at Bai Era Keai which was located at Ngerkeai. Students had to walk from their villages the the wee hours of the morning, many times it would still be dark in order for them to reach school on time. The students learned Math, Alphabets, Reading and Social Studies. They played sports such as dodgeball and baseball. Some of the first students were the late Delegate Steve Umetaro, Daniel Kukiut and others. Some fo the first teachers who worked at the school were Rengjil Ederbai and Masami Siksei. Few years later the students were able to move into the first school building which was built by Blelai Tomei at the present site.

### School Site

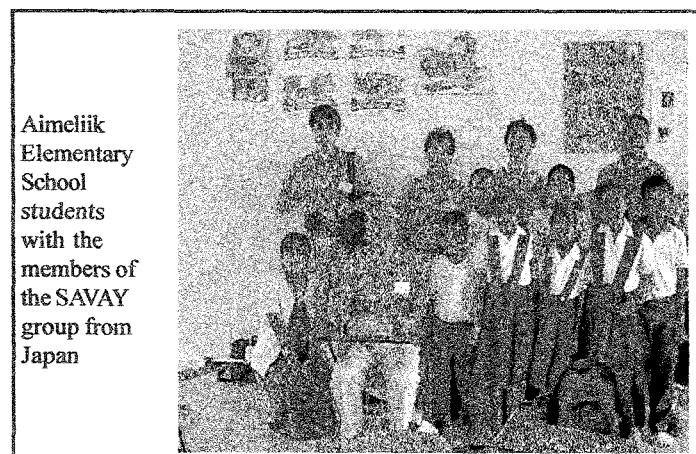
The property where the school sits on is divided into three portions. All three were determined as properties of Adelbai Sekii of Aimeliik State. Adelbai Sekii sold the properties to Vice-President Sandra Pierantozzi. A Decision was issued by the Land Court on March 20, 2001 affirming the sale and awarding the lands to Sandra Pierantozzi. Aimeliik State Government and the National Government have not taken any action with regards to the land issue in Aimeliik State. The total land area is 644 acres or 300 tsubo as identified as Klsobel or part thereof.

### Teacher Certification

<i>Highest Education</i>	<i>number</i>
• High School	6
• Degree AA or AS	2
• Degree BA or BS	2
• MA	1

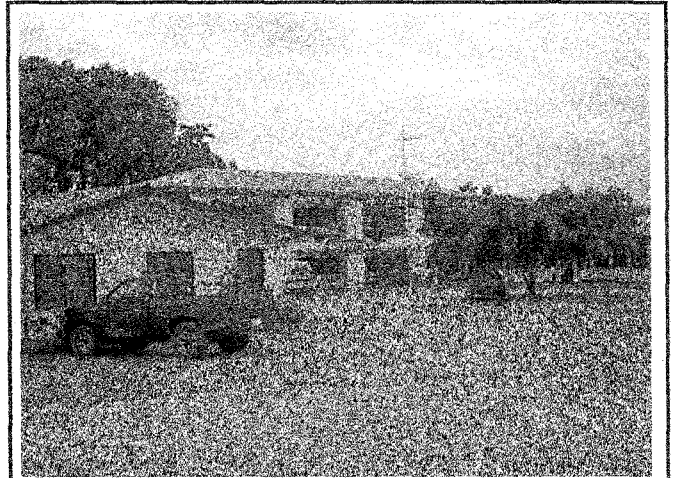
### Classroom & Office Tech: Student/tech ratio

Computers	6	13 to 1; All students
Copier	2	For teachers only
TV	2	40 to 1
VCR	2	40 to 1
Printers	2	80 to 1
Other Equipment	4	40 to 1



Aimeliik Elementary School students with the members of the SAVAY group from Japan

### Entrance to Aimeliik Elementary School



### Present & Past Principals

	<i>Years</i>
8. Constantino Ngiraked	1999 - Present
7. Kalistus Ngirturong	1981 - 1999
6. Tem Obakerbau	1962 - 1981
5. Obichang Ngiratecheboet	
4. Masami Siksei	
3. Meruk Rengulbai	
2. Rengjil Ederbai	
1. Rechemiich	

### School Information

- Aimeliik Elemetnary School consists of four buildings with two being classroom buildings. The other two being office space and cafeteria.
- There are 8 classrooms with the average size of 740 sq. ft.
- They have a library and a computer lab that serve all students.
- There are almost twice as many boys as there are girls with 53 boys and 27 girls. There are 16 teachers and staff working at the school.
- The student teacher ration is 10 students to 1 teacher

### Budget Summary

• Personnel Cost:	\$153,451.00
• Supplies:	\$2,958.00
• Total Expenses	\$156,409.00

### Accomplishments

- I. Students
  1. Participated in regional soccer tourney in Koror
  2. 2 students arts were selected by PICRC for annual calendar
- II. Teachers
  1. Completed 2 Health & Science training
  2. Computer lab managers training
- III. Facilities
  1. Acquired Oscillating fans for classrooms
  2. Acquired tables for students & teachers
  3. Acquired 6 additional computers for students

## George B. Harris Elementary School

### Established in 1964

#### Brief School History

G.B. Harris elementary school was built in 1964 to help relieve the congestion of students at Koror Elementary School. The school was named after George B. Harris who worked as a member of the Land Registration Team in Palau. When Mr. Harris died, the executors of his will found out that he wanted to donate money to help schools in Koror, Palau. The money was sent to Palau and was used to complete the school and to purchase furnitures and supplies. Classes in Harris began in 1964 and students that attended KES who took classes at the Kebtot el Bai, which was used as KES annex, grades 1-6 were moved to Harris. Mr. Caleb Olegeriil became the first Principal of Harris Elementary School and stayed there until 1970. The students from the eastern part of Koror were encouraged to attend Harris and the school was increased from 1st to 8th grade. Mr. Olegeriil had great teachers working with him. They included Ms. Adelina Salii, Droteo Espangel, Omoto J. Rengiil, Erica Koshiba, Mariko Joseph, Felisa Ikesiil, Hermana Umetaro and Fermin Kebekol. Mr. Ray Buchey and Mr. Kanale were contract teachers working at Harris.

#### Real Property:

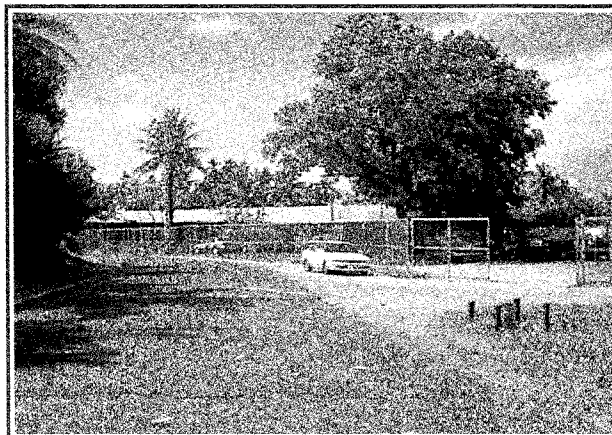
George B. Harris Elementary School has a total of 13,673 square meters of space accommodating 7 buildings and a small playing field. On April 4, 200 a Land Court decision split the property in the middle from North to South. The eastern portion of the property was awarded to William O. Wally, Jr. and Ms. Valentina Sukrad. Both are awarded as fee simple owners of the lot. The western portion of the G.B. Harris property was awarded to Terekieu clan under Wilhelm Rengiil who is the head of the clan. This means that G.B. Harris sits on two properties, one belonging to Terekieu clan and the other half belonging to William O. Wally, Jr. and Valentina Sukrad. There has been no action on any of the parties, which includes the government, as to how the school may continue to use the land or may acquire the land for permanent use as a school site.

#### School Information

- G.B. Harris has a total of 7 buildings housing 1 cafeteria and 24 classrooms including 2 computer labs, special education classroom and a library.
- The average classroom size is 843 sq. ft. with an average of 23 students per class being taught by 25 teachers, 3 special education teachers and two PE teachers.
- There are 40 teachers and staff working under a Principal and a Vice-Principal.
- There are 577 students with 287 girls and 290 boys.

#### Classroom & Office Tech:Student/Tech ratio

Computers	40	14 to 1 (all students)
Computers	2	Office use
Computers	3	Library
Laptop	1	Office use
Copiers	2	Office
Printers	5	2 (students) 2 (office) 1
TV	5	Students
Overhead Projector	2	Students
Digital Video Camera	2	Teachers
Digital Camera	2	Teachers
VCR	4	Students
PA System	2	Teachers



#### Present & Past Principals

	<i>Years</i>
6. Wicliff Emul	2000 - Present
5. Theodore Rengulbai	1993-2000
4. Hashida Kebekol	1973-1993
3. Omotto Rengiil	1972-1973
2. Hashida Kebekol	1970-1972
1. Kaleb Olegeriil	1964-1970

#### Teacher Certification (includes Principal & Vice-Principal)

<i>Highest Education</i>	<i>Number</i>
• High School	6
• Certificate	1
• Degree (AA or AS)	15
• Degree (BA or BS)	9

#### G.B. Harris Annual Budget

• Personnel Cost	\$402,179.00
• Supplies	\$20,473.00
• Total	\$422,652.00

#### Accomplishments

1. Student Accomplishment
  - a. Placed second in the spelling bee contest in Guam.
  - b. First place in Math Competiton in Education Awareness Week.
  - c. Exchange program with Miyagawa Elementary School in Japan.
  - d. Won 2nd and 3rd in Spelling Bee Contest.
2. Teachers Accomplishments
  - a. 2nd runner up Teacher of the Year
  - b. Mcauliff Receptient and trip to D.C.
  - c. Attendance in PEC and PIBBA Conferences
  - d. CPR Training
  - e. Attendance in Science Consortium in Saipan.

# Koror Elementary School

## Established in 1946; Rebuilt in 1969

### Brief School History

Koror Elementary School began almost immediately after the war in 1945. Students who attended the Japanese school but were scattered due to war returned to continue their studies. Most of the former Japanese students were students from what was called Kongakko which is located at the present Tire Shop next to the Sure Save Mart. When Koror started the first classroom buildings were located in the area behind the PDC building at the PCC wood and machine shop area. Classes only went from 1st to 6th grade with 7th to 9th being considered Intermediate School. Many of the first students believe that Mr. Tatsuo Adachi was the first principal of Koror. The School grew until most young people from Koror came to attend the school. The number began to crowd the facilities and students were moved to the Kehtot el Bai as K.E.S Annex. On or about 1962, plans to build another school to relieve the overcrowded classrooms began and in 1964 G.B. Harris was built and most students from T-dock all the way to Ngermid were relocated to G.B. Harris.

Koror continued to be the most populated school with students from Meyuns and all the other hamlets of Koror attending it. In 1967 Typhoon Sally destroyed all the classroom and virtually all school records. Students were required to take classes in several different places including the present Furusato, the Bureau of Lands and Surveys and some of the buildings that were not destroyed in the present PCC area (Then called Palau High School). The government (Trust Territory Government) immediately began plans for a New Koror Elementary School and in 1969 the present Koror Elementary School was completed.

### School Site

The present school site is part of the property that the government bought from Meriang clan. The total land area was 2,956 hectares but Koror is only within the fenced area above the road to Ngeseke. Therefore, the property where KES is located is now government property.

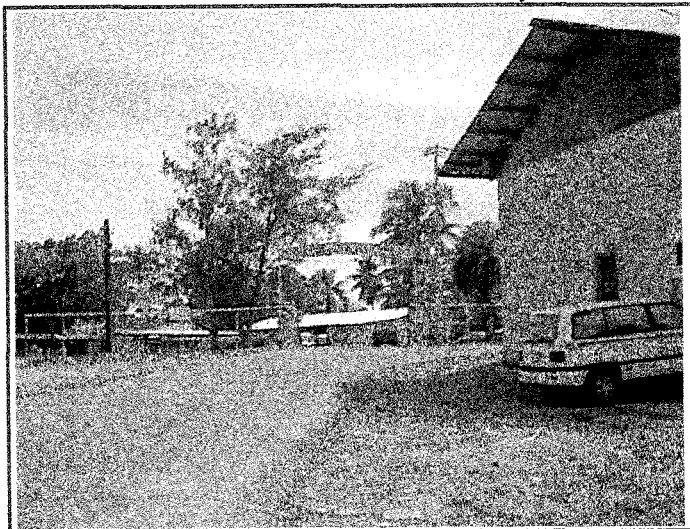
### School information

- Koror Elementary School is the largest school in Palau with 17 structures with 13 as classroom buildings that houses two computer labs, library, conference room, office, and a special education class.
- There are 29 classrooms with an average size of the classrooms is 850 sq. ft. with an average of 24 students per classroom.
- There are 31 classroom teachers, 3 Special Education teachers, and 2 PE teachers. The total number of teachers and staff is 53 working under the supervision of a principal and a vice principal.
- There are 765 students with 363 girls and 402 boys.

### Classroom & Office Tech: Student/tech ratio

Computers	28	27 to 1 (all students)
Printers	3	255 to 1 (all students)
TV	17	45 to 1
Copiers	2	(teachers use only)
VCR	2	(teachers use only)
Digital Camera	2	(teachers use only)
Audio Tape Recorder	1	(teachers use only)
Lazer Disc Player	18	42 to 1

*Entrance to the Koror Elementary School*



### Present & Past principals

	<i>Years</i>
7. Esther Koshiba	1999-present
6. Caleb Olegeriil	1971-1999
5. Daiziro Nakamura	-1971
4. Hilaria Ungilrengul Lakobong	
3. Tarkong Pedro	
2. David Remarui	
1. Tatsuo Adachi	

### Teacher Certification (includes principal & Vice Principal)

<i>Highest Education</i>	<i>Number</i>
• High School	13
• Degree (AA or AS)	16
• Degree (BA or BS)	7
• MA	0
• Others (Certificate)	1

### Estimated Annual Budget

• Personnel	\$526,384
• Supplies	\$26,248
• Total	\$552,632

### Accomplishments

- I. Teachers
  1. Teachers of the Year, Andrew Tabelual 2001  
Teacher of the Year, Kiarii Obeketang 2003
  2. First Runner Up, Joyce Beouch for Employee of the Year  
First Runner Up, Donna Udui for Teacher of the Year
  3. Christa McAuliff Scholarship, Kiarii Obektang
  4. 8 teachers attended PEC Samoa
- II. Facilities
  1. Phase I & II walkway completed
  2. Library and special ed. renovation completed
  3. New talbes, desks and chairs acquired.
  4. 84 electric fans installed
- III. Students: Videofilming, Arts, Carving, Youth Retreats



# Meyuns Elementary School

## Established in 1968; New School built in 1980's

### Brief School History

Meyuns Elementary School was built much later because most Meyuns students attended Koror Elementary School. The Trust Territory government did not feel that there were enough students to build a new school in Meyuns. After Typhoon Sally in 1967 consideration was given to a new school in Meyuns because Koror Elementary School was destroyed by the typhoon. Two old quonset buildings were constructed and housed school only from 1st grade to 3rd grade. There were three teachers who were working at the school when it opened in 1968. They were Miriam Sakuma, Ymesei Ezekiel and a Peace Corps Volunteer by the name of Bob Braodbent. The three worked under the supervision of Kenzi L. Mad and Mr. Tosiwo Nakamura. In 1969 Mr. Steve Umetaro was hired as the school's first principal and immediately increased the grades to include 4th and 5th grade. When a girl who attended school in Koror was ran over by car at the Meyuns causeway, the parents began to seek transfer of all Meyuns students to Meyuns Elementary School and in 1973 Meyuns Elementary School was increased to include all grades from 1 to 8.

Several programs utilized Meyuns as the model school for their programs due to the schools need for teachers and the low enrollment at the school. Such programs included the Classroom Teacher Trainer Program and the Student Teacher Trainer Program out of Community College of Micronesia (CCM). The other program was TESL which stands for Teaching English as a Second Language which was used to train English teachers for the other schools in

### School Site

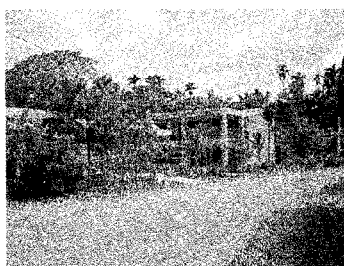
Meyuns Elementary School site sits on 47,246 sq. meters of sea-side property at Meyuns Airport. This property was retained by the National Government in the Land Settlement Agreement between the Palau National Government and the Koror State Government. The Meyuns Council of Chiefs represented by Uchel Imeong has filed registration for the land in the event the National Government ceases to use the property for school purposes.

### School Information

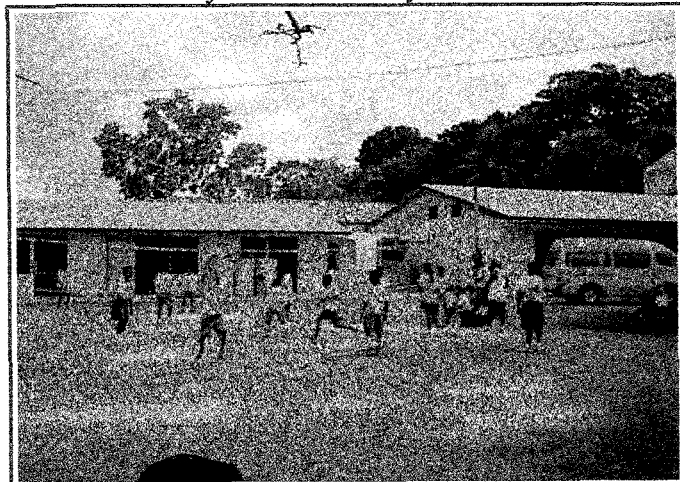
- Meyuns Elementary School has 5 buildings with 3 consisting of classrooms. The other two are cafeteria and computer lab.
- The three buildings hold 12 classrooms with an average size of 770 sq. ft. The average number of students per class is 23.
- The total number of students is 186 with 92 girls and 94 boys.
- There is a total of 10 teachers, 2 special education teachers and one PE teachers. There are 8 administrators and support staff working under one principal.

### Classroom and Office Tech: Student Tech ratio

Computer	16	12 to 1
printers	2	90 to 1
TV	2	for teachers use
VCR	2	for teachers use
copiers	2	for teachers only
Overhead Projectors	1	for teachers only
Other Equipment	3	for teachers only



*Meyuns Elementary School*



### Present & Past principals

	<i>Years</i>
6. Alvino Kenty	1999-present
5. Miriam Sakuma	1997-1999
4. Basilio Deltang	1987-1997
3. Yusim Blesam	1986-1987
2. Hilaria Lakobong	1973-1985
1. Steve Umetaro	1969-1972

### Teacher Certification

<i>Highest Education</i>	<i>Number</i>
• High School	7
• Degree (AA or AS)	3
• Degree (BA or BS)	3

### Estimated Annual Budget

• Personnel	\$230,233
• Supplies	\$7,628
• Total	\$237,861

### Accomplishments

#### I. Teachers

1. Some teachers received AS degrees in education and special education.
2. Several teachers have completed workshops on curriculum framework and science and health workshops.

#### II. Students

1. Talent Search for supporting students in core subjects and reading comprehension.

#### III. Facilities

1. New building for two classes and principals office.
2. Paved entire school ground between buildings.
3. New ditch around school campus.
4. Two water containers on the roof of the cafeteria.
5. Two outside toilets

# **Peleliu Elementary School** **Established in 1946; Rebuilt in 1965**

## **Brife School History**

Peleliu Elementary School began in 1946 at its present location. The school was built with concrete floor, wooden walls and tin roof. The school only accommdated grades 1 to 6. Those who finished 6th grade moved to Koror to attend Intermediate School. In 1966, another building was constructed and the school was increased to accommodate 1 to 8. The first principal was Mr. Tellei who only served for one year and then Mr. Kulas Sengebau served from 1946 to 1983. Subjects that were taught included Math, English, Science, Social Studies and Palauan reading. The students attended school from 8:00 a.m. to 2:00 p.m. and played different sports at the school after classes. Some of the first teachers who worked at the school were Heroic King, Went Tongmy, Dirkedil Osamu, Aiko King, Dongasang Rechungel, Timarong Sisior, Lange Joseph, Okada Ongklungel, Magdalene Remeliik. Some of the first students who attended the school were Ayako Martin, Delbotb Kebekol, Oldekyang Tamakong, Sebuu Skibang, Edboi Rruul, Sowad Rekisiwang.

## **School Site**

Peleliu Elementary School sits on 132,260 sq. ft. of seaside property. This property was quitclaimed to the Palau Public Land Authority on December 6, 1983 by the High Commissioner of the Trust Territory of the Pacific Islands.

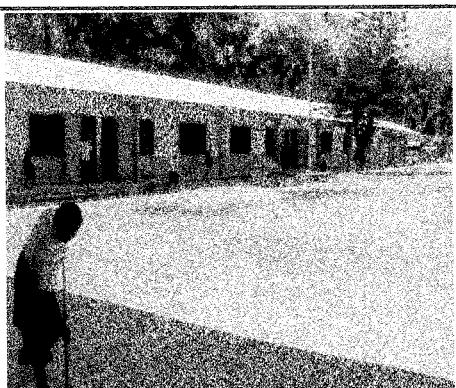
## **School Information**

- The school has 3 buildings of which two are designated for classrooms and support offices. These include the computer lab, the library and the school office. there are 8 classrooms with an average size of 892 sq. ft. with a headstart building adjacent to the main school building.
- There are 11 teachers including 2 Special Education teachers and a PE teacher. There are 6 support staff making a total of 18 working under one principal.
- There are 117 students with 59 boys and 58 girls. The average student per class is 15.

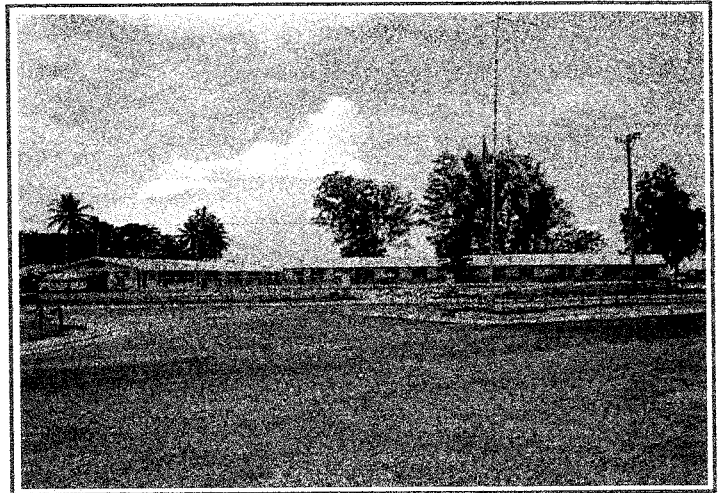
## **Classroom & office Tech: Student Tech ratio**

Computers	20	6 to 1
Printers	1	117 to 1
Copiers	2	teachers use
TV & VCR	1 set	teachers use
Long Didtance Ed.	1	for teaching
Other Equipments	3	teachers use only

A student cleaning in front of the classrooms



## *Peleliu Elementary School*



## **Present and Past principals**

	<i>Years</i>
7. Ngereblunt Arurang	2002-present
6. Roman Ridep	2000-2002
5. Emery Wenty	1992-2000
4. Lange Joseph	1987-1992
3. Went Tongmy	1984-1987
2. Kulas Sengebau	1946-1983
1. Telei	1945-1946

## **Teachers Certification**

<i>Highest Education</i>	<i>Number</i>
• High School	6
• Degree (AA or AS)	3
• Degree (BA or BS)	2

## **Estimated Annual Budget**

• Personnel Cost	\$140,387
• Supplies	\$4,229
• Total	\$144,616

## **Accomplishments**

### **I. Teachers**

1. Annette Ucherkemur and Esmeralda Smau presented "Peleliu Battle Sites" at PEC Conference in American Samoa.
2. Esmeralda Smau attended Math Institute in Hawaii.
3. 2 teachers attended PIBBA conference.
4. 9 out of 16 teachers have completed Multimedia Com puter Institute.

### **II. Students**

1. Olkeriil Smith participated in Japan Student Exchange program.
2. 2002 8th graders received certificates for tutoring from 21st CCLC.

### **III. Facilities**

1. Mini Clinic for school was built.



# **Angaur Elementary School** **Established in 1953; Rebuilt in 1966**

## **Brief School History**

Angaur Elementary School began immediately after the war in 1945. The students were not that many since many of the families escaped to Babeldaob when war broke out. There were about 30 students altogether until the families returned from Babeldaob on or about 1947. The first school building was a military quonset in Iwaiu hamlet by the beach. The first principal was Akiwo Murphy and he had several very young teachers working with him. The teachers at the time included Masao Gulibert, Julian Kazuo, Eridel, Angelina and Amalia. These were actually students but they were much older than the rest of the students (they were about 15 to 17 years old) so they were asked to teach. In 1953 the school was built at its present site. In 1966, the school was rebuilt at the old school site by the dock. Later it was relocated back to its present site. Some of the first students were Sus Belibei, Vic Uherbelau, Andy Uherbelau, Lasarus Salii, Lorenza Pedro and Balerio Pedro.

## **School Site**

Tochi Daichio Lot No. 331 with a total of 8,400 square meters was quitclaimed to the government for school use on June 8, 1962. However, the school is not located at this site anymore, it was moved after 1966 to its present site. No one seems to have any information as to why the school was moved or who owns the property where the school is. The area where the school sits has not been designated and not claims has been filed on the property.

## **School Information**

- Angaur Elementary School has two main buildings with one connecting to the cafeteria. The two buildings house all 7 classrooms, library, computer lab, office, and other support offices.
- There are 7 classroom with the average size of 570 square feet per classroom housing an average of 5 students per class.
- There are 34 students with 18 girls and 16 boys.
- There are 8 teachers with 1 Special Education teacher and 2 more staff working under 1 principal.

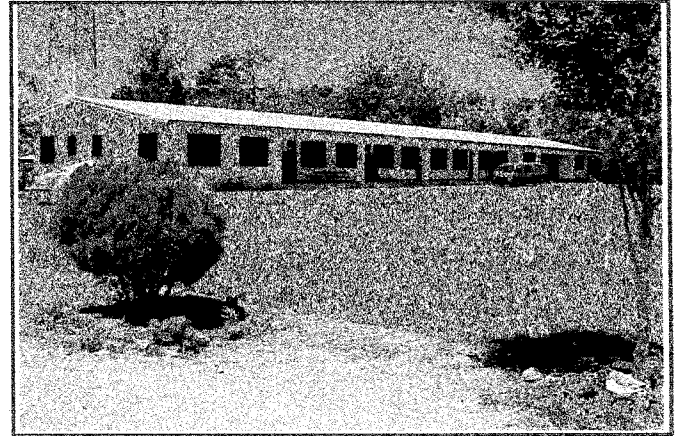
## **Classroom & Office Tech:Student/tech ratio**

Computers	6	6 to 1
Printers	1	all students
Copiers	1	broken
TV & VCR	1 set	

Angaur students studying hard!



## *Angaur Elementary School*



## **Present & Past Principals**

	<i>Years</i>
6. David Yamada	1996-present
5. Joseph Antipas	
4. Lewis Tsungino	
3. John Telei	1956-
2. Timarong Sisior	1955 only
1. Akiwo Murphy	1945 to 1954

## **Teacher Certification**

<i>Highest Education</i>	<i>Number</i>
• High School	8
• Degree (AA or AS)	0
• Degree (BA or BS)	1

## **Estimated Annual Budget**

• Personnel Cost	\$107,934
• Supplies	\$1,390
• Total	\$109,324

## **Accomplishments**

### **I. Teachers**

1. 2 teachers completed the Health & Science Training
2. Carla Polloi was nominated to the Teacher of the Year.

### **II. Students**

1. Participated in Cultural Competition with Peleliu students
2. During Awareness Week the students performed
  - Dances
  - Chesols & Rebetii
  - Science projects in which they won prizes
  - Math Games in the classroom

### **III. Facilities**

1. Seabees completed school water tanks
2. Surangel & Sons paved entrance to kitchen (donation)
3. Received 3 oscillating fans through Taiwan funds
4. Received 5 oscillating fans from principal of Koror Elementary School.

## Southwest Island Schools

### Hatohobei, Sonsorol and Pulo Ana Elementary Schools

#### Hatohobei Elementary School

The school was established in 1962 to accommodate the students in Hatohobei. The school works like a homeschool where there is one teacher responsible for all classes. This is because there are not many students on the island to have all classes. Those who worked in the school before are as follows:

- |                   |                |
|-------------------|----------------|
| 1. Fabian Basilio | 1962 - 1968    |
| 2. Isauro Andrew  | 1968 - 1994    |
| 3. Rosa K. Andrew | 1994 - present |

Currently there are 3 students in Hatohobei at a cost of \$11,957 per year. The Ministry of Education in cooperation with the Hotohobei State government recently installed watertanks to the school and the school kitchen to ensure that there is water for the school in the event there is a drought.

School supplies are sent to Hatohobei whenever there is transportaiton to the island.

#### Sonsorol Elementary School

The school was established in 1972 to help the students who lived in Sonsorol. The school is similar to Hatohobei in that there is only one classroom for all students and the teacher is reponsible to teach all grades. Sonsorol has the largest enrollment of 13 students this year. The school has a library and several instruments for students to learn. The school also has a small kitchen where lunch is provided to the students.

The classroom teacher is Nancy Sabino and the school cook is Huana Sapemang. The school recently installed water tanks to help the school in case there is a drought. The school has new tables, chairs and other equipment to help the students in their studies. The school operates on a \$20,386 estimated annual budget.

The school supplies and other materials are sent to the school whenever there is transportation.

#### Pulo Anna elementary school

The school was also built in 1972 to help the students who decided to live on the island and not move to Koror for education. There are 5 students in all who live on the island and attend school in this one classroom facility. There is a small kitchen that is used to feed these students. The school has one teacher who teaches all grades and one cook. The teacher is Delphina Sumor and the cook is Juana Sumor. The school recently installed water tanks to ensure the school is safe in the event of a drought. The schoool is also provided supplies whenever there is transportation.

The school operates on a \$9,551 estimated annual budget.

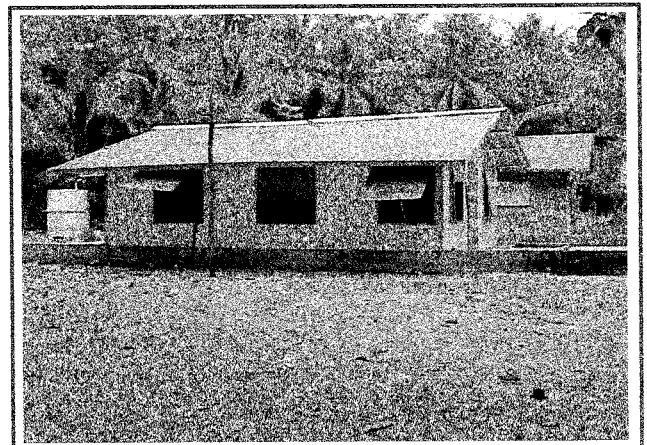
Note: The three school enjoy assistance from the community much more than other schools. These are small communities and the children are treated and raised as everyone's children. The community offers whatever it can to support the school programs and the students including donating food, materials and other support to the education of their children.



Hatohobei Elementary School



Sonsorol elementary school



Pulo Anna elementary school

**Palau High School**  
**Established in 1947; re-established in 1962;**

**Brief School History**

Palau High School first started as Palau Intermediate School and was administered under the Navy Administration in 1947. The school only covered grades 7 to 9 grades because elementary school at the time covered 1 to 6 grades. The intermediate school was very hard because most teachers were students from the former Japanese schools and did not understand English. This was a major difficulty not only for the teachers but also for the Navy Administration which held the mandate of providing education to the local people. Some made time to teach in the classroom but most used the local people. Those who were recruited as teachers were brought in and taught (they learned by memorizing because they did not know English) lessons for each day before going to class to teach. The school was located at the present PCC campus using buildings left by the Japanese.

The Navy Administration immediately began plans for a Teacher's Training School with a purpose of training the would be teachers. The facility was built in Pohnpei and would be teachers were sent there to train. They received money to cover all their needs. The would be teachers were obligated to return home as teachers, sort of a payment for the assistance they received.

In 1960's when the elementary schools were increased from 1 to 8 grades, the Intermediate School was changed to cover 9 to 12 and the name was changed to Palau High School. Many of the Vocational Education Programs that were taught when the school was Intermediate School were carried to Palau High School. These included gardening, carpentry, and others.

**School Site**

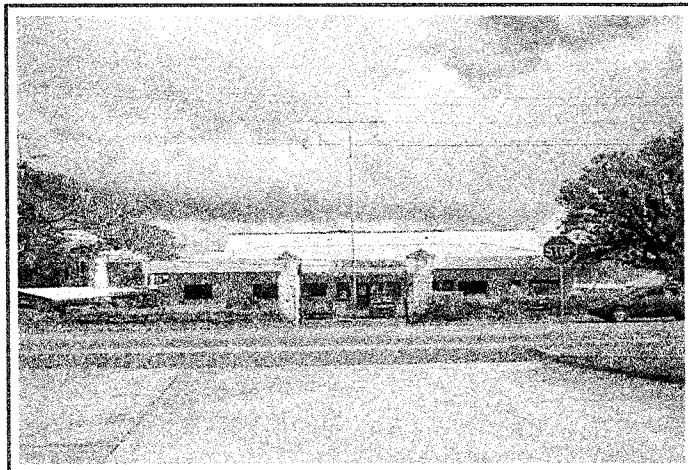
The Palau High School site was retained by the National Government as part of the Land Settlement Agreement between Koror State and Palau National Government. This property is retained indefinitely or as long as the National Government continues to use it for school purposes.

**School Information**

Palau High School has a total of 14 buildings consisting of the following:

- 42 classrooms with an average size of 830 square feet.
- 11 bathrooms with an average size of 400 square feet.
- 1 computer lab; 950 square feet.
- Health and Science lab; 494 square feet
- Library 760 square feet
- Agriculture & Mechanic shop; 2,907 square feet
- Office Building with 6 offices with an average size of 200 sq. feet.
- Science Lab; 1683 square feet
- Teachers lounge; 688 square feet
- School To Work; 1,344 square feet
- Study Hall; 1,520 square feet
- Gym; 11,880 square feet

*Palau High School*



- There are 753 students with 389 girls and 364 boys.
- There are 63 teachers including 3 Special Education Teachers and 17 administrators and support staff.
- There are 3 teaching position that are vacant

**Teacher Certification**

<i>Highest Education</i>	<i>Number</i>
High School	2
Degree (AA or AS)	20
Degree (BA or BS)	32
MA	5
PhD	1

**Classroom Tech & Student Tech Ratio**

**Computers**

- There are 30 computers in the multi media lab at PHS which are mostly used by students study, do research and presentations.
- Teachers often use these computers when making presentations to students.
- There are 4 classes per day using the multi-media with an average of 25 students per class. That is 100 students per day using the lab.
- There are 21 computers in the computer classes.
- There are 2 classes in the morning only at Palau High School with an average of 21 students per class or 42 students per day.
- Palau High School also has other equipments such as copiers, printers, overheard projectors, TV & VCR. These are often used by teachers in their classes or for projects.

## Palau High School Continue

### Present & Past Principals

	Years
Ray Mechol	1999 to present
Rosemary Mersai	1995-1999
Leo Ruluked	1972-1994
Bion Blunt	1969-1971
Jonathan Emul	Not known
Sadang Silmai	Not known

### Automotive Technology

Palau High School offers Automotive technology education to students at Palau High school in 4 different levels. It is hoped that students who take these classes are given the basic understanding of different technologies in building automobiles. With the knowledge acquired, the students should understand the dangers involved in car repairs, shop maintenance and also have an understanding of different car engines and machinery and their maintenance. The courses are offered in four different levels with the lower level courses serving as prerequisites to the higher level courses.

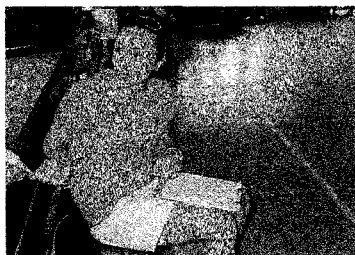
### Construction Technology

Palau High School offers four different levels of construction teaching and training to help students whose interest is in the field of construction gain basic knowledge in safety and conduct in a construction work environment. The course is designed to teach and train students to adhere to strict conduct and behavior in a work environment and to take all precautions to ensure safety of themselves, others and the properties they work with. The courses also offer basic knowledge in construction including, design, basic engineering, planning, carpentry, construction, finishing and other work involved in construction. The lower level courses serve as prerequisite to the higher level courses.

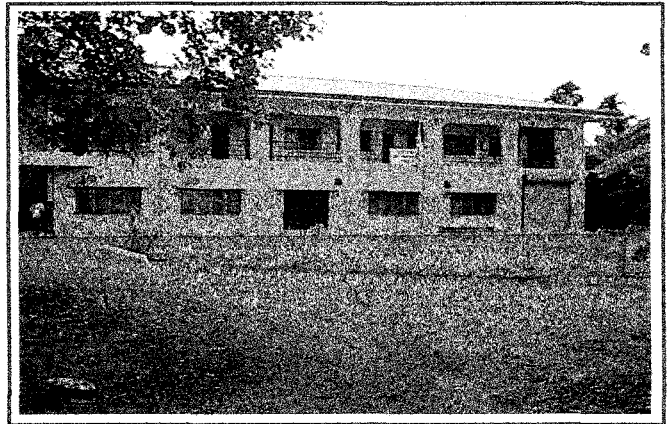
### Agriculture

The Palau High School Agriculture program is a two level course that helps provide the students basic knowledge on turf management and farming. The courses cover soil formation, basic horticulture principles, tools and equipment, soil contouring, farm site selection and preparation, vegetable classification, hybrid and variety of vegetables, plant parts and functions, harmful and beneficial insects, plant propagation and nursery. The courses also cover safety procedures, farm machineries and equipment, pest control, marketing and job opportunities, swine and poultry farming. These classes are rather small and offered juniors and seniors. There is an average of about 10 to 12 students per semester who are accepted to take these classes. It is hoped that those who are accepted to these classes have an interest in pursuing a career in Agriculture.

Stephanie Ngirchoimei  
preparing her team for  
the awareness week  
volleyball tourney.



*The new police academy/PHS carpentry building*



### Counseling

Palau High School offers counseling to students in need of support in their work. The main objectives of the counseling office is to provide academic, college, career, and guidance counseling to all students. The school counselors provide assistance during school registration and help advice the students on the courses they sign up for. The counselors also assist the students in their career choices by doing Job Shadow interviews and mentoring interviews. These interviews along with other work done with the students help determine the students interest and abilities and their career choices. The counselors also serve facilitators between the school, student and parents to ensure that all possible assistance are utilized for the benefit of the student. They serve to inform the parents of problems the student might be experiencing in school and where the parents can step in or intervene to provide support so the student can overcome their difficulties and improve their performance at the school. The counselors also help all students in their preparations for exams to higher institutions or training. The counselors are tasked with the overall development of the student to ensure that they are prepared to enter higher institutions or enter the community as a respectable citizen.



Cisca Skiwo organizing her  
officials in the awareness  
week volleyball games.



## MOE Report

- \$100,000 Bilingual State Grant - improve data collection and management (sunset this year)

✓ A data management system has been developed and implemented in the Palau Ministry of Education. Data processed and reported is now used by managers for decision making.

✓ Numerous training opportunities have been supported by the grant program for teachers, principals, specialists, and other personnel to build their capacities in delivering effective instructional services to all students in Palau.

✓ Locally made textbooks for the Palauan Studies program have been developed, revised, and produced for all students in Palau.

- \$65,380 America's Career Resource Network - Develop and Implement Career Guidance Program in schools (sunset this year)

✓ Teacher/Counselor Certification Standard Program: In collaboration with the Palau Community College, the Ministry of Education has developed a Teacher/Counselors Certification Standard Program for all school counselors.

✓ A website and a compact disc containing career and labor market information in Palau have been developed and are now available for public use.

✓ A career resource center has been established to give students, teachers, counselors, and parents access to career curriculum materials, student portfolios, local labor market information, and other career information and resources.

✓ Career Guidance curriculum has been developed and lesson plans prepared for all teachers. Teachers have been participating in training for the career guidance program.

- \$48,000 Byrd Honor Scholarship - Awarded to students and who are determined to be financially disadvantaged \$83,253 Adult Education Program - for GED and Adult literacy programs (Sunset this year)

✓ Since 1994, there has been 71 recipients of the scholarship with 18 still on the program.

- \$44,912 School HIV Prevention Project

✓ Development of MOE policy in all public schools

✓ HIV/AIDS Prevention is an integral part of the comprehensive school health program.

✓ Training is provided for HIV policies, AIDS prevention, first aid and CPR.

✓ There is an ongoing effort to collaborate with other agencies to develop training on knowledge and prevention of aids and other infectious diseases.

- \$40,000 Library Services and Technology Act

✓ The librarians successfully completed the first phase of training as part of the newly developed librarian certification system.

✓ Computers and software have been provided to all libraries.

## School Improvement Initiatives

- A monthly principal's forum at each school site has contributed to a better maintenance and care of each school

- Each school has developed its own school improvement plan

- Each principal has received a budget based on student enrollment for supplies; He/she spends it as he/she sees fit

- Policy has been adopted requiring 97 teachers with only high school graduate to enroll at PCC this coming fall. They are given 4 years to complete a two year program in elementary school education. AA/AS degree will be the minimum requirement for issuing a teacher certificate for all teachers, RPPL 4-57, beginning fall 2003

- No hiring of high school graduates as classroom teachers, effective this coming Fall 2003

- MOE central office staff now come to work on time due to computer assisted time in-time out program. Missed hours will be applied as annual leave.

- Data Driver Teaching & Management - MOE is putting in place procedures, processes, and calendar for collecting identified data to help improve its teaching and management effectiveness. For example, looking at student to computer ration, we now know that we need to procure additional computer for Meyuns Elementary School, because of a big gap of 28:1 compare with 17:1 or even less students to computer ratio.

## Improving Student Achievement

- Teachers continue to receive assistance from educational specialists who regularly visit and provide critical assistance to improve instructions

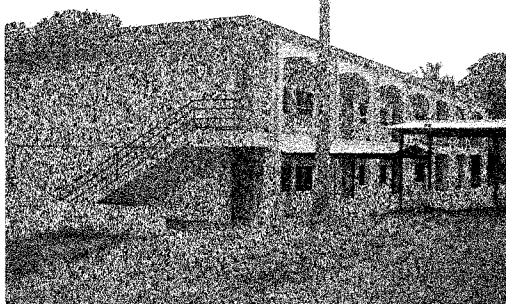
- Learning targets for Math and English have been compiled. These are lists of competencies for each grade level. Each students need to master the list before moving up to the next grade level

- Improving reading comprehension at early grade project has begun in Airai, Meyuns, and Ngiwal elementary schools. It will be expanded to other schools in the near future

- Six Centers for after School Learning Program have been established in 6 school sites: Ngarchelong, Ngeremlengui, Melkeok, Harris, Peleliu, and Palau High School

- Schools' computer technology plan have been developed to close the digital divide gap

KES  
students  
taking  
computer  
class



New K.E.S.  
Classroom  
Building

## Special Education Program

### 2002-2003 Major Objectives

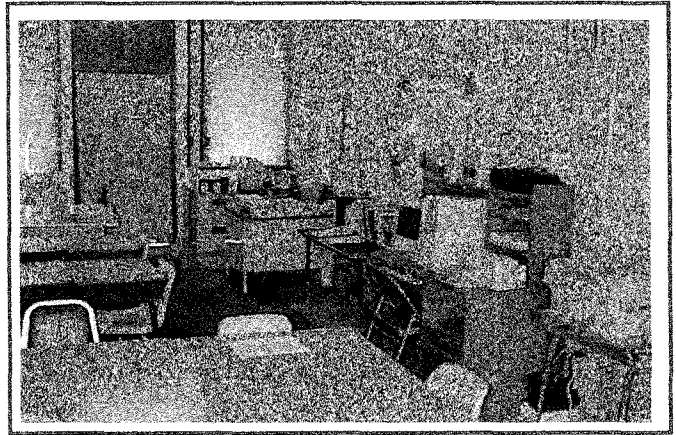
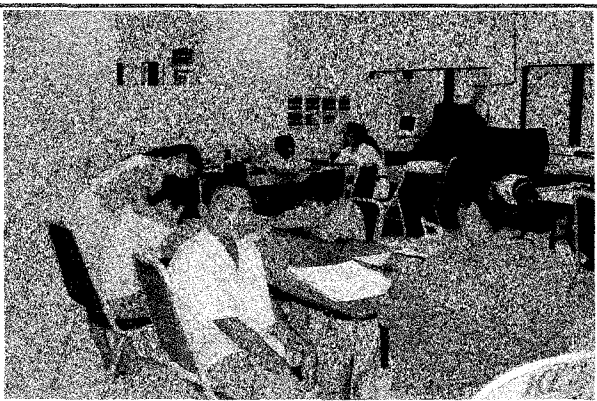
The school year 2002 began with the following major objectives.

- Improving childfind through the schools
- Continue to improve FAPE through direct support for Special Education & Related Services
- Continue to expand and improve emerging need programs to assure appropriate specialized instructions & related services
- Continue to offer staff development of Palau's long term capacity to provide FAPE to eligible students in least restrictive environment.
- Continue to expand the capacity of related services to the disabled children.

### Accomplishments and Achievements

- Continuing Improvement Monitoring Plan (CMIP) was developed and conducted its first training workshop. The purpose of CMIP is to develop a self-study assessment as well as strategic plans to resolve Special Education Program needs.
- 34 Resource Teachers, Related Service Teachers and PCC students completed in a 4 day training on Alternative Assessment. The training aimed to train Resource Teachers to be able to develop assessment and evaluation for those students with severe disabilities who cannot participate and benefit in State Wide Assessment. The training was conducted by Consultants from Guam.
- Two Special Education teachers attended an early childhood conference in Hawaii. The conference concentrated on early intervention and evaluation of severely disabled children.
- Periodic school visits are made to visit Resource Teachers of various elementary schools in Palau to provide assistance and collect data.
- Four participants including Roland Tangelbad and Mike Ongalibang attended a "Parent & Consumer" Conference in Yap State, FSM.
- WRRC Technical Consultants, Shirley A. Coale and James Leinen, visited Palau to provide technical assistance to Special Education. They helped compile the annual performance report and the self assessment study for continuing improvement monitoring process.
- Four elementary school principals and the special education coordinator attended the Pac Rim Conference in Hawaii. Participants of this conference had an opportunity to visit Jefferson Elementary School in Waikiki to observe the Special Education setting at the school.

Special  
Education  
Class at  
KES

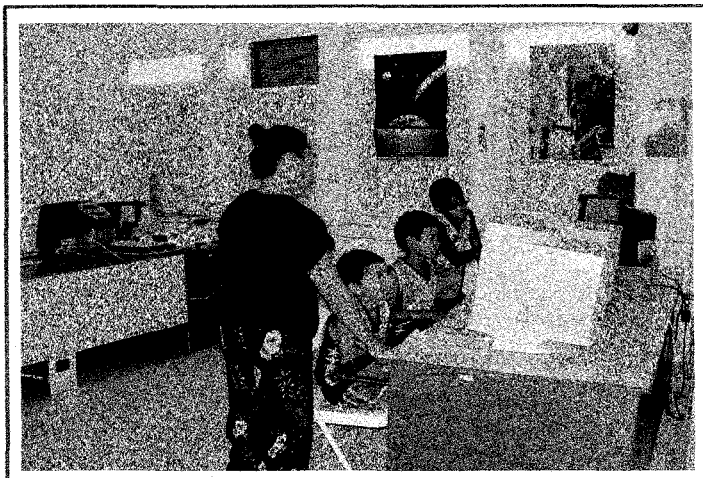


G.B. Harris Special Education Resource Center

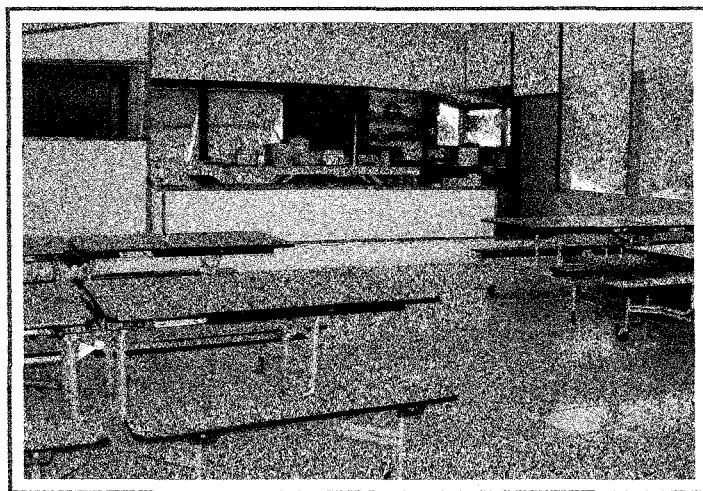
### Continue Special Education Accomplishments

- A profile of Palau entitled "At a Glance Profile of Palau" was compiled and sent to our contact at OSEP in Washington D.C.
- President Tommy E. Remengesau, Jr. signed Proclamation #02-20 designating April 22-26, Disability Awareness Week.
- Two Special Education staff, Pillar Ngiraswei and Stephly Gabriel, attended the NECTAS training in Washington D.C.
- Dr. Anthony Cuhn, his wife and Dr. Greg Dever were invited to lecture on Attention Deficit Hyperactivity Disorder (ADHD) and Attention Deficit Disorder (ADD). Lecture was given to all Special Education teachers, CRT's and staff.
- The Coordinator and all Special Education CRT's attended a 3-Day workshop on Equity Leadership from April 22-25.
- The Coordinator and his staff attended the CIMP workshop in Guam from May 22-25.
- Mr. Joshua Darrow will receive his bachelors degree upon completion of the Alula program in Guam where he is currently studying speech and language disorder.
- Six teachers attended the Head Start Cluster Conference.
- Six teachers attended the PIBBA conference.
- One teacher was sent to Braille Institute in California to attend the California School for the Blind.
- Ten special education staffs including CRT's, teachers and H.S. counselor attended the 2002 Summer Academy in Special Education in Mobile, Alabama.
- The Coordinator and the Minister of Education attended the OSEP Conference in Crystal City, VA and participated in the OSEP Leadership Meeting for the Pacific entities.
- Several Resource rooms in schools were renovated and improved. The ones that were completed were in Melkeok, Ngardmau, and Koror. These resource rooms are used by the students and teachers.





Computer lab in Ngchesar Elementary School



Ngardmau E.S. kitchen was renovated

(continue from Page 27)

### **Curriculum & Instruction**

- All public schools are required to teach the five core content areas which include math, science, social studies, English & Palauan Studies for 45 minutes a day for 180 days.
- Three other content areas, namely health, P.E., and career guidance are taught one to three times a week at the elementary level, however, at the high school level, these courses are taught daily.
- The medium of instruction is both Palauan and English, however, during English and Palauan Studies classes, instruction must be in English for English classes and Palauan for Palauan classes.

### **Facilities Improvement Efforts**

- The roofs of the following schools have been replaced with new tins: Ngerchelong, Ngardmau, Ngiwal & Airai elementary schools
- Walkway and restroom for Melkeok Elementary School have been completed
- Water line has been connected to health clinic room at Harris Elementary School
- Establishment of a monitoring team to ensure quality of instruction and conducive facilities for teaching and learning
- New dining tables have been distributed to schools

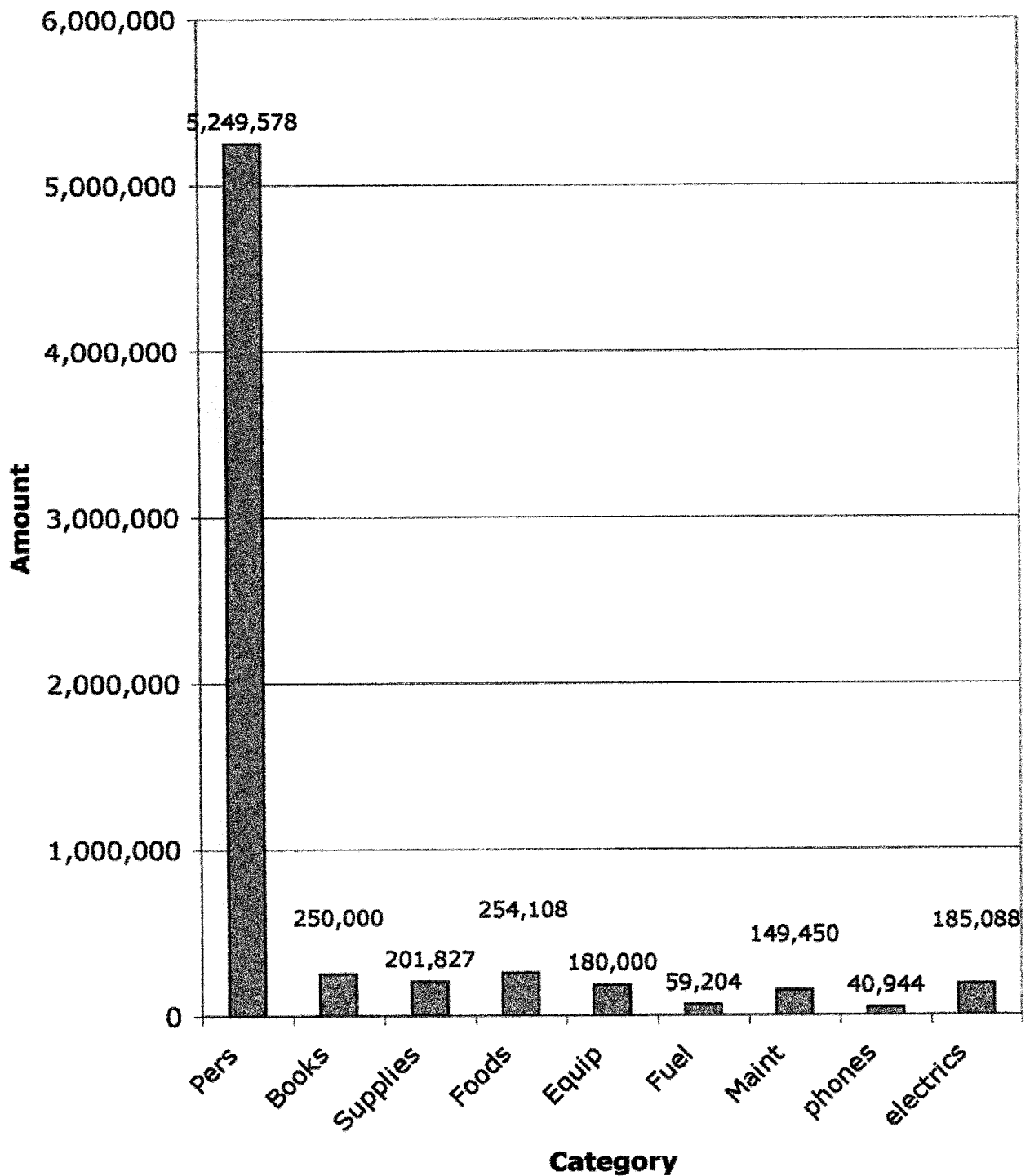
### **Personnel/Human Resources Development**

The most important development related to human resources development is the development of the Ministry of Education's vision statement, which reads, "Our students will be successful in the Palauan Society and the World." The vision provides focus and a sense of direction of purpose. It motivates employees to strive to do their best to ensure all students succeed. The mission statement has been revised to align it more with the vision and business of schooling.

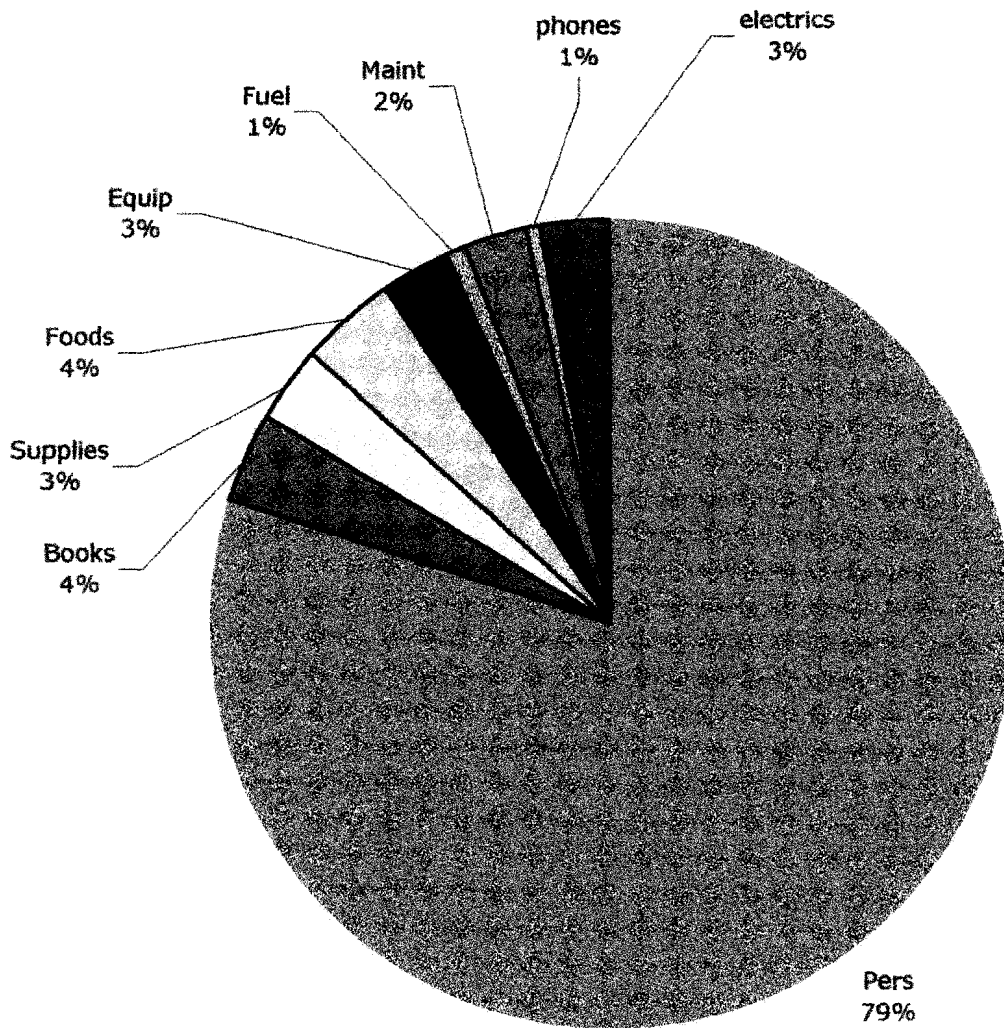
*Highlights of our human resources development efforts include the following:*

- Ms. Arnedia Kiarri Obeketang of Koror Elementary School has been selected Teacher of the Year.
- Ms. Patricia Franz has been hired as school principal for Ngeremlengui Elementary School.
- Kalistus Ngirturong has retired as Chief of School Management
- Administrators' Certification Program Requirements completed and submitted to President Remengesau for consideration and proper action
- Eleven positions (excluding Chief of school administration which is under study and consideration) have not been filled since the restructuring of the Ministry of Education. This translates to savings of \$137,349.67.
- Education Specialists continue to visit schools and provide assistance to advance teaching and learning process
- Job descriptions have been revised to ensure accountability
- School principals and the management team have agreed to establish a policy requiring all teachers (97) with only high school diploma to complete associate degree in 4 years, beginning this coming fall semester. Those who will not complete the associate degree in education program will be laid off, 22 PNC.
- 50 teachers attended two day training on teaching science effectively, including learning to use locally available materials
- All school principals received training on how to send document electronically as part of the Ministry's efforts to become paperless and reducing costs.
- To narrow the digital divide, 100 community personnel and 53 school personnel completed computer literacy training offered in the following states: Angaur, Ibobang, Koror, Ngaraard, Ngardmau, Ngarchelong, Ngiwal and Peleliu
- 10 computer lab managers received training and video cameras to allow them to film their own school activities to help reduce the travel costs for the media personnel. Same personnel have received training on the use of digital camera to help with publication of MOE newsletter, *Chisel a Skuled*, as well as own school newsletter
- One agriculture teacher, Joseph Kinsang of Ngiwal Elementary School, has returned from training in Japan on growing vegetables effectively.

## MOE Budget FY03 Breakdown



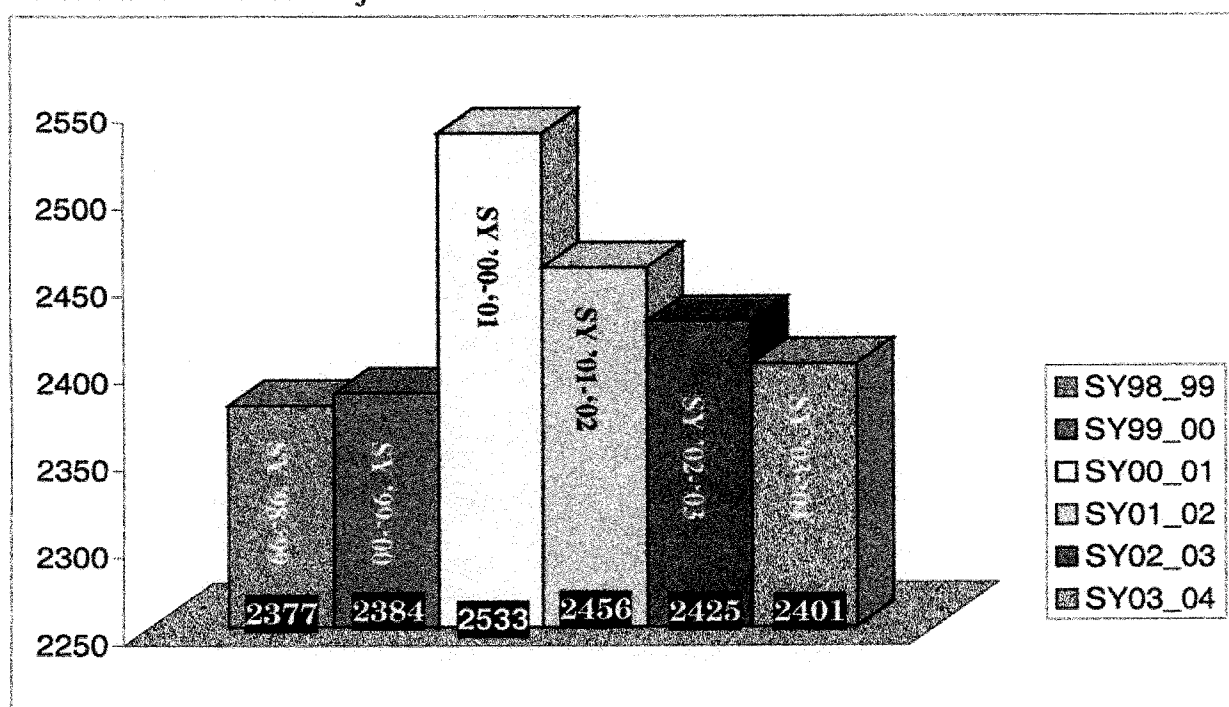
## MOE Budget FY03 Breakdown



Enrollment Summary & Projection Report for SY '03-'04  
 Ministry of Education – Research & Evaluation  
 Report Processed & Printed: Feb. 13, 2003

GRADE_TOTAL	SY98_99	SY99_00	SY00_01	SY01_02	SY02_03
1st Graders	355	337	320	324	311
2nd Graders	318	335	334	302	311
3rd Graders	299	312	329	346	291
4th Graders	297	284	314	326	360
5th Graders	266	278	284	328	292
6th Graders	277	275	421	276	326
7th Graders	291	287	255	279	273
8th Graders	274	276	276	275	261
Enrollment Total	2377	2384	2533	2456	2425

Enrollment Total & Projection for SY 2003-2004

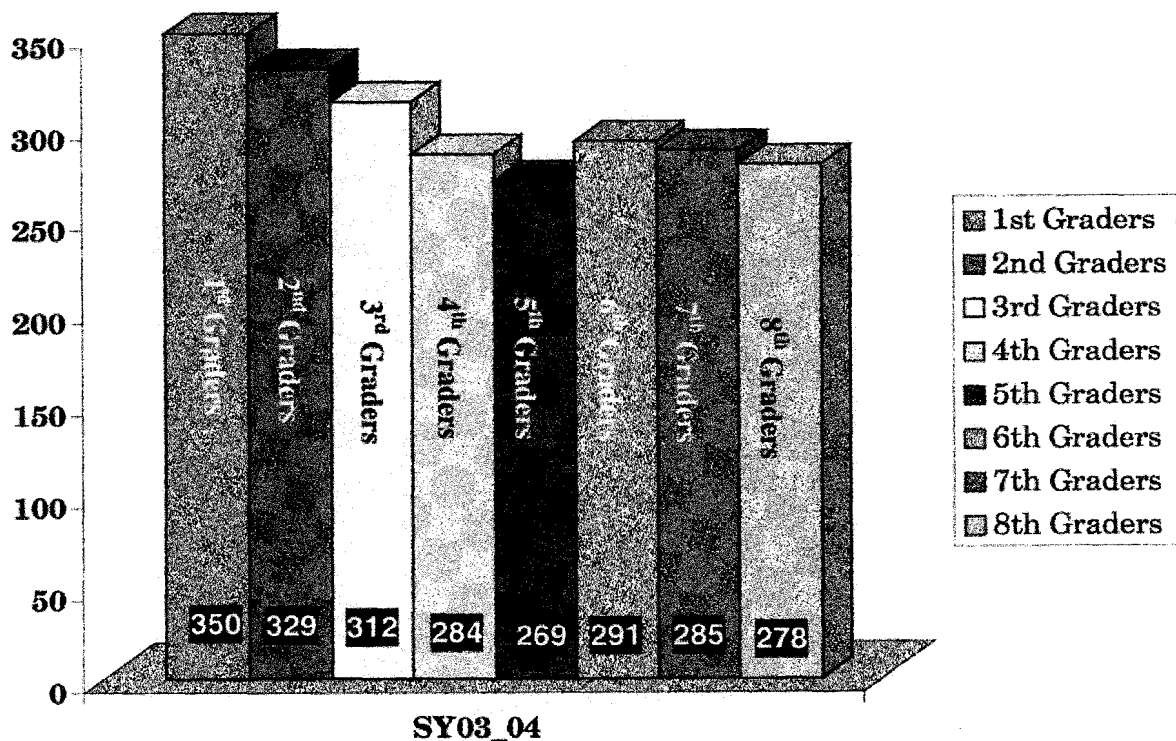




Public Elementary School – Grades 1 to 8  
Enrollment Projection for SY '03-'04

GRADE_TOTAL	SY03_04
1st Graders	350
2nd Graders	329
3rd Graders	312
4th Graders	284
5th Graders	269
6th Graders	291
7th Graders	285
8th Graders	278
Enrollment Total	2401

**Enrollment Projection for SY '03-'04**



**Palau Achievement Test  
National Report  
Spring 1999-2002 Results**

English	Grade Level	SY 99-00	SY 00-01	SY 01-02
	4th	54.9	49.7	55.7
	6th	54.5	54	60.8
	8th	61.3	61.6	66.4
	10th	48.2	53.8	50.5
	12th	63.6	59.6	56.5

Math	Grade Level	SY 99-00	SY 00-01	SY 01-02
	4th	48.4	40	46.5
	6th	33.3	31.4	33.5
	8th	48.7	44.6	49.1
	10th	31.6	53.9	49.4
	12th	23.9	32.9	27.8

Palauan Studies	Grade Level	SY 99-00	SY 00-01	SY 01-02
	4th	54.9	52.3	57.6
	6th	47	56.9	52.2
	8th	56.4	57.1	66.1
	10th	58.8	61.3	59.7
	12th	N/A	N/A	N/A

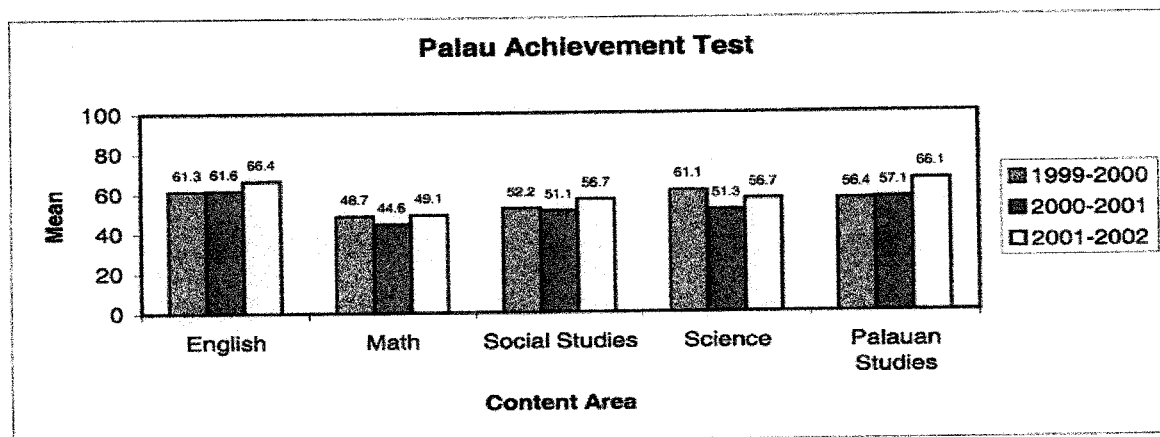
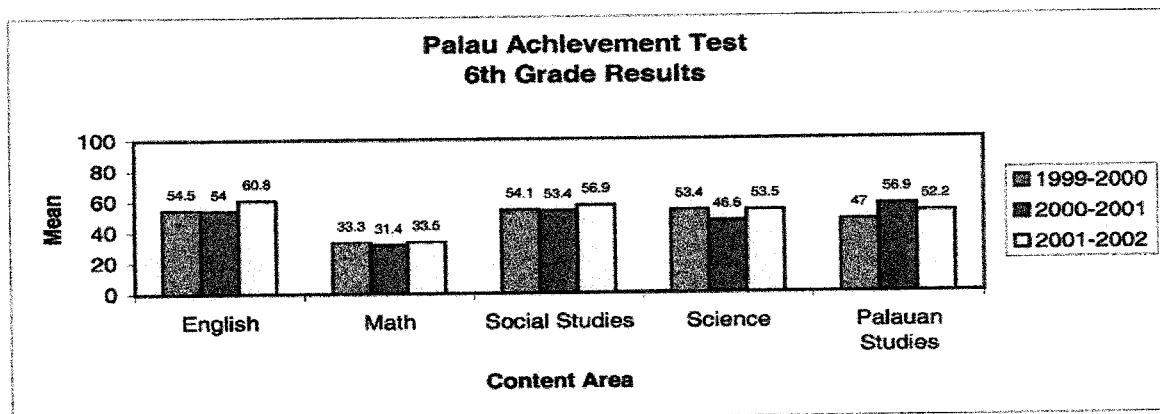
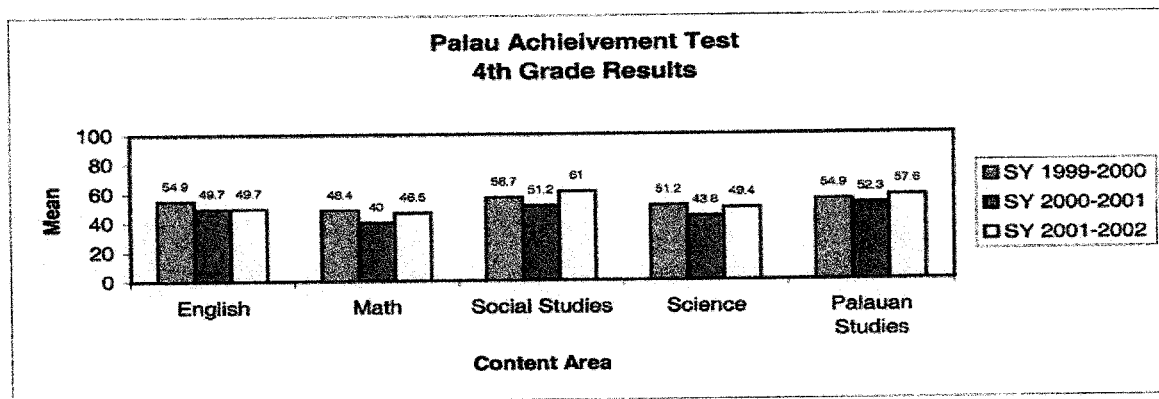
Science	Grade Level	SY 99 -00	SY 00-01	SY 01-02
	4th	51.2	43.8	49.4
	6th	53.4	46.6	53.5
	8th	61.1	51.3	56.7
	10th	40.2	47.4	44.1
	12th	38.8	37.7	38.9

Social Studies	Grade Level	SY 99-00	SY 00-01	SY 01-02
	4th	56.7	51.2	61
	6th	54.1	53.4	56.9
	8th	52.2	51.1	56.7
	10th	54.9	57	56.2
	12th	48	48.8	52.5

Source: Division of Research & Evaluation

02/12/03

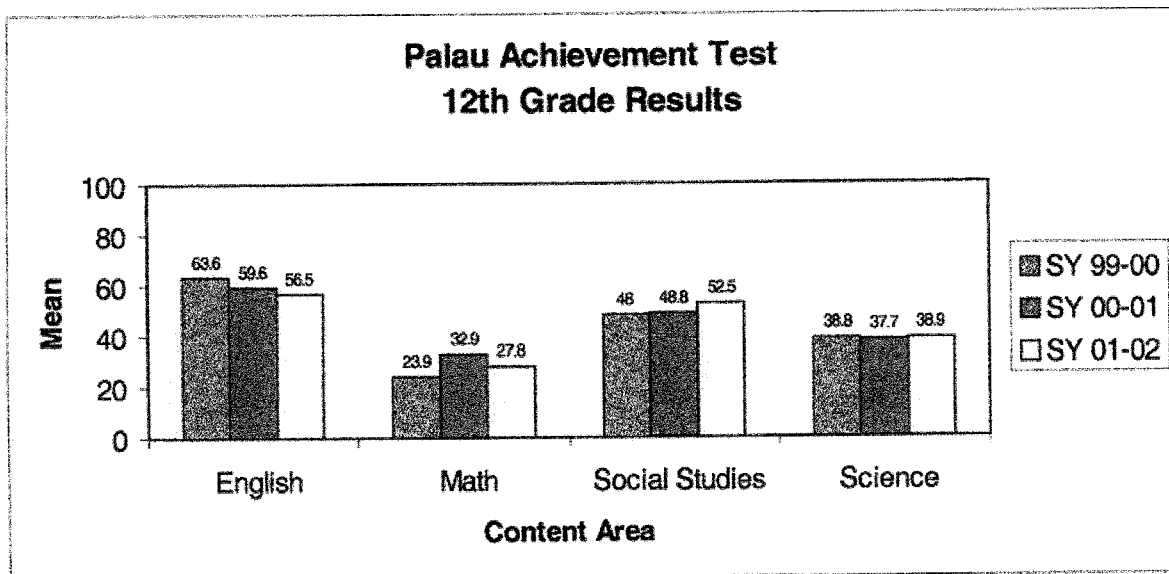
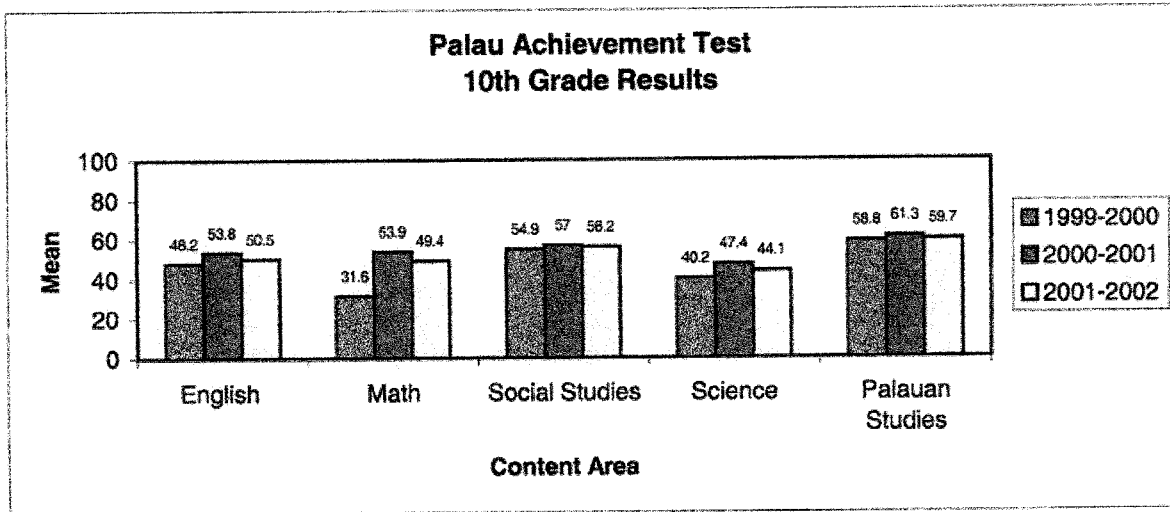
# Palau Achievement Test National Report School Year 1999-2002



Source: Division of Research & Evaluation

Printed on 2/19/2003

**Palau Achievement Test  
National Report  
School Year 1999-2002**



Source: Division of Research & Evaluation

Printed on 2/19/2003



## MOE activities in pictures



Specialists often visit schools



G.B.H. Christmas Play



Special Educatin Staff



Koror E.S. dance club



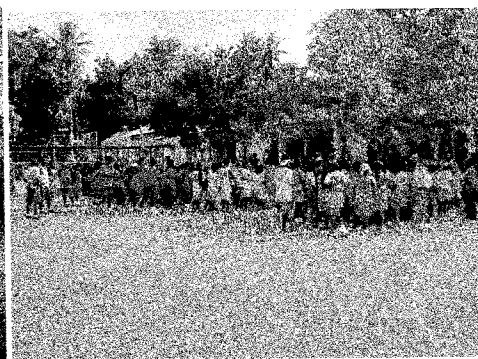
Soccer Tourney at Ngaremlengui E.S.



Meyuns E.S. students enjoying lunch



G.B. Harris E.S. dancers



Soccer Opening Ceremony (East)



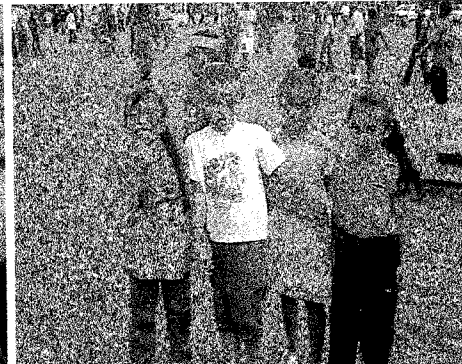
Melkeok Soccer tourney



Soccer Opening Ceremony (central)

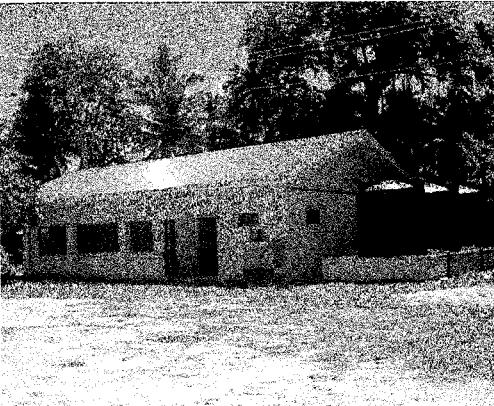


Koror E.S. students watching the show

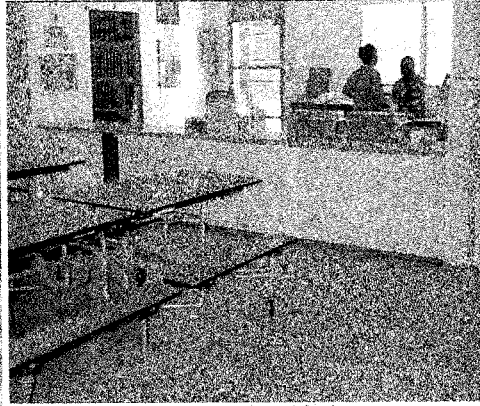


G.B. Harris students on activity day

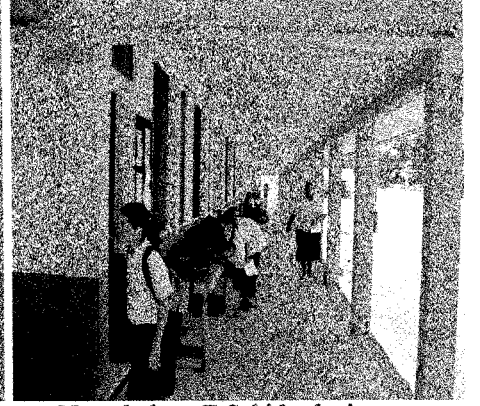
## MOE facilities



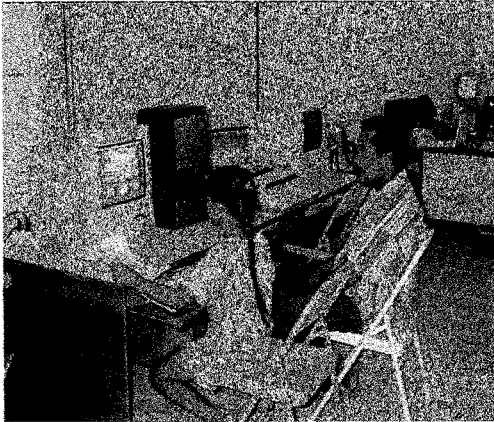
Ngaraard E.S. kitchen



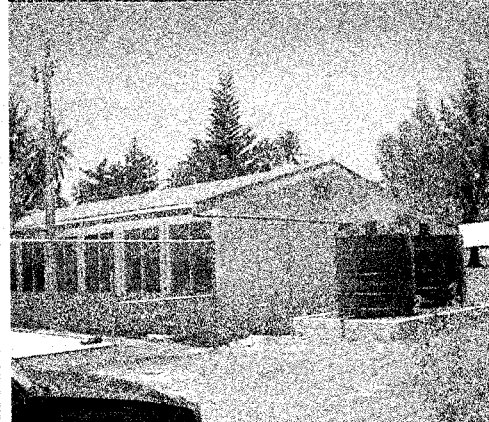
Melkeok E.S. kitchen



Ngerchelong E.S. kids playing



Computer lab in Ngchesar E.S.



Ngiwal E.S. water tanks



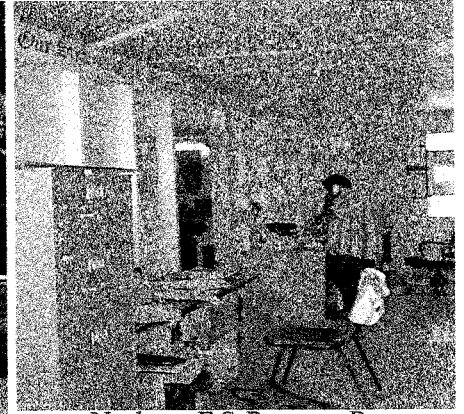
Melkeok E.S. greenhouse



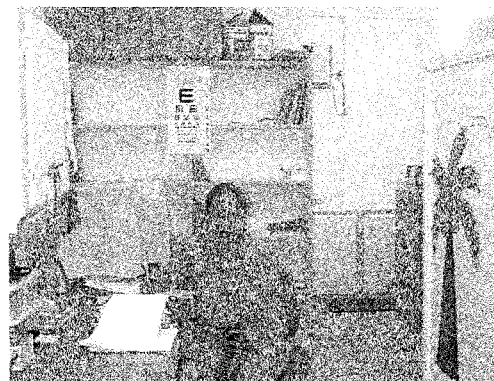
Ngerchelong E.S. playground



Special Education Office



Ngchesar E.S. Resource Room



G.B. Harris clinic



Walkway at Melkeok E.S.



Meyuns E.S. new classroom building