



Ministry of Education, Sports & Culture

Education Statistical Digest 2004

SAMOA

Introduction

The Education Statistical Digest provides a range of statistics and performance measures related to school education in Samoa.

The information included in the Digest is the latest information that is available as at March 2004. Historical data has also been included to reflect changes over time.

The Digest is divided into two parts:

- Part 1 – Data from School Census Information System
- Part 2 – Data from sources other than the School Census Information System

Part 1

Data from School Census Information System

The Annual School Census data collection, held on 3rd March 2004, is a major source of statistical information. The census data is stored in the Ministry's school census information system called Manumea. The school census information system includes a series of reports which can be automatically produced. These reports are contained in Part 1 of the Statistical Digest.

Part 2

Data from sources other than School Census Information System

The MESC's performance measures framework includes a range of measures that are not automatically produced from the School Census Information System. Data has been assembled from a range of sources such as examination results and personnel information as well as other school census information. This information is contained in Part 2 of the Statistical Digest.

Statistical Digest produced by:
Policy, Planning and Research Division
Ministry of Education, Sports & Culture
Samoa
Phone: 21911
Fax: 21917
E-mail: samoamesc@lesamoa.net

June 2004

Table of Contents for Part 1 – Data from School Census Information System

Number of Schools by school type and district, 2004	1
Size of Government schools by district, 2004	2
School enrolments by level, gender, and status 2004	3
School enrolments for all schools, 1995-2004	4
School enrolments for Government schools, 1995-2004	4
Percentage enrolments in Government schools, 1995-2004	5
Male school enrolments, all schools, 1995-2004	6
Percentage male enrolments, all schools, 1995-2004	6
School enrolments by district and maximum level provided, 2004	7
Number of repeaters by level in 2004	8
Repeaters in all schools by level, 1995-2004	8
Percentage of repeaters in all schools by level, 1995-2004	9
Transition rates by year level, 1994-2004	10
Drop out rates (percentage) by year level, 1994-2004	11
Number of teachers by school type and district, 2004	12
Student-Teacher ratios by school type and district, 2004	13
Student-Teacher Ratio by Level, Government Schools	14
Number of Students Absent on Census Day (March 3 rd 2004)	15
Number of Government Secondary Schools Teaching Curriculum Subjects by Level	16
Primary school facilities by Controlling Authority, 2004.	17
Secondary school facilities by Controlling Authority, 2004	17

Table of Contents for Part 2 – Data from sources other than School Census Information System

Average raw score at National Year 8 Examinations	1
Number of Students sitting Year 8 exams	1
Percentage of Year 8 Students that sat the Year 8 Exam	1
Average raw score at National Year 12 examination	2
Number of students sitting national Year 12 Exam	2
Percentage of Year 12 Students that sat the Year 12 Exam	2
Primary Students Identified as at Risk, Year 4, All Schools (Government and non-Government)	3
Primary Students identified as at Risk, Year 6, Government Schools	4
National Age Participation Rates	5
No. of Government Schools that are meeting the national standards for Primary student-teacher ratio of 1 teacher to 30 students (1:30)	6
No. of Government Schools that are meeting the national standards for Secondary student-teacher ratio of 1 teacher to 20 students (1:20)	6
Apparent Retention Rate for All Schools	7
Students commencing first year of tertiary studies	7
Transition Rate from Year 13 to identified tertiary education	7

Definitions

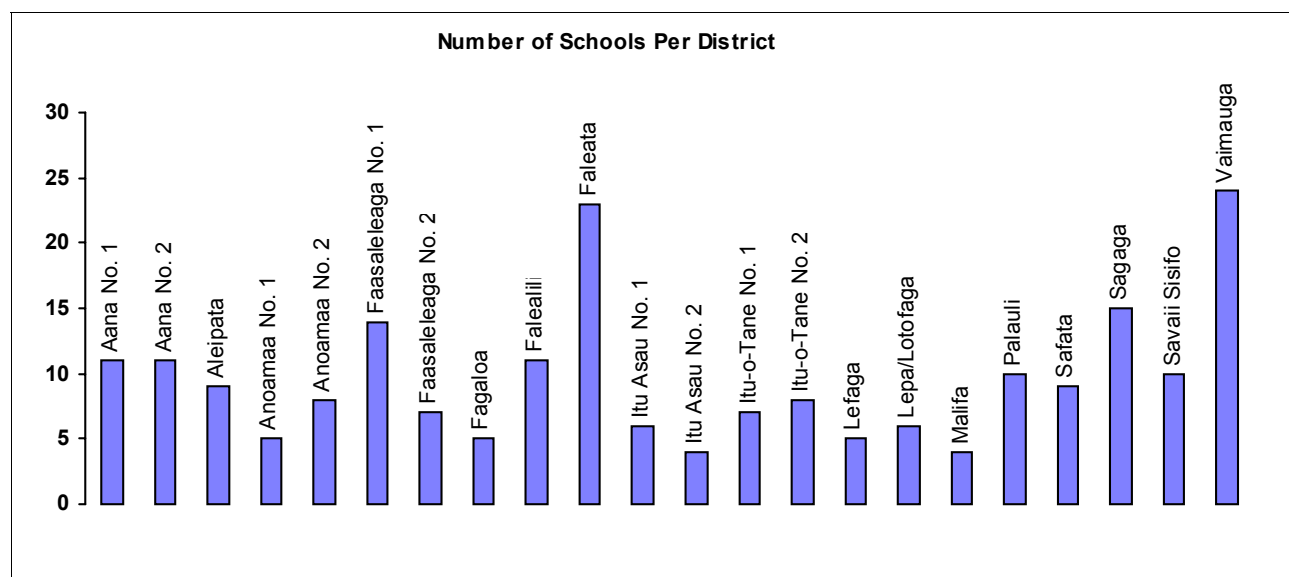
<i>Apparent Retention Rate</i>	compares the number of students in a given year with the size of the cohort some years ago. For example, the apparent retention rate of Years 9–12 for 2003 is calculated as the number of students in Year 12 in 2003 divided by the number of students in Year 9 in 1999.
<i>Completion rates</i>	The percentage of students sitting the national exams is a measure of completion rates, e.g. percentage of students sitting year 8 exam is a measure of how many students starting year 8 actually complete year 8.
<i>Drop-out rate</i>	The percentage of students who neither progressed from one level to the next or repeat the level.
<i>Pri-Sec (Primary-Secondary)</i>	A school that provides both primary and secondary levels, e.g. Fagaloa Secondary School has Yr. 7 & 8 levels. It should be noted that Robert Louis Stevenson School is counted as two schools because of their physical locations being different.
<i>SPELL test</i>	A test undertaken by all year 4 and year 6 students in Government schools. Most non-Government schools also participate, but it is not compulsory for non-Government schools to participate). It provides an indication of the students whose learning outcomes are identified as being at risk (Graded at Level 4 or Level 5 on the test)
<i>Student teacher ratio</i>	is calculated as the number of students at a school divided by the total number of teachers (including Principals) at the school. Data is from Annual School Census.
<i>Transitional rate</i>	is the percentage of the number of students who were at the beginning of a cohort over the number of students at the end of that cohort. For example, the transitional rate into Post-secondary studies is the number of students who commenced post-secondary education in 2002 (National University of Samoa, Samoa Polytechnic) as a percentage of the students who were in Year 13 in 2001.

Part 1 – Data from School Census

**Produced using Manumea, the School
Census Information System**

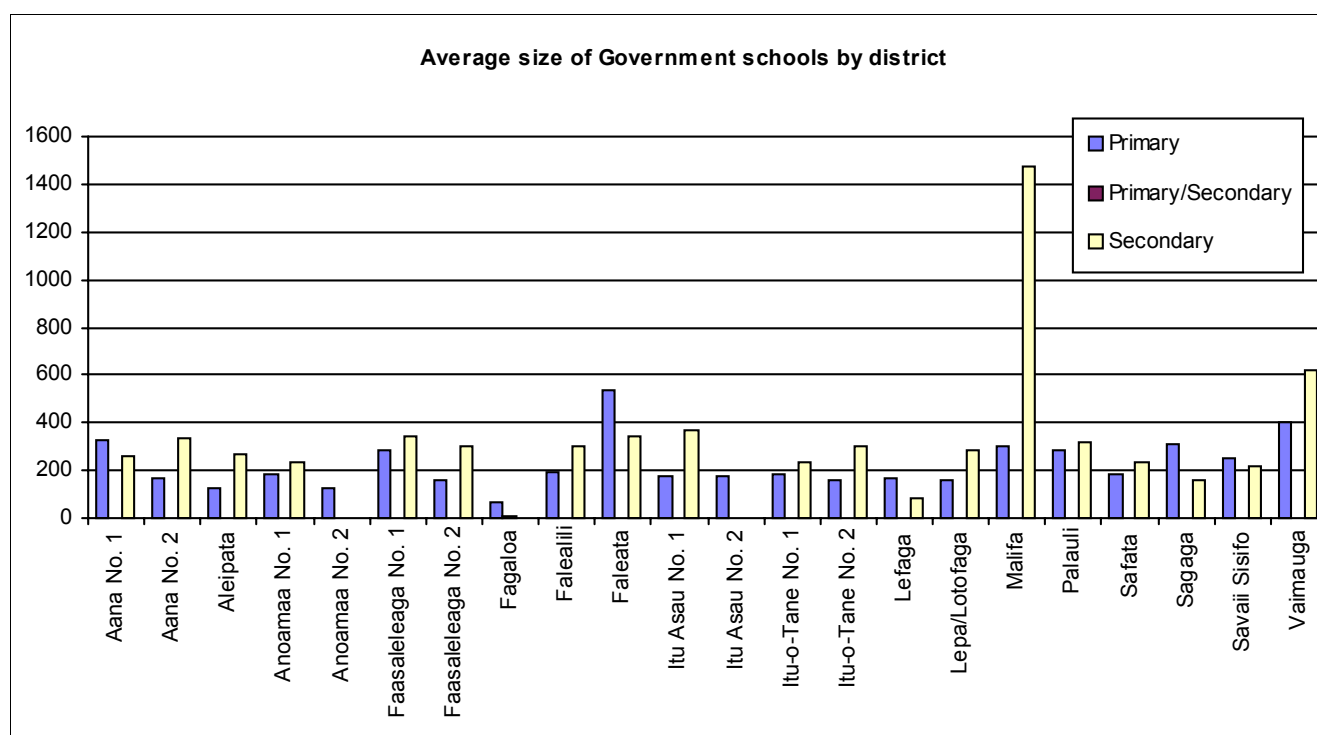
Number of schools by school type and district, 2004

Region/District	Government				Mission				Private				Grand Total
	Primary	Pri-Sec	Secondary	Total	Primary	Pri-Sec	Secondary	Total	Primary	Pri-Sec	Secondary	Total	
Apia Urban													
Faleata	9		1	10	1	1	4	6	3	1	1	5	21
Malifa	1		1	2									2
Vaimauga	10		3	13	3	2	4	9	2			2	24
Apia Urban Total	20		5	25	4	3	8	15	5	1	1	7	47
Rest of Upolu													
Aana No. 1	7		1	8	1		2	3					11
Aana No. 2	10		1	11									11
Aleipata	8		1	9									9
Anoamaa No. 1	4		1	5									5
Anoamaa No. 2	6			6	2			2					8
Fagaloa	4	1		5									5
Falealili	9		2	11									11
Lefaga	4		1	5									5
Lepa/Lotofaga	5		1	6									6
Safata	8		1	9									9
Sagaga	8		1	9	3		3	6					15
Rest of Upolu Total	73	1	10	84	6		5	11					95
Savaii													
Faasaleleaga No. 1	6		1	7	4	1	1	6					13
Faasaleleaga No. 2	6		1	7									7
Itu Asau No. 1	5		1	6									6
Itu Asau No. 2	4			4									4
Itu-o-Tane No. 1	5		2	7									7
Itu-o-Tane No. 2	7		1	8									8
Palauli	7		1	8			1	1					9
Savaii Sisifo	8		2	10									10
Savaii Total	48		9	57	4	1	2	7					64
Grand Total	141	1	24	166	14	4	15	33	5	1	1	7	206



Size of Government schools by district, 2004

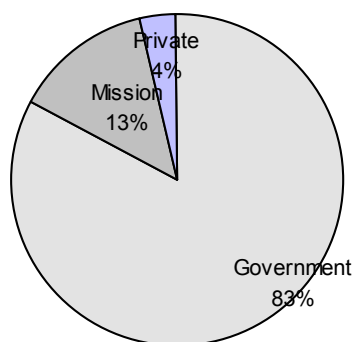
Region/District	Primary Schools				Secondary Schools			
	Number	Average Size	Minimum Size	Maximum Size	Number	Average Size	Minimum Size	Maximum Size
Apia Urban								
Faleata	9	536	270	947	1	347	347	347
Malifa	1	305	305	305	1	1473	1473	1473
Vaimauga	10	403	159	932	3	618	522	716
Apia Urban Total	20	458	159	947	5	735	347	1473
Rest of Upolu								
Aana No. 1	7	328	103	454	1	256	256	256
Aana No. 2	10	166	79	355	1	337	337	337
Aleipata	8	128	41	200	1	270	270	270
Anoamaa No. 1	4	184	120	232	1	236	236	236
Anoamaa No. 2	6	122	36	248				
Fagaloa	4	64	48	92	1	10	10	10
Falealili	9	191	98	468	2	306	265	346
Lefaga	4	166	88	301	1	87	87	87
Lepa/Lotofaga	5	158	89	253	1	285	285	285
Safata	8	186	71	304	1	236	236	236
Sagaga	8	312	224	409	1	161	161	161
Rest of Upolu Total	73	190	36	468	11	226	10	346
Savaii								
Faasaleleaga No. 1	6	282	186	472	1	340	340	340
Faasaleleaga No. 2	6	156	71	229	1	304	304	304
Itu Asau No. 1	5	179	110	266	1	366	366	366
Itu Asau No. 2	4	177	93	247				
Itu-o-Tane No. 1	5	182	136	236	2	235	178	292
Itu-o-Tane No. 2	7	159	64	284	1	301	301	301
Palauli	7	288	123	580	1	320	320	320
Savaii Sisifo	8	251	197	318	2	219	190	248
Savaii Total	48	214	64	580	9	282	178	366
Grand Total	141	236	36	947	25	348	10	1473



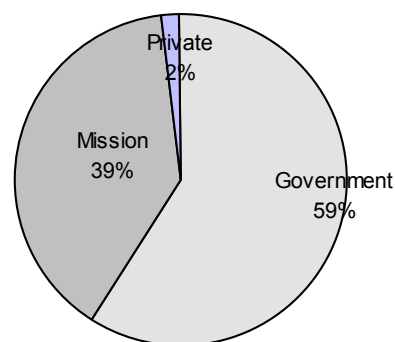
School enrolments by level, gender and status, 2004

Level	Government			Mission			Private			All Schools		
	Males	Females	Total	Males	Females	Total	Males	Females	Total	Males	Females	Total
1	2,479	2,239	4,718	369	372	741	126	119	245	2,974	2,730	5,704
2	2,321	2,063	4,384	354	333	687	101	85	186	2,776	2,481	5,257
3	2,356	2,105	4,461	358	313	671	118	133	251	2,832	2,551	5,383
4	2,151	2,107	4,258	385	307	692	93	91	184	2,629	2,505	5,134
5	2,201	1,987	4,188	333	316	649	104	104	208	2,638	2,407	5,045
6	1,979	1,896	3,875	308	307	615	86	76	162	2,373	2,279	4,652
7	1,996	1,806	3,802	380	331	711	60	47	107	2,436	2,184	4,620
8	1,858	1,762	3,620	328	323	651	51	56	107	2,237	2,141	4,378
Primary Total	17,341	15,965	33,306	2,815	2,602	5,417	739	711	1,450	20,895	19,278	40,173
9	1,219	1,122	2,341	582	676	1,258	43	38	81	1,844	1,836	3,680
10	1,016	1,127	2,143	555	610	1,165	27	24	51	1,598	1,761	3,359
11	1,017	1,006	2,023	532	598	1,130				1,549	1,604	3,153
12	682	851	1,533	618	616	1,234	19	36	55	1,319	1,503	2,822
13	269	394	663	465	569	1,034	32	23	55	766	986	1,752
Secondary Total	4,203	4,500	8,703	2,752	3,069	5,821	121	121	242	7,076	7,690	14,766
Grand Total	21,544	20,465	42,009	5,567	5,671	11,238	860	832	1,692	27,971	26,968	54,939

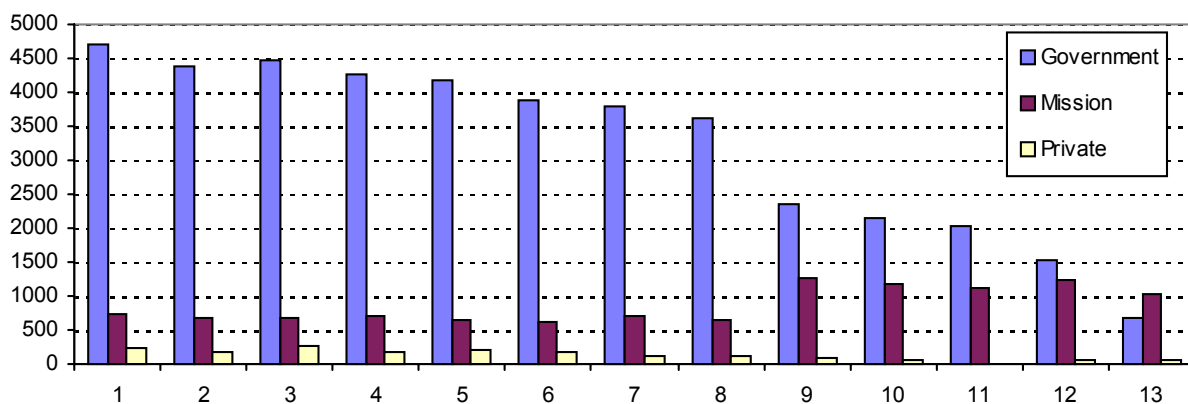
Total primary enrolments by provider



Total secondary enrolments by provider



Enrolments by level and sector

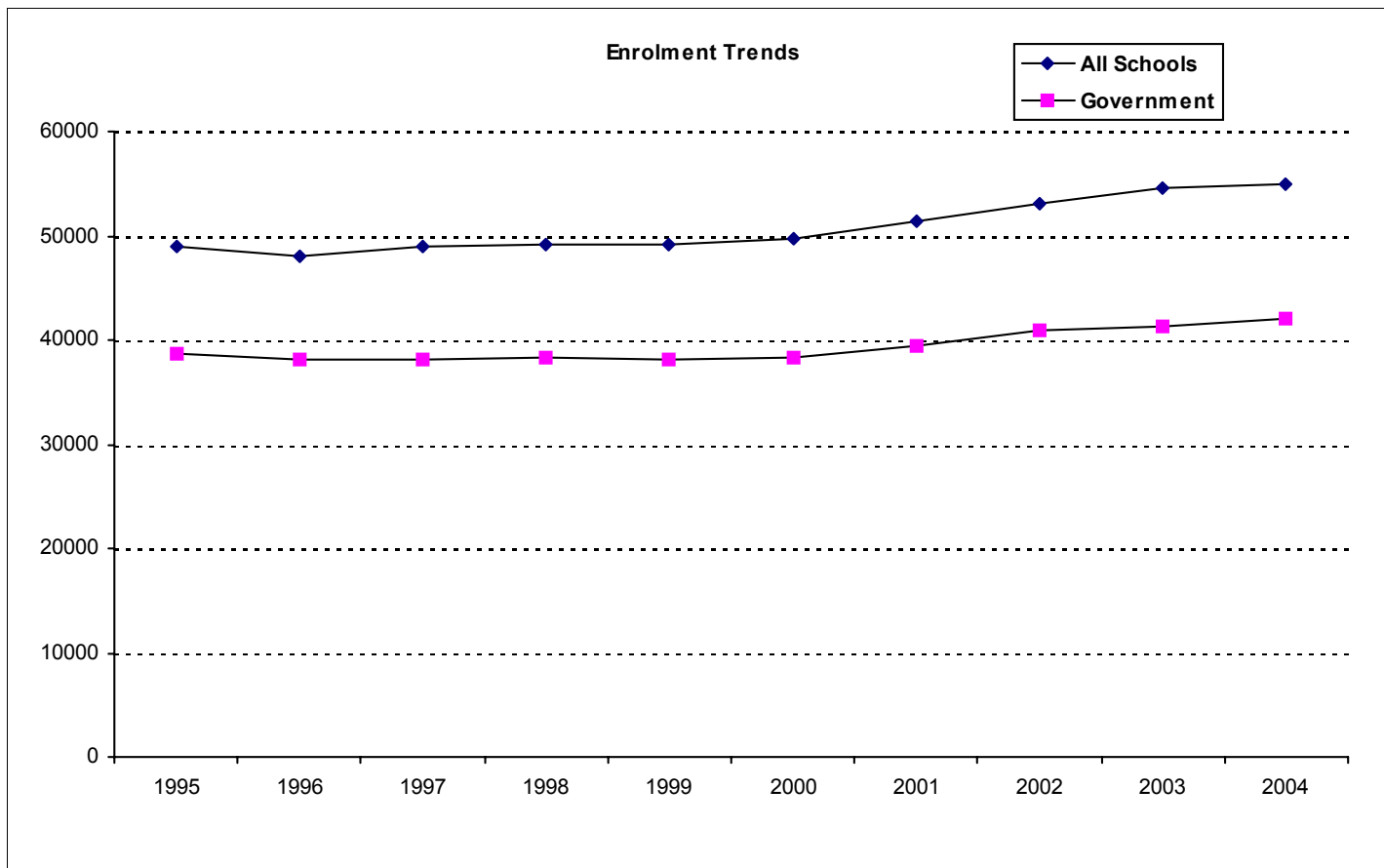


School enrolments for all schools

Year	Primary									Secondary						TOTAL	% Increase
	1	2	3	4	5	6	7	8	Total	9	10	11	12	13	Total		
1995	5,055	4,638	4,416	4,557	4,309	4,187	4,105	4,475	35,742	3,909	3,172	3,315	1,925	977	13,298	49,040	
1996	4,961	4,549	4,577	4,409	4,388	4,076	4,026	4,300	35,286	3,400	3,343	3,046	2,111	804	12,704	47,990	-2
1997	5,281	4,417	4,470	4,523	4,304	4,295	3,996	4,330	35,616	3,451	3,221	3,314	2,428	997	13,411	49,027	2
1998	5,359	4,697	4,340	4,471	4,319	4,256	4,090	4,295	35,827	3,371	3,119	3,127	2,473	1,271	13,361	49,188	0
1999	5,290	4,790	4,572	4,245	4,330	4,216	3,953	4,293	35,689	3,469	3,153	3,049	2,548	1,325	13,544	49,233	0
2000	5,383	4,874	4,848	4,522	4,134	4,265	4,038	4,228	36,292	3,615	3,128	2,862	2,532	1,278	13,415	49,707	1
2001	5,802	5,001	4,830	4,876	4,480	4,214	4,192	4,310	37,705	3,643	3,265	2,811	2,569	1,395	13,683	51,388	3
2002	5,987	5,172	5,112	4,982	4,757	4,520	4,167	4,249	38,946	3,726	3,320	2,864	2,829	1,420	14,159	53,105	3
2003	5,893	5,424	5,119	5,104	4,769	4,750	4,390	4,190	39,639	3,736	3,565	3,044	2,886	1,616	14,847	54,486	3
2004	5,704	5,257	5,383	5,134	5,045	4,652	4,620	4,378	40,173	3,680	3,359	3,153	2,822	1,752	14,766	54,939	1

School enrolments for Government schools

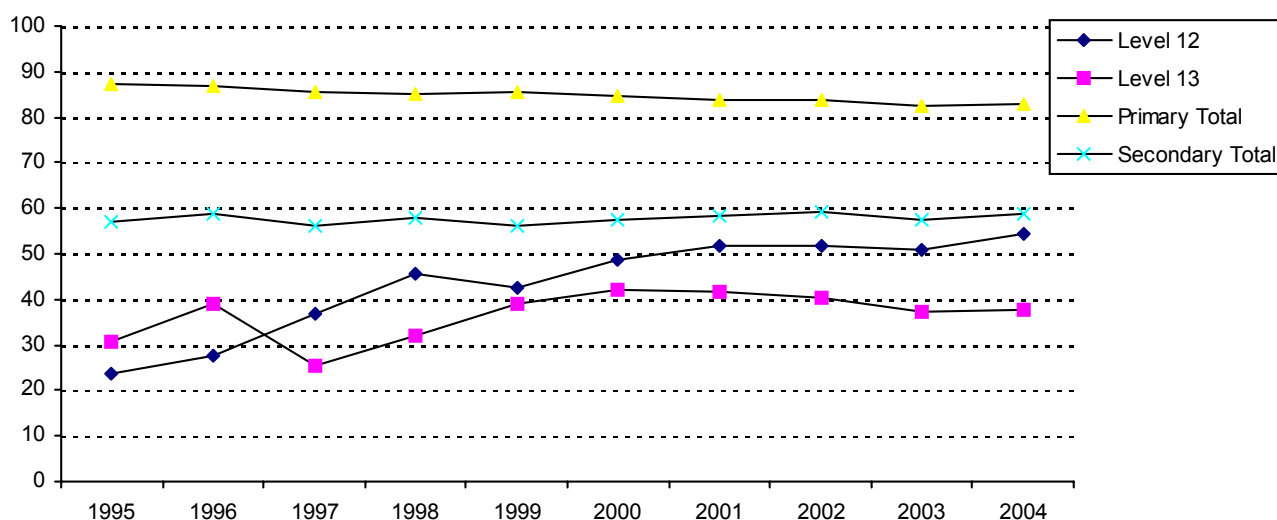
Year	Primary									Secondary						TOTAL	% Increase
	1	2	3	4	5	6	7	8	Total	9	10	11	12	13	Total		
1995	4,471	4,058	3,843	3,958	3,772	3,616	3,562	3,895	31,175	2,636	2,113	2,057	455	300	7,561	38,736	
1996	4,259	3,950	3,978	3,805	3,771	3,573	3,510	3,765	30,611	2,306	2,301	1,948	584	314	7,453	38,064	-2
1997	4,496	3,734	3,821	3,871	3,681	3,694	3,407	3,791	30,495	2,230	2,049	2,121	898	252	7,550	38,045	0
1998	4,534	3,956	3,644	3,794	3,673	3,607	3,576	3,778	30,562	2,218	1,990	1,999	1,126	407	7,740	38,302	1
1999	4,483	4,055	3,856	3,575	3,702	3,588	3,439	3,822	30,520	2,156	1,952	1,875	1,079	520	7,582	38,102	-1
2000	4,487	4,060	4,117	3,800	3,504	3,590	3,468	3,636	30,662	2,276	1,848	1,799	1,231	536	7,690	38,352	1
2001	4,832	4,128	4,000	4,117	3,738	3,529	3,530	3,644	31,518	2,277	2,029	1,760	1,335	580	7,981	39,499	3
2002	5,029	4,330	4,242	4,163	4,009	3,780	3,498	3,580	32,631	2,393	2,116	1,856	1,458	571	8,394	41,025	4
2003	4,899	4,440	4,202	4,163	3,905	3,961	3,655	3,479	32,704	2,366	2,217	1,906	1,463	606	8,558	41,262	1
2004	4,718	4,384	4,461	4,258	4,188	3,875	3,802	3,620	33,306	2,341	2,143	2,023	1,533	663	8,703	42,009	2



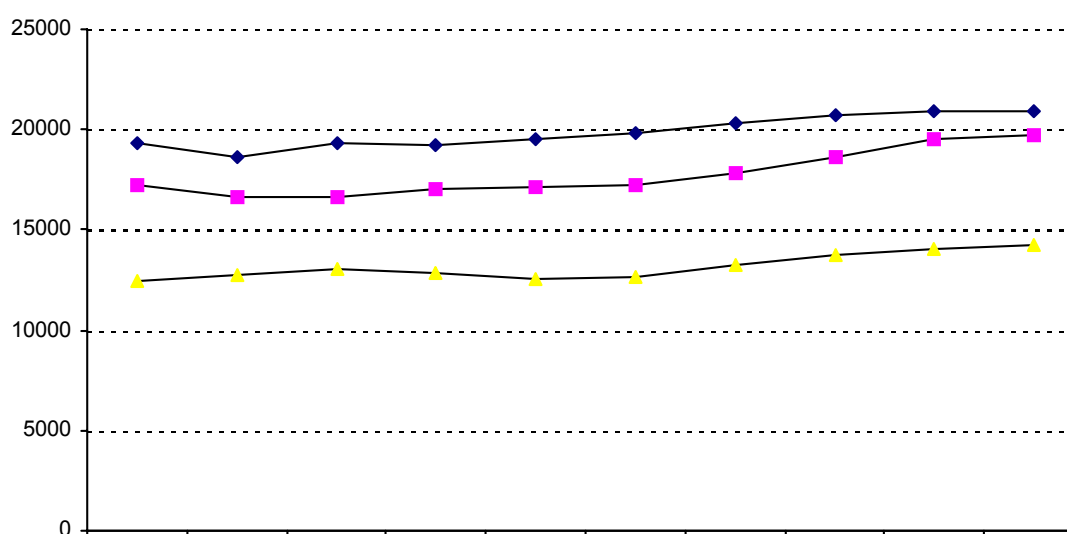
Percentage enrolments in Government schools

Year	Primary									Secondary						TOTAL
	1	2	3	4	5	6	7	8	Total	9	10	11	12	13	Total	
1995	88.4	87.5	87.0	86.9	87.5	86.4	86.8	87.0	87.2	67.4	66.6	62.1	23.6	30.7	56.9	79.0
1996	85.8	86.8	86.9	86.3	85.9	87.7	87.2	87.6	86.8	67.8	68.8	64.0	27.7	39.1	58.7	79.3
1997	85.1	84.5	85.5	85.6	85.5	86.0	85.3	87.6	85.6	64.6	63.6	64.0	37.0	25.3	56.3	77.6
1998	84.6	84.2	84.0	84.9	85.0	84.8	87.4	88.0	85.3	65.8	63.8	63.9	45.5	32.0	57.9	77.9
1999	84.7	84.7	84.3	84.2	85.5	85.1	87.0	89.0	85.5	62.2	61.9	61.5	42.3	39.2	56.0	77.4
2000	83.4	83.3	84.9	84.0	84.8	84.2	85.9	86.0	84.5	63.0	59.1	62.9	48.6	41.9	57.3	77.2
2001	83.3	82.5	82.8	84.4	83.4	83.7	84.2	84.5	83.6	62.5	62.1	62.6	52.0	41.6	58.3	76.9
2002	84.0	83.7	83.0	83.6	84.3	83.6	83.9	84.3	83.8	64.2	63.7	64.8	51.5	40.2	59.3	77.3
2003	83.1	81.9	82.1	81.6	81.9	83.4	83.3	83.0	82.5	63.3	62.2	62.6	50.7	37.5	57.6	75.7
2004	82.7	83.4	82.9	82.9	83.0	83.3	82.3	82.7	82.9	63.6	63.8	64.2	54.3	37.8	58.9	76.5

Percentage enrolments in Government schools



Growth in enrolments, all schools



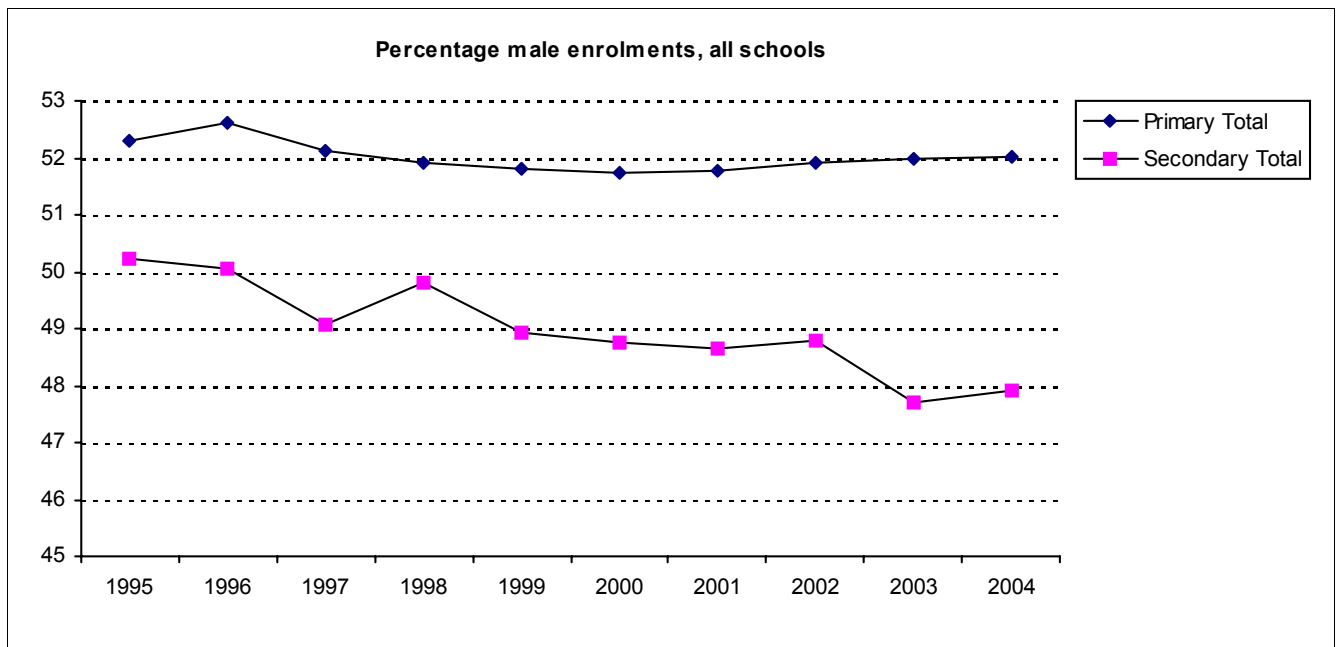
	1995	1996	1997	1998	1999	2000	2001	2002	2003	2004
Apia Urban	19372	18603	19315	19229	19507	19803	20342	20747	20923	20961
Rest of Upolu	17223	16665	16677	17074	17129	17222	17834	18593	19507	19754
Savaii	12445	12722	13035	12885	12597	12682	13212	13765	14056	14224

Male school enrolments, all schools

Year	Primary									Secondary						TOTAL	% Increase
	1	2	3	4	5	6	7	8	Total	9	10	11	12	13	Total		
1995	2,605	2,451	2,289	2,375	2,264	2,259	2,195	2,257	18,695	1,935	1,600	1,708	964	470	6,677	25,372	
1996	2,588	2,345	2,441	2,301	2,297	2,159	2,146	2,292	18,569	1,680	1,628	1,541	1,098	413	6,360	24,929	-2
1997	2,742	2,283	2,278	2,401	2,218	2,239	2,099	2,305	18,565	1,752	1,560	1,608	1,213	449	6,582	25,147	1
1998	2,821	2,438	2,229	2,292	2,260	2,186	2,104	2,272	18,602	1,734	1,617	1,515	1,141	647	6,654	25,256	0
1999	2,774	2,521	2,345	2,219	2,204	2,202	2,032	2,190	18,487	1,784	1,566	1,520	1,153	605	6,628	25,115	-1
2000	2,841	2,513	2,570	2,299	2,136	2,189	2,091	2,131	18,770	1,805	1,528	1,463	1,161	582	6,539	25,309	1
2001	2,964	2,623	2,526	2,592	2,303	2,173	2,124	2,220	19,525	1,802	1,583	1,422	1,195	655	6,657	26,182	3
2002	3,105	2,634	2,684	2,587	2,531	2,345	2,149	2,180	20,215	1,896	1,625	1,440	1,327	618	6,906	27,121	4
2003	3,111	2,833	2,606	2,678	2,440	2,531	2,261	2,144	20,604	1,838	1,730	1,472	1,338	705	7,083	27,687	2
2004	2,974	2,776	2,832	2,629	2,638	2,373	2,436	2,237	20,895	1,844	1,598	1,549	1,319	766	7,076	27,971	1

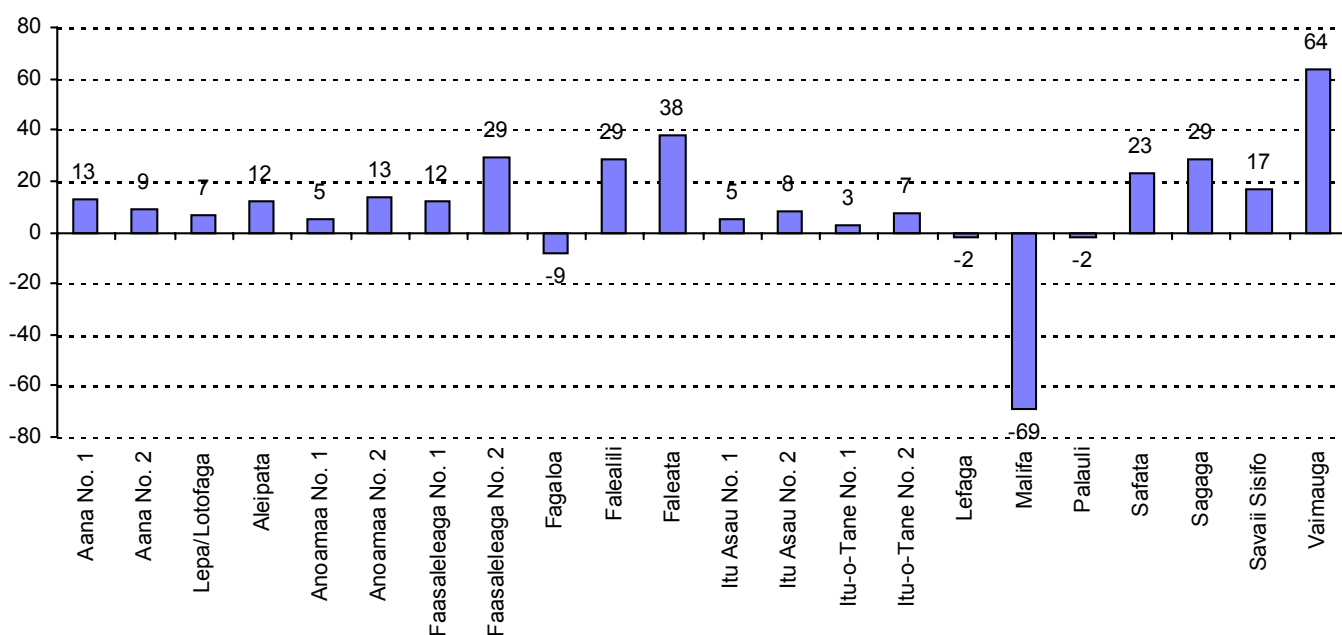
Percentage male enrolments, all schools

Year	Primary									Secondary						TOTAL
	1	2	3	4	5	6	7	8	Total	9	10	11	12	13	Total	
1995	51.5	52.8	51.8	52.1	52.5	54.0	53.5	50.4	52.3	49.5	50.4	51.5	50.1	48.1	50.2	51.7
1996	52.2	51.5	53.3	52.2	52.3	53.0	53.3	53.3	52.6	49.4	48.7	50.6	52.0	51.4	50.1	51.9
1997	51.9	51.7	51.0	53.1	51.5	52.1	52.5	53.2	52.1	50.8	48.4	48.5	50.0	45.0	49.1	51.3
1998	52.6	51.9	51.4	51.3	52.3	51.4	51.4	52.9	51.9	51.4	51.8	48.4	46.1	50.9	49.8	51.3
1999	52.4	52.6	51.3	52.3	50.9	52.2	51.4	51.0	51.8	51.4	49.7	49.9	45.3	45.7	48.9	51.0
2000	52.8	51.6	53.0	50.8	51.7	51.3	51.8	50.4	51.7	49.9	48.8	51.1	45.9	45.5	48.7	50.9
2001	51.1	52.4	52.3	53.2	51.4	51.6	50.7	51.5	51.8	49.5	48.5	50.6	46.5	47.0	48.7	50.9
2002	51.9	50.9	52.5	51.9	53.2	51.9	51.6	51.3	51.9	50.9	48.9	50.3	46.9	43.5	48.8	51.1
2003	52.8	52.2	50.9	52.5	51.2	53.3	51.5	51.2	52.0	49.2	48.5	48.4	46.4	43.6	47.7	50.8
2004	52.1	52.8	52.6	51.2	52.3	51.0	52.7	51.1	52.0	50.1	47.6	49.1	46.7	43.7	47.9	50.9



School enrolments by district and maximum level provided, 2004

Region/District	Primary Enrolments, all schools			Secondary enrolments, all schools			Max level in 1994		Max level in 2004	
	1994	2004	% Increase	1994	2004	% Increase	Govt	Non-Govt	Govt	Non-Govt
Faleata	4202	6401	52	2409	2735	14	11	13	12	13
Malifa	4223	305	-93	1471	1473	0	12		13	
Vaimauga	4142	7152	73	1990	2895	45	13	13	13	13
Apia Urban Total	12567	13858	10	5870	7103	21	13	13	13	13
Aana No. 1	2303	2742	19	760	720	-5	11	12	12	12
Aana No. 2	1600	1656	4	227	337	48	11		12	
Aleipata	915	1027	12	246	270	10	11		12	
Anoamaa No. 1	767	736	-4	156	236	51	11		12	
Anoamaa No. 2	936	1062	13				8	8	8	8
Fagaloa	252	257	2	40	10	-75	11		11	
Falealili	1472	1722	17	342	611	79	11		13	
Lefaga	656	664	1	113	87	-23	11		12	
Lepa/Lotofaga	795	789	-1	213	285	34	11		13	
Safata	1235	1489	21	171	236	38	11		12	
Sagaga	2433	3362	38	1315	1456	11	11	13	12	13
Rest of Upolu Total	13364	15506	16	3583	4248	19	11	13	13	13
Faasaleleaga No. 1	1850	2230	21	1043	1014	-3	11	13	12	13
Faasaleleaga No. 2	791	934	18	169	304	80	11		12	
Itu Asau No. 1	983	897	-9	217	366	69	11		12	
Itu Asau No. 2	652	707	8				8		8	
Itu-o-Tane No. 1	839	909	8	505	470	-7	13		13	
Itu-o-Tane No. 2	1101	1110	1	217	301	39	11		12	
Palauli	1818	2016	11	771	522	-32	11	13	12	13
Savaii Sisifo	1764	2006	14	326	438	34	11		12	
Savaii Total	9798	10809	10	3248	3415	5	13	13	13	13
Grand Total	35729	40173	12	12701	14766	16	13	13	13	13

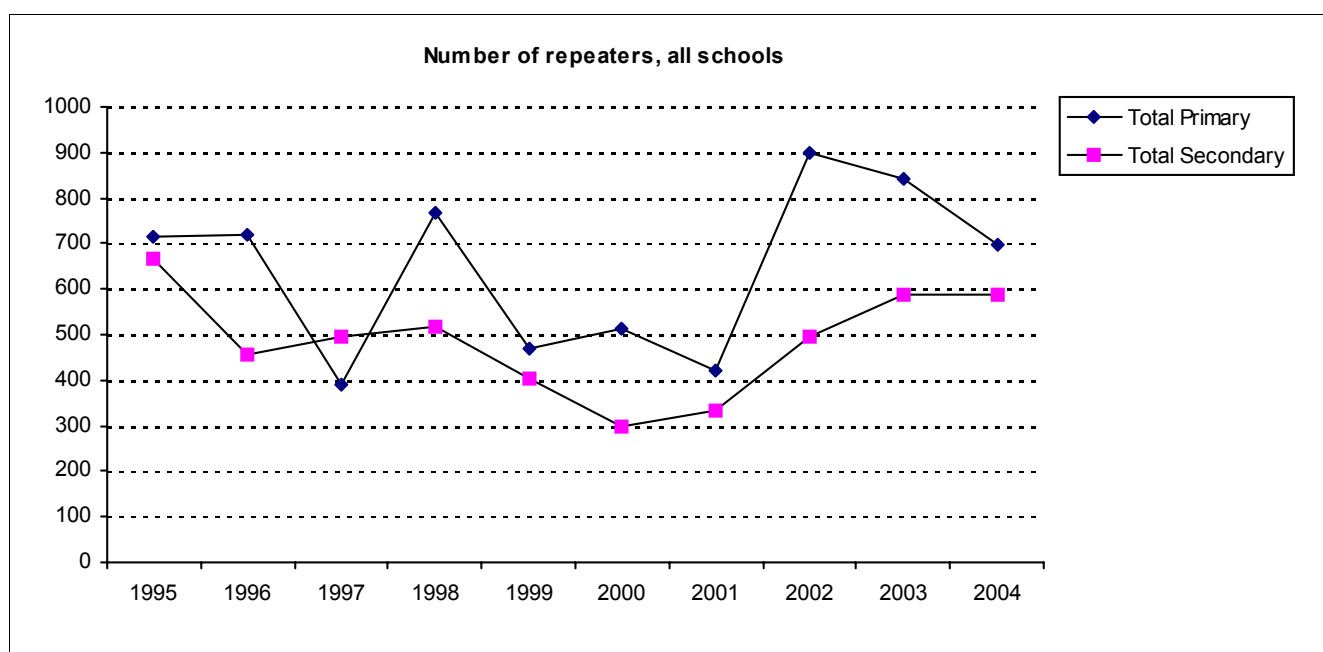
Percentage growth in enrolments since 1994, all schools


Number of repeaters by level in 2004

Level	Number of Repeaters				Percentage of Enrolment			
	Government	Mission	Private	Total	Government	Mission	Private	Total
1	215	17	2	234	4.6	2.3	0.8	4.1
2	60	9	0	69	1.4	1.3	0.0	1.3
3	44	6	1	51	1.0	0.9	0.4	0.9
4	49	6	0	55	1.2	0.9	0.0	1.1
5	54	7	2	63	1.3	1.1	1.0	1.2
6	35	8	0	43	0.9	1.3	0.0	0.9
7	26	7	0	33	0.7	1.0	0.0	0.7
8	128	18	2	148	3.5	2.8	1.9	3.4
Total Primary	611	78	7	696	1.8	1.4	0.5	1.7
9	7	2	0	9	0.3	0.2	0.0	0.2
10	9	23	0	32	0.4	2.0	0.0	1.0
11	80	32		112	4.0	2.8		3.6
12	163	176	0	339	10.6	14.3	0.0	12.0
13	30	63	3	96	4.5	6.1	5.5	5.5
Total Secondary	289	296	3	588	3.3	5.1	1.2	4.0
Total	900	374	10	1,284	2.1	3.3	0.6	2.3

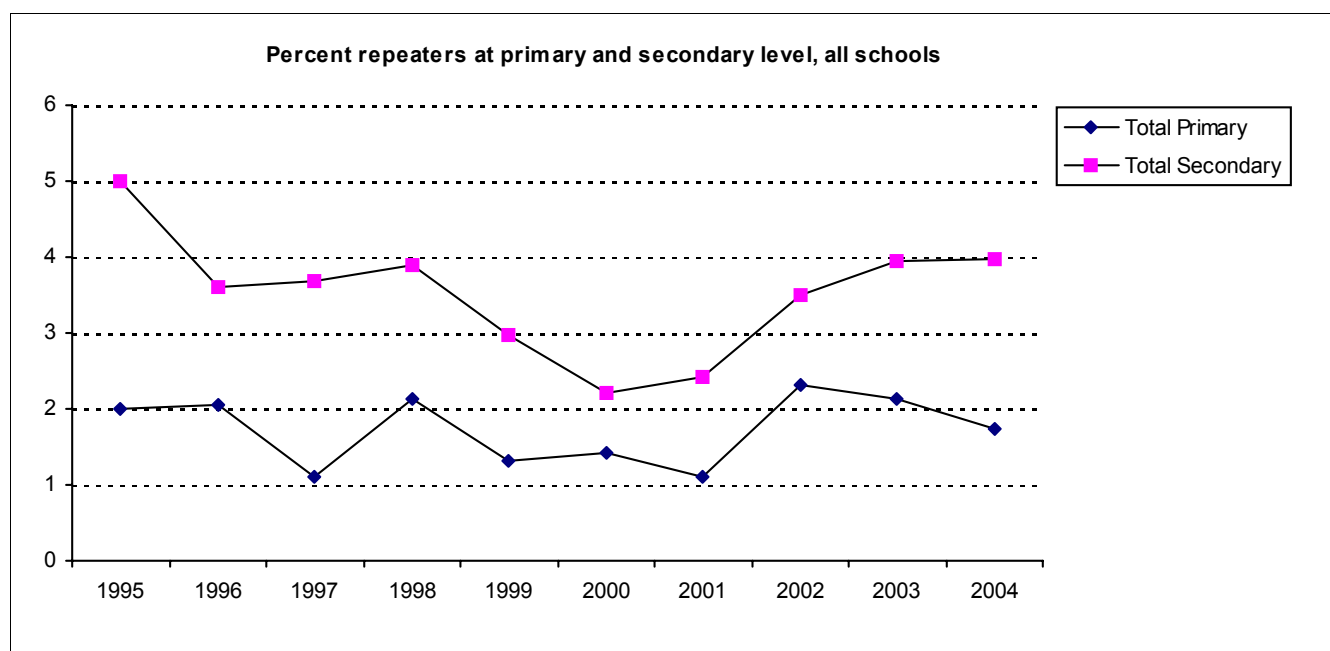
Repeaters in all schools by level

Year	Primary									Secondary						TOTAL
	1	2	3	4	5	6	7	8	Total	9	10	11	12	13	Total	
1995	189	70	63	81	66	53	60	131	713	12	36	291	208	118	665	1,378
1996	142	90	73	72	60	49	57	178	721	9	17	165	227	40	458	1,179
1997	96	32	26	27	27	25	19	140	392	28	25	275	122	45	495	887
1998	193	81	32	36	45	35	47	297	766	18	22	221	203	55	519	1,285
1999	150	35	20	24	21	16	17	188	471	16	12	183	154	38	403	874
2000	125	47	35	22	20	33	37	192	511	6	11	111	123	46	297	808
2001	142	36	20	29	26	12	34	122	421	15	14	112	113	78	332	753
2002	306	88	69	83	66	47	53	188	900	20	12	87	264	112	495	1,395
2003	345	70	58	66	40	62	45	155	841	19	8	139	279	143	588	1,429
2004	234	69	51	55	63	43	33	148	696	9	32	112	339	96	588	1,284



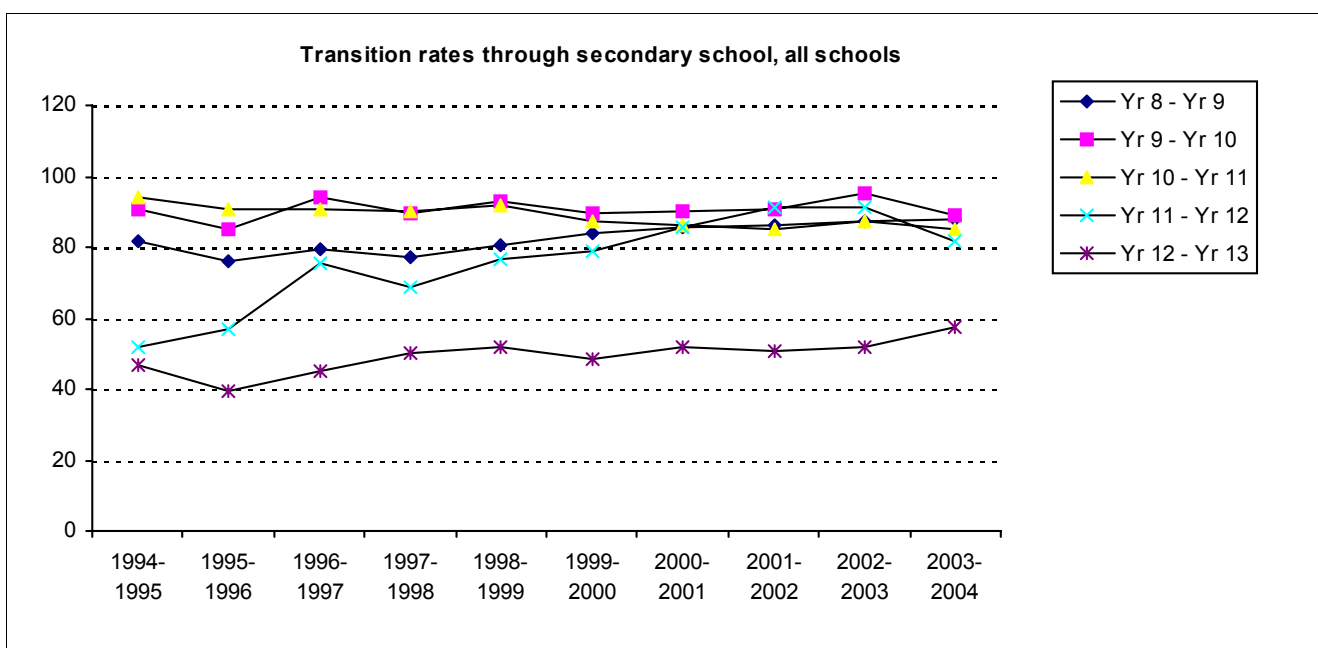
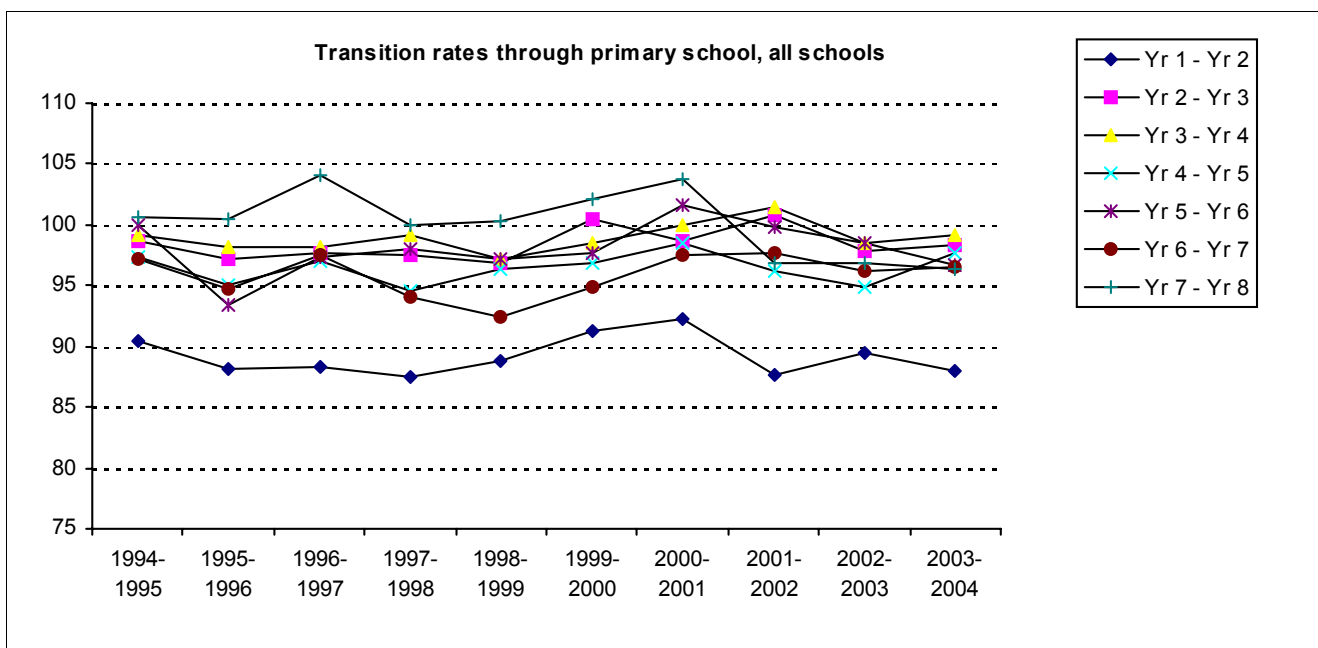
Percentage of repeaters in all schools by level

Year	Primary									Secondary						TOTAL
	1	2	3	4	5	6	7	8	Total	9	10	11	12	13	Total	
1995	3.7	1.5	1.4	1.8	1.5	1.3	1.5	2.9	2.0	0.3	1.1	8.8	10.8	12.1	5.0	2.8
1996	2.9	2.0	1.6	1.6	1.4	1.2	1.4	4.1	2.0	0.3	0.5	5.4	10.8	5.0	3.6	2.5
1997	1.8	0.7	0.6	0.6	0.6	0.6	0.5	3.2	1.1	0.8	0.8	8.3	5.0	4.5	3.7	1.8
1998	3.6	1.7	0.7	0.8	1.0	0.8	1.1	6.9	2.1	0.5	0.7	7.1	8.2	4.3	3.9	2.6
1999	2.8	0.7	0.4	0.6	0.5	0.4	0.4	4.4	1.3	0.5	0.4	6.0	6.0	2.9	3.0	1.8
2000	2.3	1.0	0.7	0.5	0.5	0.8	0.9	4.5	1.4	0.2	0.4	3.9	4.9	3.6	2.2	1.6
2001	2.4	0.7	0.4	0.6	0.6	0.3	0.8	2.8	1.1	0.4	0.4	4.0	4.4	5.6	2.4	1.5
2002	5.1	1.7	1.3	1.7	1.4	1.0	1.3	4.4	2.3	0.5	0.4	3.0	9.3	7.9	3.5	2.6
2003	5.9	1.3	1.1	1.3	0.8	1.3	1.0	3.7	2.1	0.5	0.2	4.6	9.7	8.8	4.0	2.6
2004	4.1	1.3	0.9	1.1	1.2	0.9	0.7	3.4	1.7	0.2	1.0	3.6	12.0	5.5	4.0	2.3



Transition rates by year level

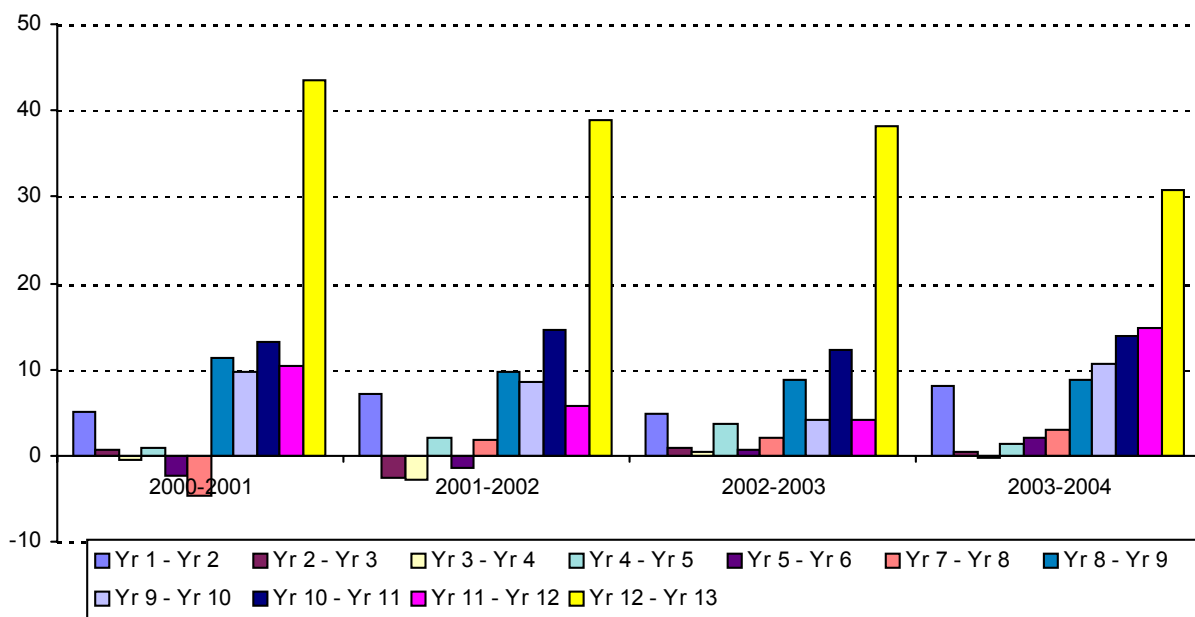
Year	Year Levels											
	1-2	2-3	3-4	4-5	5-6	6-7	7-8	8-9	9-10	10-11	11-12	12-13
1994-1995	90	99	99	97	100	97	101	82	90	94	52	47
1995-1996	88	97	98	95	93	95	100	76	85	91	57	40
1996-1997	88	98	98	97	97	98	104	80	94	91	76	45
1997-1998	87	98	99	94	98	94	100	77	90	90	68	50
1998-1999	89	97	97	96	97	92	100	80	93	92	77	52
1999-2000	91	100	98	97	98	95	102	84	90	87	79	48
2000-2001	92	99	100	98	102	97	104	86	90	86	86	52
2001-2002	88	101	101	96	100	98	97	86	91	85	91	51
2002-2003	89	98	99	95	99	96	97	87	95	88	91	52
2003-2004	88	98	99	98	97	97	96	88	89	85	82	57



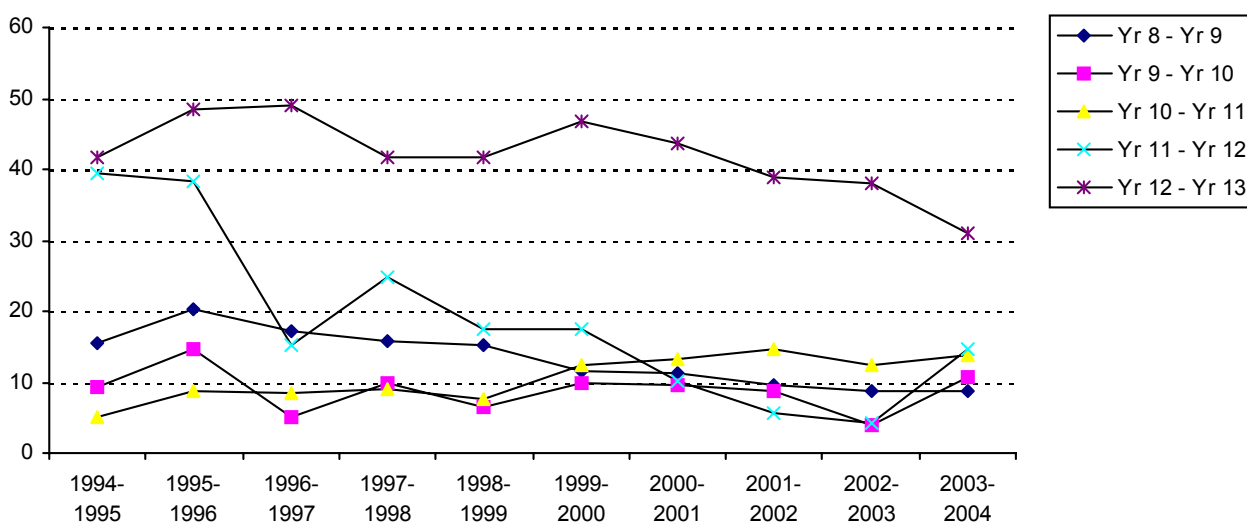
Dropout rates (percentage) by year level

Year	Year Levels											
	1-2	2-3	3-4	4-5	5-6	6-7	7-8	8-9	9-10	10-11	11-12	12-13
1994-1995	6	0	-1	1	-2	2	-2	16	9	5	40	42
1995-1996	9	1	0	3	5	4	-2	20	15	9	38	49
1996-1997	10	2	1	2	2	2	-5	17	5	8	15	49
1997-1998	9	1	0	5	1	5	-1	16	10	9	25	42
1998-1999	8	2	2	3	2	7	-1	15	6	8	18	42
1999-2000	6	-1	1	3	2	4	-3	11	10	12	17	47
2000-2001	5	1	0	1	-2	2	-5	11	10	13	10	44
2001-2002	7	-3	-3	2	-1	1	2	10	9	15	6	39
2002-2003	5	1	0	4	1	3	2	9	4	12	4	38
2003-2004	8	0	0	1	2	3	3	9	11	14	15	31

Dropout rates (percentage), all schools

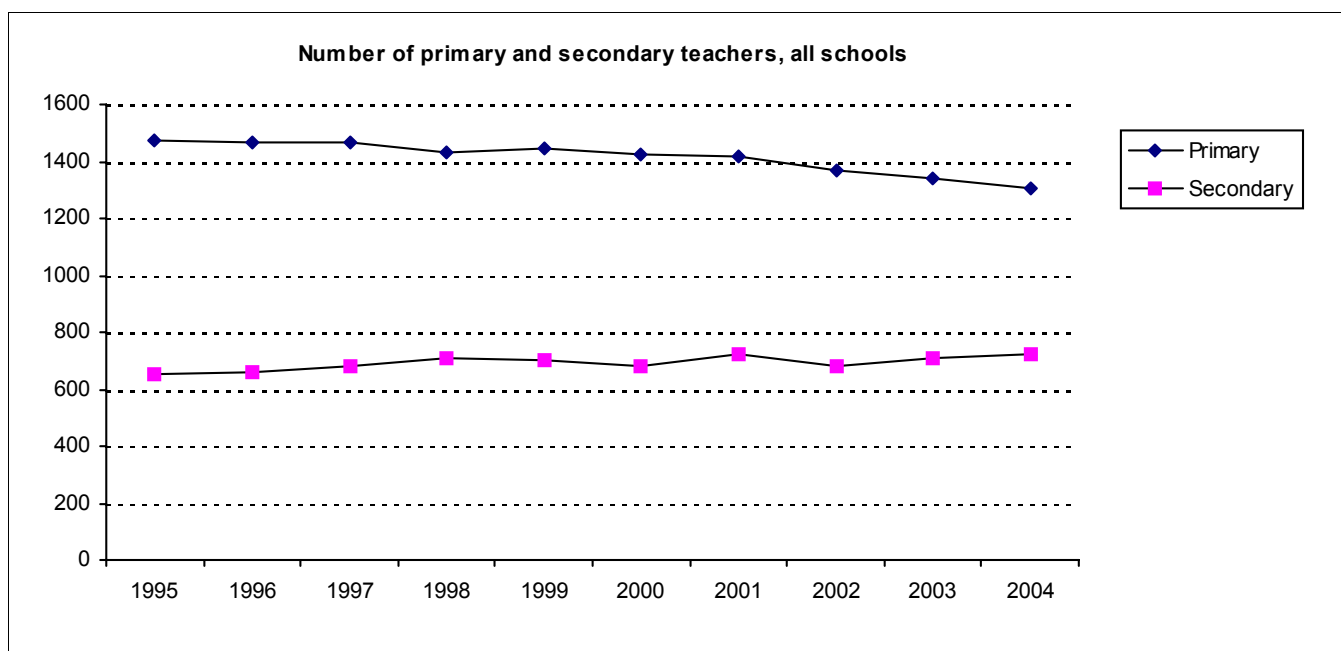


Dropout rates (percentage) through secondary school, all schools



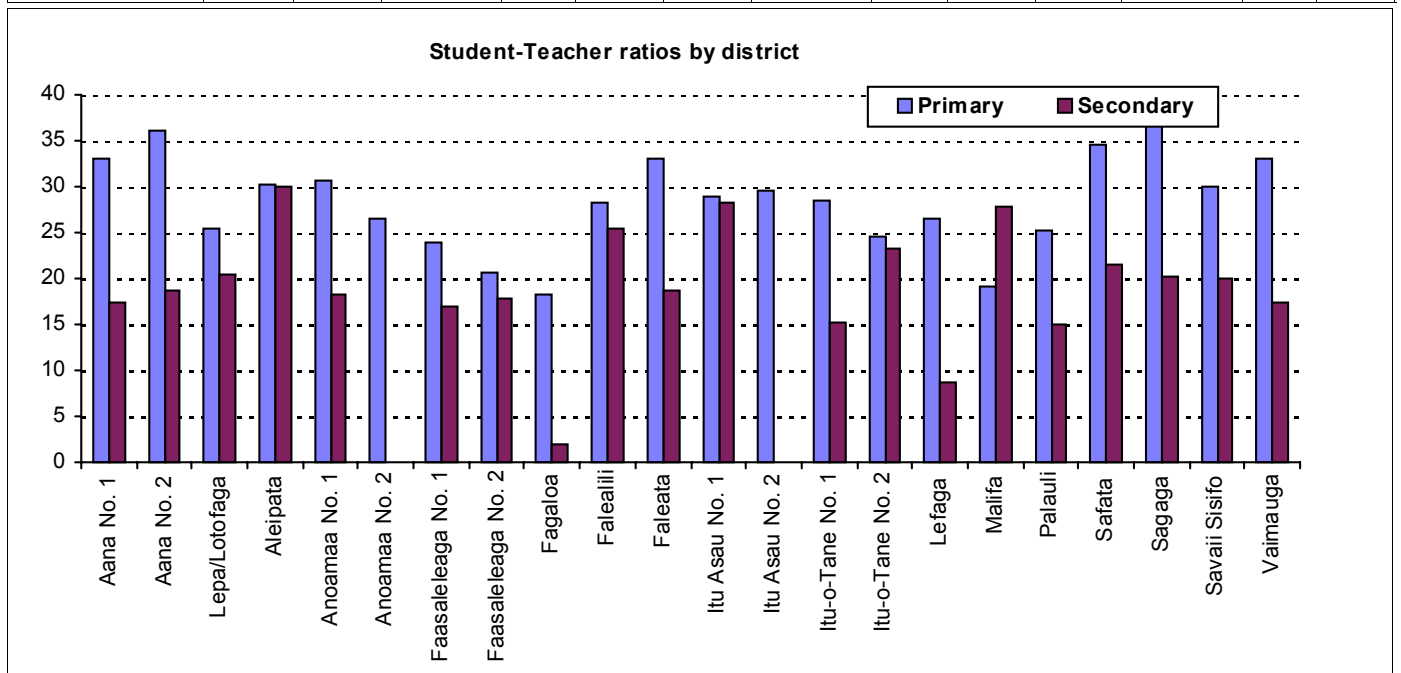
Number of teachers by school type and district, 2004

Region/District	Government				Mission				Private				TOTAL
	Primary	Pri-Sec	Second.	Total	Primary	Pri-Sec	Second.	Total	Primary	Pri-Sec	Second.	Total	
Apia Urban													
Faleata	127		24	151	12	47	73	132	46	3	14	63	346
Malifa	16		53	69									69
Vaimauga	120		112	232	57	31	55	143	22			22	397
Apia Urban Total	263		189	452	69	78	128	275	68	3	14	85	812
Rest of Upolu													
Aana No. 1	63		17	80	17		30	47					127
Aana No. 2	46		18	64									64
Aleipata	34		9	43									43
Anoamaa No. 1	24		13	37									37
Anoamaa No. 2	25			25	15			15					40
Fagaloa	14	5		19									19
Falealili	61		24	85									85
Lefaga	25		10	35									35
Lepa/Lotofaga	31		14	45									45
Safata	43		11	54									54
Sagaga	62		15	77	29		57	86					163
Rest of Upolu Total	428	5	131	564	61		87	148					712
Savaii													
Faasaleleaga No. 1	67		19	86	24	21	23	68					154
Faasaleleaga No. 2	45		17	62									62
Itu Asau No. 1	31		13	44									44
Itu Asau No. 2	24			24									24
Itu-o-Tane No. 1	32		31	63									63
Itu-o-Tane No. 2	45		13	58									58
Palauli	80		15	95			20	20					115
Savaii Sisifo	67		22	89									89
Savaii Total	391		130	521	24	21	43	88					609
Grand Total	1082	5	450	1537	154	99	258	511	68	3	14	85	2133



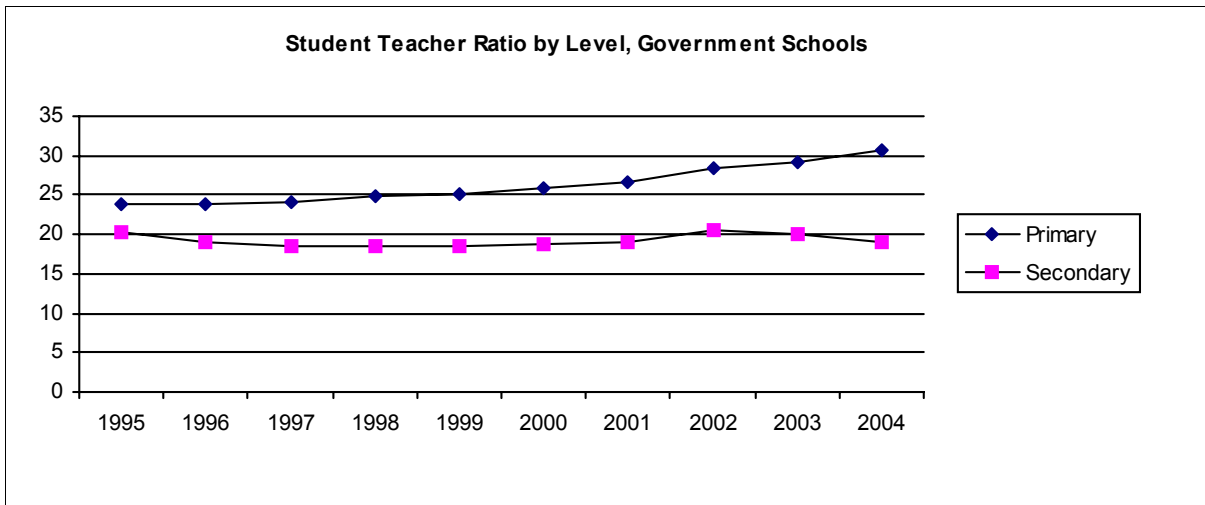
Student-Teacher ratios by school type and district, 2004

Region/District	Government				Mission				Private				Total
	Primary	Pri-Sec	Secondary	Total	Primary	Pri-Sec	Secondary	Total	Primary	Pri-Sec	Secondary	Total	
Apia Urban													
Faleata	38		14	34	30	16	22	21	21	10	20	20	26
Malifa	19		28	26									26
Vaimauga	34		17	25	37	22	17	26	20			20	25
Apia Urban Total	35		19	28	36	18	20	23	20	10	20	20	26
Rest of Upolu													
Aana No. 1	36		15	32	20		19	19					27
Aana No. 2	36		19	31									31
Aleipata	30		30	30									30
Anoamaa No. 1	31		18	26									26
Anoamaa No. 2	29			29	22			22					27
Fagaloa	18	2		14									14
Falealili	28		25	27									27
Lefaga	27		8.7	21									21
Lepa/Lotofaga	25		20	24									24
Safata	35		21	32									32
Sagaga	40		11	35	30		23	25					30
Rest of Upolu Total	32	2	19	29	25		21	23					28
Savaii													
Faasaleleaga No. 1	25		18	24	20	21	13	18					21
Faasaleleaga No. 2	21		18	20									20
Itu Asau No. 1	29		28	29									29
Itu Asau No. 2	29			29									29
Itu-o-Tane No. 1	28		15	22									22
Itu-o-Tane No. 2	25		23	24									24
Palauli	25		21	25			10	10					22
Savaii Sisifo	30		20	27									27
Savaii Total	26		20	25	20	21	12	16					23
Grand Total	31	2	19	27	29	19	19	22	20	10	20	20	26



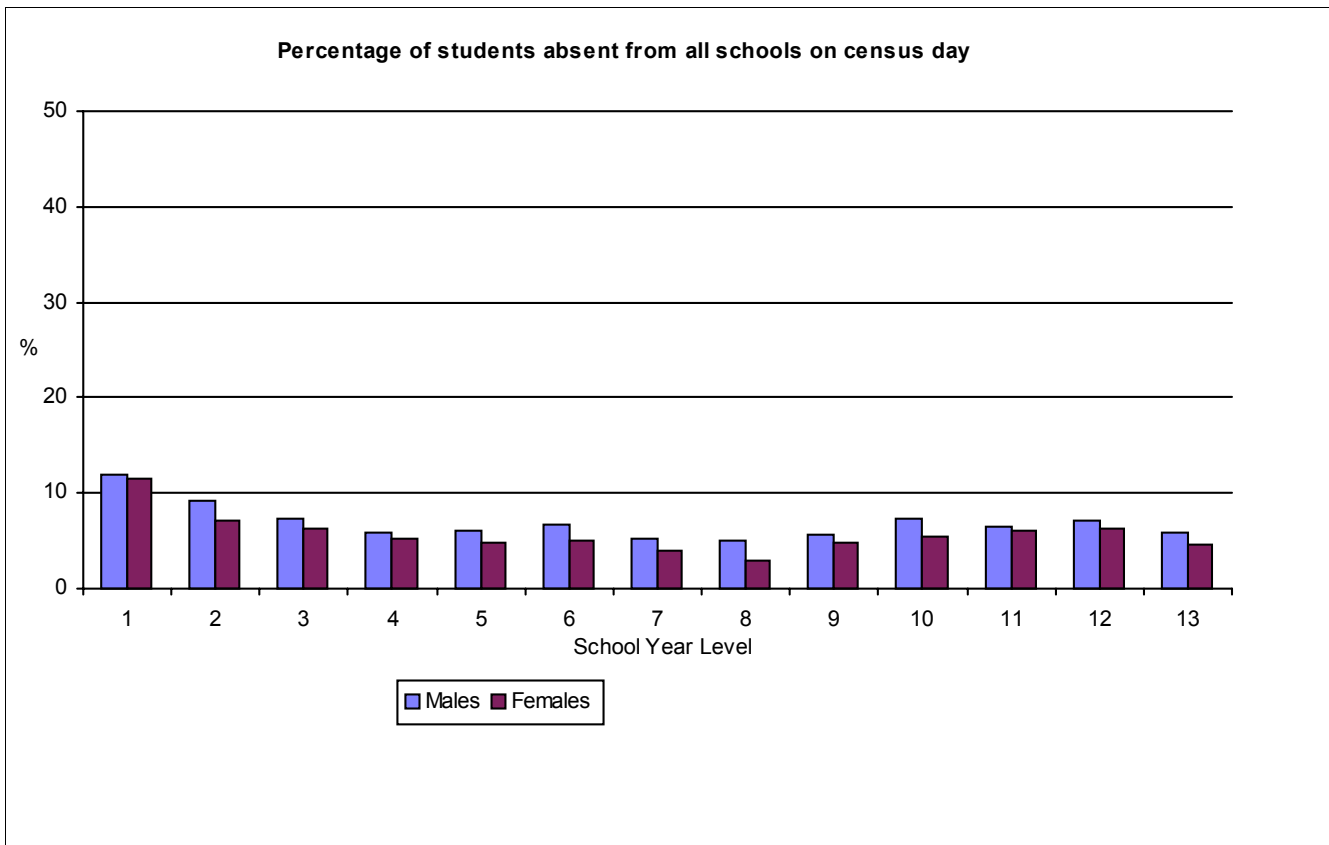
Student Teacher Ratio by Level, Government Schools

Level	Primary Student Teacher Ratio	Secondary Student Teacher Ratio
1995	23.9	20.3
1996	23.8	18.9
1997	24.0	18.6
1998	24.9	18.6
1999	25.0	18.5
2000	25.9	18.8
2001	26.7	18.9
2002	28.4	20.6
2003	29.2	19.9
2004	30.8	19.1



Number of students absent of Census Day

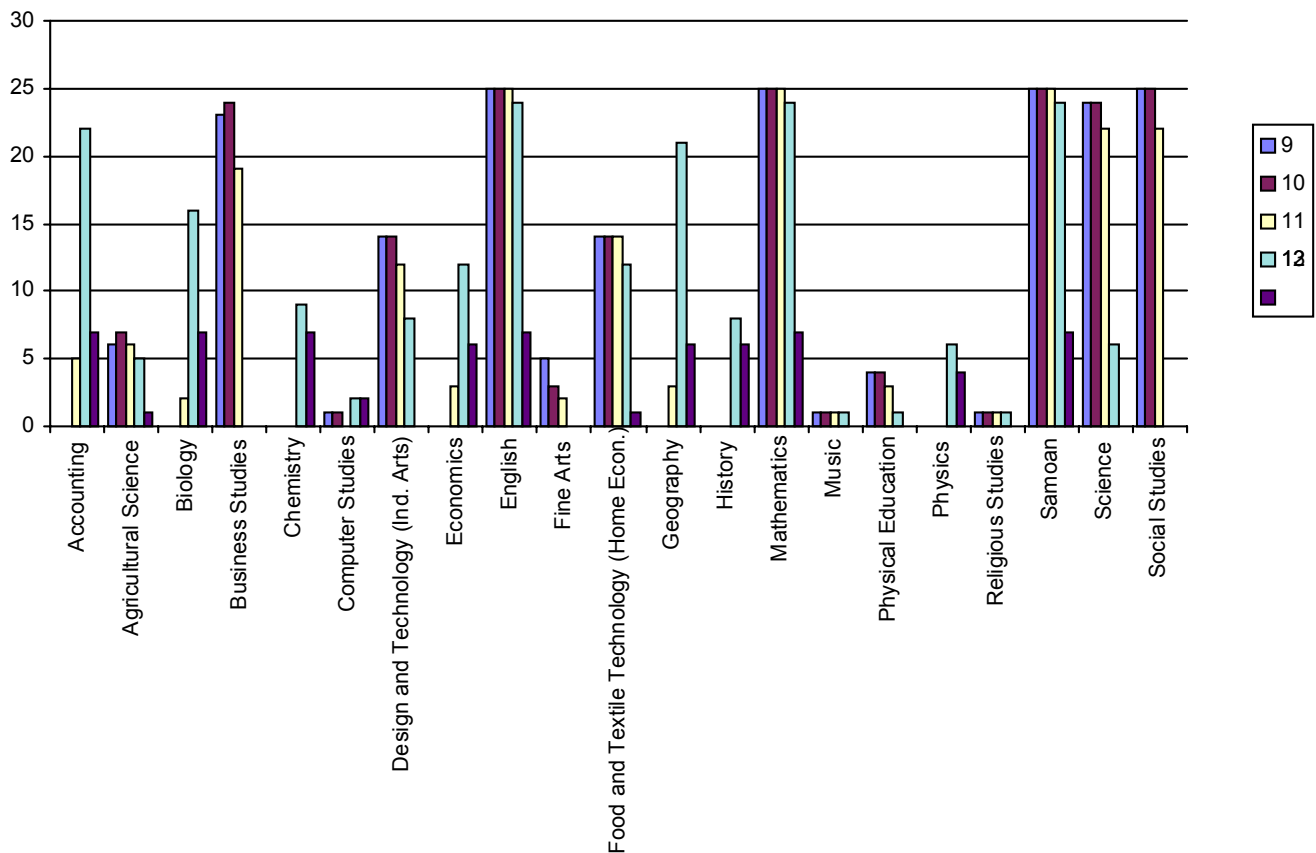
Level	Student Enrolments			No. of students absent			% Absentees		
	Males	Females	Total	Males	Females	Total	Males	Females	Total
1	2,974	2,730	5,704	353	314	667	11.9	11.5	11.7
2	2,776	2,481	5,257	255	177	432	9.2	7.1	8.2
3	2,832	2,551	5,383	207	159	366	7.3	6.2	6.8
4	2,629	2,505	5,134	156	132	288	5.9	5.3	5.6
5	2,638	2,407	5,045	159	117	276	6.0	4.9	5.5
6	2,373	2,279	4,652	159	115	274	6.7	5.0	5.9
7	2,436	2,184	4,620	126	89	215	5.2	4.1	4.7
8	2,237	2,141	4,378	113	64	177	5.1	3.0	4.0
9	1,844	1,836	3,680	104	88	192	5.6	4.8	5.2
10	1,598	1,761	3,359	117	94	211	7.3	5.3	6.3
11	1,549	1,604	3,153	99	98	197	6.4	6.1	6.2
12	1,319	1,503	2,822	94	93	187	7.1	6.2	6.6
13	766	986	1,752	45	46	91	5.9	4.7	5.2



Number of Government Secondary Schools Teaching Curriculum Subjects by Level

Subject	School Year Level					
	9	10	11	12	13	Total
Accounting			5	22	7	22
Agricultural Science	6	7	6	5	1	7
Biology			2	16	7	16
Business Studies	23	24	19			24
Chemistry				9	7	9
Computer Studies	1	1		2	2	2
Design and Technology (Ind. Arts)	14	14	12	8		14
Economics			3	12	6	12
English	25	25	25	24	7	25
Fine Arts	5	3	2			5
Food and Textile Technology (Home Econ.)	14	14	14	12	1	14
Geography			3	21	6	21
History				8	6	8
Mathematics	25	25	25	24	7	25
Music	1	1	1	1		1
Physical Education	4	4	3	1		4
Physics				6	4	6
Religious Studies	1	1	1	1		1
Samoan	25	25	25	24	7	25
Science	24	24	22	6		24
Social Studies	25	25	22			25

Number of Government Schools teaching curriculum subjects



Primary school facilities by Controlling Authority, 2004

Controlling Authority	Facilities							
	Enrolment	Classrooms	Student Desks	Student Chairs	Computers	TVs	Telephones	Photocopiers
Baptist	238	14	185	185	0	0	1	1
Catholic	3,504	84	3,726	3,729	27	6	9	6
Government	33,306	1,391	22,221	20,294	57	4	38	18
L.D.S.	255	36	956	956	12	6	6	3
Methodist	402	11	191	191	1	1	1	1
Peace Chapel	239	12	26	220	3	1	2	1
S.D.A.	85	12	399	401	8	0	2	1
School Board/Com	1,149	44	856	856	15	2	9	3
Total	39,178	1,604	28,560	26,832	123	20	68	34

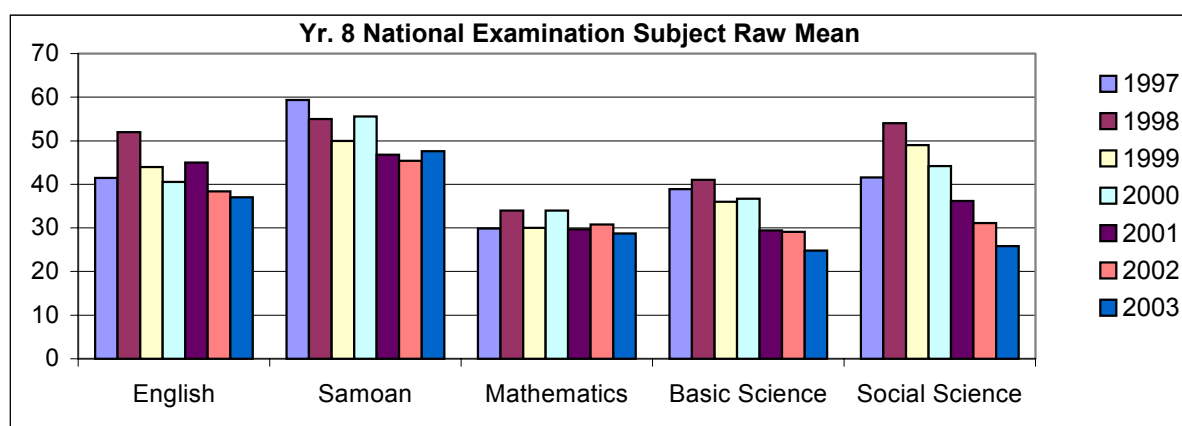
Secondary school facilities by Controlling Authority, 2004

Controlling Authority	Facilities							
	Enrolment	Classrooms	Student Desks	Student Chairs	Computers	TVs	Telephones	Photocopiers
Baptist	245	15	354	354	1	1	2	1
C.C.C.S.	2,152	70	2,617	2,599	46	2	7	6
Catholic	1,892	77	2,556	2,564	92	7	13	7
Government	8,703	290	7,256	7,119	58	6	19	13
L.D.S.	1,171	55	1,190	1,989	117	24	13	5
Methodist	850	46	1,127	418	27	3	4	3
S.D.A.	444	16	650	650	34	1	5	3
School Board/Com	304	10	270	270	27	1	3	1
Total	15,761	579	16,020	15,963	402	45	66	39

Part 2 – Data from sources other than School Census Information System

**Average raw score at National Year 8 Examinations
All (Government and Non-Government) for Core subjects¹**

Subject	1997	1998	1999	2000	2001	2002	2003
English	42	52	44	41	45	38	37
Samoan	59	55	50	56	47	45	47.6
Mathematics	30	34	30	34	30	31	28.7
Basic Science	39	41	36	37	29	29	24.8
Social Science	42	54	49	44	36	31	25.8



Number of Students sitting Year 8 exams

Subject	1997	1998	1999	2000	2001	2002	2003
English	3,927	3,939	4,048	3,983	3,971	3850	3816
Samoan	3,899	3,887	4,020	3,934	3,930	3854	3789
Mathematics	3,929	3,941	4,048	3,984	3,977	3831	3816
Science	3,927	3,937	4,048	3,982	3,972	3854	3816
Social Science	3,927	3,938	4,048	3,984	3,971	3849	3816

**Percentage of Year 8 Students² that sat the Year 8 Exam
All Students (Government and Non-Government)**

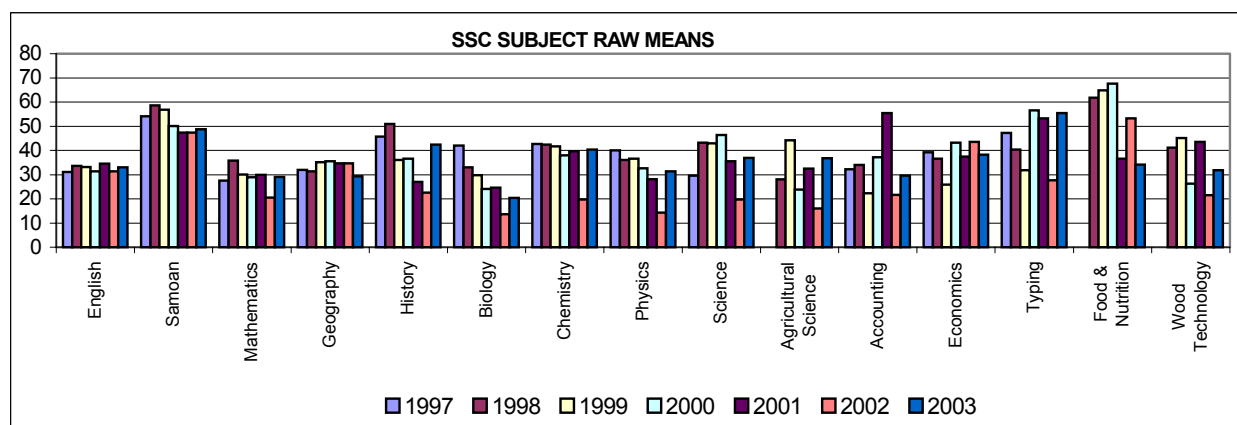
Subject	1997	1998	1999	2000	2001	2002	2003
English	93%	93%	95%	94%	92%	91%	90%
Samoan	92%	91%	94%	93%	91%	91%	89%
Mathematics	93%	93%	95%	94%	92%	90%	90%
Science	93%	92%	95%	94%	92%	91%	90%
Social Science	93%	92%	95%	94%	92%	91%	90%

¹ Data at this stage is not available disaggregated by location etc. (This is required to calculate performance measures 1.2 and 1.4 of the Performance Framework)

² The percentage of Year 8 students sitting Year 8 exams is a measure of Year 8 completion rates.

**Average raw score at National Year 12 examination
All (Government and Non-Government) for all subjects³**

Subject	1997	1998	1999	2000	2001	2002	2003	Students sitting exam 2003
English	31	34	33	31	35	31	33.0	2441
Samoan	54	59	57	50	47	47	48.8	1942
Mathematics	28	36	30	29	30	21	29.0	2199
Geography	32	31	35	36	35	35	29.3	1067
History	46	51	36	37	27	23	42.4	325
Biology	42	33	30	24	25	14	20.4	546
Chemistry	43	42	42	38	40	20	40.4	214
Physics	40	36	37	33	28	14	31.3	194
Science	30	43	43	46	36	20	37.0	310
Agricultural Science	-	28	44	24	33	16	36.8	115
Accounting	32	34	22	37	55	22	29.5	790
Economics	39	37	26	43	38	44	38.2	661
Typing	47	40	32	57	53	28	55.4	27
Food & Nutrition	-	62	65	68	37	53	34.2	129
Wood Technology	-	41	45	26	44	22	31.8	121



**Number of students sitting national Year 12 Exam
All schools (Government and Non-Government)**

Number of students	2001	2002	2003
Sat National Year 12 Exam ⁴	2,301	2,465	2,547
Enrolled at start of school in year 12 (School Census)	2,569	2,822	2,886

**Percentage⁵ of Year 12 Students that sat the Year 12 Exam
All Students (Government and Non-Government)**

	2001	2002	2003
Percentage of students enrolled at start of school who sat year 12 exam	90%	87%	88%

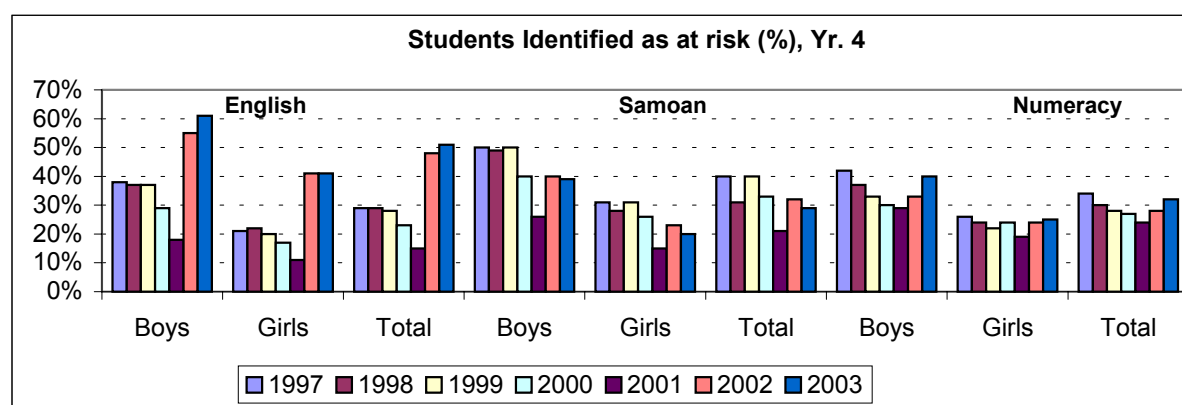
³ Data at this stage is not available disaggregated by location (1.2, 1.4 of the Performance Framework)

⁴ Total number of students who sat any one of the Yr. 12 exams. Note that no subjects are compulsory at Yr. 12, however most students undertake English, Samoan and Mathematics. However, individual schools may have a policy of some subjects being compulsory.

⁵ Percentage of students sitting Yr. 12 exam is a measure of how many students starting Yr. 12 actually complete Yr. 12.

Primary Students Identified as at Risk⁶, Year 4
Results from SPELL One Test.

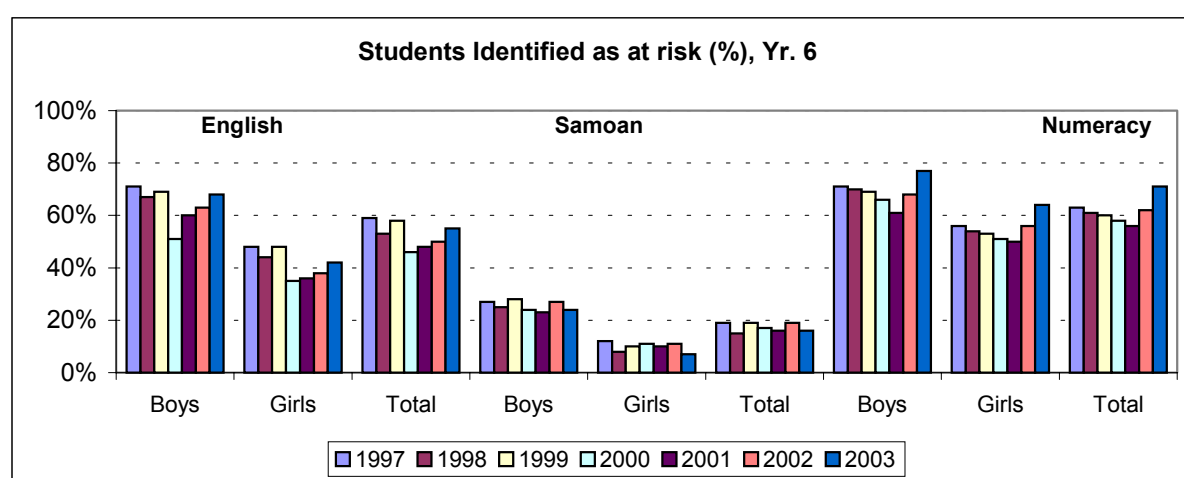
Subject:	Gender	1997	1998	1999	2000	2001	2002	2003
English:	Boys	38%	37%	37%	29%	18%	55%	61%
	Girls	21%	22%	20%	17%	11%	41%	41%
	Total	29%	29%	28%	23%	15%	48%	51%
Samoan:	Boys	50%	49%	50%	40%	26%	40%	39%
	Girls	31%	28%	31%	26%	15%	23%	20%
	Total	40%	31%	40%	33%	21%	32%	29%
Numeracy:	Boys	42%	37%	33%	30%	29%	33%	40%
	Girls	26%	24%	22%	24%	19%	24%	25%
	Total	34%	30%	28%	27%	24%	28%	32%



⁶ The SPELL test is undertaken by all Yr. 4 and Yr. 6 students in Government schools. Most non-Government schools also participate, but it is not compulsory for non-Government schools to participate. It provides an indication of the students whose learning outcomes are identified as being at risk (Graded at Level 4 or Level 5 on the test)

Primary Students identified as at Risk⁷, Year 6
Results from SPELL Two Test

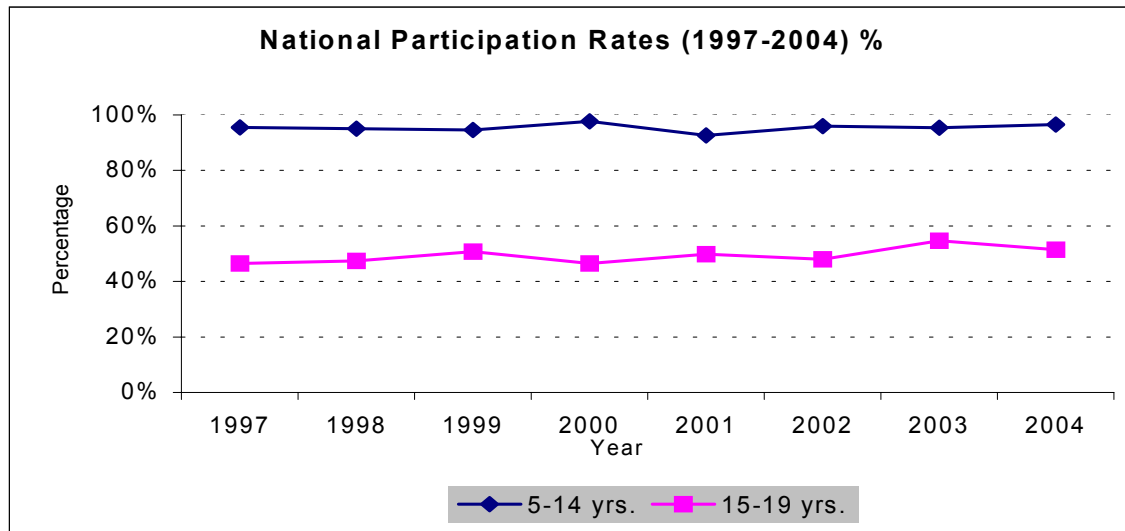
Subject	Gender	1997	1998	1999	2000	2001	2002	2003
English:	Boys	71%	67%	69%	51%	60%	63%	68%
	Girls	48%	44%	48%	35%	36%	38%	42%
	Total	59%	53%	58%	46%	48%	50%	55%
Samoan:	Boys	27%	25%	28%	24%	23%	27%	24%
	Girls	12%	8%	10%	11%	10%	11%	7%
	Total	19%	15%	19%	17%	16%	19%	16%
Numeracy:	Boys	71%	70%	69%	66%	61%	68%	77%
	Girls	56%	54%	53%	51%	50%	56%	64%
	Total	63%	61%	60%	58%	56%	62%	71%



⁷ The SPELL test is undertaken by all Yr. 4 and Yr. 6 students in Government schools. Most non-Government schools also participate, but it is not compulsory for non-Government schools to participate. It provides an indication of the students whose learning outcomes are identified as being at risk. (Graded at Level 4 or Level 5 on the test.)

National Age Participation Rates

Year	1995	1996	1997	1998	1999	2000	2001	2002	2003	2004
5–14 Years	98%	95%	95%	95%	95%	98%	93%	96%	95%	97%
15–19 Years	44%	45%	46%	47%	51%	46%	50%	48%	55%	51%



Source: Ministry of Education, Sports & Culture (Manumea), Ministry of Finance's Statistical Services Division and the Secretariat for the Pacific Community (SPC)⁸

⁸ In calculating the size of the 5–14 and 15–19 year age groups, a projected population increase of 5% was used from 1997-2000 and 2002-2004. The National Population Census was conducted in 2001, the participation rate for this year is considered to be real and not an estimate. Population estimates for 1997-2000 and 2002-2004 were provided by the Statistical Services Division of the Ministry of Finance.

No. of Government Schools that are meeting the national standards for Primary student-teacher ratio of 1 teacher to 30 students (1:30)

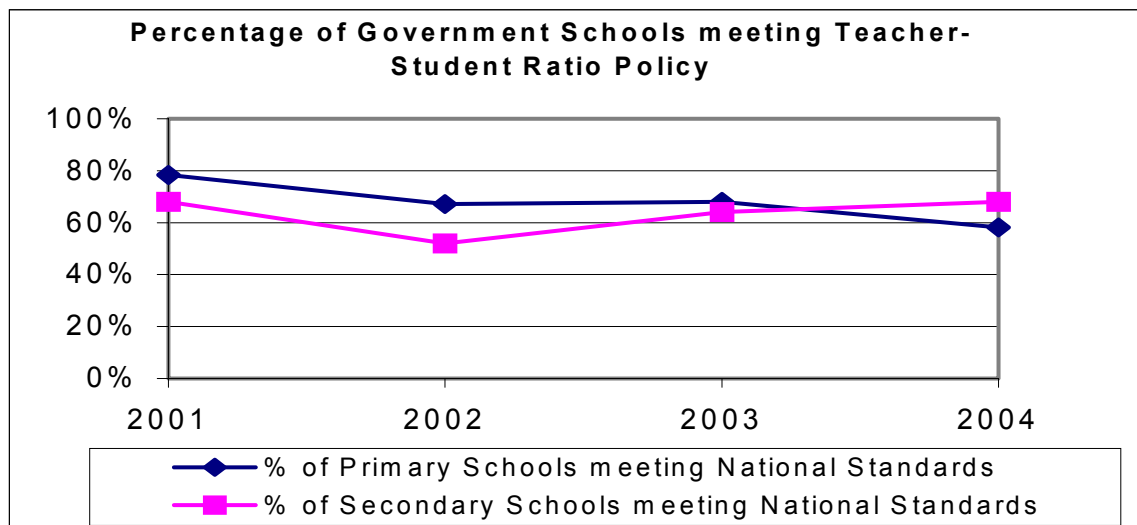
Year	No. of Primary Schools meeting National Standard (1:30)	No. of Primary Schools above National Standard (1:30)	% of Primary Schools meeting National Standards
2001	112	31	78%
2002	96	47	67%
2003	96	45	68%
2004	82	59	58%

N.B. The above table was amended in the 2003 edition due to an error in the calculation.

No. of Government Schools that are meeting the national standards for Secondary student-teacher ratio of 1 teacher to 20 students (1:20)

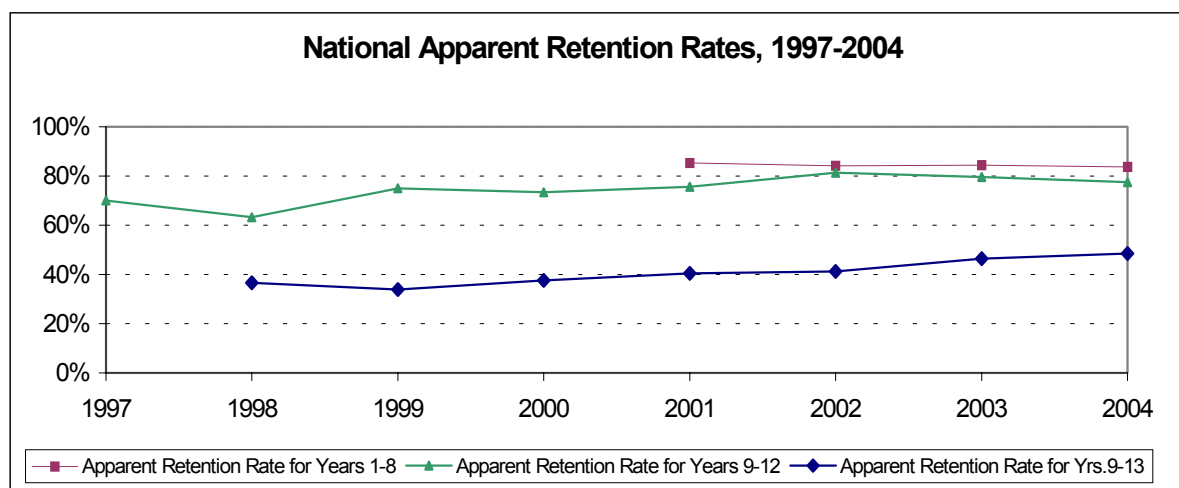
Year	No. of Secondary Schools meeting National Standard (1:20)	No. of Secondary Schools above National Standard Ratio (1:20)	% of Secondary Schools meeting National Standards
2001	17	8	68%
2002	13	12	52%
2003	16	9	64%
2004	17	8	68%

N.B. The above table was amended in the 2003 edition due to an error in the calculation.



Apparent Retention Rate⁹ for All Schools

	1997	1998	1999	2000	2001	2002	2003	2004
Apparent Retention Rate Years 1–8					85%	84%	84%	84%
Apparent Retention Rate for Years 9–12	70%	63%	75%	73%	76%	81%	80%	77%
Apparent Retention Rate for Years 9–13		37%	34%	38%	40%	41%	46%	48%



Students commencing first year of tertiary studies¹⁰

Year	National University of Samoa (NUS) ¹¹	Samoa Polytechnic	University of South Pacific (USP)	Total
2001	349	83	Not available	432
2002	490	97	Not available	587
2003	370	185	Not available	555

Transition Rate¹² from Year 13 to identified tertiary education

Year	Year 13 to Tertiary Education
2001	34%
2002	42%
2003	39%

⁹ Apparent Retention Rate compares the number of students in a given year with the size of the cohort some years ago. For example, the apparent retention rate of Years 9–12 for 2003 is calculated as the number of students in Year 12 in 2003 divided by the number of students in Year 9 in 1999.

¹⁰ Students commencing at USP are not included.

¹¹ Students in UPY are included.

¹² Transitional rate into Post-secondary studies is the number of students who commenced post-secondary education in 2003 (National University of Samoa, Samoa Polytechnic) as a percentage of the students who were in Year 13 in 2002. At this stage students commencing at USP are not included.